

APP CRS	Rwy Idg	3040
029°	TDZE	420
	Apt Elev	422

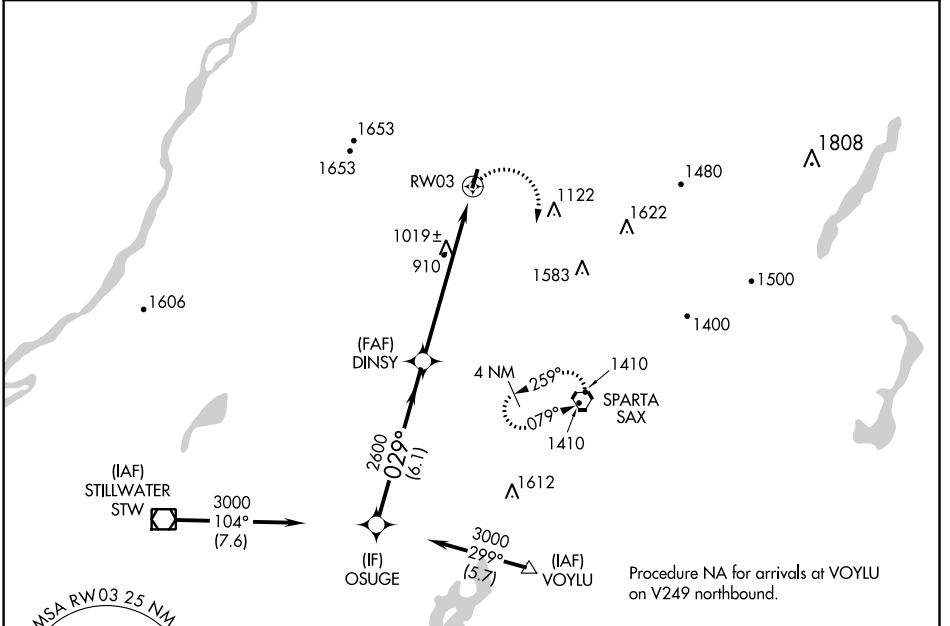
RNAV (GPS) RWY 3

SUSSEX (F'WN)

⚠ DME/DME RNP-0.3 NA. When local altimeter setting not received, use Teterboro altimeter setting and increase all MDA 140 feet; increase LNAV Cats A/B and Circling Cat B visibility ¼ mile and increase LNAV and Circling Cat C visibility ½ mile. Procedure NA at night. Helicopter visibility reduction below 1 SM NA.

MISSED APPROACH: Climbing right turn to 3000 direct SAX VORTAC and hold.

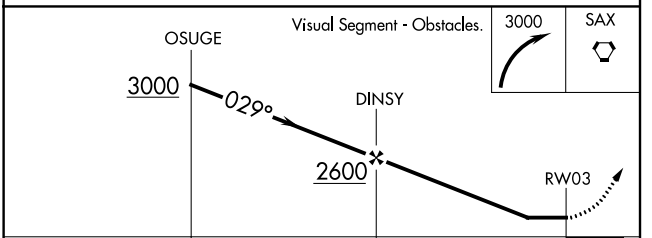
ASOS 118.525	NEW YORK APP CON 127.6 379.9	UNICOM 122.7 (CTAF) ①
------------------------	--	---------------------------------



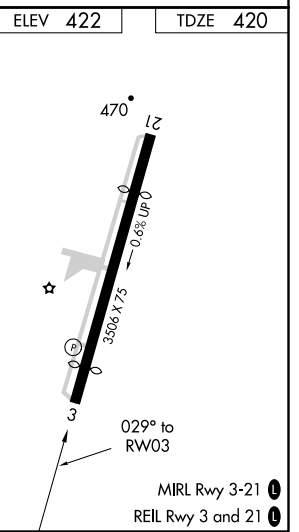
NE-2, 10 SEP 2020 to 08 OCT 2020

NE-2, 10 SEP 2020 to 08 OCT 2020

ELEV 422	TDZE 420
----------	----------



CATEGORY	A	B	C	D
LNAV MDA	1300-1 880 (900-1)	1300-1¼ 880 (900-1¼)	1300-2½ 880 (900-2½)	NA
C CIRCLING	1300-1¼	878 (900-1¼)	1300-2½ 878 (900-2½)	NA



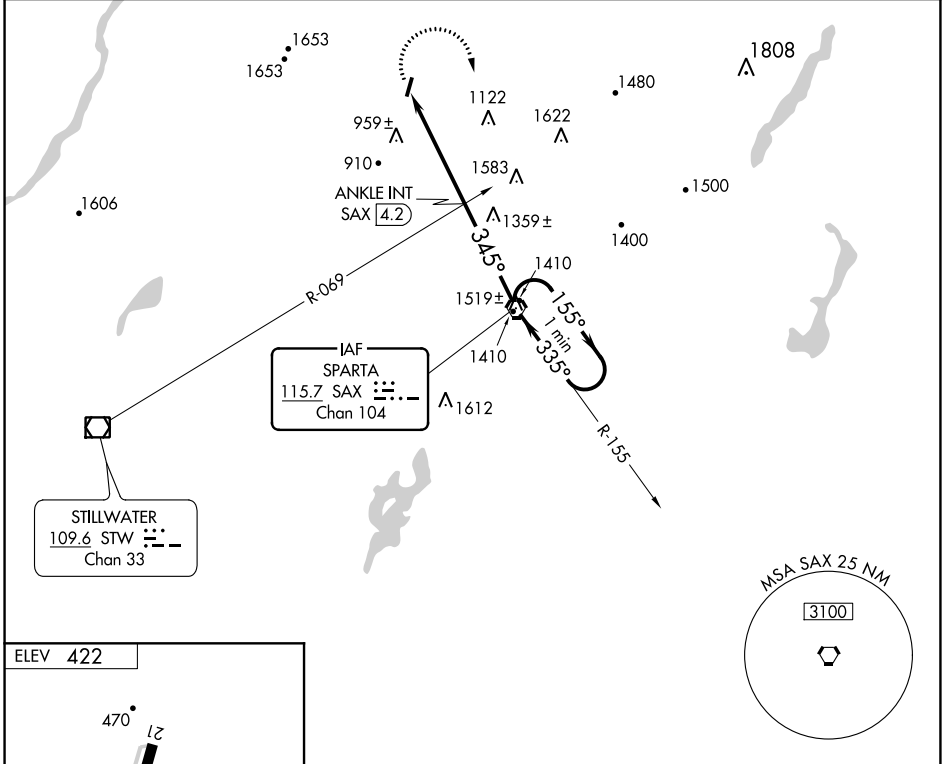
VORTAC SAX 115.7 Chan 104	APP CRS 345°	Rwy Idg TDZE Apt Elev	N/A N/A 422
---	------------------------	-----------------------------	--

VOR-A
SUSSEX (F'WN)

⚠ When local altimeter setting not received, use Teterboro altimeter setting and increase all MDA 140 feet and ANKLE FIX Minimums Cats A & B visibility ¼ mile and Cat C ½ mile. Procedure NA at night. Helicopter visibility reduction below 1 SM NA.

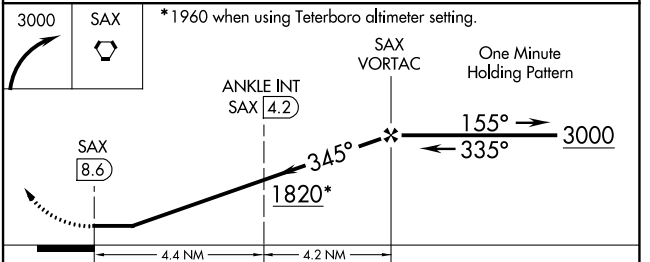
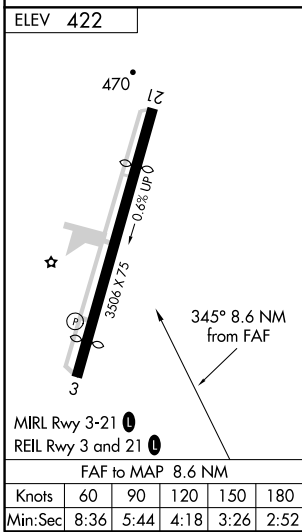
MISSED APPROACH: Climbing right turn to 3000 direct SAX VORTAC and hold.

ASOS 118.525	NEW YORK APP CON 127.6 379.9	UNICOM 122.7 (CTAF)
------------------------	--	-------------------------------



NE-2, 10 SEP 2020 to 08 OCT 2020

NE-2, 10 SEP 2020 to 08 OCT 2020



CATEGORY	A	B	C	D
C CIRCLING	1820-1¼ 1398 (1400-1¼)	1820-1½ 1398 (1400-1½)	1820-3 1398 (1400-3)	NA
ANKLE FIX MINIMUMS (DUAL VOR RECEIVERS OR DME REQUIRED)				
C CIRCLING	1300-1 878 (900-1)	1300-1¼ 878 (900-1¼)	1300-2½ 878 (900-2½)	NA