

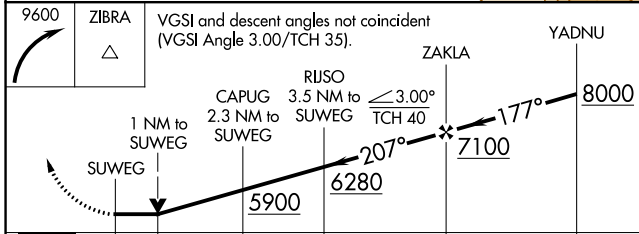
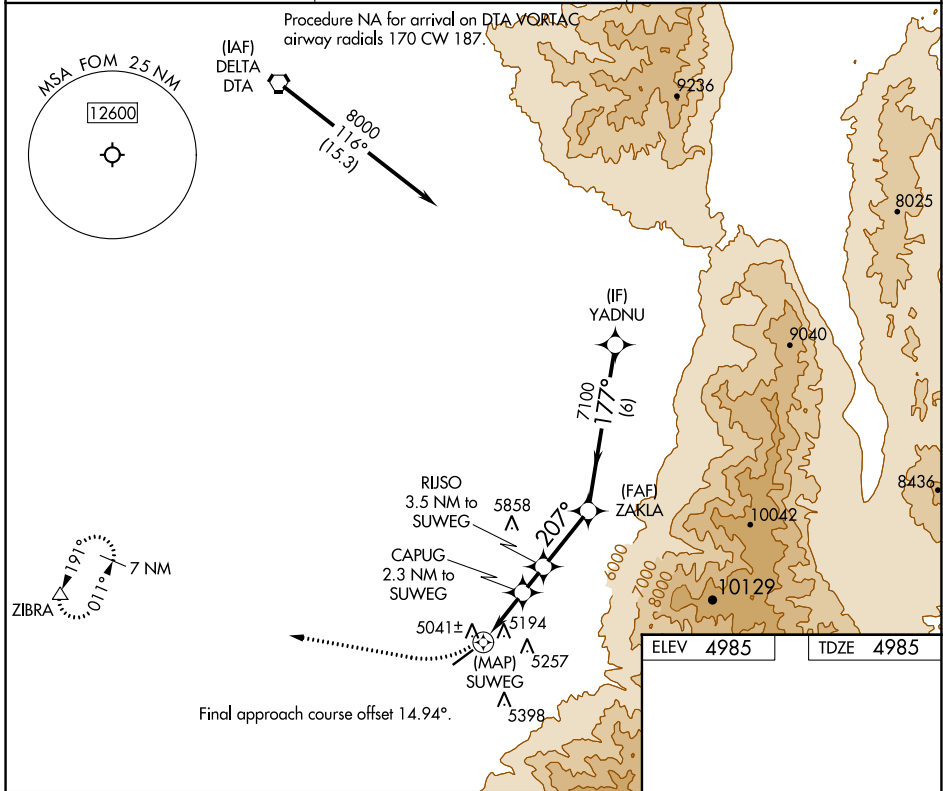
APP CRS	Rwy Idg	5040
207°	TDZE	4985
	Apt Elev	4985

RNAV (GPS) RWY 22

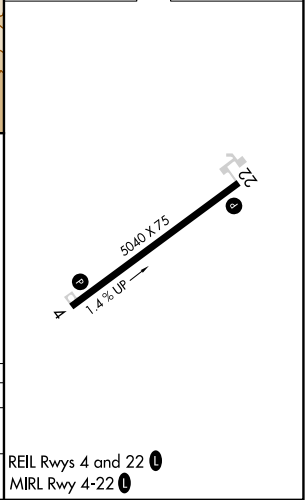
FILLMORE MUNI (FOM)

RNP APCH.	MISSED APPROACH: Climbing right turn to 9600 direct ZIBRA and hold, continue climb-in-hold to 9600.
	Rwy 22 helicopter visibility reduction below 3/4 SM NA.

AWOS-3 133.775	SALT LAKE CITY CENTER 125.575 379.275	UNICOM 122.8 (CTAF) 0
--------------------------	---	---------------------------------



ELEV 4985	TDZE 4985
-----------	-----------



	0.5	1	1.3 NM	1.2 NM	2.6 NM	6 NM
CATEGORY	A		B		C	D
LNVA MDA	5500-1 515 (600-1)		5500-1 515 (600-1 3/8)		NA	NA
CIRCLING	5620-1 635 (700-1)		6200-3 1215 (1300-3)		NA	NA

SW-4, 22 FEB 2024 to 21 MAR 2024

SW-4, 22 FEB 2024 to 21 MAR 2024

WAAS CH 42917 W04A	APP CRS 041°	Rwy Idg TDZE Apt Elev	5040 4957 4985
--	------------------------	-----------------------------	---

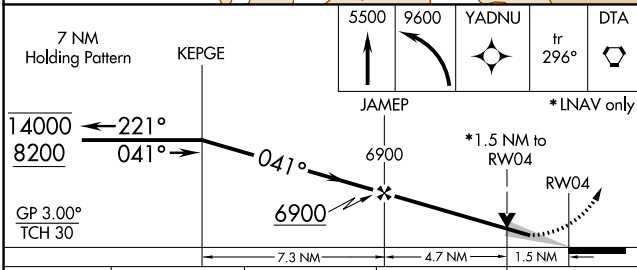
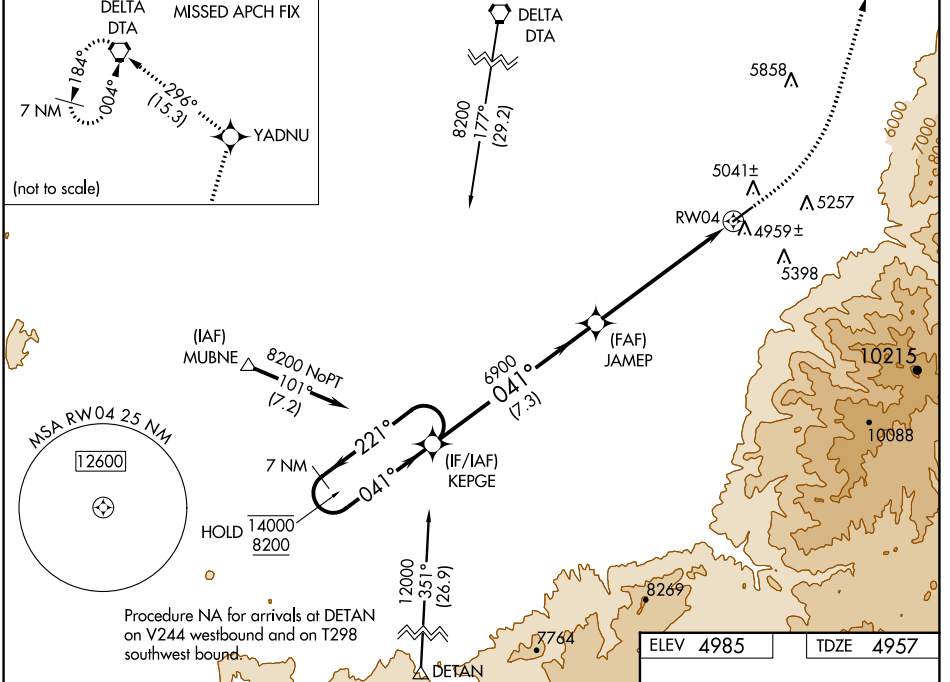
RNAV (GPS) RWY 4

FILLMORE MUNI (FOM)

RNP APCH. MISSED APPROACH: Climb to 5500 then climbing left turn to 9600 direct YADNU and on track 296° to DTA VORTAC and hold.

▼ For uncompensated Baro-VNAV systems, procedure NA below
 ▲ -24°C or above 54°C.

AWOS-3 133.775	SALT LAKE CITY CENTER 125.575 379.275	UNICOM 122.8 (CTAF) 0
--------------------------	---	---------------------------------



CATEGORY	A	B	C	D
LPV DA	5214-1 257 (300-1)			NA
LNAV/VNAV DA	5315-1 358 (400-1)			NA
LNAV MDA	5420-1	463 (500-1)	5420-1½ 463 (500-1½)	NA
CIRCLING	5620-1	635 (700-1)	6200-3 1215 (1300-3)	NA

ELEV 4985	TDZE 4957
-----------	-----------

REIL Rwy 4 and 22 0
MIRL Rwy 4-22 0

SW-4, 22 FEB 2024 to 21 MAR 2024

SW-4, 22 FEB 2024 to 21 MAR 2024