

WAAS CH 82403 W14A	APP CRS 138°	Rwy Idg TDZE Apt Elev	4650 1204 1204
--	------------------------	-----------------------------	---

RNAV (GPS) RWY 14

FREMONT MUNI (F'ET)

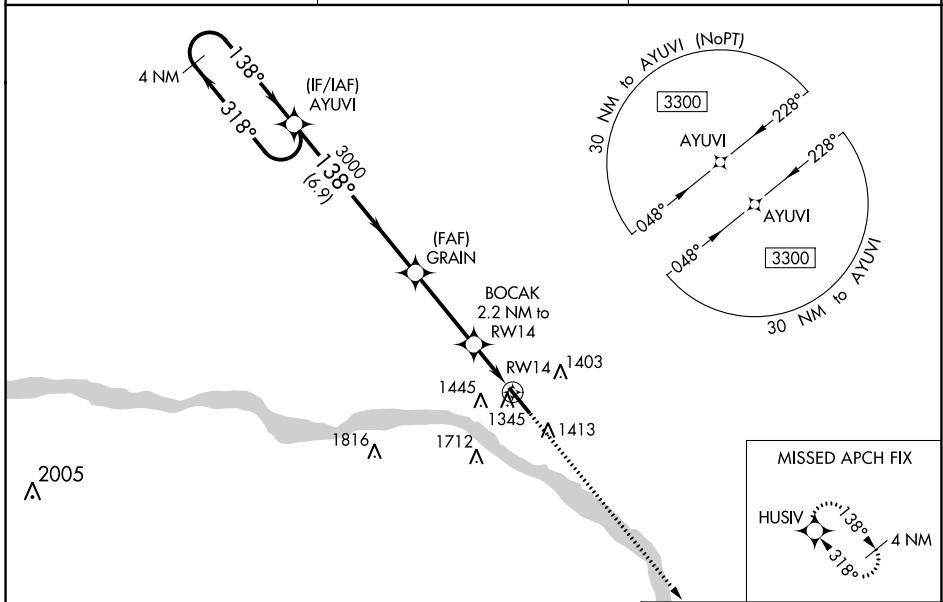
⚠ For uncompensated Baro-VNAV systems, LNAV/VNAV NA below -17°C (2°F) or above 54°C (130°F). DME/DME RNP-0.3 NA. Helicopter visibility reduction below 1 SM NA. When local altimeter setting not received, use Blair altimeter setting and increase all DA/MDA 60 feet; increase LNAV/VNAV all Cats visibility 1/8 mile, and LNAV Cat C visibility 1/4 mile. Baro-VNAV and VDP NA when using Blair altimeter setting.

MISSED APPROACH:
Climb to 3800 direct HUSIV and hold.

AWOS-3
121.275

OMAHA APP CON
120.1 354.05

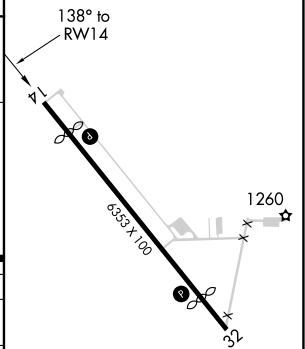
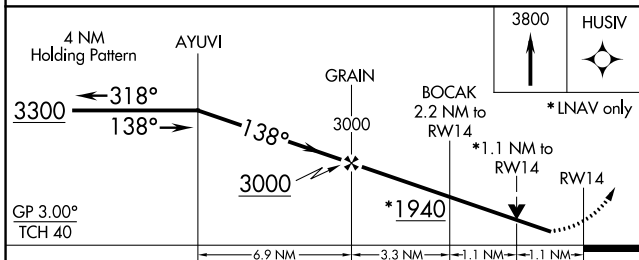
UNICOM
122.8 (CTAF) 0



NC-2, 22 FEB 2024 to 21 MAR 2024

NC-2, 22 FEB 2024 to 21 MAR 2024

ELEV 1204 **D** TDZE 1204



CATEGORY	A	B	C	D
LPV DA	1454-1	250 (300-1)		NA
LNAV/VNAV DA	1496-1	292 (300-1)		NA
LNAV MDA	1600-1	396 (400-1)	1600-1 1/8 396 (400-1 1/8)	NA
C CIRCLING	1760-1	556 (600-1)	2020-2 1/2 816 (900-2 1/2)	NA

REIL Rwy 14 **0**
MIRL Rwy 14-32

FREMONT, NEBRASKA

AL-5759 (FAA)

21280

WAAS CH 77635 W32A	APP CRS 318°	Rwy Idg 4650 TDZE 1204 Apt Elev 1204
--	------------------------	---

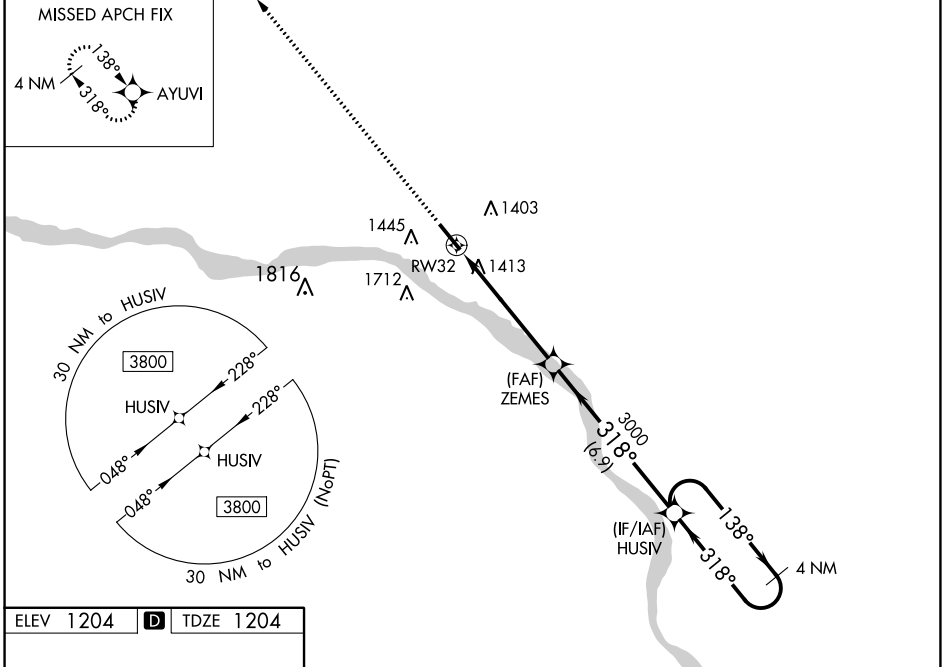
RNAV (GPS) RWY 32

FREMONT MUNI (F'E/T)

▼ For uncompensated Baro-VNAV systems, LNAV/VNAV NA below -17°C (2°F) or above 54°C (130°F).
 ▲ DME/DME RNP-0.3 NA. Helicopter visibility reduction below 1 SM NA. When local altimeter setting not received, use Blair altimeter setting and increase all DA/MDA 60 feet; increase LNAV Cat C visibility ½ mile, and LNAV/VNAV visibility ¼ mile all Cats. Baro-VNAV and VDP NA when using Blair altimeter setting.

MISSED APPROACH: Climb to 3300 direct AYUVI and hold.

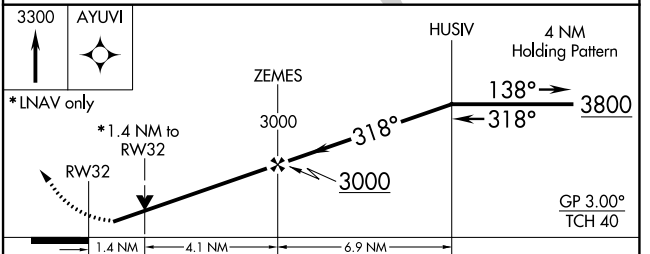
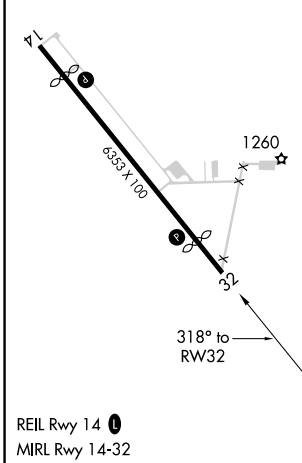
AWOS-3 121.275	OMAHA APP CON 120.1 354.05	UNICOM 122.8 (CTAF) ①
--------------------------	--------------------------------------	---------------------------------



NC-2, 22 FEB 2024 to 21 MAR 2024

NC-2, 22 FEB 2024 to 21 MAR 2024

ELEV 1204	D	TDZE 1204
------------------	----------	------------------



CATEGORY	A	B	C	D
LPV DA	1456-1 252 (300-1)			NA
LNAV/VNAV DA	1712-1¾ 508 (600-1¾)			NA
LNAV MDA	1680-1	476 (500-1)	1680-1⅜ 476 (500-1⅜)	NA
C CIRCLING	1760-1	556 (600-1)	2020-2½ 816 (900-2½)	NA

FREMONT, NEBRASKA
Orig-B 29MAR18

41°27'N-96°31'W

RNAV (GPS) RWY 32

FREMONT MUNI (F'E/T)

VOR/DME SCB	APP CRS	Rwy Idg	4650
111.0	147°	TDZE	1204
Chan 47		Apt Elev	1204

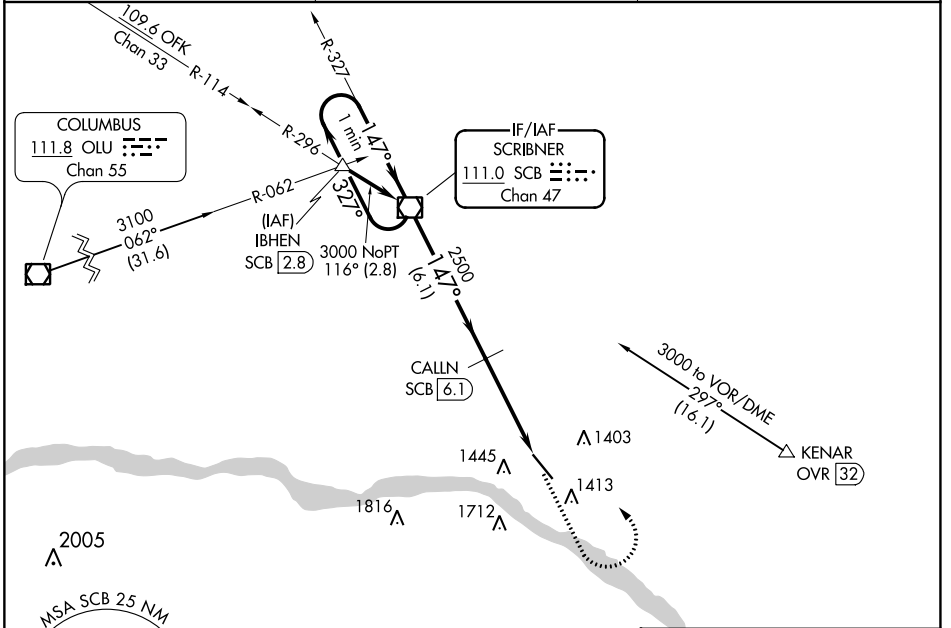
VOR RWY 14

FREMONT MUNI (F'E'T)

V VDP NA with Blair altimeter setting. Rwy 14 helicopter visibility reduction below 1 SM NA. When local altimeter setting not received, use Blair altimeter setting and increase all MDA 60 feet; increase S-14 Cat C visibility 1/8 mile. DME required.

NA MISSED APPROACH: Climb to 3000 then left turn direct SCB VOR/DME and hold.

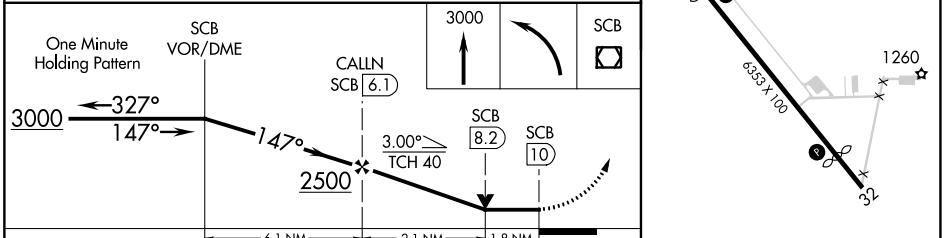
AWOS-3 121.275	OMAHA APP CON 120.1 354.05	UNICOM 122.8 (CTAF) 0
--------------------------	--------------------------------------	---------------------------------



NC-2, 22 FEB 2024 to 21 MAR 2024

NC-2, 22 FEB 2024 to 21 MAR 2024

ELEV 1204	D TDZE 1204
-----------	--------------------



CATEGORY	A	B	C	D
S-14	1820-1	616 (700-1)	1820-1 3/4 616 (700-1 3/4)	NA
C CIRCLING	1820-1	616 (700-1)	2020-2 1/2 816 (900-2 1/2)	NA

REIL Rwy 14 **0**
MRL Rwy 14-32