

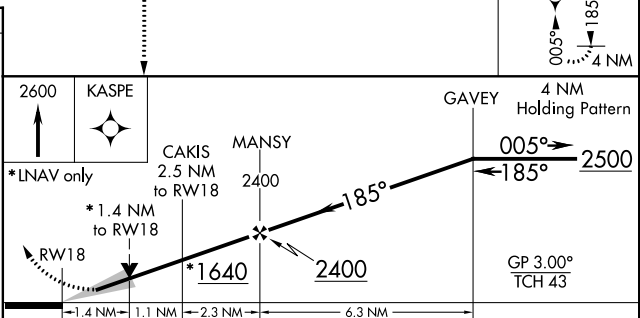
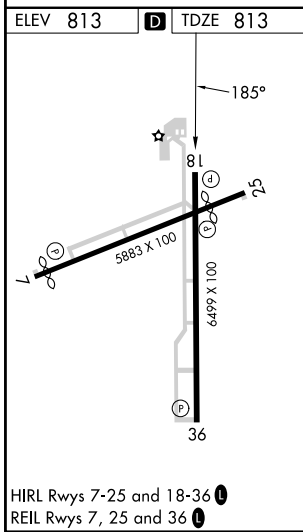
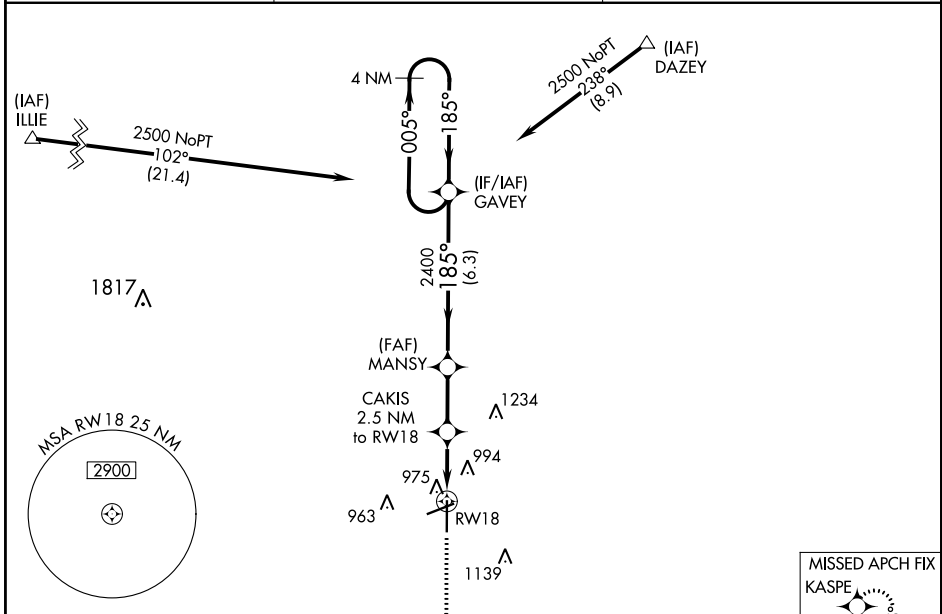
WAAS CH 70405 W18A	APP CRS 185°	Rwy Idg TDZE Apt Elev	6499 813 813
--	------------------------	-----------------------------	---

RNAV (GPS) RWY 18

FINDLAY (F'DY)

RNP APCH-GPS.	<p>⚠ For uncompensated Baro-VNAV systems, LNAV/VNAV NA below -16°C or above 47°C. Baro-VNAV and VDP NA when using Lima Allen County altimeter setting. When local altimeter setting not received, use Lima Allen County altimeter setting; increase all DAs/MDAs 80 feet; increase LNAV Cat C/D and Circling Cat C/D visibility ¼ SM. Circling Rwy 7 NA at night.</p>	MISSED APPROACH: Climb to 2600 direct KASPE and hold.
---------------	--	--

ASOS 132.85	TOLEDO APP CON 120.8 317.55	UNICOM 122.725 (CTAF) 0
-----------------------	---------------------------------------	-----------------------------------



CATEGORY	A	B	C	D
LPV DA	1063-1 250 (300-1)			
LNAV/VNAV DA	1320-1¾ 507 (600-1¾)			
LNAV MDA	1300-1	487 (500-1)	1300-1⅜ 487 (500-1⅜)	1300-1½ 487 (500-1½)
CIRCLING	1440-1	627 (700-1)	1440-1¾ 627 (700-1¾)	1540-2¼ 727 (800-2¼)

EC-2, 22 FEB 2024 to 21 MAR 2024

EC-2, 22 FEB 2024 to 21 MAR 2024

WAAS CH 56405 W25A	APP CRS 254°	Rwy Idg TDZE 812 Apt Elev 813
--	------------------------	---

RNAV (GPS) RWY 25

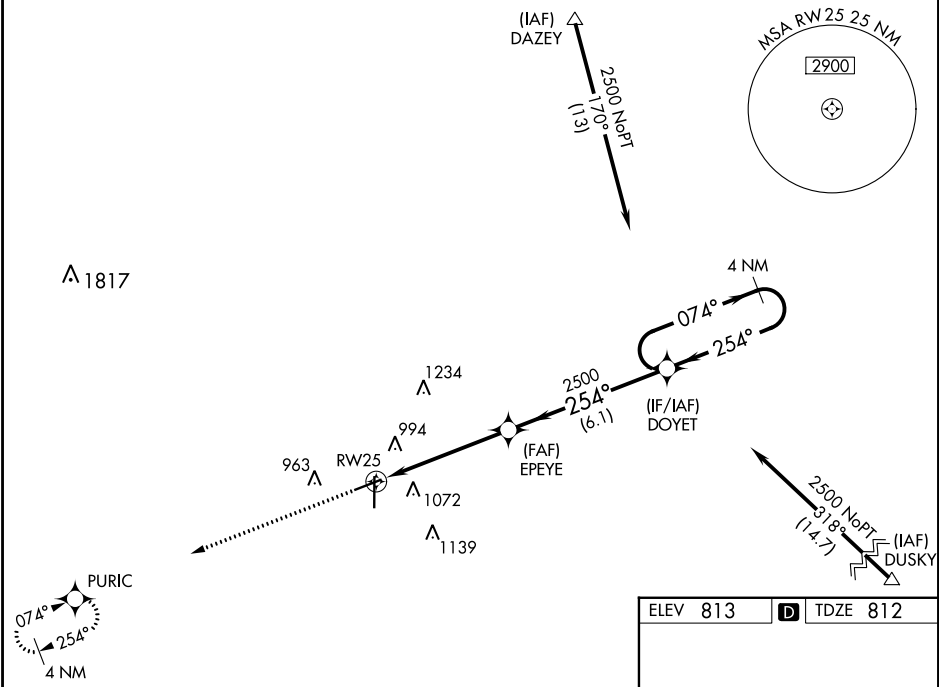
FINDLAY (F'DY)

RNP APCH-GPS.

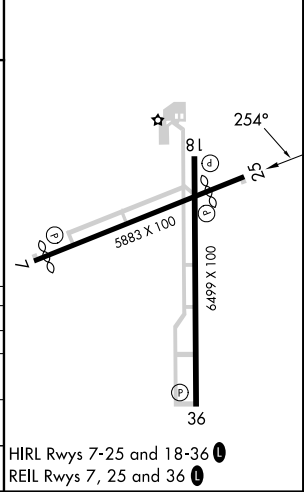
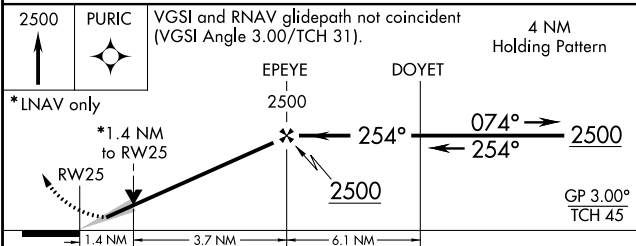
⚠ For uncompensated Baro-VNAV systems, LNAV/VNAV NA below -16°C or above 47°C. Baro-VNAV and VDP NA when using Lima Allen County altimeter setting. When local altimeter setting not received, use Lima Allen County altimeter setting: increase all DAs/MDAs 80 feet; increase LPV visibility 1/8 SM all Cats; increase LNAV Cat C/D and Circling Cat C/D visibility 1/4 SM. Circling Rwy 7 NA at night.

MISSED APPROACH: Climb to 2500 direct PURIC and hold.

ASOS 132.85	TOLEDO APP CON 120.8 317.55	UNICOM 122.725 (CTAF) 0
-----------------------	---------------------------------------	-----------------------------------



ELEV 813	D TDZE 812
----------	-------------------



CATEGORY	A	B	C	D
LPV DA		1116-1	304 (400-1)	
LNAV/VNAV DA		1411-2	599 (600-2)	
LNAV MDA	1280-1	468 (500-1)	1280-1 1/8 468 (500-1 1/8)	1280-1 1/2 468 (500-1 1/2)
CIRCLING	1440-1	627 (700-1)	1440-1 3/4 627 (700-1 3/4)	1540-2 1/4 727 (800-2 1/4)

HIRL Rws 7-25 and 18-36 0
REIL Rws 7, 25 and 36 0

EC-2, 22 FEB 2024 to 21 MAR 2024

EC-2, 22 FEB 2024 to 21 MAR 2024

WAAS CH 72705 W36A	APP CRS 005°	Rwy Idg TDZE Apt Elev	6499 809 813
--	------------------------	-----------------------------	---

RNAV (GPS) RWY 36

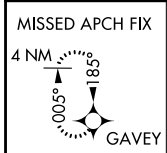
FINDLAY (F'DY)

RNP APCH-GPS.

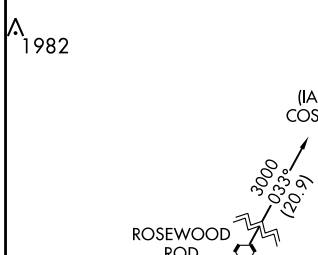
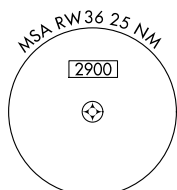
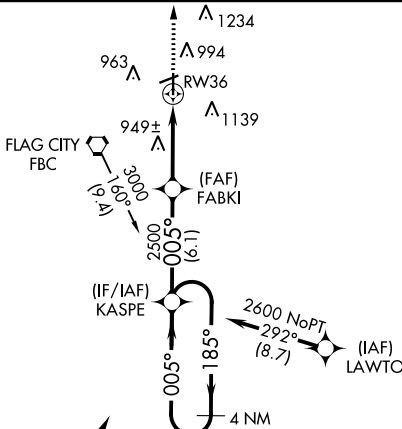
▼ For uncompensated Baro-VNAV systems, LNAV/VNAV NA below -16°C or above 47°C.
▲ Baro-VNAV and VDP NA when using Lima Allen County altimeter setting.
 When local altimeter setting not received, use Lima Allen County altimeter setting; increase all DAs/MDAs 80 feet; increase LNAV Cat C/D visibility 1/8 SM and Circling Cat C/D visibility 1/4 SM.
 Circling Rwy 7 NA at night.

MISSED APPROACH:
Climb to 2500 direct
GAVEY and hold.

ASOS 132.85	TOLEDO APP CON 120.8 317.55	UNICOM 122.725 (CTAF)
-----------------------	---------------------------------------	---------------------------------

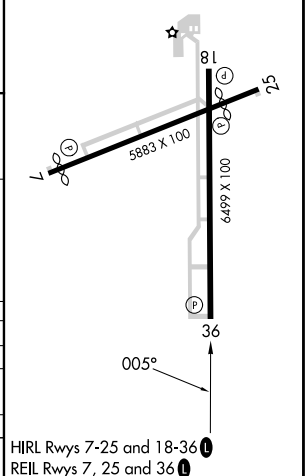
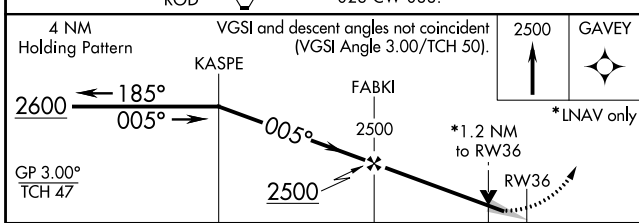


Procedure NA for arrival on
FBC VORTAC airway radials
148 CW 200.



Procedure NA for arrival on
ROD VORTAC airway radials
023 CW 088.

ELEV 813	TDZE 809
----------	----------



CATEGORY	A	B	C	D
LPV DA	1106-1 297 (300-1)			
LNAV/VNAV DA	1229-1½ 420 (500-1½)			
LNAV MDA	1220-1 411 (500-1)	1220-1¼ 411 (500-1¼)		
CIRCLING	1440-1 627 (700-1)	1440-1¾ 627 (700-1¾)	1540-2¼ 727 (800-2¼)	

HIRL Rwy 7-25 and 18-36
REIL Rwy 7, 25 and 36

EC-2, 22 FEB 2024 to 21 MAR 2024

EC-2, 22 FEB 2024 to 21 MAR 2024

APP CRS	Rwy Idg	4558
074°	TDZE	810
	Apt Elev	813

RNAV (GPS) RWY 7

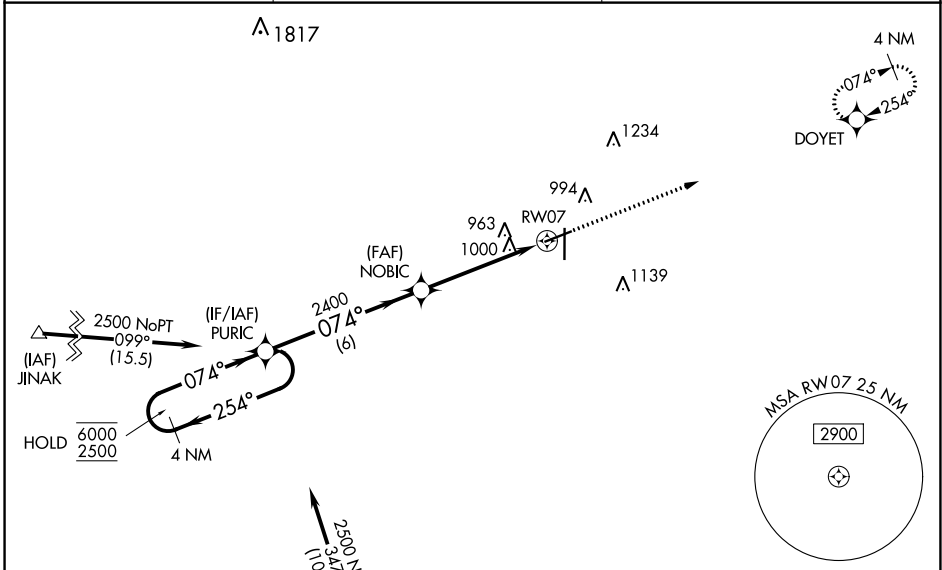
FINDLAY (F'DY)

RNP APCH - GPS.

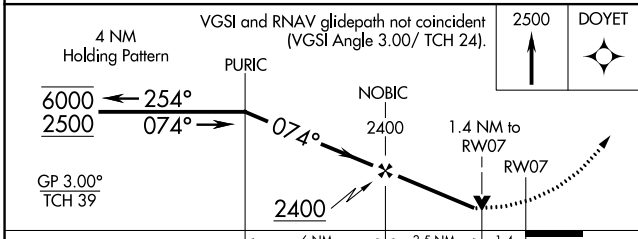
⚠ Baro-VNAV and VDP NA when using Lima Allen County altimeter setting. Rwy 7 helicopter visibility reduction below $\frac{3}{4}$ SM NA. For uncompensated Baro-VNAV systems, LNAV/VNAV NA below -16°C or above 54°C . When local altimeter setting not received, use Lima altimeter setting and increase LNAV/VNAV DA to 1391 feet and all visibilities $\frac{3}{8}$ SM. Increase all MDAs 80 feet and LNAV visibility Cat C/D $\frac{1}{8}$ SM, and Circling visibility Cat C/D $\frac{1}{4}$ SM. Straight-In Rwy 7 NA at night, Circling Rwy 7 NA at night.

MISSED APPROACH: Climb to 2500 direct DOYET and hold.

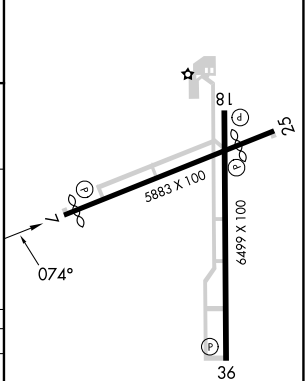
ASOS 132.85	TOLEDO APP CON 120.8 317.55	UNICOM 122.725 (CTAF) 0
-----------------------	---------------------------------------	-----------------------------------



Procedure NA for arrivals at KINDE on V47 southbound.



ELEV 813	D TDZE 810
----------	-------------------



CATEGORY	A	B	C	D
LNAV/VNAV DA	1311-1 $\frac{3}{4}$		501 (500-1 $\frac{3}{4}$)	
LNAV MDA	1260-1	450 (500-1)	1260-1 $\frac{3}{8}$	450 (500-1 $\frac{3}{8}$)
C CIRCLING	1440-1	627 (700-1)	1440-1 $\frac{3}{4}$ 627 (700-1 $\frac{3}{4}$)	1540-2 $\frac{1}{4}$ 727 (800-2 $\frac{1}{4}$)

HIRL Rwy 7-25 and 18-36 **0**
REIL Rwy 7, 25 and 36 **0**

EC-2, 22 FEB 2024 to 21 MAR 2024

EC-2, 22 FEB 2024 to 21 MAR 2024

VORTAC FBC 108.2 Chan 19	APP CRS 048°	Rwy Idg 4558 TDZE 810 Apt Elev 813
--	------------------------	---

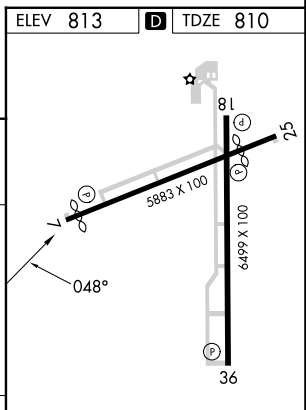
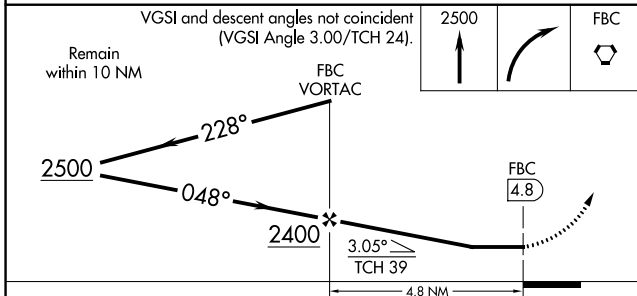
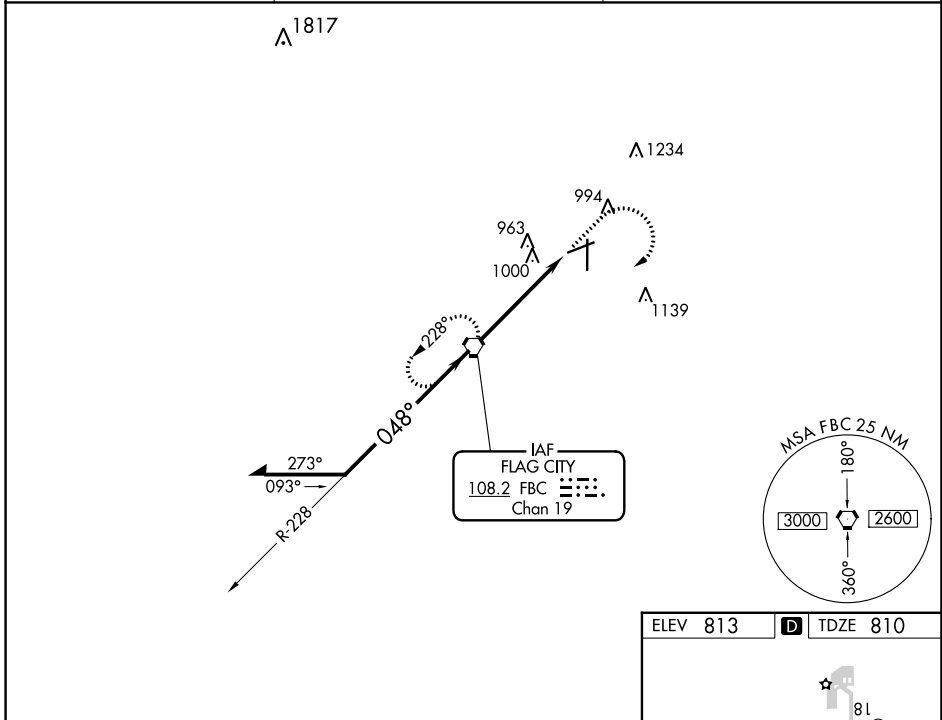
VOR RWY 7

FINDLAY (FDY)

⚠ Rwy 7 helicopter visibility reduction below 1 SM NA. When local altimeter setting not received, use Lima Allen County altimeter setting and increase all MDA 80 feet, and increase S-07 visibility Cat C/D 1/8 SM, and Circling visibility Cat C/D 1/4 SM. Straight-In Rwy 7 NA at night, Circling Rwy 7 NA at night.

⚠ MISSED APPROACH: Climb to 2500 then right turn direct FBC VORTAC and hold.

ASOS 132.85	TOLEDO APP CON 120.8 317.55	UNICOM 122.725 (CTAF) 0
-----------------------	---------------------------------------	-----------------------------------



CATEGORY	A	B	C	D	HIRL Rwys 7-25 and 18-36 0 REIL Rwys 7, 25 and 36 0 FAF to MAP 4.8 NM	
S-7	1260-1 450 (500-1)	1260-1 1/4 450 (500-1 1/4)	1260-1 1/2 450 (500-1 1/2)	1260-1 3/4 450 (500-1 3/4)		
C CIRCLING	1440-1 627 (700-1)	1440-1 3/4 627 (700-1 3/4)	1540-2 1/4 727 (800-2 1/4)	1540-2 1/2 727 (800-2 1/2)		
	Knots	60	90	120	150	180
	Min:Sec	4:48	3:12	2:24	1:55	1:36