

WIPOR THREE ARRIVAL (RNAV)
(WIPOR.WIPOR3) 13NOV14

NEW BEDFORD RGNL
ATIS 126.85
THEODORE FRANCIS GREEN STATE
D-ATIS 124.2
PROVIDENCE APP CON ★
123.675 244.875

ALBANY TRANSITION (ALB.WIPOR3):
HANCOCK TRANSITION (HNK.WIPOR3):
HINGZ TRANSITION (HINGZ.WIPOR3):

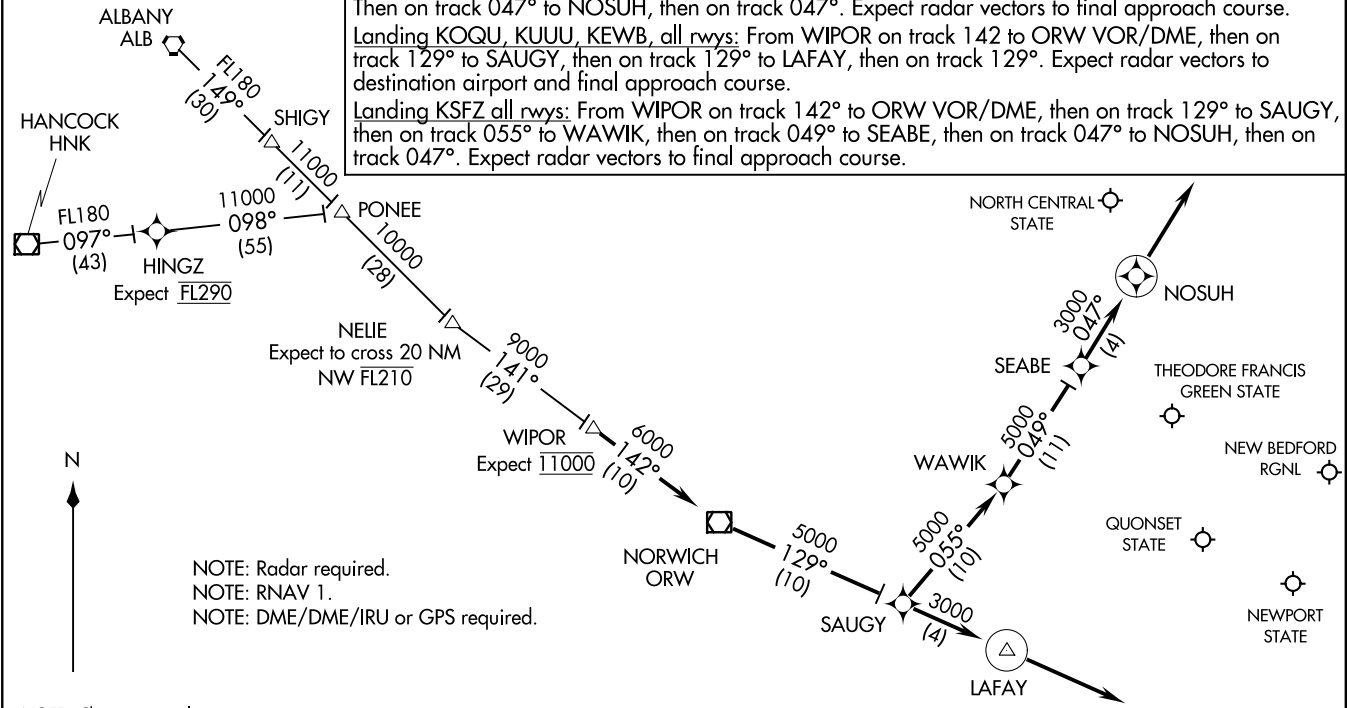
ARRIVAL ROUTE DESCRIPTION

From WIPOR on track 142° to ORW VOR/DME, then on track 129° to SAUGY.
Landing KPYD Rwy 5, 34: From SAUGY on track 129° to LAFAY, then on track 129°. Expect radar vectors to final approach course.
Landing KPYD Rwy 16, 23: From SAUGY on track 055° to WAWIK, then on track 049° to SEABE. Then on track 047° to NOSUH, then on track 047°. Expect radar vectors to final approach course.
Landing KOQU, KUUU, KEWB, all rwy's: From WIPOR on track 142 to ORW VOR/DME, then on track 129° to SAUGY, then on track 129° to LAFAY, then on track 129°. Expect radar vectors to destination airport and final approach course.
Landing KSFZ all rwy's: From WIPOR on track 142° to ORW VOR/DME, then on track 129° to SAUGY, then on track 055° to WAWIK, then on track 049° to SEABE, then on track 047° to NOSUH, then on track 047°. Expect radar vectors to final approach course.

(WIPOR.WIPOR3) 17173
WIPOR THREE ARRIVAL (RNAV)

AL-333 (FAA)

PROVIDENCE, RHODE ISLAND



NOTE: Radar required.
NOTE: RNAV 1.
NOTE: DME/DME/IRU or GPS required.

NOTE: Chart not to scale.

PROVIDENCE, RHODE ISLAND