

AI-6373 [USA]

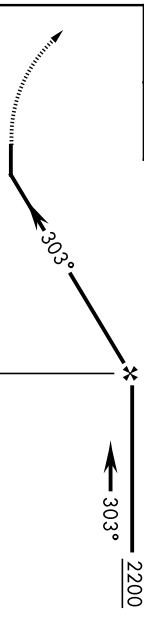
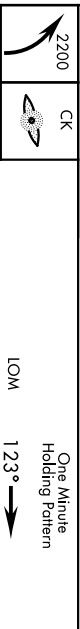
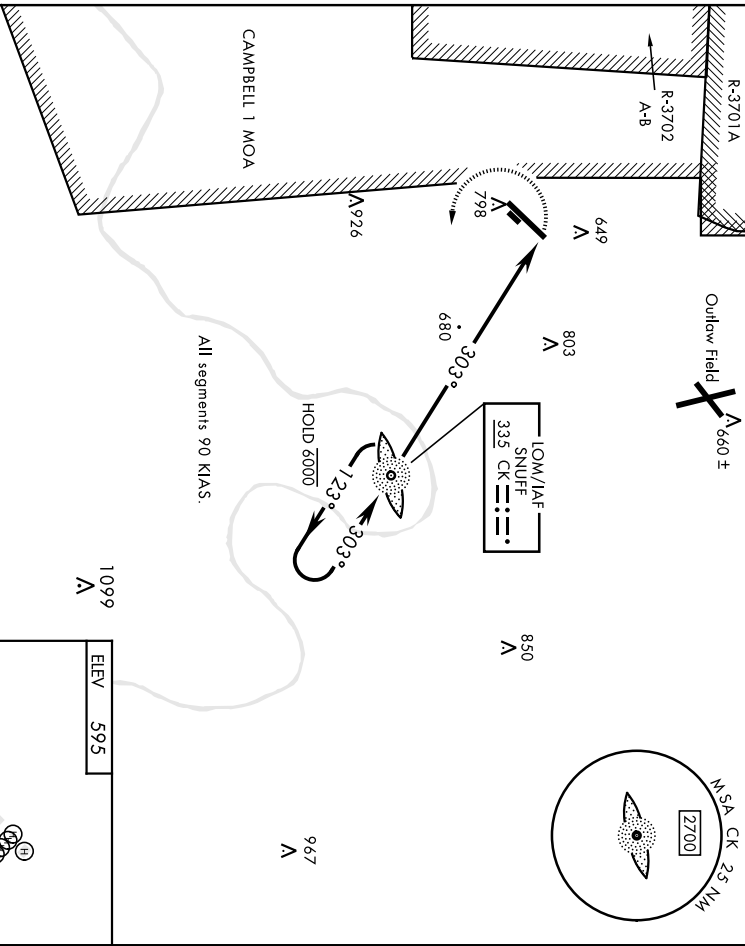
SABRE AAF (FORT CAMPBELL) (KEOD)

LOM CK 335	APCH CRS 303°	Rwy Idg N/A	TDZE Arpl Elev 595
----------------------	-------------------------	----------------	---------------------------------

▼ When local altimeter setting not received, use Fort Campbell, KY altimeter setting.

MISSED APPROACH: Climbing left turn to 2200 direct CK LOM and hold.

ATIS 308.5	CAMPBELL APP CON 134.55 307.025	TOWER * 124.675 (CTAF) 290.45	GND CON 142.975 267.3	CINC DEL 237.6	ENGLE RADIO 285.7	ASR
----------------------	---	---	---------------------------------	--------------------------	-----------------------------	-----



CATEGORY	1080-1/2	COPTER	485	(500-1/2)	36°34'N-87°29'W
H-303°	5.1 NM				
HIRL Rwy 5-23 FAF to MAP 5.1 NM					
Knots	45	60	75	90	105
Min:Sec	6:48	5:06	4:05	3:24	2:55

CLARKSVILLE, TENNESSEE
Amdt 68 20JUN19
SABRE AAF (FORT CAMPBELL) (KEOD)
COPTER NDB 303°

COPTER VOR RWY 23

AI-6373 [USA]

SABRE AAF (FORT CAMPBELL) (KEOD)

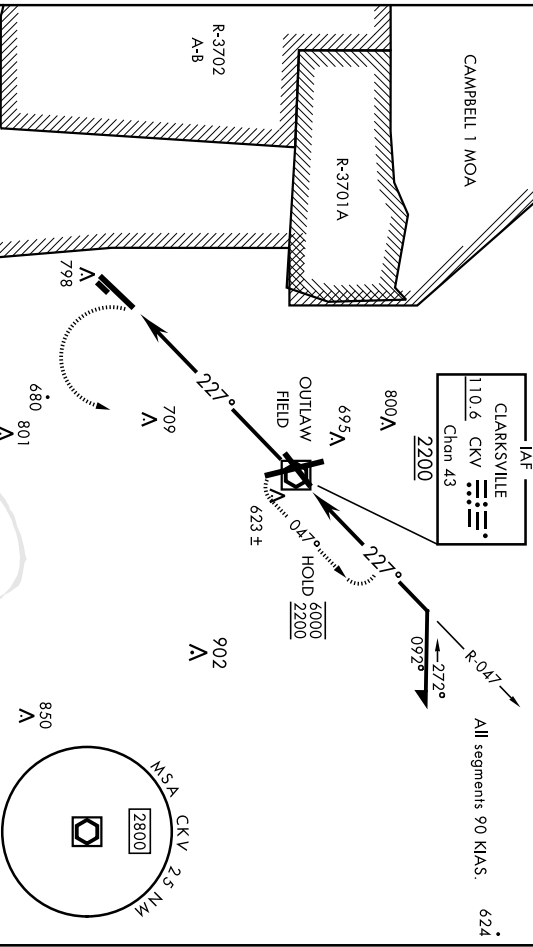
VOR/DME CKV Chan 43	APCH CRS 227°	Req./Idg TDLZ Elev	5000 587 595
------------------------	------------------	-----------------------	--------------------

RADAR required

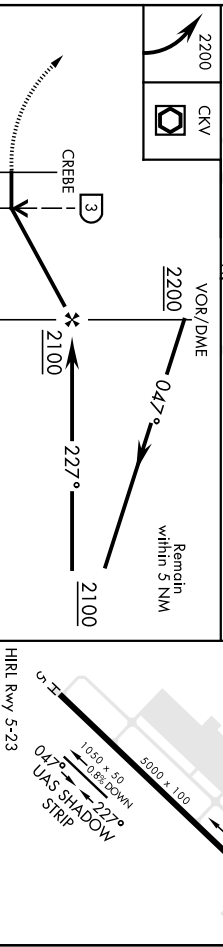
MISSED APPROACH: Climbing left turn to 2200
direct CKV VOR/DME and hold.

ATIS 306.5	CAMPBELL APP CON 134.35 307.025	TOWER ★ 124.675 (CTAF) 290.45	GND CON 142.975 267.3	CINCL DEL 237.6	FAGIE RADIO 285.7	ASR 608
---------------	------------------------------------	----------------------------------	--------------------------	--------------------	----------------------	------------

When local altimeter setting not received,
use Campbell AAF (Fort Campbell), KY altimeter setting.
VDP NA when using CAMPBELL AAF (Fort Campbell), KY altimeter setting.



ELEV	595	TDZE	587
------	-----	------	-----



HRIL Rwy 5-23	FAF to MAP 4.2 NM
---------------	-------------------

Knots	45	60	75	90	105
Min./Sec	5:36	4:12	3:22	2:48	2:24

CATEGORY	1060-1	COPTER	473	(500-1)
----------	--------	--------	-----	---------

CLARKSVILLE, TENNESSEE 36° 34' N - 87° 29' W SABRE AAF (FORT CAMPBELL) (KEOD)

Archt 7 07SEP23

COPTER VOR RWY 23

CLARKSVILLE, TENNESSEE

RNAV (GPS) X RWY 23

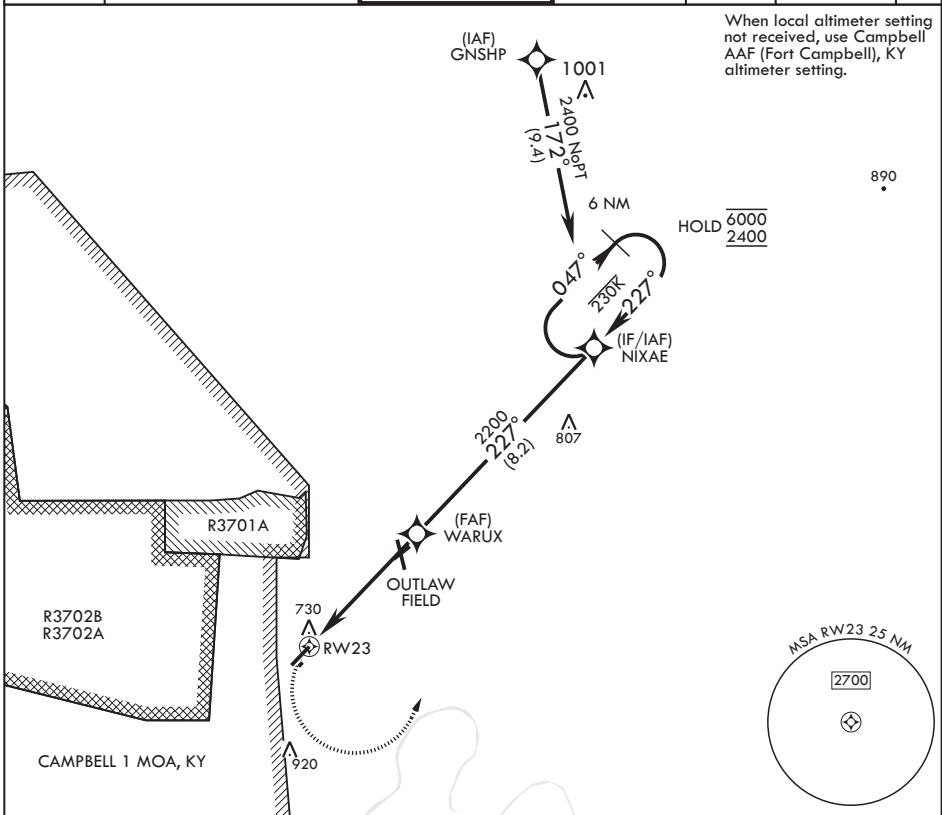
APCH CRS	Rwy Idg	5000
227°	TDZE	587
	Arprt Elev	595

AL-6373 (USA)

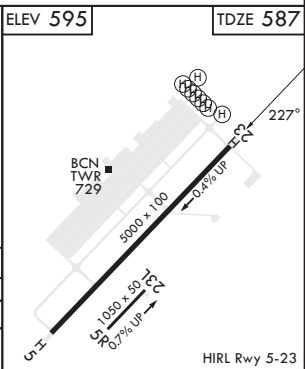
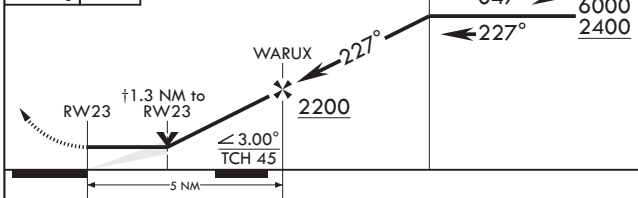
SABRE AAF (FORT CAMPBELL) (KEOD)

RNP APCH-GPS	MISSED APPROACH: Climbing left turn to 2400 direct NIXAE and hold.
RADAR required	
* Circling not authorized to Rwy 5R/23L.	

SABRE ATIS	CAMPBELL APP CON/DEP CON	TOWER *	GND CON	CLNC DEL	EAGLE RADIO	ASR
306.5	134.35 307.025	124.675 (CTAF) 290.45	142.975 267.3	237.6	285.7	



2400	NIXAE	† VDP NA when using Campbell AAF (Fort Campbell) altimeter setting.	6 NM Holding Pattern	ELEV 595	TDZE 587
------	-------	---	----------------------	----------	----------



CATEGORY	A	B	C	D
LNAV MDA	1060-1 473 (500-1)		1060-1 ³ / ₈ 473 (500-1 ³ / ₈)	
CIRCLING*	1160-1 565 (600-1)	1240-1 645 (700-1)	1300-2 705 (800-2)	1300-2 ¹ / ₄ 705 (800-2 ¹ / ₄)

CLARKSVILLE, TENNESSEE

36°34'N - 87°29'W

SABRE AAF (FORT CAMPBELL) (KEOD)

Amdt 1 07SEP23

RNAV (GPS) X RWY 23

SE-1, 22 FEB 2024 to 21 MAR 2024

SE-1, 22 FEB 2024 to 21 MAR 2024

CLARKSVILLE, TENNESSEE

RNAV (GPS) X RWY 5

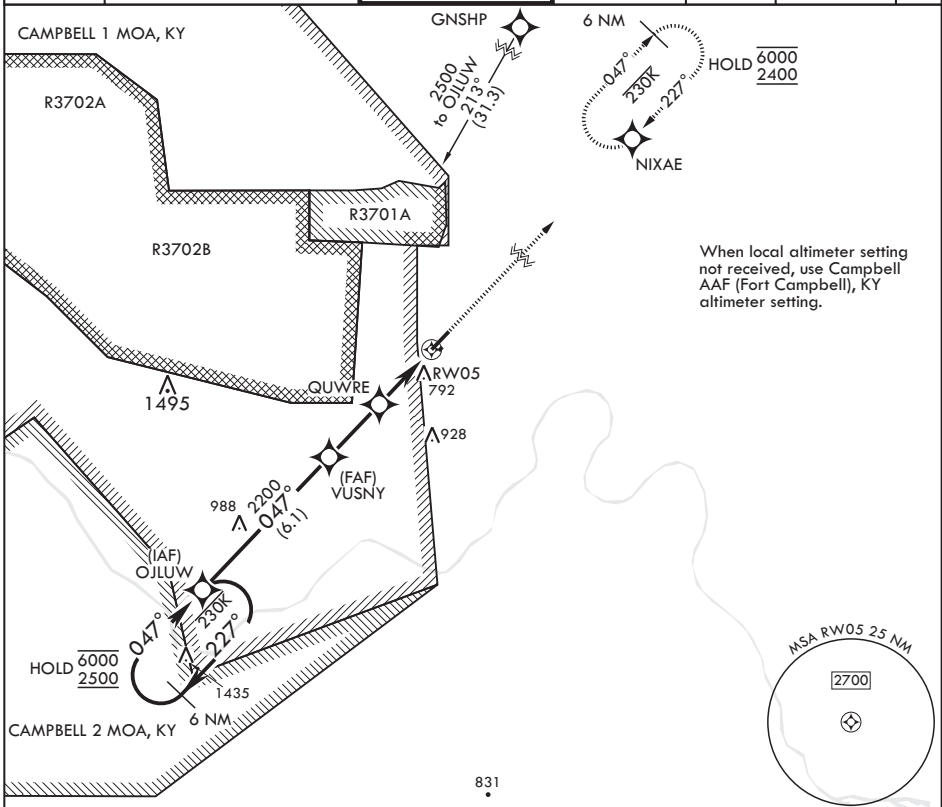
APCH CRS	Rwy Idg	5000
047°	TDZE	595
	Arprt Elev	595

AL-6373 (USA)

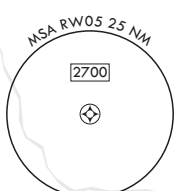
SABRE AAF (FORT CAMPBELL) (KEOD)

RNP APCH-GPS	MISSED APPROACH: Climb to 2400 direct NIXAE and hold.
RADAR required	
* Circling not authorized to Rwy 05R/23L.	

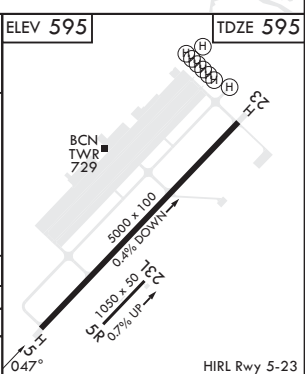
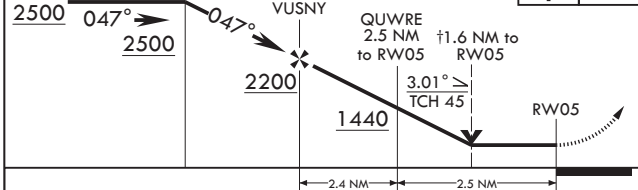
SABRE ATIS	CAMPBELL APP CON/DEP CON	TOWER *	GND CON	CLNC DEL	EAGLE RADIO	ASR
306.5	134.35 307.025	124.675 (CTAF) 290.45	142.975 267.3	237.6	285.7	



When local altimeter setting not received, use Campbell AAF (Fort Campbell), KY altimeter setting.



6 NM Holding Pattern OJLUW	† VDP NA when using Campbell AAF (Fort Campbell) altimeter setting.	2400	NIXAE	ELEV 595	TDZE 595
6000 ← 227°		↑	⊕		
2500 → 047°					



CATEGORY	A	B	C	D
LNAV MDA	1180-1 585 (600-1)	1180-1 585 (600-1)	1180-1 585 (600-1)	1180-1 585 (600-1)
CIRCLING*	1180-1 585 (600-1)	1240-1 645 (700-1)	1300-2 705 (800-2)	1300-2 705 (800-2)

CLARKSVILLE, TENNESSEE

36°34'N - 87°29'W

SABRE AAF (FORT CAMPBELL) (KEOD)

Amdt 1 10AUG23

RNAV (GPS) X RWY 5

SE-1, 22 FEB 2024 to 21 MAR 2024

SE-1, 22 FEB 2024 to 21 MAR 2024

HIRL Rwy 5-23