

APP CRS **076°**
 Rwy Idg **4897**
 TDZE **1910**
 Apt Elev **1909**

RNAV (GPS) RWY 8

BLAIRSVILLE (DZJ)

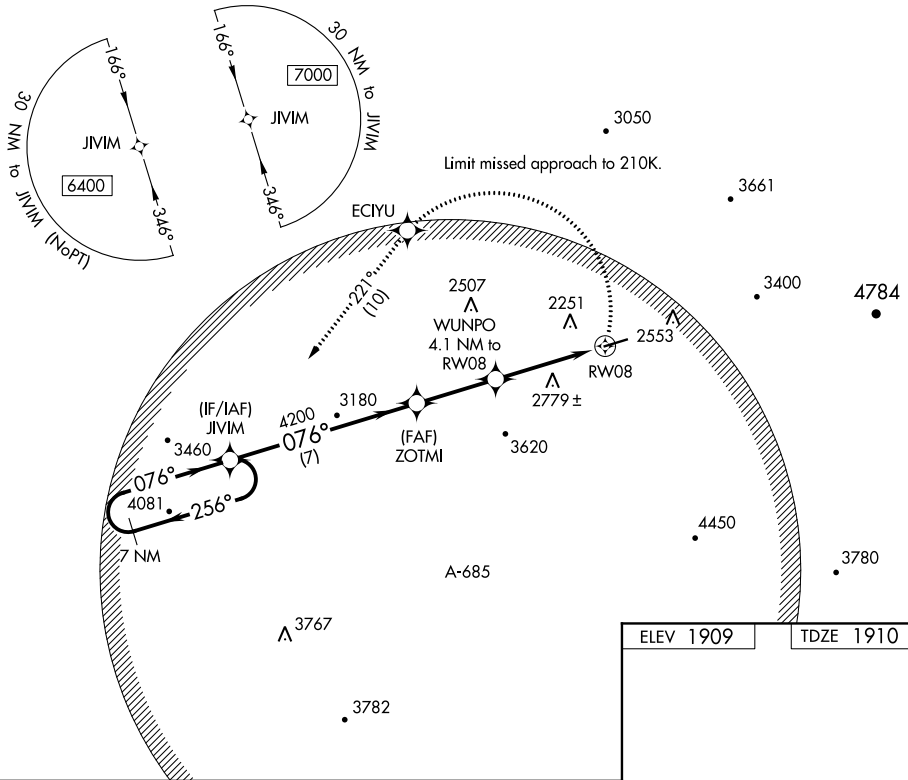
▽ When local altimeter setting not received, Procedure NA.
▲NA DME/DME RNP-0.3 NA. Procedure NA at night. Circling NA for Cat D.

MISSED APPROACH: Climbing left turn to 6400 direct ECIYU and on track 221° to JIVIM and hold, continue climb-in-hold to 6400.

AWOS-3PT
119.325

ATLANTA CENTER
134.8 379.95

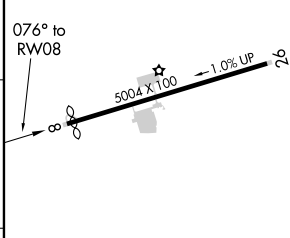
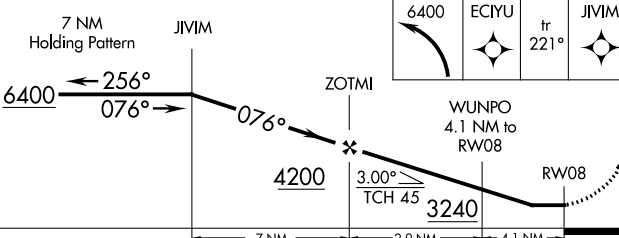
UNICOM
122.8 (CTAF) 0



SE-4, 02 DEC 2021 to 30 DEC 2021

SE-4, 02 DEC 2021 to 30 DEC 2021

ELEV 1909 TDZE 1910



CATEGORY	A	B	C	D
LNVA MDA	2940-1¼ 1030 (1100-1¼)	2940-1½ 1030 (1100-1½)	2940-3 1030 (1100-3)	
C CIRCLING	2940-1¼ 1031 (1100-1¼)	3000-1½ 1091 (1100-1½)	3160-3 1251 (1300-3)	NA

MIRL Rwy 8-26 0