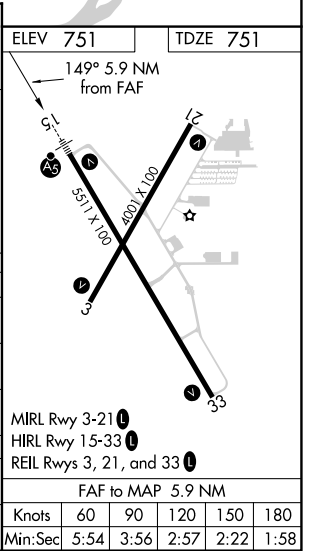
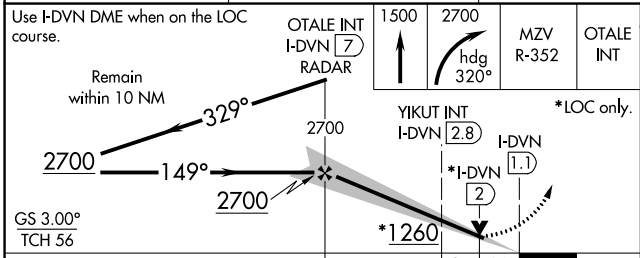
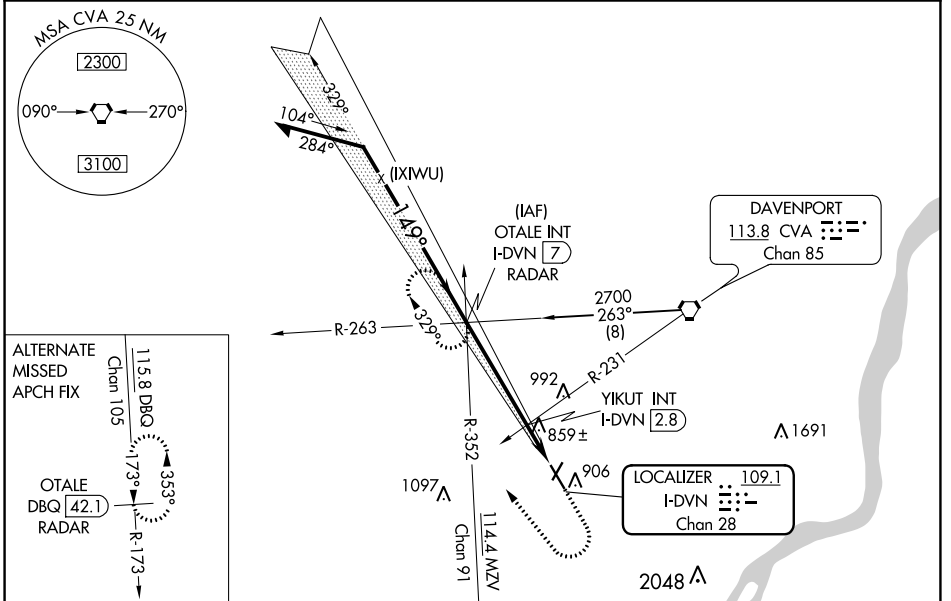


LOC/DME I-DVN 109.1 Chan 28	APP CRS 149°	Rwy Idg 5511 TDZE 751 Apt Elev 751
---	------------------------	---

ILS or LOC RWY 15

DAVENPORT MUNI (DVN)

<p>▽ For inoperative ALS, increase S-LOC 15 Cat C/D visibility to 1$\frac{1}{2}$ SM and YIKUT fix minimums S-LOC 15 Cat C/D to 1 SM.</p>	<p>MALSR</p>	<p>MISSED APPROACH: Climb to 1500 then climbing right turn to 2700 on heading 320° and on MZV VOR/DME R-352 to OTALE INT/I-DVN 7 DME/RADAR and hold.</p>	
<p>ASOS 120.175</p>	<p>QUAD CITY APP CON * 125.95 257.8</p>	<p>CLNC DEL 118.35</p>	<p>UNICOM 123.0 (CTAF) 0</p>



CATEGORY	A	B	C	D
S-ILS 15	951- $\frac{1}{2}$ 200 (200- $\frac{1}{2}$)			
S-LOC 15	1260- $\frac{1}{2}$ 509 (600-1)		1260-1 509 (600-1)	
C CIRCLING	1300-1 549 (600-1)		1300-1 $\frac{1}{2}$ 549 (600-1 $\frac{1}{2}$)	
YIKUT FIX MINIMUMS				
S-LOC 15	1100- $\frac{1}{2}$ 349 (400- $\frac{1}{2}$)		1100- $\frac{5}{8}$ 349 (400- $\frac{5}{8}$)	
C CIRCLING	1300-1 549 (600-1)		1300-1 $\frac{1}{2}$ 549 (600-1 $\frac{1}{2}$)	

NC-3, 22 FEB 2024 to 21 MAR 2024

NC-3, 22 FEB 2024 to 21 MAR 2024

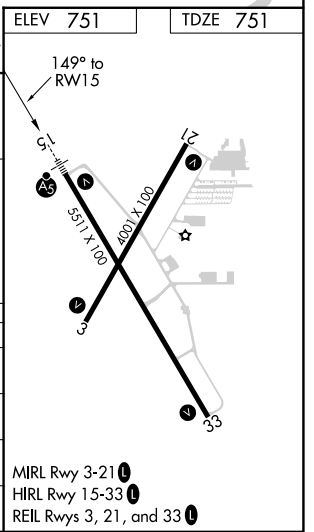
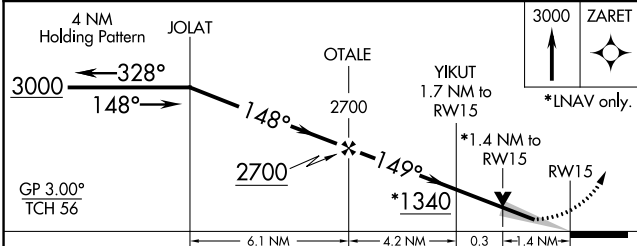
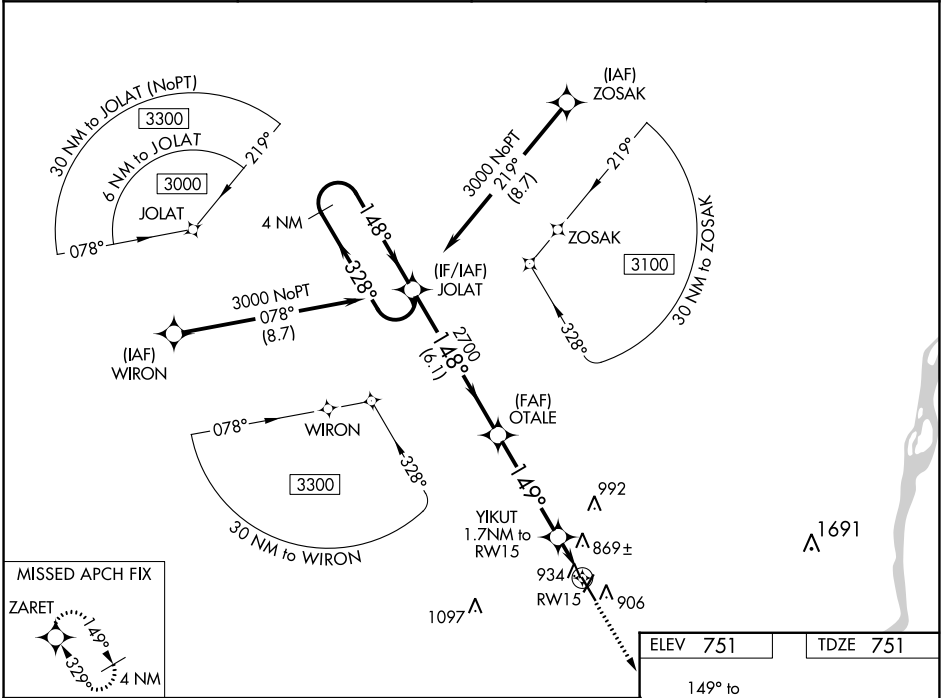
WAAS CH 81821 W15A	APP CRS 149°	Rwy ldg 5511 TDZE 751 Apt Elev 751
--	------------------------	---

RNAV (GPS) RWY 15

DAVENPORT MUNI (DVN)

RNP APCH. ▼ ▲	For inoperative ALS, increase LNAV/VNAV visibility to 1½ SM LNAV Cat C/D visibility to 1½ SM.	MALS/R AS	MISSED APPROACH: Climb to 3000 direct ZARET and hold.
---------------------	---	--------------	---

ASOS 120.175	QUAD CITY APP CON ★ 125.95 257.8	CLNC DEL 118.35	UNICOM 123.0 (CTAF) 0
------------------------	--	---------------------------	---------------------------------



CATEGORY	A	B	C	D
LPV DA	951-½		200 (200-½)	
LNAV/VNAV DA	1171-7/8		420 (500-7/8)	
LNAV MDA	1240-½ 489 (500-½)		1240-1 489 (500-1)	
CIRCLING	1300-1 549 (600-1)		1300-1½ 549 (600-1½) 1320-2 569 (600-2)	

NC-3, 22 FEB 2024 to 21 MAR 2024

NC-3, 22 FEB 2024 to 21 MAR 2024

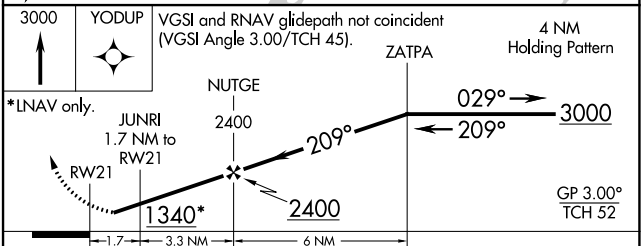
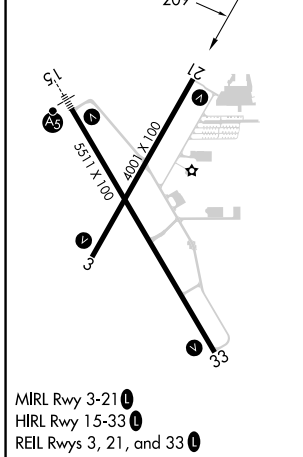
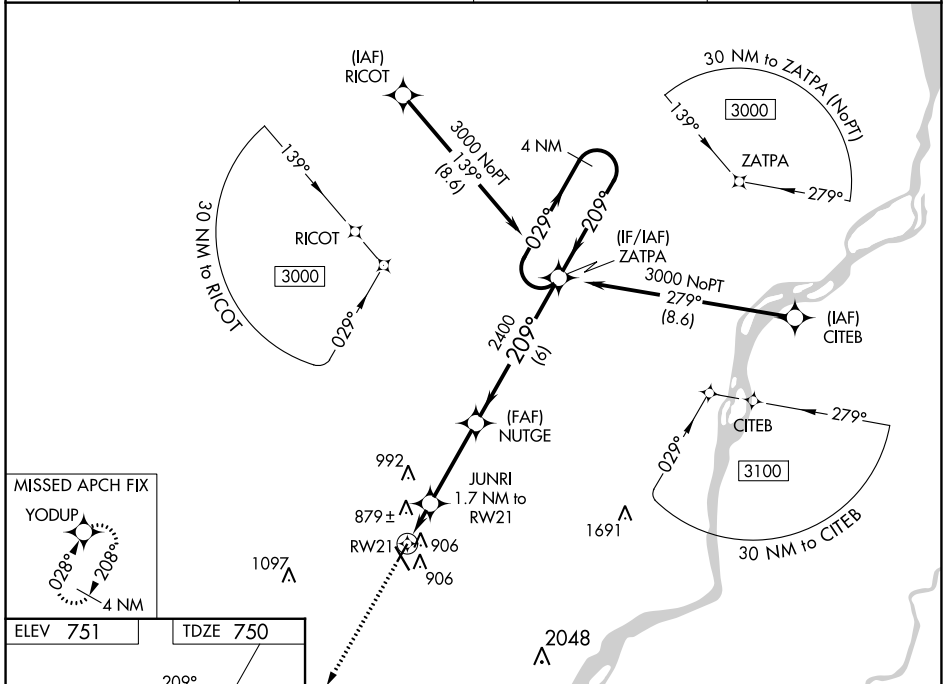
WAAS CH 50320 W21A	APP CRS 209°	Rwy Idg 4001 TDZE 750 Apt Elev 751
---------------------------------	------------------------	---

RNAV (GPS) RWY 21

DAVENPORT MUNI (DVN)

RNP APCH.	MISSED APPROACH: Climb to 3000 direct YODUP and hold.
<p>⚠ For uncompensated Baro-VNAV systems, LNAV/VNAV NA below -16°C (4°F) or above 54°C (130°F). Rwy 21 helicopter visibility reduction below 1 SM NA.</p>	

ASOS 120.175	QUAD CITY APP CON * 125.95 257.8	CLNC DEL 118.35	UNICOM 123.0 (CTAF) ①
------------------------	--	---------------------------	---------------------------------



CATEGORY	A	B	C	D
LPV DA		1046-1	296 (300-1)	
LNAV/VNAV DA		1184-1½	434 (500-1½)	
LNAV MDA	1180-1	430 (500-1)	1180-1¼	430 (500-1¼)
C CIRCLING	1220-1	469 (500-1)	1300-1½ 549 (600-1½)	1320-2 569 (600-2)

NC-3, 22 FEB 2024 to 21 MAR 2024

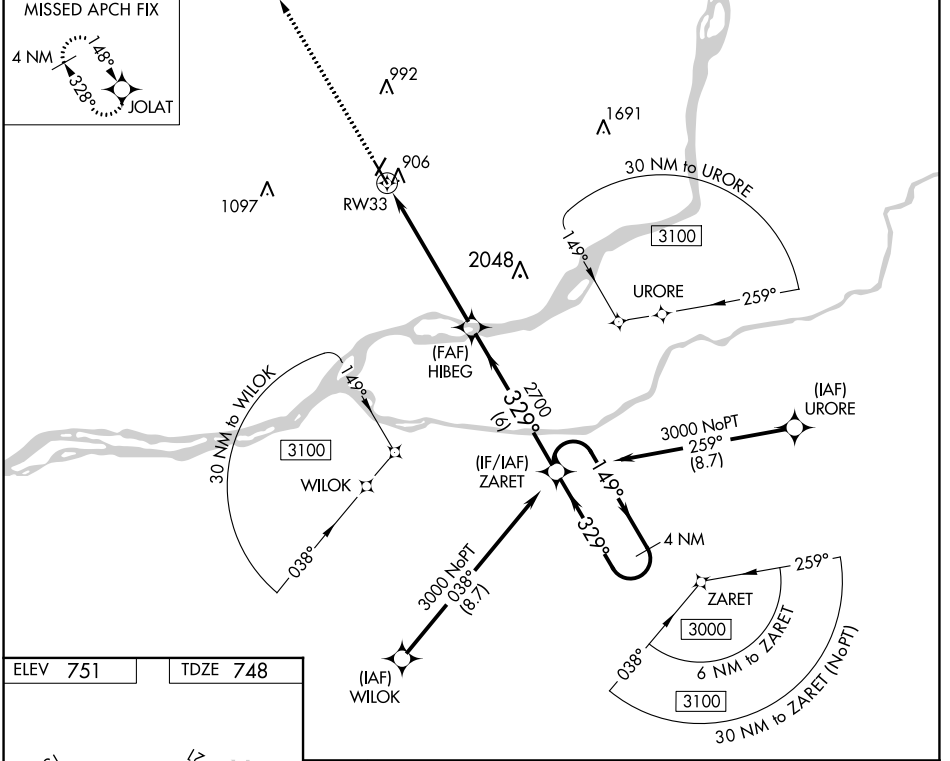
NC-3, 22 FEB 2024 to 21 MAR 2024

WAAS CH 56324 W33A	APP CRS 329°	Rwy Idg TDZE 748 Apt Elev 751	5511 748 751
--	------------------------	---	---

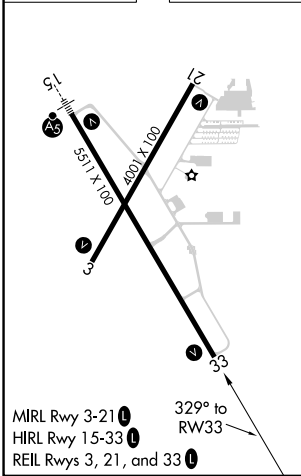
RNAV (GPS) RWY 33

DAVENPORT MUNI (DVN)

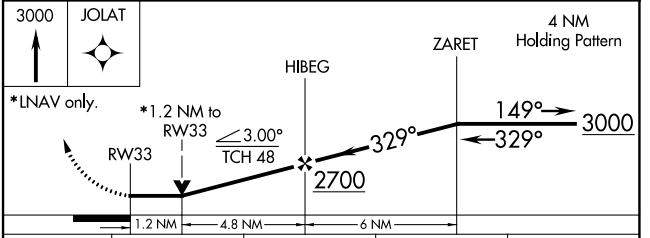
RNP APCH.		MISSED APPROACH: Climb to 3000 direct JOLAT and hold.	
Rwy 33 helicopter visibility reduction below 3/4 SM NA.			
ASOS 120.175	QUAD CITY APP CON * 125.95 257.8	CLNC DEL 118.35	UNICOM 123.0 (CTAF) 0



ELEV 751	TDZE 748
----------	----------



DAVENPORT, IOWA
Amdt 1E 08OCT20



CATEGORY	A	B	C	D
LP MDA	1160-1	412 (500-1)	1160-1½	412 (500-1½)
LNAV MDA	1160-1	412 (500-1)	1160-1½	412 (500-1½)
CIRCLING	1300-1	549 (600-1)	1300-1½ 549 (600-1½)	1320-2 569 (600-2)

NC-3, 22 FEB 2024 to 21 MAR 2024

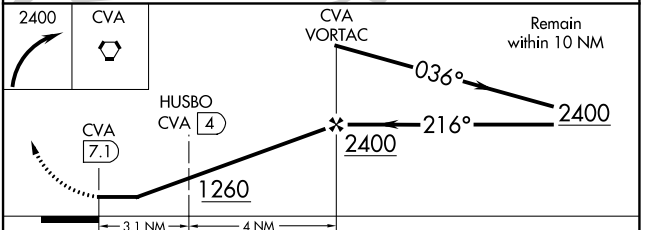
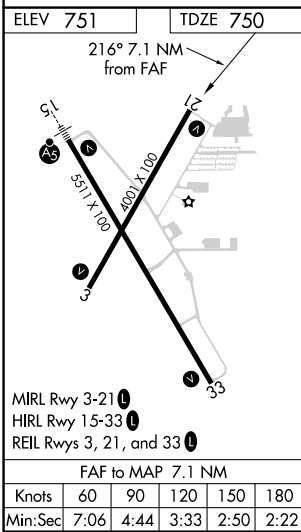
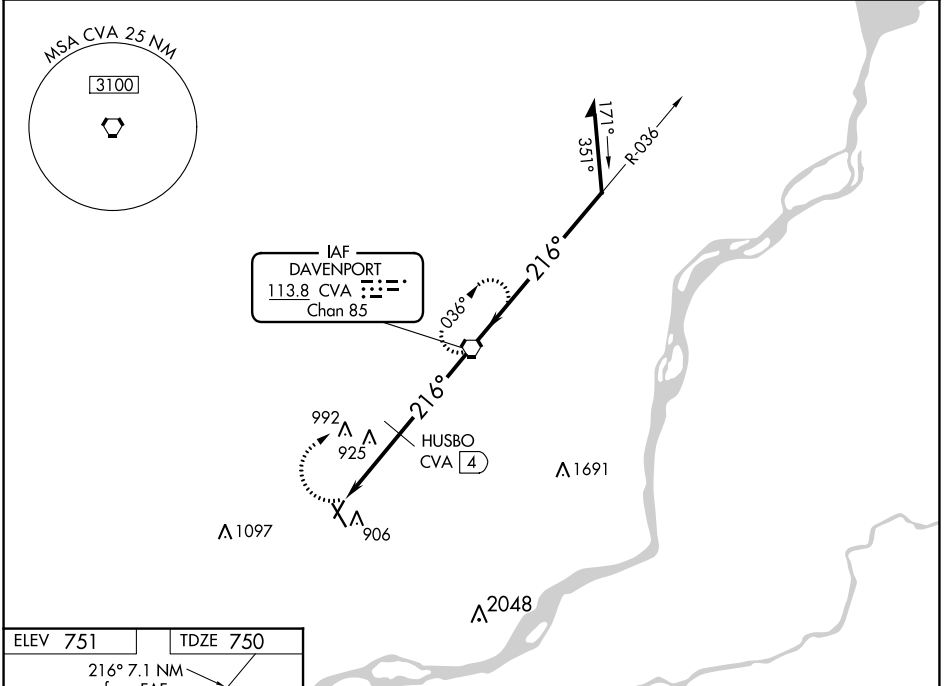
NC-3, 22 FEB 2024 to 21 MAR 2024

VORTAC CVA 113.8 Chan 85	APP CRS 216°	Rwy Idg TDZE 750 Apt Elev 751	4001
--	------------------------	---	-------------

VOR RWY 21

DAVENPORT MUNI (DVN)

<p>▽ ▲</p> <p>Rwy 21 helicopter visibility reduction below 1 SM NA.</p>		<p>MISSED APPROACH: Climbing right turn to 2400 direct CVA VORTAC and hold.</p>	
ASOS 120.175	QUAD CITY APP CON * 125.95 257.8	CLNC DEL 118.35	UNICOM 123.0 (CTAF) 0



CATEGORY	A	B	C	D
S-21	1260-1 510 (600-1)		1260-1 $\frac{3}{8}$ 510 (600-1 $\frac{3}{8}$)	
C CIRCLING	1300-1 549 (600-1)		1300-1 $\frac{1}{2}$ 549 (600-1 $\frac{1}{2}$)	1320-2 569 (600-2)
HUSBO FIX MINIMUMS (DME REQUIRED)				
S-21	1200-1 450 (500-1)		1200-1 $\frac{3}{8}$ 450 (500-1 $\frac{3}{8}$)	
C CIRCLING	1300-1 549 (600-1)		1300-1 $\frac{1}{2}$ 549 (600-1 $\frac{1}{2}$)	1320-2 569 (600-2)

NC-3, 22 FEB 2024 to 21 MAR 2024

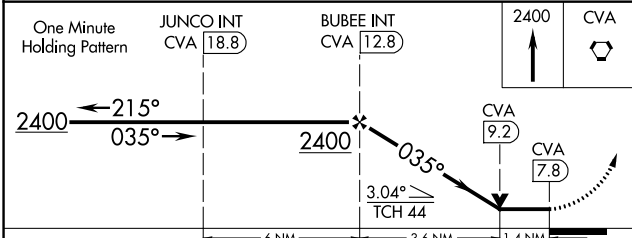
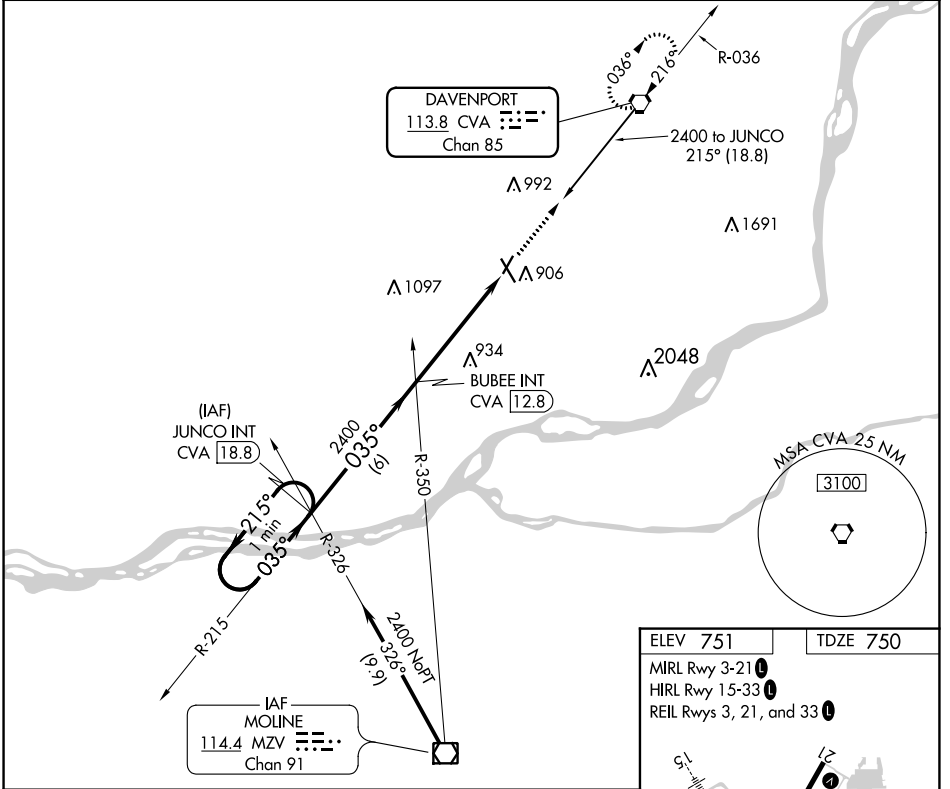
NC-3, 22 FEB 2024 to 21 MAR 2024

VORTAC CVA 113.8 Chan 85	APP CRS 035°	Rwy Idg TDZE 750 Apt Elev 751	4001
--	------------------------	---	-------------

VOR RWY 3

DAVENPORT MUNI (DVN)

<p>▽ ▲ Rwy 3 helicopter visibility reduction below ¾ SM NA.</p>		<p>MISSED APPROACH: Climb to 2400 direct CVA VORTAC and hold.</p>	
ASOS 120.175	QUAD CITY APP CON * 125.95 257.8	CLNC DEL 118.35	UNICOM 123.0 (CTAF) ①



ELEV 751	TDZE 750
MIRL Rwy 3-21 ①	HIRL Rwy 15-33 ①
REIL Rws 3, 21, and 33 ①	

FAF to MAP 5 NM					
Knots	60	90	120	150	180
Min:Sec	5:00	3:20	2:30	2:00	1:40

CATEGORY	A	B	C	D
S-3	1240-1 490 (500-1)		1240-1½ 490 (500-1½)	1240-1½ 490 (500-1½)
C CIRCLING	1300-1 549 (600-1)		1300-1½ 549 (600-1½)	1320-2 569 (600-2)

NC-3, 22 FEB 2024 to 21 MAR 2024

NC-3, 22 FEB 2024 to 21 MAR 2024