

WAAS CH 93619 W17A	APP CRS 175°	Rwy Idg 6326 TDZE 1114 Apt Elev 1114
--	------------------------	---

RNAV (GPS) RWY 17

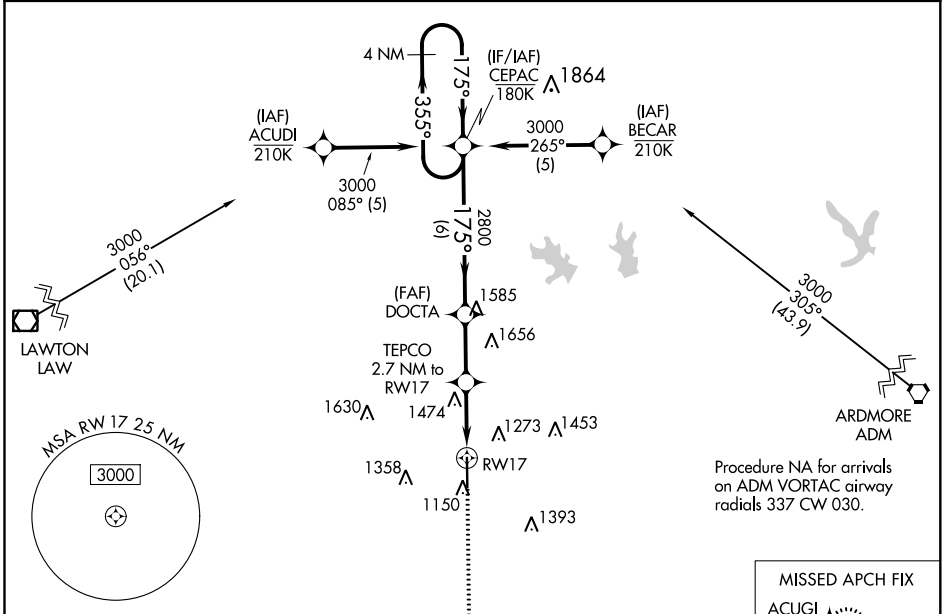
HALLIBURTON FIELD (DUC)

For uncompensated Baro-VNAV systems, LNAV/VNAV NA below -17°C (2°F) or above 54°C (130°F). DME/DME RNP-0.3 NA. Inop table does not apply to LPV all Cats, LNAV/VNAV all Cats, LNAV Cats C/D.



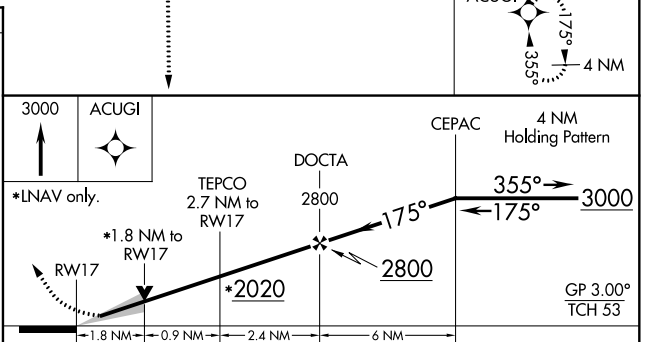
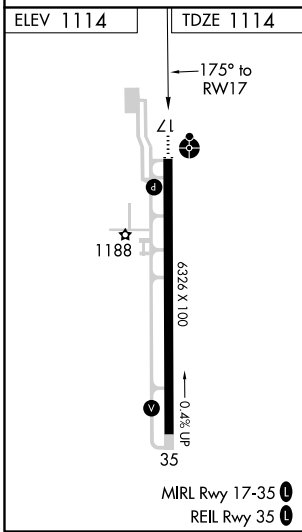
MISSED APPROACH:
Climb to 3000 direct
ACUGI and hold.

AWOS-3 119.075	FORT SILL APP CON 118.6 290.375	CLNC DEL 118.4	UNICOM 122.8 (CTAF) 0
--------------------------	---	--------------------------	---------------------------------



SC-1, 03 DEC 2020 to 31 DEC 2020

SC-1, 03 DEC 2020 to 31 DEC 2020



CATEGORY	A	B	C	D
LPV DA		1314-3/4	200 (200-3/4)	
LNAV/VNAV DA		1806-2 1/2	692 (700-2 1/2)	
LNAV MDA	1740-3/4	626 (700-3/4)	1740-1 3/4	626 (700-1 3/4)
<input checked="" type="checkbox"/> CIRCLING	1740-1	626 (700-1)	1780-1 3/4	1780-2
			666 (700-1 3/4)	666 (700-2)

WAAS CH 40241 W35A	APP CRS 355°	Rwy Idg TDZE Apt Elev	6326 1094 1114
--	------------------------	-----------------------------	---

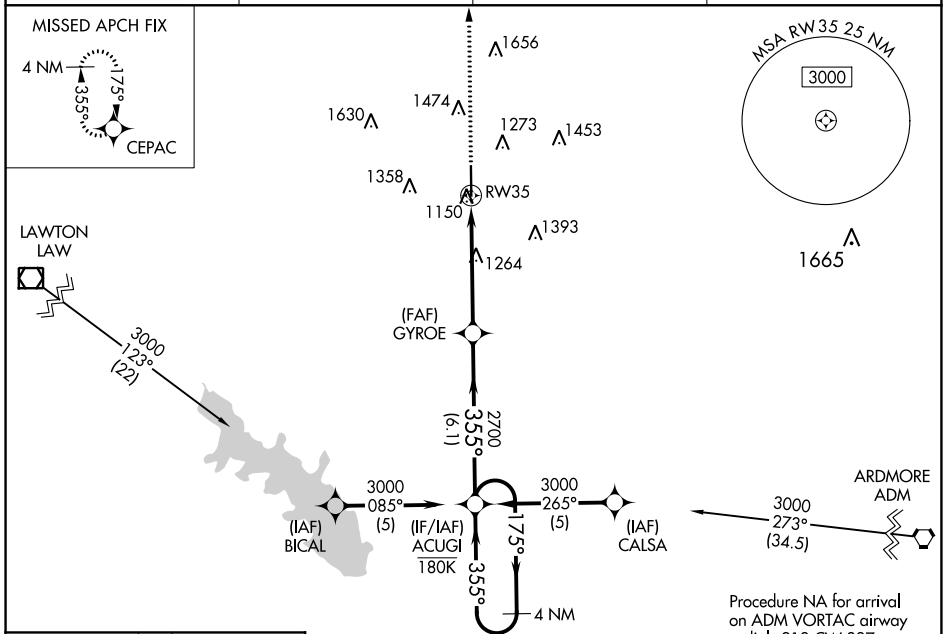
RNAV (GPS) RWY 35

HALLIBURTON FIELD (DUC)

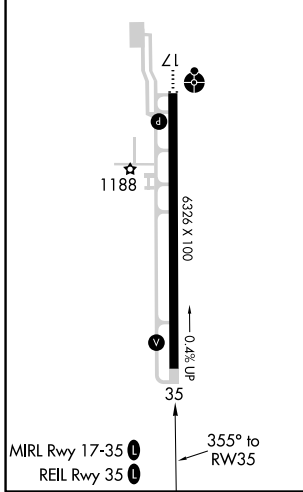
For uncompensated Baro-VNAV systems, LNAV/VNAV NA below -17° (2°F) or above 54°C (130°F). DME/DME RNP-0.3 NA.

MISSED APPROACH: Climb to 3000 direct CEPAC and hold.

AWOS-3 119.075	FORT SILL APP CON 118.6 290.375	CLNC DEL 118.4	UNICOM 122.8 (CTAF)
--------------------------	---	--------------------------	-------------------------------



ELEV 1114	TDZE 1094
-----------	-----------



3000	CEPAC	ACUGI	4 NM Holding Pattern
*LNAV only.		GYROE 2700	175° → 3000
RW35		2700	← 355°
1.2 NM to RW35		6.1 NM	GP 3.00° TCH 42
CATEGORY		A	B
LPV DA		1294-3/4	200 (200-3/4)
LNAV/VNAV DA		1397-7/8	303 (300-7/8)
LNAV MDA	1520-1	426 (500-1)	1520-1 1/4 426 (500-1 1/4)
CIRCLING	1560-1 446 (500-1)	1580-1 466 (500-1)	1780-1 3/4 666 (700-1 3/4) 1780-2 666 (700-2)

SC-1, 03 DEC 2020 to 31 DEC 2020

SC-1, 03 DEC 2020 to 31 DEC 2020