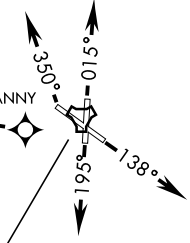


AL-562 [USAF]

**TOP ALTITUDE  
3000**



RNAV 1  
**GPS REQUIRED  
RADAR REQUIRED**

**DEPARTURE ROUTE DESCRIPTION**

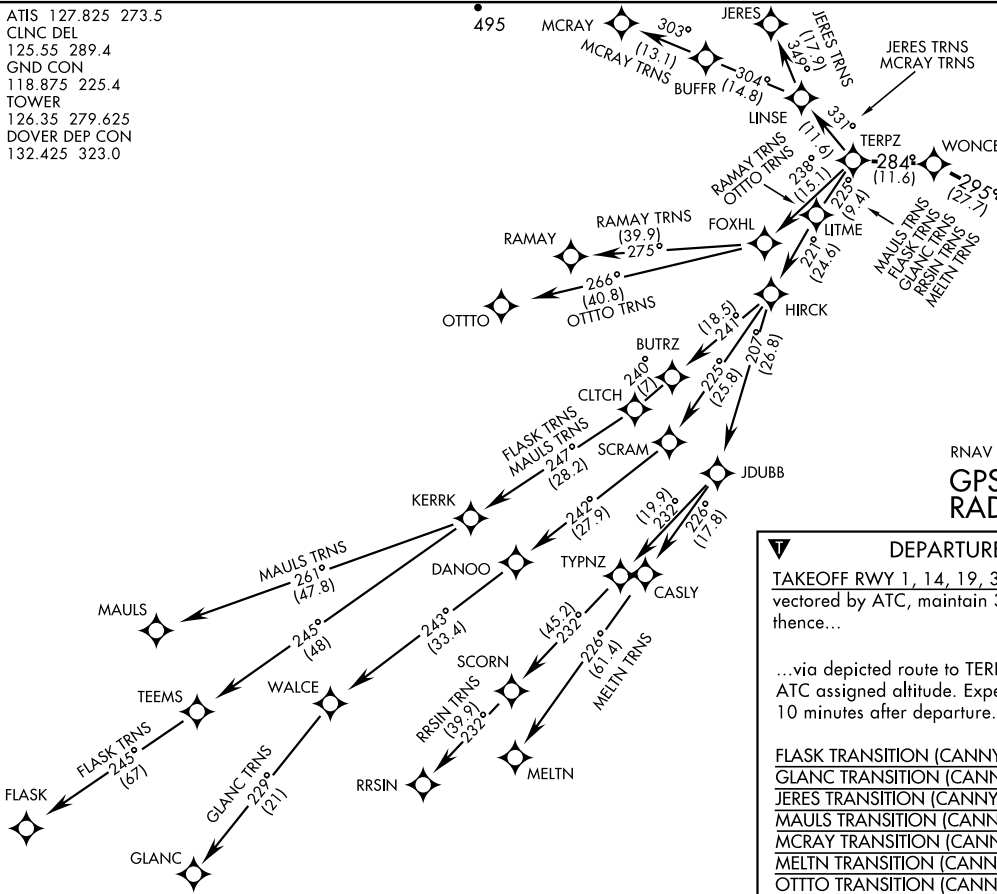
TAKEOFF RWY 1, 14, 19, 32: Climb on depicted heading until vectored by ATC, maintain 3000. Expect RADAR vectors to CANNY, thence...

...via depicted route to TERPZ, then via assigned transition. Maintain ATC assigned altitude. Expect further clearance to filed altitude within 10 minutes after departure.

FLASK TRANSITION (CANNY1.FLASK)  
 GLANC TRANSITION (CANNY1.GLANC)  
 JERES TRANSITION (CANNY1.JERES)  
 MAULS TRANSITION (CANNY1.MAULS)  
 MCRAY TRANSITION (CANNY1.MCRAY)  
 MELTN TRANSITION (CANNY1.MELTN)  
 OTTO TRANSITION (CANNY1.OTTO)  
 RAMAY TRANSITION (CANNY1.RAMAY)  
 RRSIN TRANSITION (CANNY1.RRSIN)

NOTE: Chart not to scale

ATIS 127.825 273.5  
CLNC DEL  
125.55 289.4  
GND CON  
118.875 225.4  
TOWER  
126.35 279.625  
DOVER DEP CON  
132.425 323.0

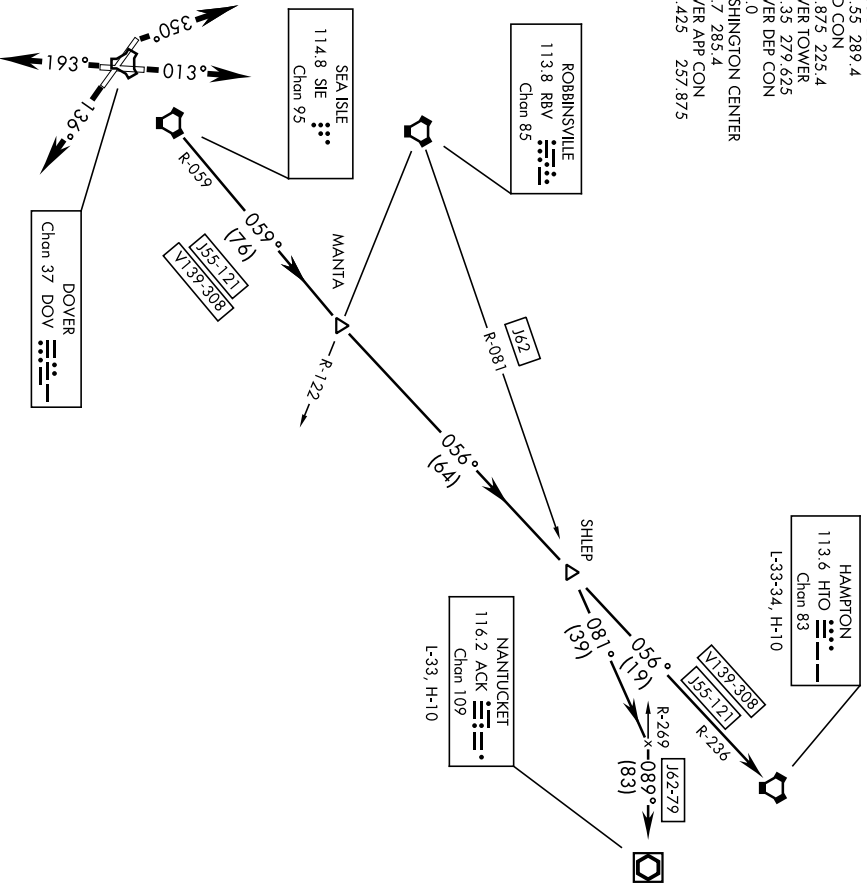


# SEA ISLE-FIVE DEPARTURE (SIE5•SIE)

SHL-562 (USAF)

DOVER AFB (KDOV)  
DOVER, DELAWARE

ATIS 127.825 273.5  
 CLNC DEL  
 125.55 289.4  
 GND CON  
 118.875 225.4  
 DOVER TOWER  
 126.35 279.625  
 DOVER DEP CON  
 323.0  
 WASHINGTON CENTER  
 127.7 285.4  
 DOVER APP CON  
 132.425 257.875



RWY 32 TODA 10,070'

NOTE: Chart not to scale

## RADAR REQUIRED

### DEPARTURE ROUTE DESCRIPTION

- TAKE-OFF RWY 1: Climb on a track of 013° for RADAR vectors to SIE VORTAC. Thence...
- TAKE-OFF RWY 14: Climb on a track of 136° for RADAR vectors to SIE VORTAC. Thence...
- TAKE-OFF RWY 19: Climb on a track of 193° for RADAR vectors to SIE VORTAC. Thence...
- TAKE-OFF RWY 32: Climb on a track of 350° for RADAR vectors to SIE VORTAC. Thence...

Via (Transition) or (Assigned Route).

HAMPTON TRANSITION: (SIE5•HTO) Via SIE R-059 and HTO VORTAC R-236 to HTO.

NANTUCKET TRANSITION: (HIGH ALT ONLY) (SIE5•ACK) Via SIE R-059, HTO VORTAC R-236 and 162 to ACK VOR/DME.

## SEA ISLE-FIVE DEPARTURE (SIE5•SIE)

DOVER, DELAWARE  
DOVER AFB (KDOV)