

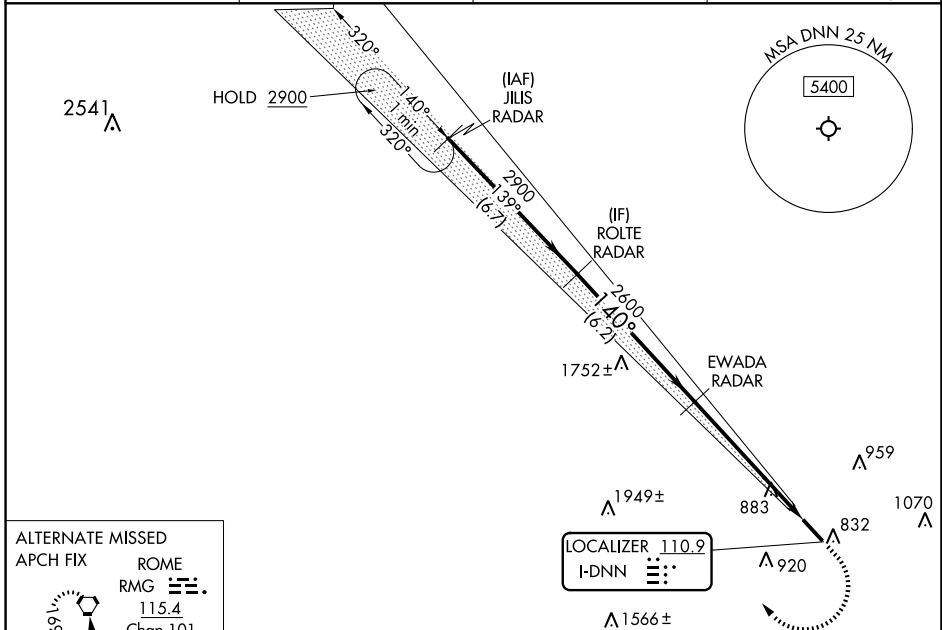
LOC I-DNN <b>110.9</b>	APP CRS <b>140°</b>	Rwy Idg TDZE Apt Elev	<b>5496</b> <b>709</b> <b>709</b>
---------------------------	------------------------	-----------------------------	---

# ILS or LOC RWY 14

DALTON MUNI (DNN)

RNP APCH - GPS. RADAR required.	MALSR 	MISSED APPROACH: Climb to 1700 then climbing right turn to 3000 direct JILS and hold.
Circling to Rwy 32 NA at night. Autopilot coupled approach NA below 1200 MSL. Rwy 14 helicopter visibility reduction below 3/4 SM NA. Inop table does not apply to S-ILS 14. For inop ALS, increase S-LOC 14 Cat A/B visibility to 1 SM.		

AWOS-3PT <b>127.65</b>	CHATTANOOGA APP CON ★ <b>125.1 379.1</b>	CLNC DEL <b>120.25</b>	UNICOM <b>122.975</b> (CTAF)
---------------------------	---	---------------------------	---------------------------------

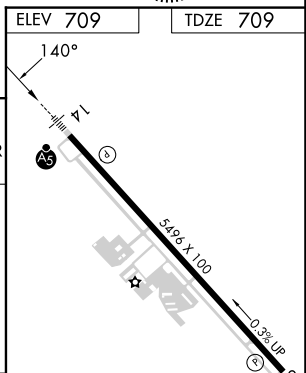
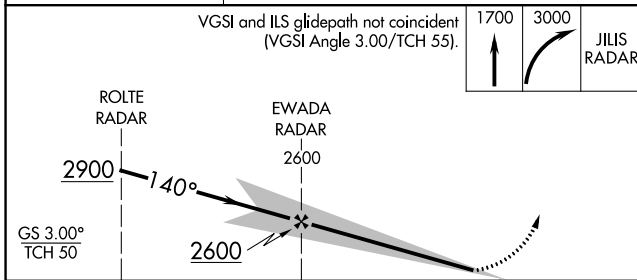


ALTERNATE MISSED APCH FIX

ROME  
RMG   
115.4  
Chan 101

169° and 349° angles shown.

R-169



CATEGORY	A	B	C	D
S-ILS 14	1074-3/4		365 (400-3/4)	
S-LOC 14	1260-3/4	551 (600-3/4)	1260-1 1/8	551 (600-1 1/8)
CIRCLING	1260-1	551 (600-1)	1340-1 3/4 631 (700-1 3/4)	1420-2 1/4 711 (800-2 1/4)

HIRL Rwy 14-32

FAF to MAP 5.8 NM

Knots	60	90	120	150	180
Min:Sec	5:48	3:52	2:54	2:19	1:56

SE-4, 22 FEB 2024 to 21 MAR 2024

SE-4, 22 FEB 2024 to 21 MAR 2024

WAAS CH <b>65801</b> <b>W14A</b>	APP CRS <b>140°</b>	Rwy Idg TDZE Apt Elev	<b>5496</b> <b>709</b> <b>709</b>
--	------------------------	-----------------------------	---

# RNAV (GPS) RWY 14

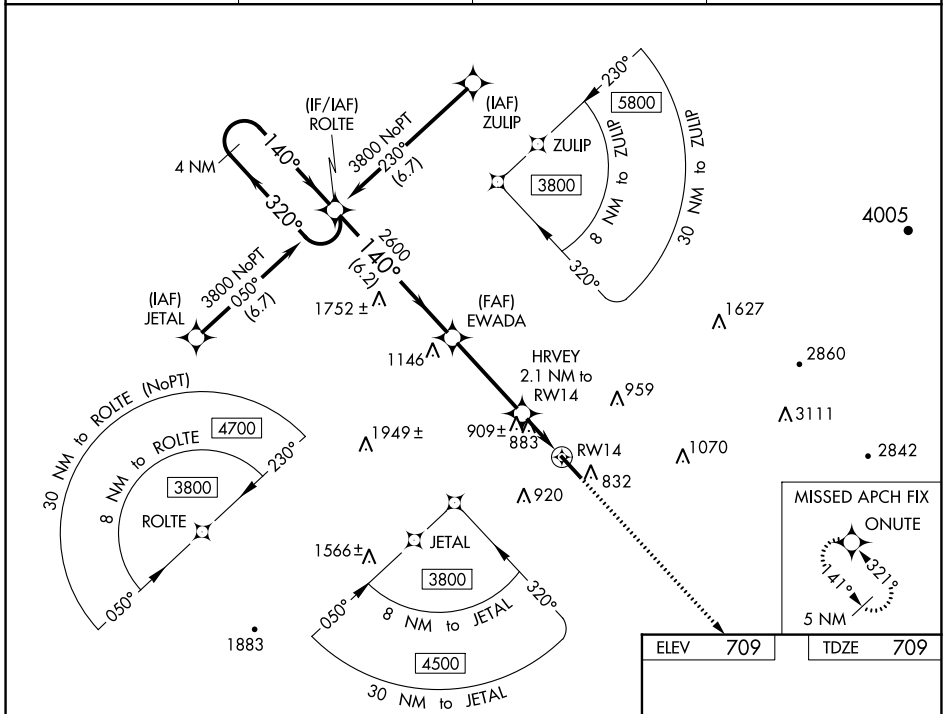
DALTON MUNI (DNN)

**⚠** Circling to Rwy 32 NA at night. For uncompensated Baro-VNAV systems, LNAV/VNAV NA below -16°C (4°F) or above 54°C (130°F).  
**⚠** DME/DME RNP-0.3 NA. Rwy 14 helicopter visibility reduction below 3/4 SM NA. Inop table does not apply to LPV.



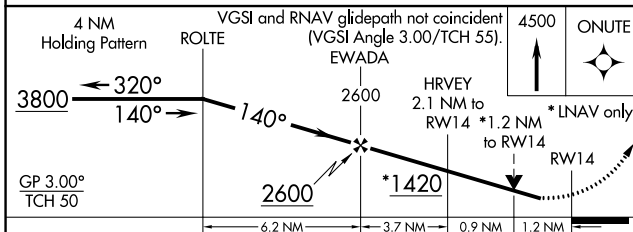
**MISSED APPROACH:** Climb to 4500 direct ONUTE and hold, continue climb-in-hold to 4500.

AWOS-3PT <b>127.65</b>	CHATTANOOGA APP CON ★ <b>125.1 379.1</b>	CLNC DEL <b>120.25</b>	UNICOM <b>122.975 (CTAF) 0</b>
---------------------------	---	---------------------------	-----------------------------------

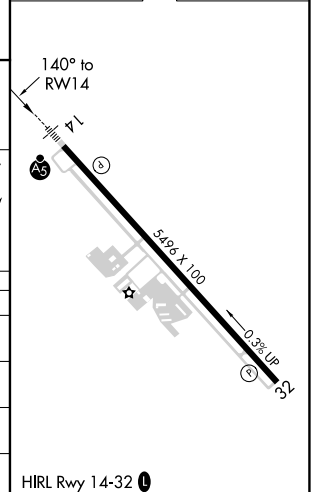


SE-4, 22 FEB 2024 to 21 MAR 2024

SE-4, 22 FEB 2024 to 21 MAR 2024



ELEV	709	TDZE	709
------	-----	------	-----



CATEGORY	A	B	C	D
LPV DA	959-3/4		250 (300-3/4)	
LNAV/VNAV DA	1173-1 1/8		464 (500-1 1/8)	
LNAV MDA	1160-3/4	451 (500-3/4)	1160-7/8	451 (500-7/8)
<b>C</b> CIRCLING	1220-1	511 (600-1)	1260-1 1/2	1420-2 1/4
			551 (600-1 1/2)	711 (800-2 1/4)

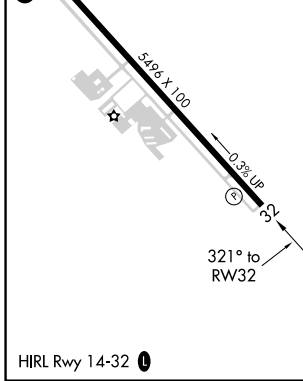
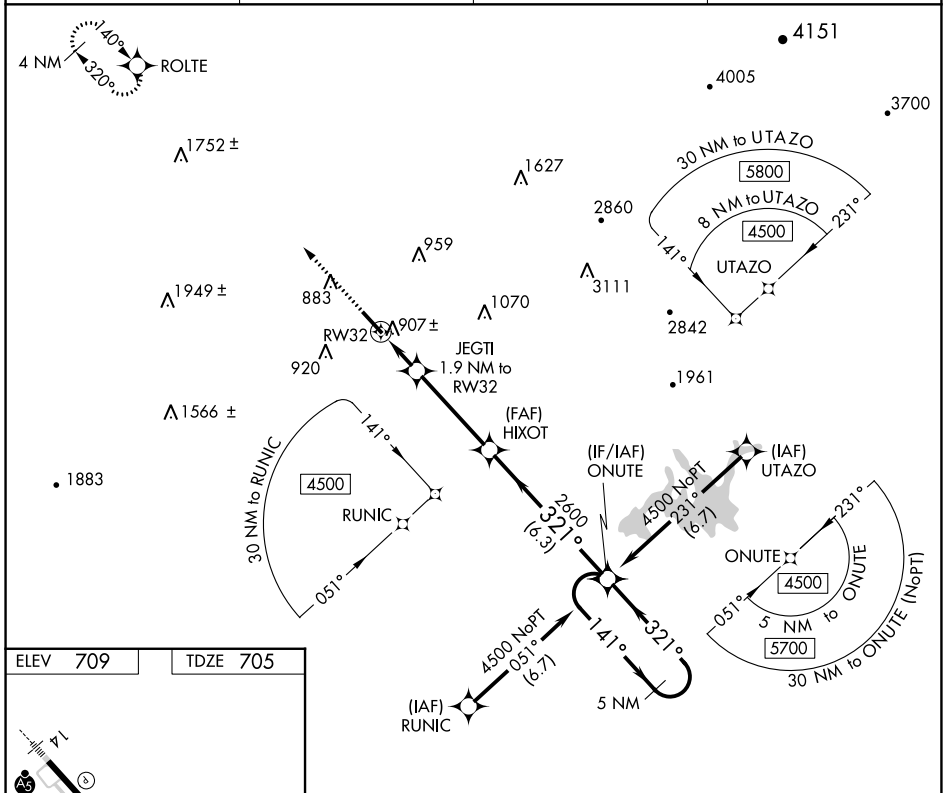
HIRL Rwy 14-32 0

APP CRS <b>321°</b>	Rwy Idg <b>5496</b>
	TDZE <b>705</b>
	Apt Elev <b>709</b>

# RNAV (GPS) RWY 32

DALTON MUNI (DNN)

RNP APCH. ▼ Rwy 32 helicopter visibility reduction below 1 SM NA. ▲ Straight-in Rwy 32 NA at night, Circling Rwy 32 NA at night.		MISSED APPROACH: Climb to 3800 direct ROTLE and hold, continue climb-in-hold to 3800.	
AWOS-3PT <b>127.65</b>	CHATTANOOGA APP CON ★ <b>125.1 379.1</b>	CLNC DEL <b>120.25</b>	UNICOM <b>122.975 (CTAF)</b>



ELEV 709	TDZE 705			
3800	ROLTE	Visual Segment - Obstacles.		
		ONUTE 5 NM Holding Pattern		
CATEGORY	A	B	C	D
LNAV MDA	1180-1	475 (500-1)	1180-1 $\frac{3}{4}$	475 (500-1 $\frac{3}{4}$ )
CIRCLING	1220-1	511 (600-1)	1340-1 $\frac{3}{4}$ 631 (700-1 $\frac{3}{4}$ )	1420-2 $\frac{1}{4}$ 711 (800-2 $\frac{1}{4}$ )

SE-4, 22 FEB 2024 to 21 MAR 2024

SE-4, 22 FEB 2024 to 21 MAR 2024