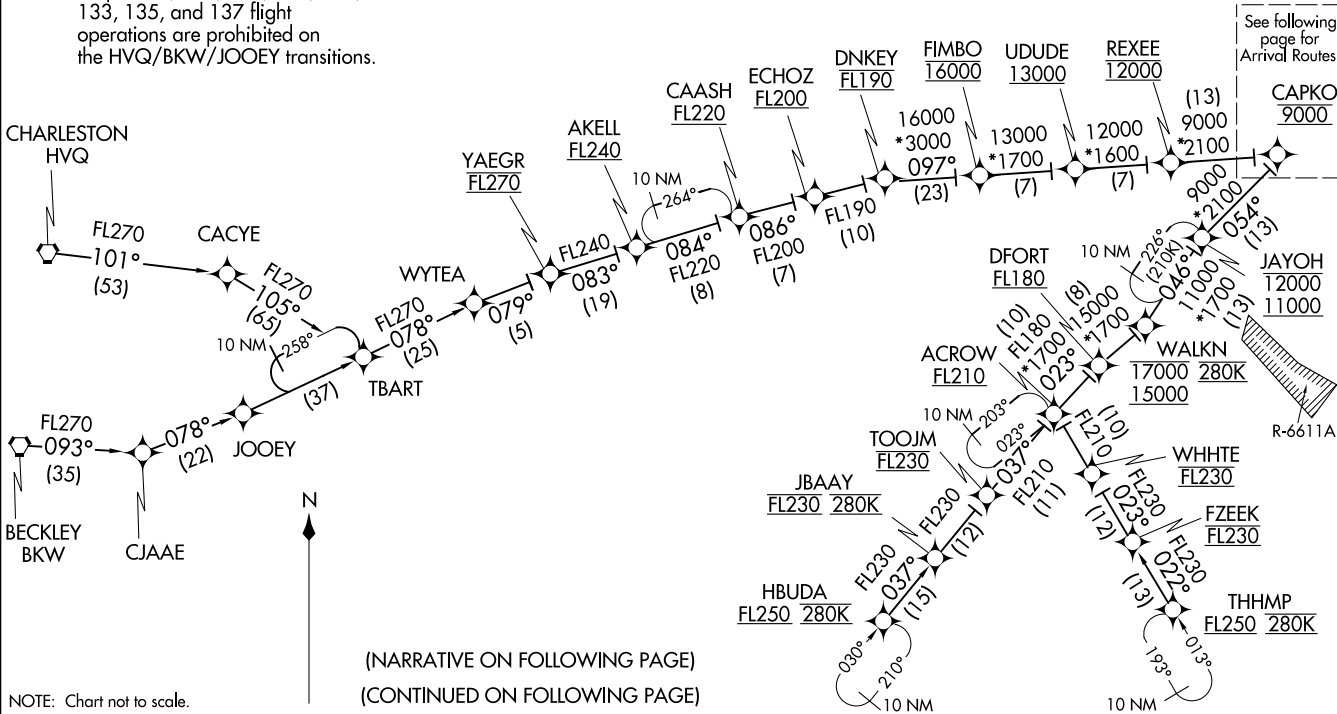


RAVNN SIX ARRIVAL (RNAV) Transition Routes  
(CAPKO.RAVNN6) 10DECI5

POTOMAC APP CON  
128.35 270.275  
BWI D-ATIS  
115.1 127.8

- NOTE: RADAR required.
- NOTE: RNAV 1.
- NOTE: DME/DME/IRU or GPS required.
- NOTE: Turbojet aircraft only.
- NOTE: All part 91, 101, 103, 105, 125, 133, 135, and 137 flight operations are prohibited on the HVQ/BKW/JOOEY transitions.

BECKLEY TRANSITION (BKW.RAVNN6)  
 CHARLESTON TRANSITION (HVQ.RAVNN6)  
 HBUDA TRANSITION (HBUDA.RAVNN6): (ATC assigned only).  
 JOOEY TRANSITION (JOOEY.RAVNN6): (ATC assigned only).  
 THHMP TRANSITION (THHMP.RAVNN6)



See following page for Arrival Routes.

RAVNN SIX ARRIVAL (RNAV) Transition Routes  
(CAPKO.RAVNN6) 201798  
AL-804 (FAA)  
BALTIMORE, MARYLAND

# RAVNN SIX ARRIVAL (RNAV) Arrival Routes

POTOMAC APP CON  
128.35 270.275  
BWI D-ATIS  
115.1 127.8

**HUNNN**

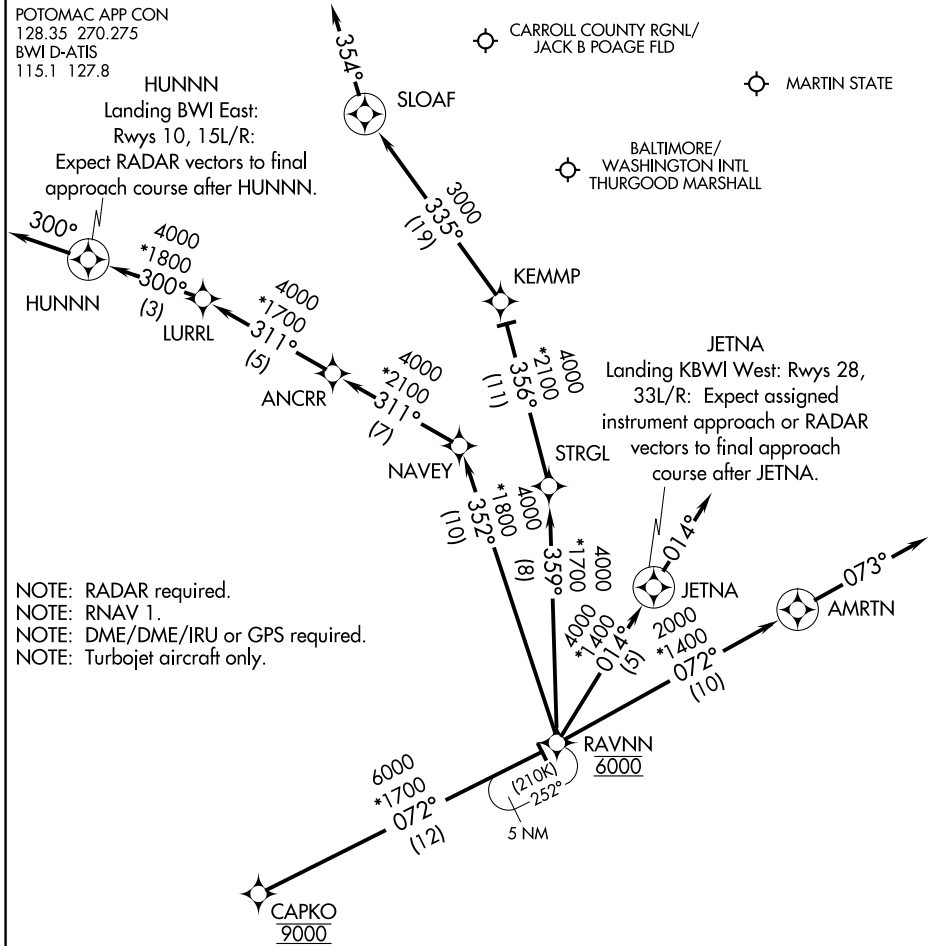
Landing BWI East:  
Rwys 10, 15L/R:

Expect RADAR vectors to final approach course after HUNNN.

CARROLL COUNTY RGNL/  
JACK B POAGE FLD

MARTIN STATE

BALTIMORE/  
WASHINGTON INTL  
THURGOOD MARSHALL



- NOTE: RADAR required.
- NOTE: RNAV 1.
- NOTE: DME/DME/IRU or GPS required.
- NOTE: Turbjet aircraft only.

NOTE: Chart not to scale.

## ARRIVAL ROUTE DESCRIPTION

From CAPKO on track 072° to cross RAVNN at 6000.

LANDING BWI RUNWAYS 10, 15L/R: From RAVNN on track 352° to NAV, then on track 311° to ANCR, then on track 311° to LURRL, then on track 300° to HUNNN, then on track 300°.  
Expect RADAR vectors to final approach course.

LANDING BWI RUNWAYS 28, 33L/R: From RAVNN on track 014° to JETNA, then on track 014°.  
Expect assigned instrument approach or RADAR vectors to final approach course.

LANDING DMW: From CAPKO on track 072° to cross RAVNN at 6000, then on track 359° to STRGL, then on track 356° to KEMMP, then on track 335° to SLOAF, then on heading 354°.  
Expect RADAR vectors to final approach course.

LANDING MTN: From CAPKO on track 072° to cross RAVNN at 6000, then on track 072° to AMRTN, then on track 073°. Expect RADAR vectors to final approach course.

NE-3, 18 MAY 2023 to 15 JUN 2023

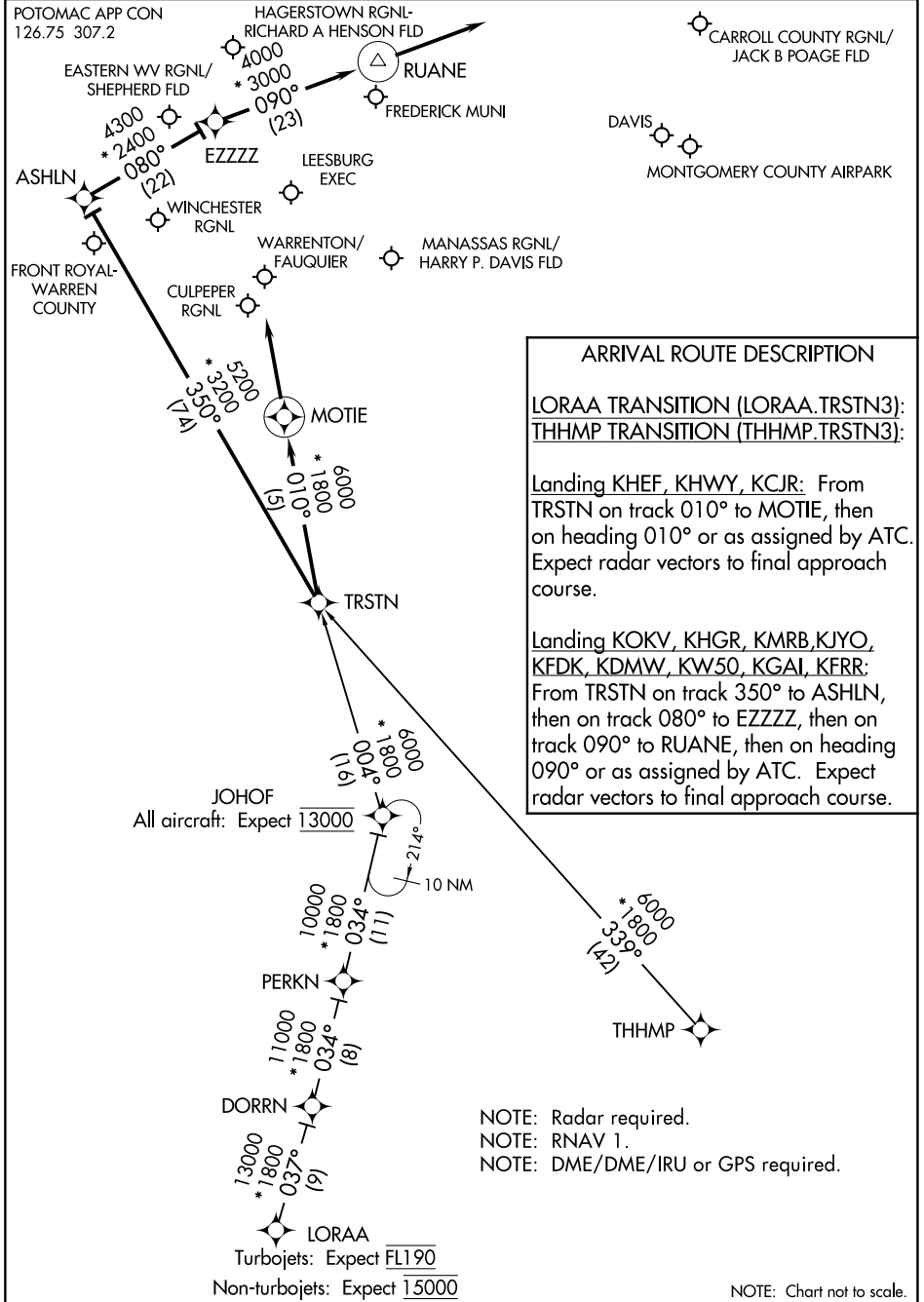
NE-3, 18 MAY 2023 to 15 JUN 2023

(TRSTN.TRSTN3) 22027

# TRSTN THREE ARRIVAL (RNAV)

AL-5326

WASHINGTON, D.C.



NE-3, 18 MAY 2023 to 15 JUN 2023

NE-3, 18 MAY 2023 to 15 JUN 2023

# TRSTN THREE ARRIVAL (RNAV)

(TRSTN.TRSTN3) 04FEB16

WASHINGTON, D.C.

Turbojets: Expect FL190  
Non-turbojets: Expect 15000

NOTE: Chart not to scale.