

WAAS CH 77538 W22A	APP CRS 224°	Rwy Idg TDZE Apt Elev	5500 276 276
--	------------------------	-----------------------------	---

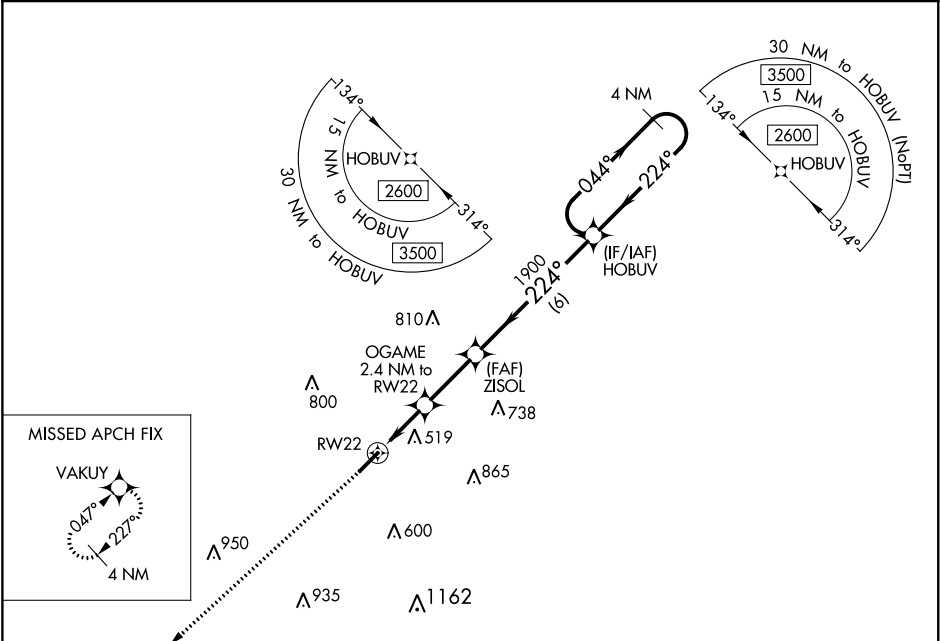
RNAV (GPS) RWY 22

CONWAY RGNL (CXW)

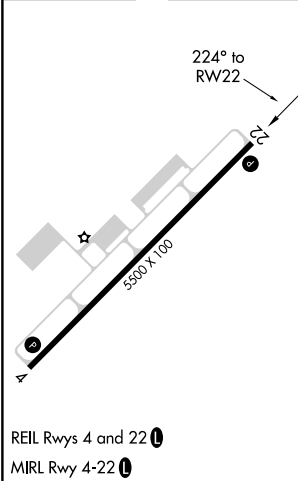
Baro-VNAV NA.
NA Use Bill and Hillary Clinton National/Adams Field altimeter setting; when not received, procedure NA.
 DME/DME RNP-0.3 NA.

MISSED APPROACH: Climb to 3000 direct VAKUY and hold.

AWOS-2 118.775	LITTLE ROCK APP CON 135.4 353.6 (040°-239°) 119.5 306.2 (240°-039°)	CLNC DEL 121.2	UNICOM 123.05 (CTAF) 1
--------------------------	---	--------------------------	---



ELEV 276	TDZE 276
----------	----------



3000	VAKUY	4 NM Holding Pattern
*LNAV only.	OGAME 2.4 NM to RW22	ZISOL 1900
RW22	*1080	1900
2.4 NM	2.6 NM	6 NM
HOBUV	044° → 2600	← 224°
	GP 3.00°	TCH 40
REIL Rws 4 and 22 1	MIRL Rwy 4-22 1	

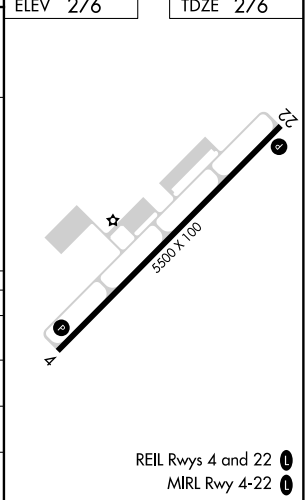
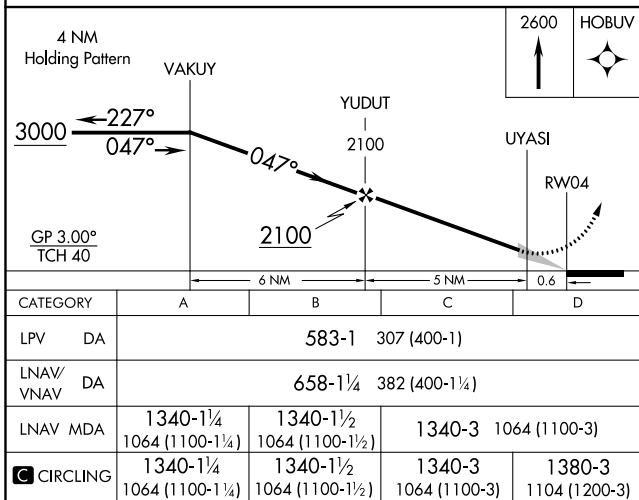
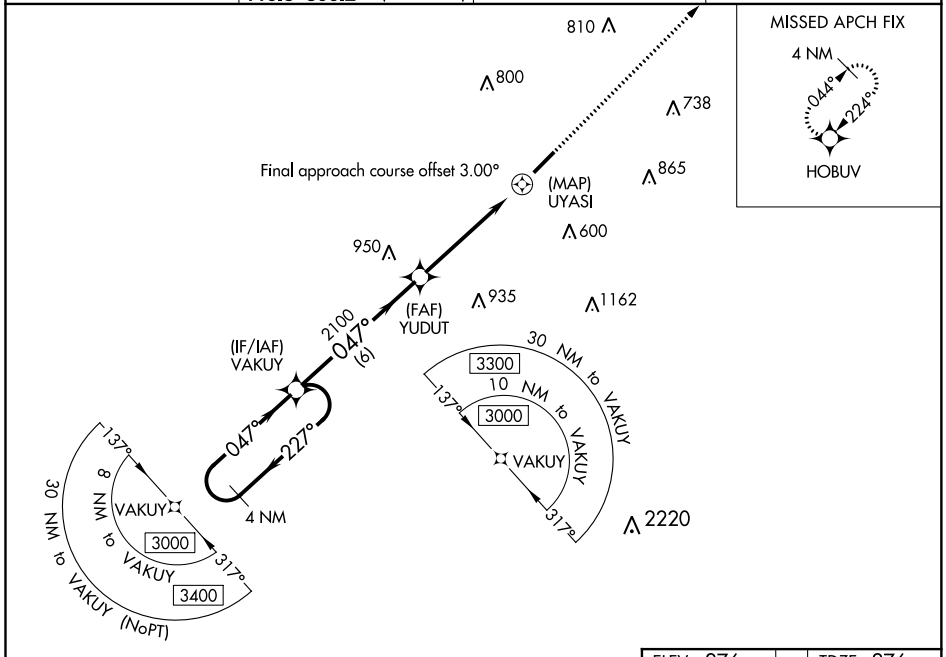
CATEGORY	A	B	C	D
LPV DA		533-7/8	257 (300-7/8)	
LNAV/VNAV DA		853-2	577 (600-2)	
LNAV MDA	780-1	504 (600-1)	780-1 3/8	504 (600-1 3/8)
C CIRCLING	1000-1	724 (800-1)	1000-2 724 (800-2)	1380-3 1104 (1200-3)

WAAS CH 97338 W04A	APP CRS 047°	Rwy Idg TDZE 276 Apt Elev 276	5500
--	------------------------	---	-------------

RNAV (GPS) RWY 4

CONWAY RGNL (CXW)

<p>▼ Baro-VNAV NA. Use Bill and Hillary Clinton National/Adams Field altimeter setting; when not received, procedure NA. DME/DME RNP-0.3 NA.</p>	<p>MISSED APPROACH: Climb to 2600 direct HOBUV and hold.</p>		
<p>AWOS-2 118.775</p>	<p>LITTLE ROCK APP CON 135.4 353.6 (040°-239°) 119.5 306.2 (240°-039°)</p>		<p>CLNC DEL 121.2</p>
			<p>UNICOM 123.05 (CTAF) 0</p>



SC-1, 30 DEC 2021 to 27 JAN 2022

SC-1, 30 DEC 2021 to 27 JAN 2022