

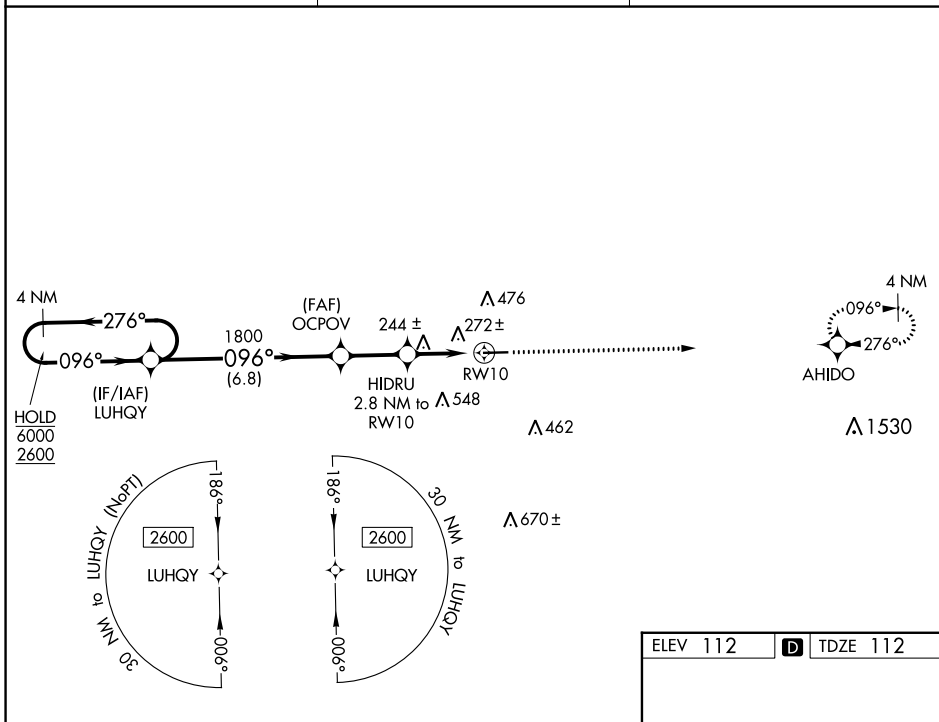
WAAS CH <b>45914</b> <b>W10A</b>	APP CRS <b>096°</b>	Rwy Idg TDZE Apt Elev	<b>5001</b> <b>112</b> <b>112</b>
--	------------------------	-----------------------------	---

# RNAV (GPS) RWY 10

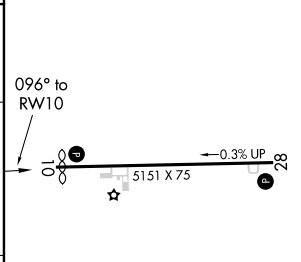
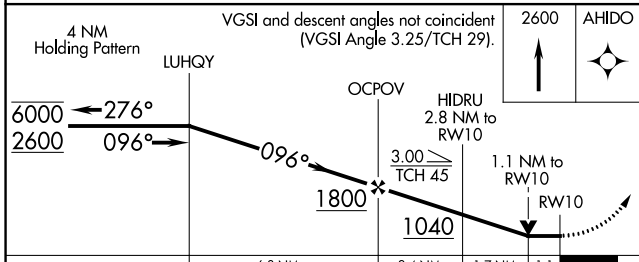
CLAXTON-EVANS COUNTY (C'WV)

RNP APCH GPS.	MISSED APPROACH: Climb to 2600 direct AHIDO and hold.
<p>▼ Straight-In Rwy 10 NA at night.</p> <p>▲ Rwy 10 helicopter visibility reduction below 1 SM NA.</p>	

AWOS-3 <b>120.075</b>	JACKSONVILLE CENTER <b>132.925 363.2</b>	UNICOM <b>122.8</b> (CTAF) <b>1</b>
--------------------------	---	--



ELEV 112	<b>D</b> TDZE 112
----------	-------------------



CATEGORY	A	B	C	D
LP MDA	500-1	388 (400-1)	500-1 $\frac{1}{8}$	388 (400-1 $\frac{1}{8}$ )
LNAV MDA	540-1	428 (500-1)	540-1 $\frac{1}{4}$	428 (500-1 $\frac{1}{4}$ )
<b>C</b> CIRCLING	580-1 468 (500-1)	780-1 668 (700-1)	860-2 $\frac{1}{4}$ 748 (800-2 $\frac{1}{4}$ )	860-2 $\frac{1}{2}$ 748 (800-2 $\frac{1}{2}$ )

MIRL Rwy 10-28 **1**  
REIL Rwys 10 and 28 **1**

SE-4, 22 FEB 2024 to 21 MAR 2024

SE-4, 22 FEB 2024 to 21 MAR 2024

WAAS CH <b>87114</b> <b>W28A</b>	APP CRS <b>276°</b>	Rwy Idg TDZE Apt Elev	<b>5151</b> <b>110</b> <b>112</b>
--	------------------------	-----------------------------	---

# RNAV (GPS) RWY 28

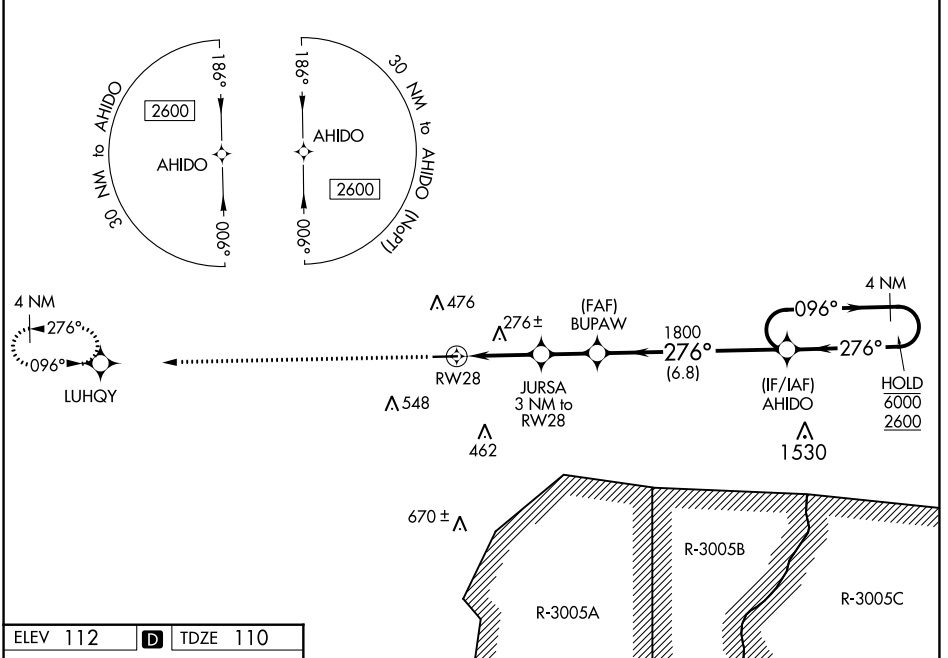
CLAXTON-EVANS COUNTY (C'WV)

RNP APCH GPS.

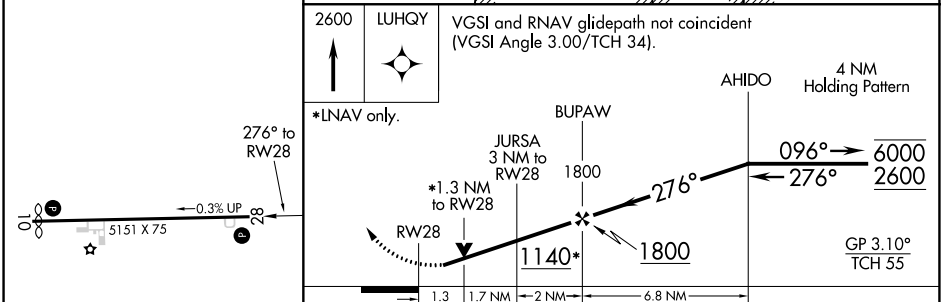
**▼** Rwy 28 helicopter visibility reduction below 3/4 SM NA. For uncompensated Baro-VNAV systems, LNAV/VNAV NA below -15°C or above 54°C. Circling Rwy 10 NA at night.

**▲** MISSED APPROACH: Climb to 2600 direct LUHQY and hold.

AWOS-3 <b>120.075</b>	JACKSONVILLE CENTER <b>132.925 363.2</b>	UNICOM <b>122.8 (CTAF) 0</b>
--------------------------	---	---------------------------------



ELEV 112	<b>D</b>	TDZE 110
----------	----------	----------



2600 LUHQY	VGSi and RNAV glidepath not coincident (VGSi Angle 3.00/TCH 34).			
↑	*LNAV only.			
◆	AHIDO 4 NM Holding Pattern			
	BUPAW	JURSA	AHIDO	
	1800	3 NM to RW28	276°	096° → 6000
	1140*	1.3 NM to RW28	← 276°	2600
	1.3	1.7 NM	2 NM	6.8 NM
	GP 3.10° TCH 55			

CATEGORY	A	B	C	D
LPV DA		386-1	276 (300-1)	
LNAV/VNAV DA		403-1	293 (300-1)	
LNAV MDA	540-1	430 (500-1)	540-1¼	430 (500-1¼)
<b>C</b> CIRCLING	580-1 468 (500-1)	780-1 668 (700-1)	860-2¼ 748 (800-1¼)	860-2½ 748 (800-2½)

SE-4, 22 FEB 2024 to 21 MAR 2024

SE-4, 22 FEB 2024 to 21 MAR 2024