

LOC/DME I-VVM 110.9 Chan 46	APP CRS 249°	Rwy Idg 5500 TDZE 689 Apt Elev 689
---	------------------------	---

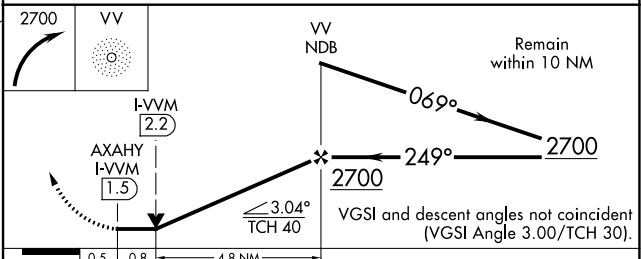
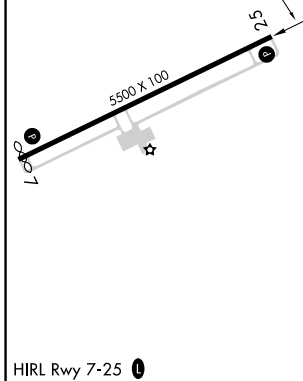
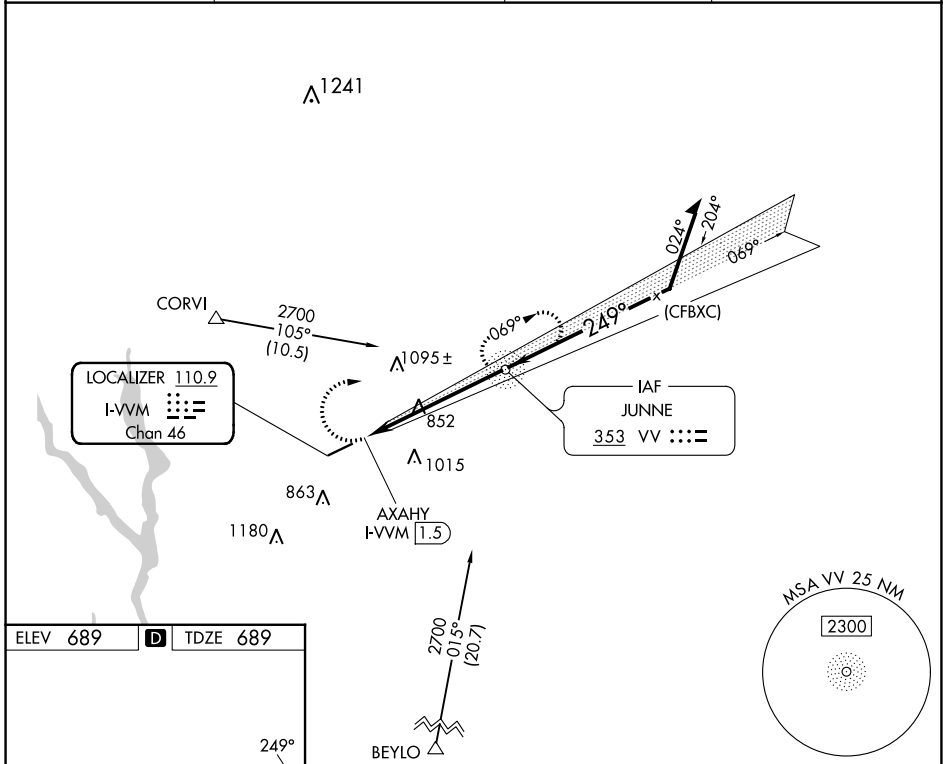
LOC RWY 25
GREENE COUNTY RGNL (CPP)

ADF or DME required for procedure entry. ADF required.

▽ Rwy 25 helicopter visibility reduction below ¾ SM NA.
△ NA Localizer unusable ½ mile inbound.

MISSED APPROACH: Climbing right turn to 2700 direct VV NDB and hold, continue climb-in-hold to 2700.

AWOS-3 124.525	ATLANTA APP CON ★ 132.475 291.1	GCO 121.725	UNICOM 122.8(CTAF) 0
--------------------------	---	-----------------------	--------------------------------



CATEGORY	A	B	C	D
S-LOC 25	1120-1	431 (500-1)	1120-1¼	431 (500-1¼)
C CIRCLING	1220-1	531 (600-1)	1320-1¾ 631 (700-1¾)	1480-2½ 791 (800-2½)

SE-4, 22 FEB 2024 to 21 MAR 2024

SE-4, 22 FEB 2024 to 21 MAR 2024

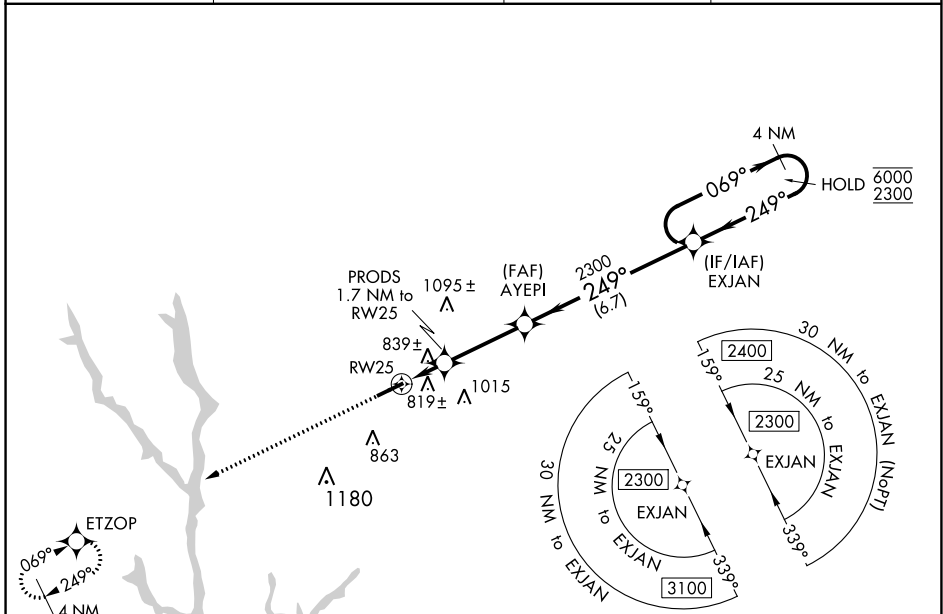
WAAS CH 70616 W25A	APP CRS 249°	Rwy Idg 5500
		TDZE 689
		Apt Elev 689

RNAV (GPS) RWY 25

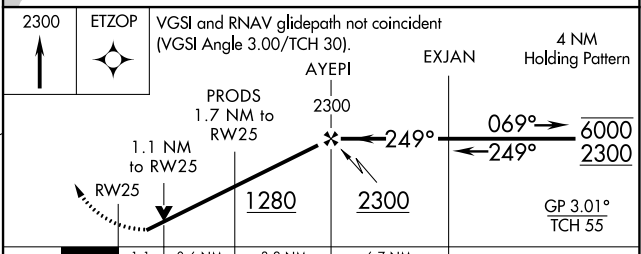
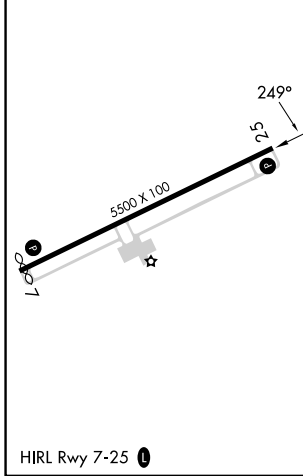
GREENE COUNTY RGNL (CPP)

RNP APCH - GPS.		MISSED APPROACH: Climb to 2300 direct ETZOP and hold.
<p>▼ Rwy 25 helicopter visibility reduction below 3/4 SM NA.</p> <p>▲ For uncompensated Baro-VNAV systems, LNAV/VNAV NA below -16°C or above 54°C.</p>		

AWOS-3 124.525	ATLANTA APP CON * 132.475 291.1	GCO 121.725	UNICOM 122.8(CTAF)
--------------------------	---	-----------------------	------------------------------



ELEV 689	D	TDZE 689
----------	----------	----------



CATEGORY	A	B	C	D
LPV DA		981-7/8	292 (300-7/8)	
LNAV/VNAV DA		1065-1	376 (400-1)	
LNAV MDA	1080-1	391 (400-1)	1080-1 1/8	391 (400-1 1/8)
C CIRCLING	1140-1 451 (500-1)	1180-1 491 (500-1)	1320-1 3/4 631 (700-1 3/4)	1480-2 1/2 791 (800-2 1/2)

SE-4, 22 FEB 2024 to 21 MAR 2024

SE-4, 22 FEB 2024 to 21 MAR 2024

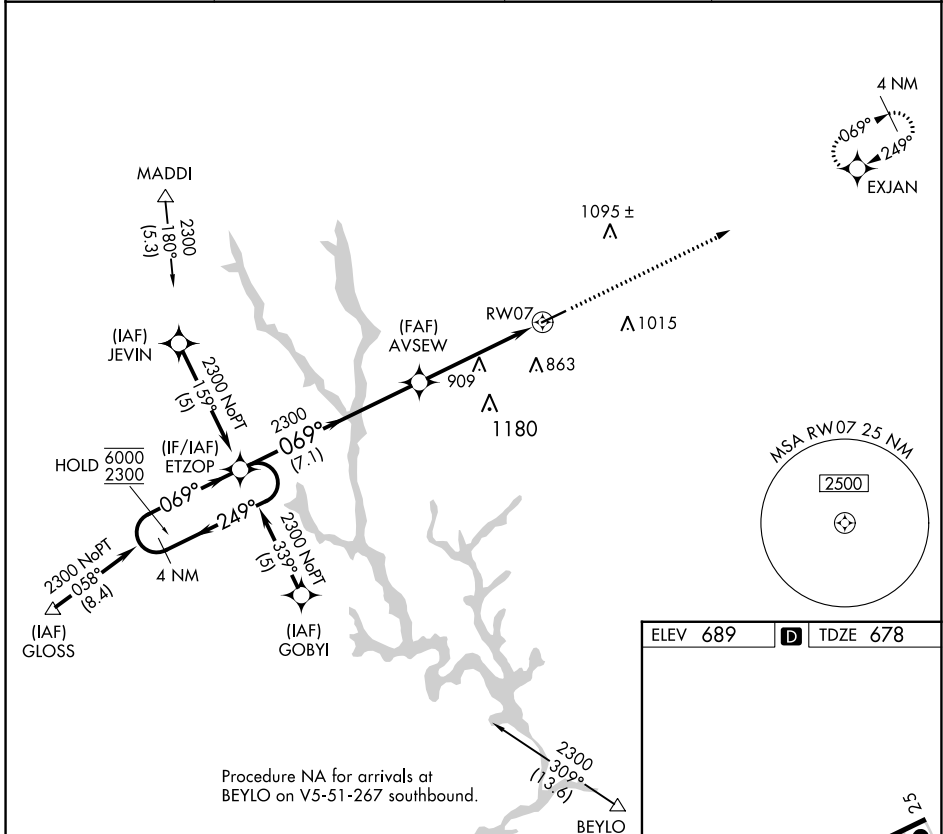
APP CRS	Rwy Idg	5401
069°	TDZE	678
	Apt Elev	689

RNAV (GPS) RWY 7

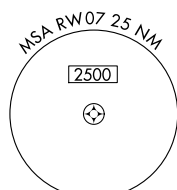
GREENE COUNTY RGNL (CPP)

RNP APCH - GPS.		MISSED APPROACH: Climb to 2300 direct EXJAN and hold.
Rwy 7 helicopter visibility reduction below 3/4 SM NA.		

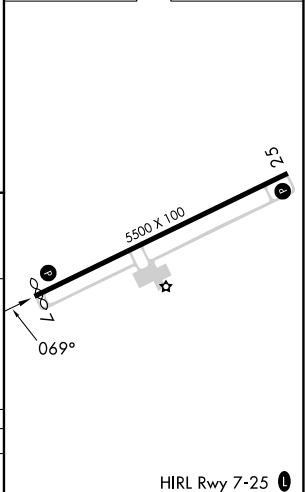
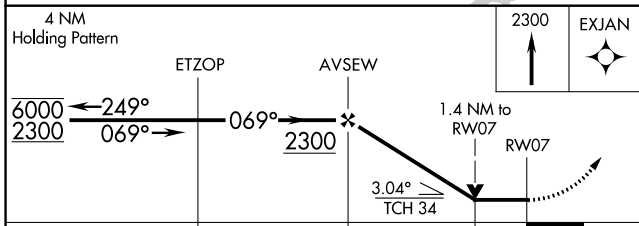
AWOS-3 124.525	ATLANTA APP CON * 132.475 291.1	GCO 121.725	UNICOM 122.8(CTAF) 0
--------------------------	---	-----------------------	--------------------------------



Procedure NA for arrivals at BEYLO on V5-51-267 southbound.



ELEV 689	D TDZE 678
----------	-------------------



CATEGORY	A	B	C	D
LNAV MDA	1160-1	482 (500-1)	1160-1 3/8	482 (500-1 3/8)

HIRL Rwy 7-25 0

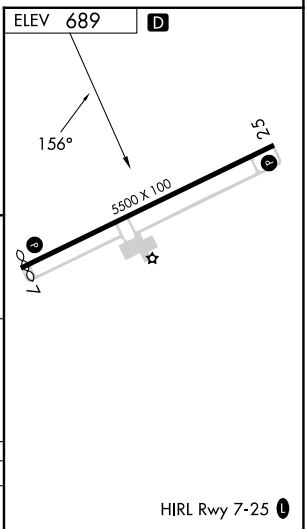
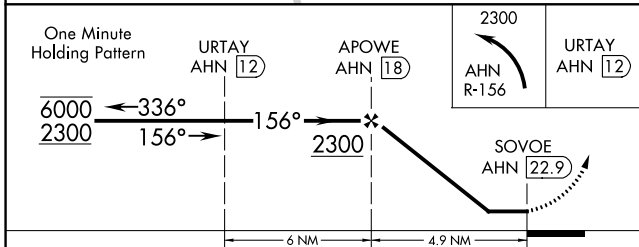
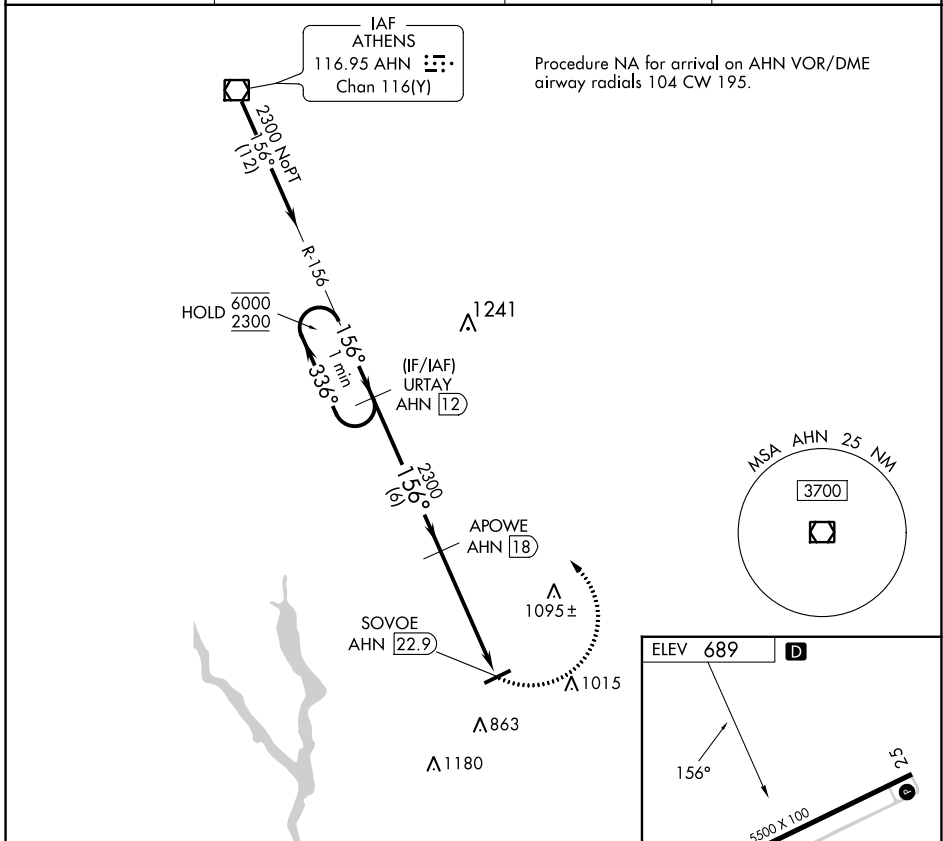
SE-4, 22 FEB 2024 to 21 MAR 2024

SE-4, 22 FEB 2024 to 21 MAR 2024

VOR/DME AHN 116.95 Chan 116 (Y)	APP CRS 156°	Rwy Idg TDZE Apt Elev	N/A N/A 689
---	------------------------	-----------------------------	--

VOR-B
GREENE COUNTY RGNL (CPP)

DME Required.		MISSED APPROACH: Climbing left turn to 2300 on AHN VOR/DME R-156 to URTAY/AHN 12 DME and hold.	
AWOS-3 124.525	ATLANTA APP CON * 132.475 291.1	GCO 121.725	UNICOM 122.8 (CTAF) ①



CATEGORY	A	B	C	D
① CIRCLING	1240-1	551 (600-1)	1320-1¾ 631 (700-1¾)	1480-2½ 791 (800-2½)

SE-4, 22 FEB 2024 to 21 MAR 2024

SE-4, 22 FEB 2024 to 21 MAR 2024