

LOC I-CPF <b>109.35</b>	APP CRS <b>145°</b>	Rwy Idg <b>5499</b> TDZE <b>1243</b> Apt Elev <b>1256</b>
----------------------------	------------------------	---

# LOC RWY 14

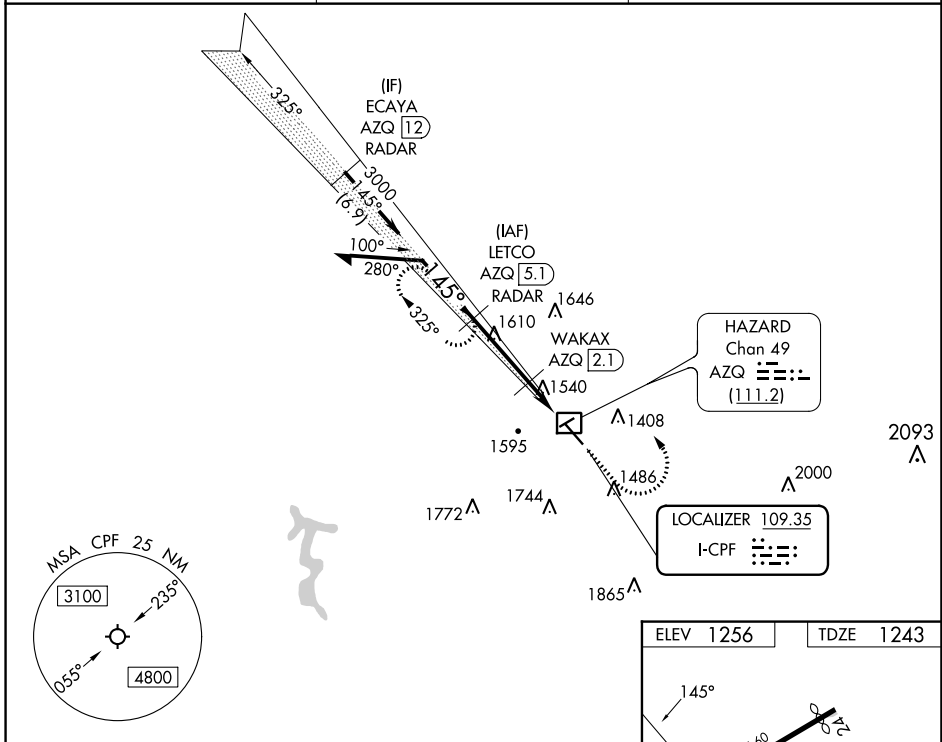
WENDELL H FORD (CPF)

DME required. RADAR required for procedure entry.  
RADAR required for missed approach.

⚠ Circling Rwy 24, 32 NA at night. Simultaneous reception of I-CPF and AZQ DME required. Rwy 14 helicopter visibility reduction below 3/4 SM NA.  
DME from AZQ DME.

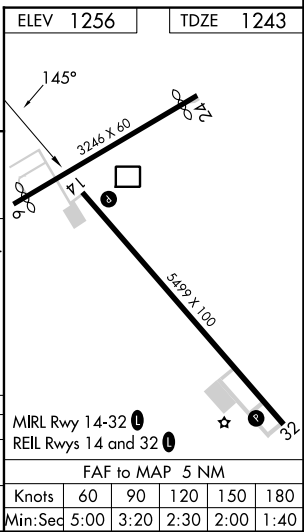
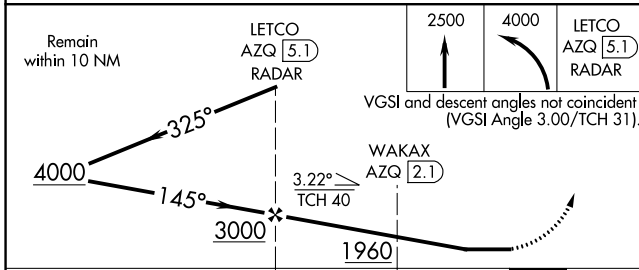
MISSED APPROACH: Climb to 2500 then climbing left turn to 4000 to LETCO/AZQ 5.1 DME/RADAR and hold, continue climb-in-hold to 4000.

AWOS-3 <b>119.025</b>	INDIANAPOLIS CENTER <b>126.575 257.85</b>	UNICOM <b>122.7 (CTAF) 0</b>
--------------------------	--	---------------------------------



SE-1, 22 FEB 2024 to 21 MAR 2024

SE-1, 22 FEB 2024 to 21 MAR 2024



ELEV 1256		TDZE 1243	
CATEGORY	A	B	C
S-LOC 14	1800-1	557 (600-1)	1800-1 1/2 557 (600-1 1/2)
CIRCLING	2000-1 744 (800-1)	2040-1 784 (800-1)	2060-2 1/4 804 (900-2 1/4)
			2140-3 884 (900-3)
MIRL Rwy 14-32 0			
REIL Rws 14 and 32 0			
FAF to MAP 5 NM			
Knots	60	90	120 150 180
Min:Seq	5:00	3:20	2:30 2:00 1:40

WAAS CH <b>69323</b> <b>W14A</b>	APP CRS <b>145°</b>	Rwy Idg TDZE Apt Elev	<b>5499</b> <b>1243</b> <b>1256</b>
--	------------------------	-----------------------------	---

# RNAV (GPS) RWY 14

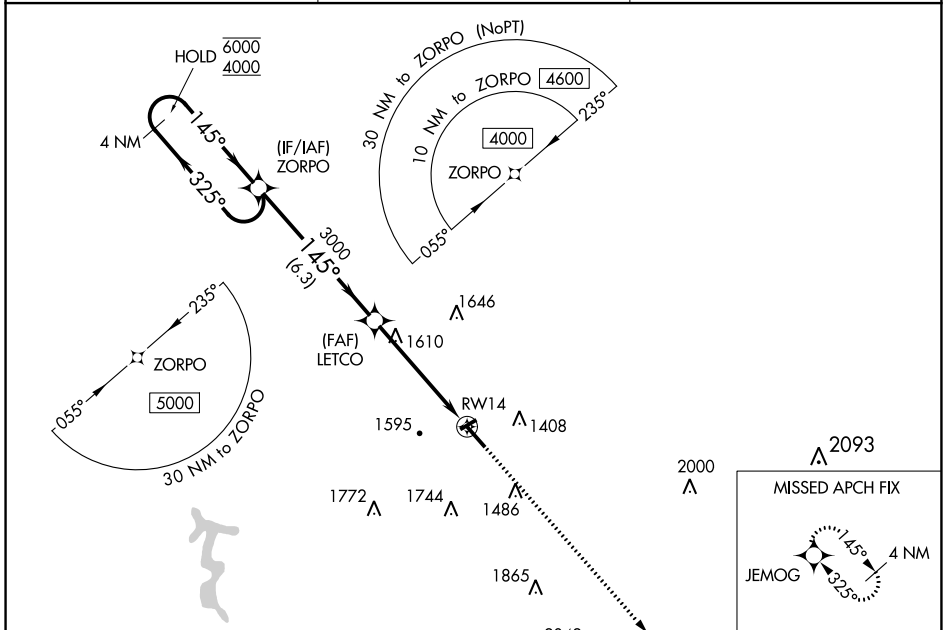
WENDELL H FORD (CPF)

RNP APCH-GPS.

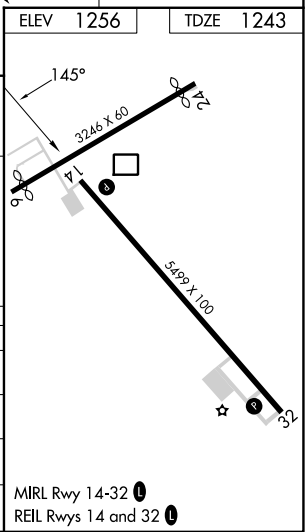
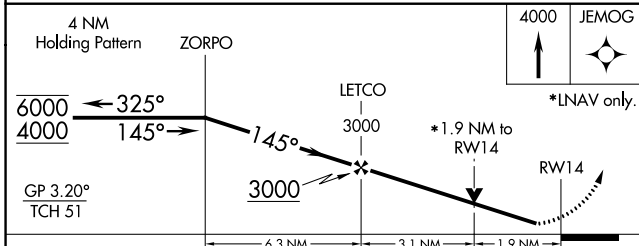
**⚠** Circling Rwy 24, 32 NA at night. For uncompensated Baro-VNAV systems, LNAV/VNAV NA below -17°C or above 54°C. Rwy 14 helicopter visibility reduction below ¾ SM NA.

MISSED APPROACH: Climb to 4000 direct JEMOG and hold.

AWOS-3 <b>119.025</b>	INDIANAPOLIS CENTER <b>126.575 257.85</b>	UNICOM <b>122.7 (CTAF) 0</b>
--------------------------	--	---------------------------------



ELEV 1256	TDZE 1243
-----------	-----------



CATEGORY	A	B	C	D
LPV DA	1443-¾	200 (200-¾)	1493-¾ 250 (300-¾)	NA
LNAV/VNAV DA	1858-2 615 (700-2)		NA	
LNAV MDA	1880-1	637 (700-1)	1880-1¾	637 (700-1¾)
<b>C</b> CIRCLING	2000-1 744 (800-1)	2060-1¼ 804 (900-1¼)	2060-2¼ 804 (900-2¼)	2140-3 884 (900-3)

MIRL Rwy 14-32 0  
REIL Rws 14 and 32 0

SE-1, 22 FEB 2024 to 21 MAR 2024

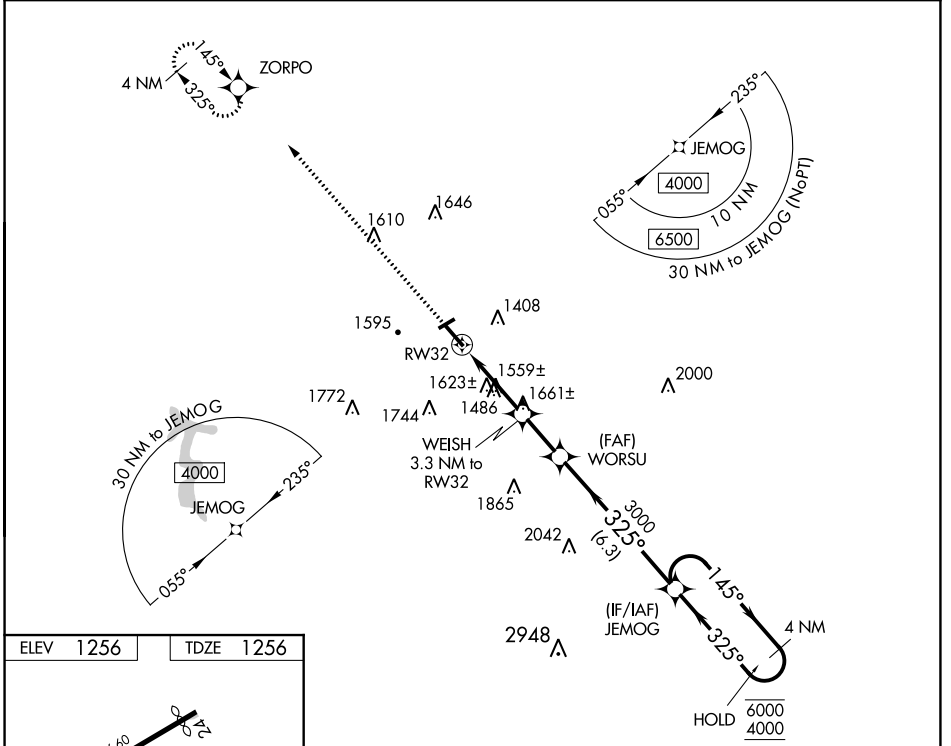
SE-1, 22 FEB 2024 to 21 MAR 2024

WAAS CH <b>56423</b> <b>W32A</b>	APP CRS <b>325°</b>	Rwy Idg TDZE Apt Elev	<b>5499</b> <b>1256</b> <b>1256</b>
--	------------------------	-----------------------------	---

# RNAV (GPS) RWY 32

WENDELL H FORD (CPF)

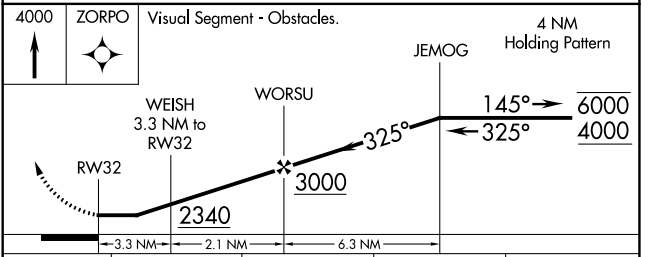
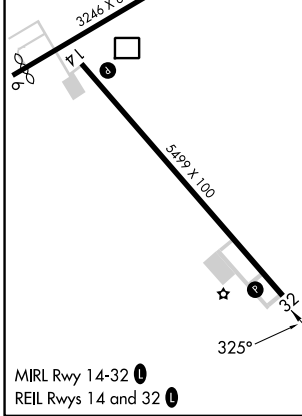
RNP APCH.	<p><b>⚠</b> Circling Rwy 24, 32 NA at night. Rwy 32 helicopter visibility reduction below 1 SM NA.</p> <p><b>⚠</b> Straight-in Rwy 32 NA at night.</p>	MISSED APPROACH: Climb to 4000 direct ZORPO and hold.
AWOS-3 <b>119.025</b>	INDIANAPOLIS CENTER <b>126.575 257.85</b>	UNICOM <b>122.7 (CTAF) 0</b>



SE-1, 22 FEB 2024 to 21 MAR 2024

SE-1, 22 FEB 2024 to 21 MAR 2024

ELEV 1256	TDZE 1256
-----------	-----------



CATEGORY	A	B	C	D
LP MDA	1820-1	564 (600-1)	1820-1½	564 (600-1½)
LNAV MDA	1880-1	624 (700-1)	1880-1¾	624 (700-1¾)
<b>C</b> CIRCLING	2000-1 744 (800-1)	2040-1 784 (800-1)	2060-2¼ 804 (900-2¼)	2140-3 884 (900-3)