


LOC/DME I-LPI 109.1 Chan 28	APP CRS 172°	Rwy Idg 13500 TDZE 6187 Apt Elev 6187
---	------------------------	--

ILS RWY 17L (SA CAT I & II)

CITY OF COLORADO SPRINGS MUNI (COS)

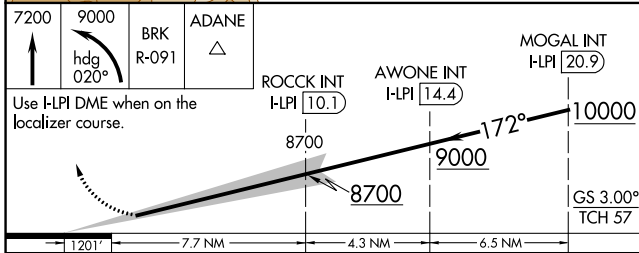
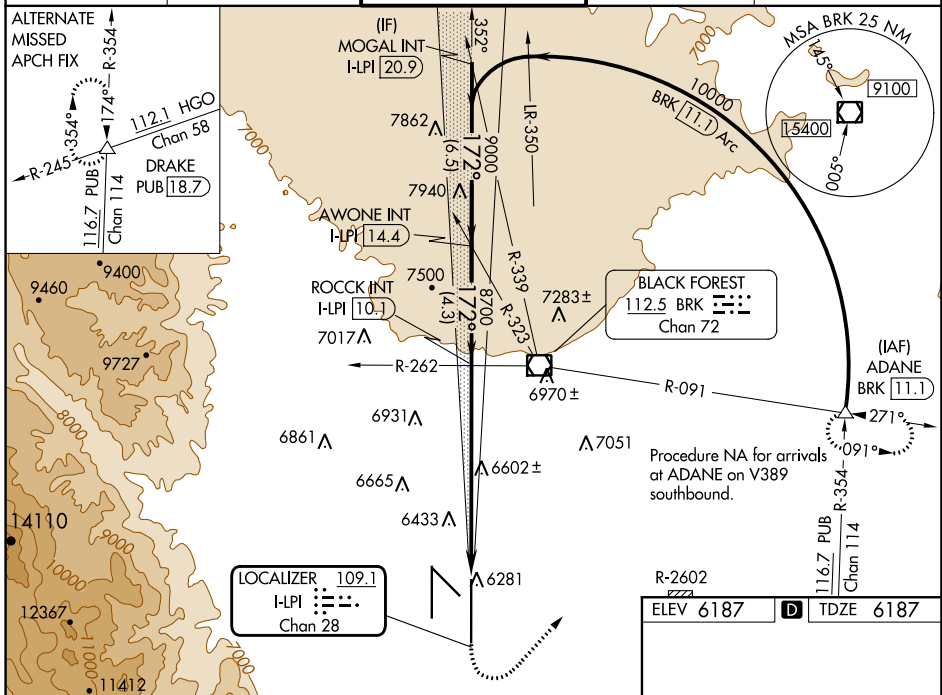
DME or RADAR required for procedure entry.

⚠ Simultaneous approach authorized with Rwy 17R.
⚠ SA CAT I: Required specific OPSPEC, MSPEC, or LOA approval and use of HUD to DH. SA CAT II: Reduced Lighting: Requires specific OPSPEC, MSPEC, or LOA approval and use of autoland or HUD to touchdown.

MALS 

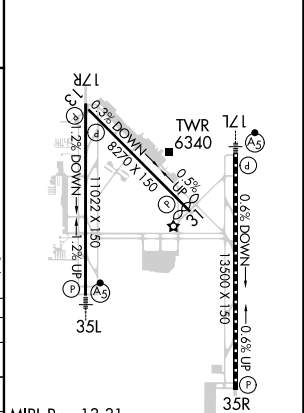
MISSED APPROACH: Climb to 7200 then climbing left turn to 9000 on heading 020° and on BRK VOR/DME R-091 to ADANE INT/BRK VOR/DME 11.1 DME and hold.

ATIS 125.0 254.3	SPRINGS APP CON 124.0 257.875	SPRINGS TOWER 119.9 360.6	GND CON 121.7 348.6	CLNC DEL 134.45 363.125
----------------------------	---	-------------------------------------	-------------------------------	-----------------------------------



CATEGORY	A	B	C	D
S-ILS 17L	SA CAT I RA 169/14 150 DA 6337			
S-ILS 17L	SA CAT II RA 105/16 100 DA 6287			

ELEV 6187	D TDZE 6187
-----------	--------------------



SA CATEGORY I & II ILS SPECIAL AIRCREW & AIRCRAFT CERTIFICATION REQUIRED

MIRL Rwy 13-31
 HIRL Rws 17R-35L and 17L-35R
 REIL Rws 13, 17R, 31 and 35R
 TDZ/CL Rws 17L and 35R

SW-1, 22 FEB 2024 to 21 MAR 2024

SW-1, 22 FEB 2024 to 21 MAR 2024

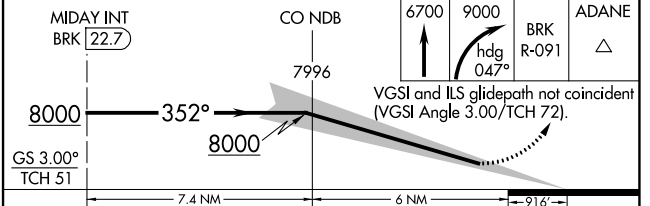
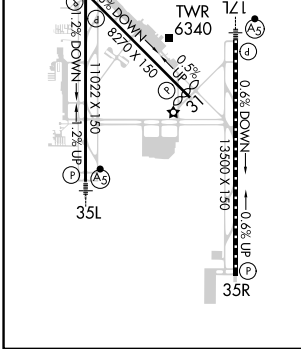
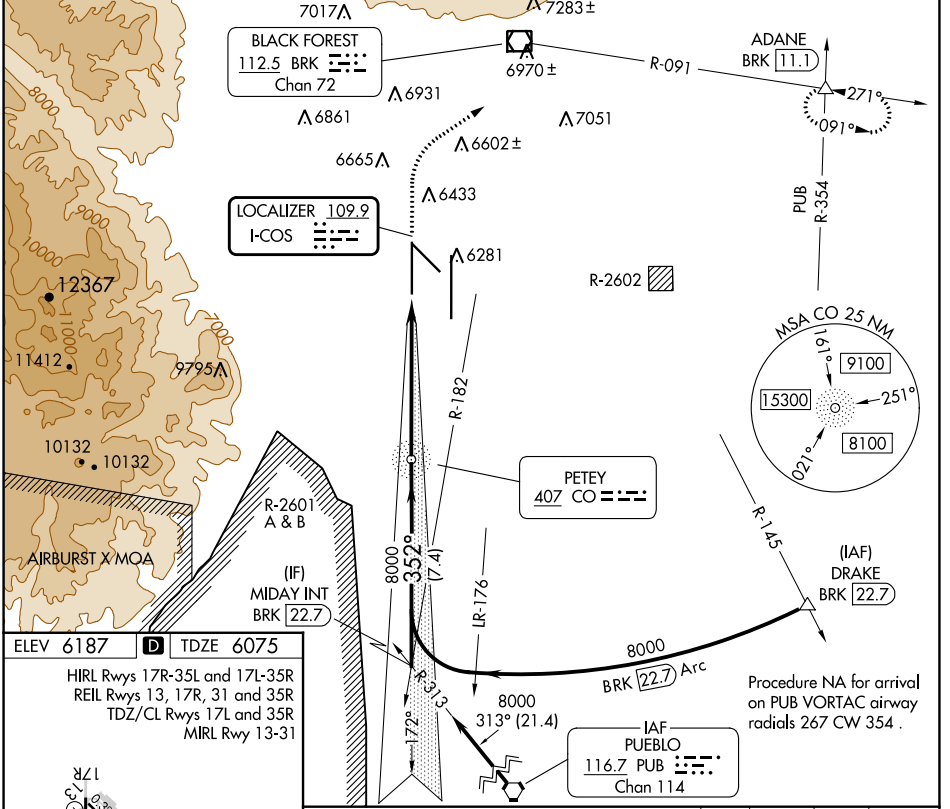
LOC I-COS 109.9	APP CRS 352°	Rwy Idg 11022
		TDZE 6075
		Apt Elev 6187

ILS RWY 35L (SA CAT II)

CITY OF COLORADO SPRINGS MUNI (COS)

<p>RADAR monitoring required when R-2601 in use. Requires specific OPSPEC, MSPEC, or LOA approval.</p>	<p>MALSR</p>	<p>MISSED APPROACH: Climb to 6700 then climbing right turn to 9000 on heading 047° and BRK VOR/DME R-091 to ADANE INT/BRK 11.1 DME and hold.</p>

ATIS 125.0 254.3	SPRINGS APP CON 124.0 257.875	SPRINGS TOWER 119.9 360.6	GND CON 121.7 348.6	CLNC DEL 134.45 363.125
----------------------------	---	-------------------------------------	-------------------------------	-----------------------------------



MIDAY INT BRK 22.7	CO NDB	7996	ADANE	
8000	352°	8000		
GS 3.00°	TCH 51	7.4 NM	6 NM	
CATEGORY	A	B	C	D
S-ILS 35L	RA 123/12 100 DA 6175			
SA CATEGORY II ILS - SPECIAL AIRCREW & AIRCRAFT CERTIFICATION REQUIRED				

SW-1, 22 FEB 2024 to 21 MAR 2024

SW-1, 22 FEB 2024 to 21 MAR 2024

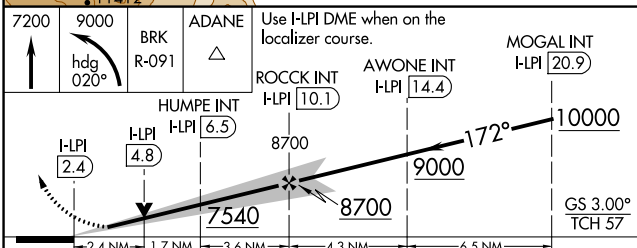
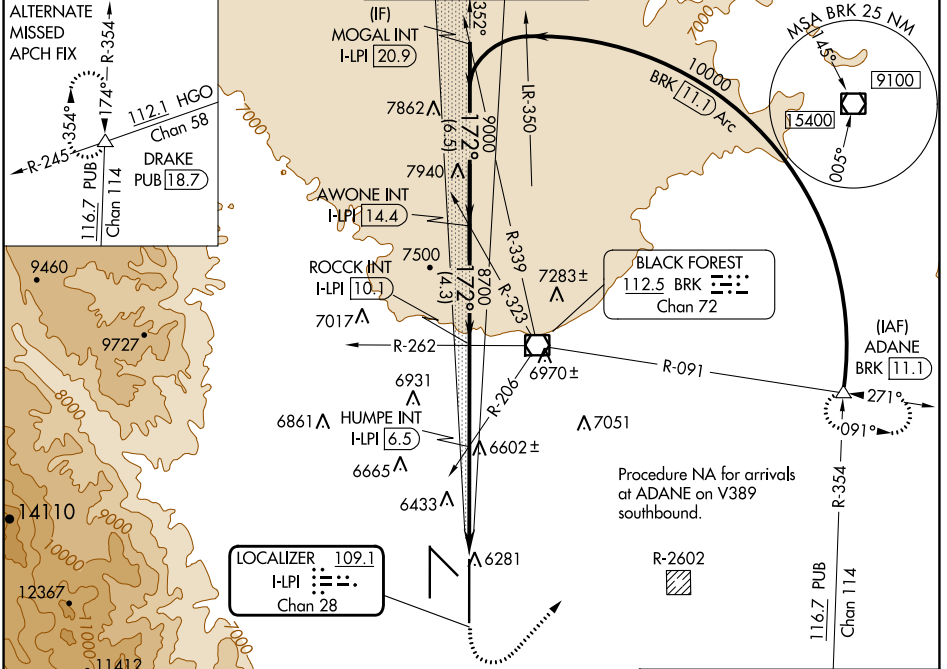
LOC/DME I-LPI 109.1 Chan 28	APP CRS 172°	Rwy Idg 13500 TDZE 6187 Apt Elev 6187
--	------------------------	--

ILS or LOC RWY 17L

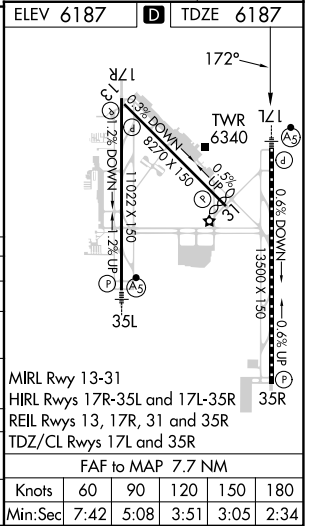
CITY OF COLORADO SPRINGS MUNI (COS)

DME or RADAR required for procedure entry.	MALS R	MISSED APPROACH: Climb to 7200 then climbing left turn to 9000 on heading 020° and on BRK VOR/DME R-091 to ADANE INT/BRK VOR/DME 11.1 DME and hold.
Simultaneous approach authorized with Rwy 17R.		

ATS 125.0 254.3	SPRINGS APP CON 124.0 257.875	SPRINGS TOWER 119.9 360.6	GND CON 121.7 348.6	CLNC DEL 134.45 363.125
---------------------------	---	-------------------------------------	-------------------------------	-----------------------------------



ELEV 6187	TDZE 6187
Use I-LPI DME when on the localizer course.	
MOGAL INT I-LPI [20.9]	
AWONE INT I-LPI [14.4]	
ROCK INT I-LPI [10.1]	
HUMPE INT I-LPI [6.5]	
ADANE BRK R-091	
GS 3.00°	TCH 57
CATEGORY	A B C D
S-ILS 17L	6387/18 200 (200-½)
S-LOC 17L	7540/40 1353 (1400-¾) 7540/55 1353 (1400-1) 7540-3 1353 (1400-3)
CIRCLING	7540-1¼ 1353 (1400-1¼) 7540-1½ 1353 (1400-1½) 7540-3 1353 (1400-3)
HUMPE FIX MINIMUMS (DUAL VOR RECEIVERS OR DME REQUIRED)	
S-LOC 17L	7020/24 833 (900-½) 7020/40 833 (900-¾) 7020-1⅞ 833 (900-1⅞)
CIRCLING	7020-1¼ 833 (900-1¼) 7040-2½ 853 (900-2½) 7260-3 1073 (1100-3)



SW-1, 22 FEB 2024 to 21 MAR 2024

SW-1, 22 FEB 2024 to 21 MAR 2024


LOC I-COS 109.9	APP CRS 352°	Rwy ldg TDZE Apt Elev	11022 6075 6187
---------------------------	------------------------	-----------------------------	--

ILS or LOC RWY 35L

CITY OF COLORADO SPRINGS MUNI (COS)

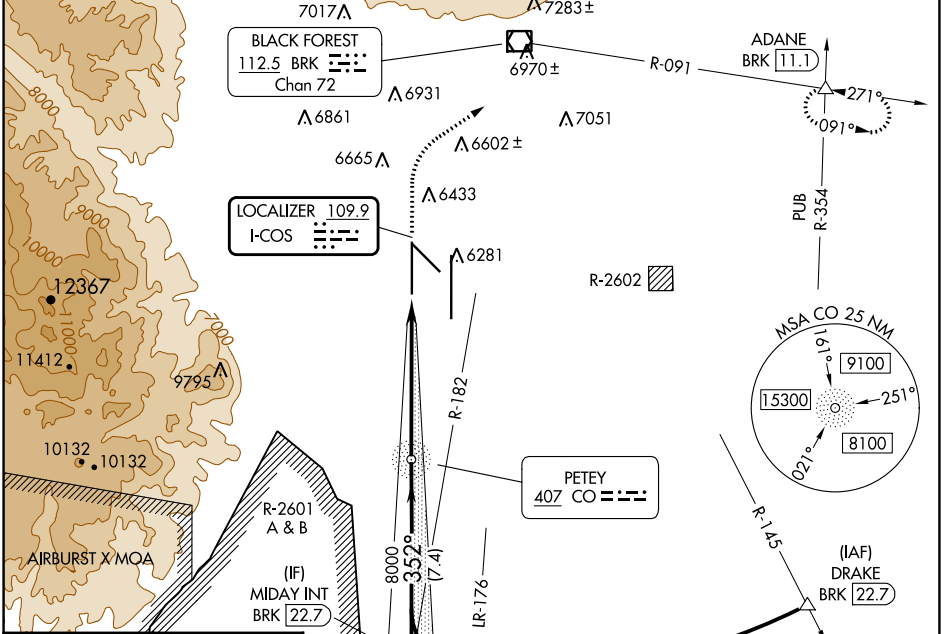
ADF required for LOC only.

⚠ RADAR monitoring required when R-2601 in use. For inop ALS, increase S-LOC 35L Cat C/D visibility to RVR 4500.
*RVR 1800 authorized with use of FD or AP or HUD to DA.

MALSR 

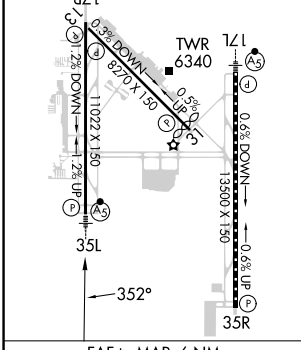
MISSED APPROACH: Climb to 6700 then climbing right turn to 9000 on heading 047° and BRK VOR/DME R-091 to ADANE INT/BRK 11.1 DME and hold.

ATIS 125.0 254.3	SPRINGS APP CON 124.0 257.875	SPRINGS TOWER 119.9 360.6	GND CON 121.7 348.6	CLNC DEL 134.45 363.125
----------------------------	---	-------------------------------------	-------------------------------	-----------------------------------



ELEV 6187	D	TDZE 6075
-----------	----------	-----------

HIRL Rwy 17R-35L and 17L-35R
REIL Rwy 13, 17R, 31 and 35R
TDZ/CL Rwy 17L and 35R
MIRL Rwy 13-31

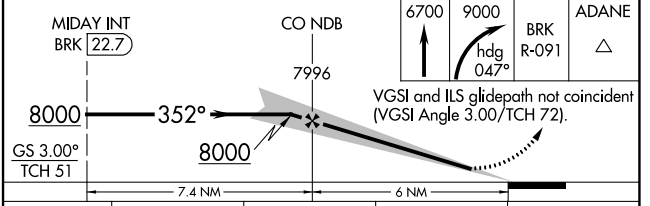


Procedure NA for arrival on PUB VORTAC airway radials 267 CW 354.

IAF PUEBLO 116.7 PUB Chan 114

IR-176, R-182, R-2602, R-145, R-091, PUB R-354, ADANE BRK [11.1]

MSA CO 25 NM: 9100, 15300, 8100



MIDAY INT BRK [22.7]	CO NDB 7996	6700	9000	BRK R-091	ADANE
GS 3.00°	8000	352°	8000	7996	VGSI and ILS glidepath not coincident (VGSI Angle 3.00/TCH 72).
TCH 51	7.4 NM		6 NM		
CATEGORY	A	B	C	D	
S-ILS 35L*		6275/24	200 (100-½)		
S-LOC 35L		6340/24	265 (200-½)		
C CIRCLING	6740-1 553 (600-1)	6760-1 573 (600-1)	6980-2¼ 793 (800-2¼)	7240-3 1053 (1100-3)	

SW-1, 22 FEB 2024 to 21 MAR 2024

SW-1, 22 FEB 2024 to 21 MAR 2024

LOC/DME I-AHI 109.1 Chan 28	APP CRS 352°	Rwy Idg TDZE Apt Elev 13500 6118 6187
--	------------------------	---

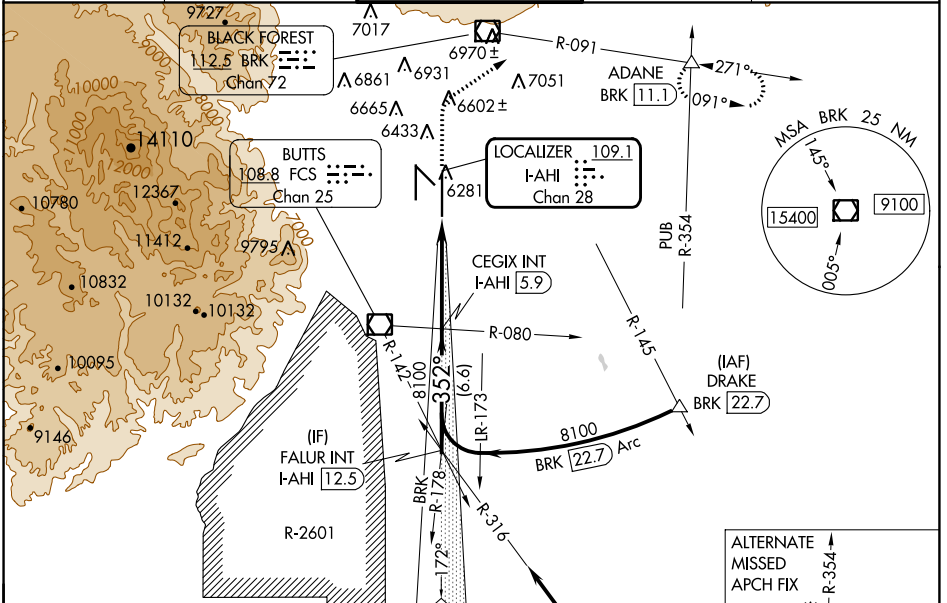
ILS or LOC RWY 35R

CITY OF COLORADO SPRINGS MUNI (COS)

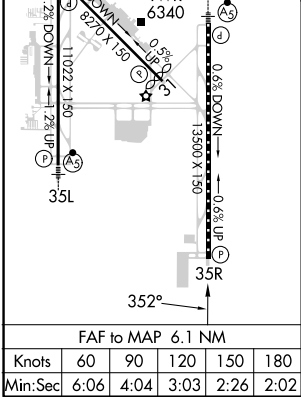
⚠ RADAR required when R-2601 in use.

⚠ MISSED APPROACH: Climb to 6700 then climbing right turn to 9000 on heading 047° and on BRK VOR/DME R-091 to ADANE INT/BRK 11.1 DME and hold.

ATIS 125.0 254.3	SPRINGS APP CON 124.0 257.875	SPRINGS TOWER 119.9 360.6	GND CON 121.7 348.6	CLNC DEL 134.45 363.125
----------------------------	---	-------------------------------------	-------------------------------	-----------------------------------



ELEV 6187	D TDZE 6118
MIRL Rwy 13-31	
HIRL Rwys 17R-35L and 17L-35R	
REIL Rwys 13, 17R, 31 and 35R	
TDZ/CL Rwy 17L and 35R	



VGSI and ILS glidepath not coincident (VGSI Angle 3.00/TCH 71).	6700	9000	ADANE
IFALUR INT I-AHI 12.5	CEGIX INT I-AHI 5.9	BRK R-091	△
8100	8100	I-AHI DME ANTENNA	*LOC only
GS 3.00° TCH 55	Use I-AHI DME when on the localizer course.		
CATEGORY	A	B	C
S-ILS 35R	6318/40 200 (200-¾)		
S-LOC 35R	6420/55	302 (300-1)	6420/45 302 (300-¾)
C CIRCLING	6740-1 553 (600-1)	6800-1 613 (700-1)	7040-2½ 853 (900-2½) 7260-3 1073 (1100-3)

SW-1, 22 FEB 2024 to 21 MAR 2024

SW-1, 22 FEB 2024 to 21 MAR 2024

NDB RWY 35L

CITY OF COLORADO SPRINGS MUNI (COS)

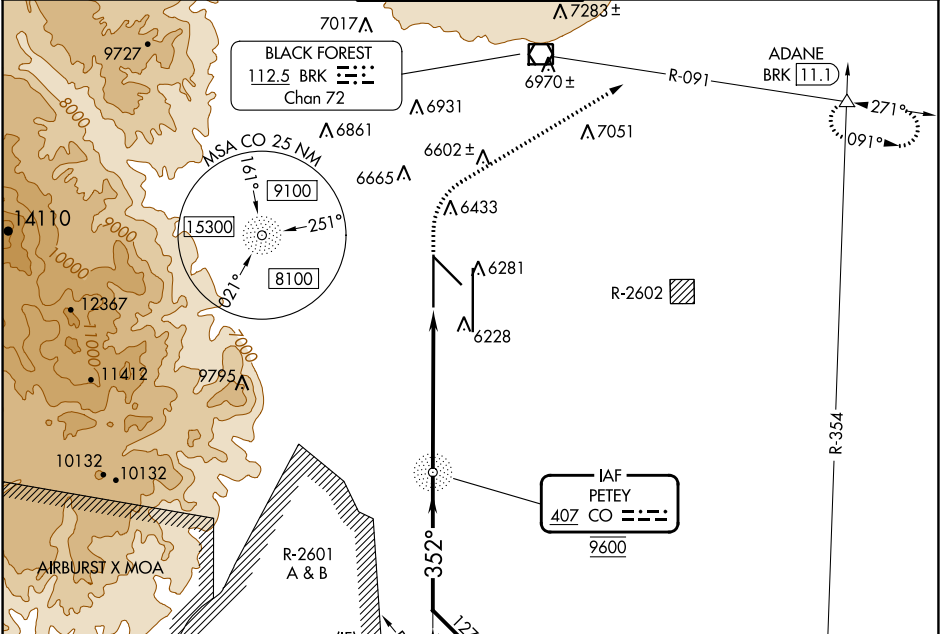
CO NDB 407	APP CRS 352°	Rwy ldg TDZE Apt Elev	11022 6075 6187
----------------------	------------------------	-----------------------------	--

▼ RADAR monitoring required when R-2601 in use.
▲ For inop ALS, increase S-35L Cat A/B visibility RVR 5500, and Cat C/D to 1½ SM.

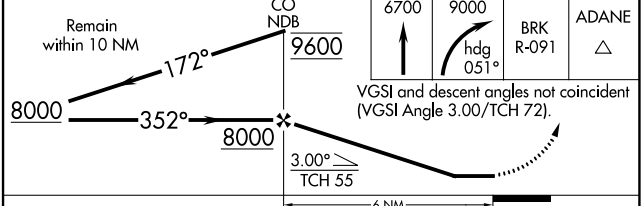
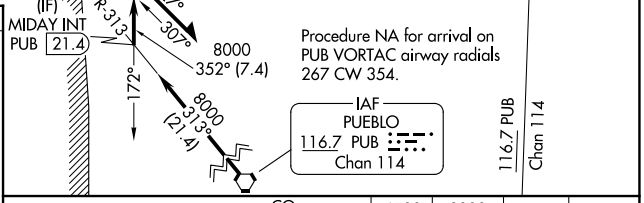
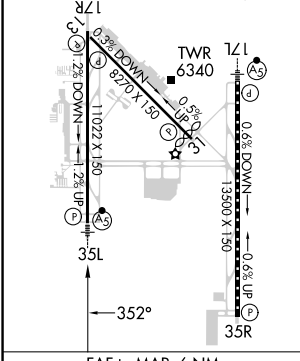


MISSED APPROACH: Climb to 6700 then climbing right turn to 9000 on heading 051° and on BRK VOR/DME R-091 to ADANE INT/BRK 11.1 DME and hold.

ATIS 125.0 254.3	SPRINGS APP CON 124.0 257.875	SPRINGS TOWER 119.9 360.6	GND CON 121.7 348.6	CLNC DEL 134.45 363.125
----------------------------	---	-------------------------------------	-------------------------------	-----------------------------------



ELEV 6187 **D** TDZE 6075
 HIRL Rwy 17R-35L and 17L-35R
 REIL Rwy 13, 17R, 31 and 35R
 TDZ/CL Rwy 17L and 35R
 MIRL Rwy 13-31



FAF to MAP 6 NM

Knots	60	90	120	150	180
Min:Sec	6:00	4:00	3:00	2:24	2:00

CATEGORY	A	B	C	D
S-35L	6540/40	465 (400-¾)	6540/50	465 (400-1)
C CIRCLING	6740-1 553 (600-1)	6760-1 573 (600-1)	6980-2¼ 793 (800-2¼)	7240-3 1053 (1100-3)

SW-1, 22 FEB 2024 to 21 MAR 2024

SW-1, 22 FEB 2024 to 21 MAR 2024

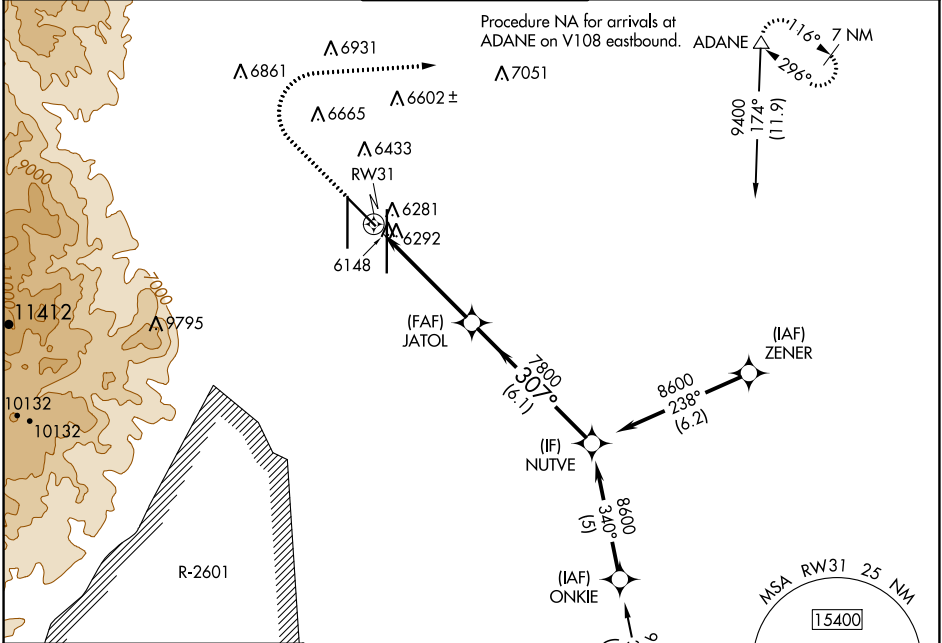
WAAS CH 40040 W31A	APP CRS 307°	Rwy Idg TDZE Apt Elev	7914 6156 6187
--	------------------------	-----------------------------	---

RNAV (GPS) RWY 31

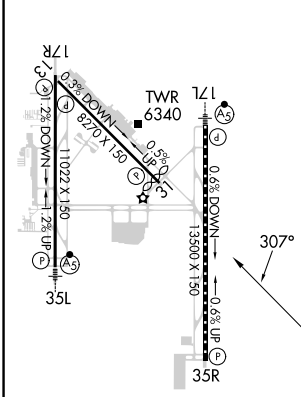
CITY OF COLORADO SPRINGS MUNI (COS)

DME/DME RNP-0.3 NA.		MISSED APPROACH: Climb to 6700 then climbing right turn to 9000 direct ADANE and hold.		
---------------------	--	--	--	--

ATIS 125.0 254.3	SPRINGS APP CON 124.0 257.875	SPRINGS TOWER 119.9 360.6	GND CON 121.7 348.6	CLNC DEL 134.45 363.125
----------------------------	---	-------------------------------------	-------------------------------	-----------------------------------

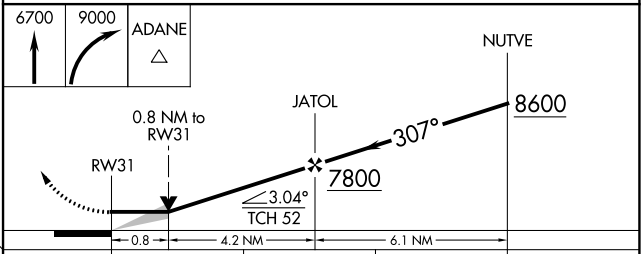


ELEV 6187	D	TDZE 6156
-----------	----------	-----------



MIRL Rwy 13-31
HIRL Rwys 17R-35L and 17L-35R
REIL Rwys 13, 17R, 31 and 35R
TDZ/CL Rwys 17L and 35R

Procedure NA for arrivals on PUB VORTAC airway radials 267 CW 354.



CATEGORY	A	B	C	D
LP MDA	6440-1	284 (300-1)	6440-7/8	284 (300-7/8)
LNAV MDA	6560-1	404 (400-1)	6560-1 1/8	404 (400-1 1/8)
C CIRCLING	6740-1 553 (600-1)	6800-1 613 (700-1)	7040-2 1/2 853 (900-2 1/2)	7260-3 1073 (1100-3)

SW-1, 22 FEB 2024 to 21 MAR 2024

SW-1, 22 FEB 2024 to 21 MAR 2024

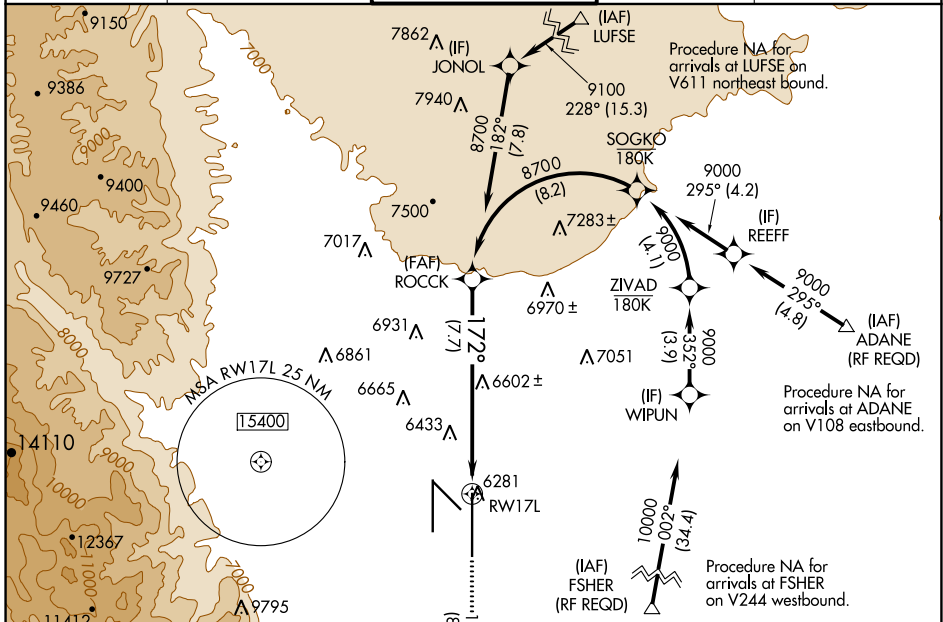
APP CRS 172°	Rwy Idg TDZE Apt Elev	13500 6187 6187
------------------------	-----------------------------	--

RNAV (RNP) Z RWY 17L

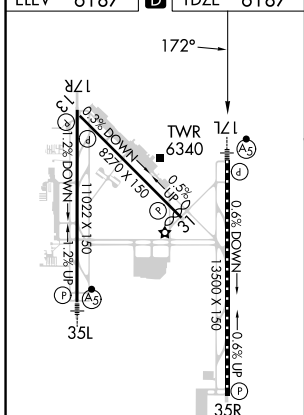
CITY OF COLORADO SPRINGS MUNI (COS)

RNP AR APCH - GPS.	MALSR	MISSED APPROACH: Climb to 9000 on track 172° to CEGIX and on track 130° to JEMKI and on track 084° to DRAKE and hold.
▼ For uncompensated Baro-VNAV systems, procedure NA below -21°C or above 44°C.		

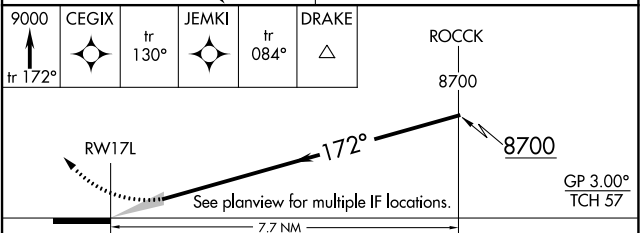
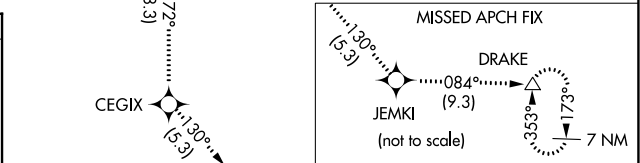
ATIS 125.0 254.3	SPRINGS APP CON 124.0 257.875	SPRINGS TOWER 119.9 360.6	GND CON 121.7 348.6	CLNC DEL 134.45 363.125
----------------------------	---	-------------------------------------	-------------------------------	-----------------------------------



ELEV	6187	D	TDZE	6187
------	-------------	----------	------	-------------



MIRL Rwy 13-31
HIRL Rwys 17R-35L and 17L-35R
REIL Rwys 13, 17R, 31 and 35R
TDZ/CL Rwys 17L and 35R



CATEGORY	A	B	C	D
RNP 0.15 DA		6557/40	370 (400-3/4)	
RNP 0.25 DA		6644/50	457 (500-1)	
RNP 0.30 DA		6920-2	733 (800-2)	

AUTHORIZATION REQUIRED

SW-1, 22 FEB 2024 to 21 MAR 2024

SW-1, 22 FEB 2024 to 21 MAR 2024

APP CRS	Rwy Idg	11022
172°	TDZE	6177
	Apt Elev	6187

RNAV (RNP) Z RWY 17R

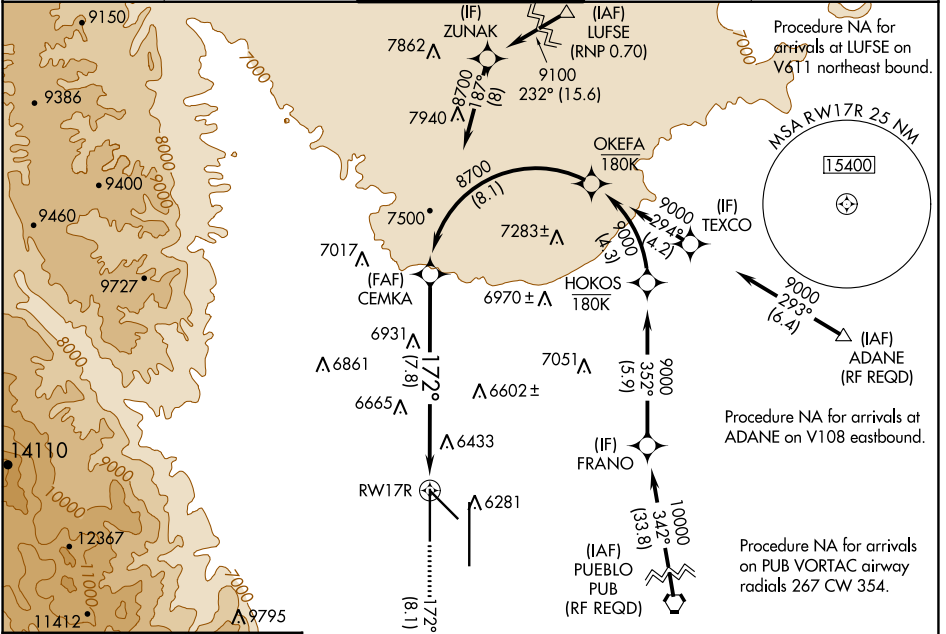
CITY OF COLORADO SPRINGS MUNI (COS)

RNP AR APCH - GPS.

⚠ For uncompensated Baro-VNAV systems, procedure NA below -21°C or above 45°C. Simultaneous approach authorized.

MISSED APPROACH: Climb to 9000 on track 172° to KUSAC and on track 125° to JEMKI and on track 084° to DRAKE and hold.

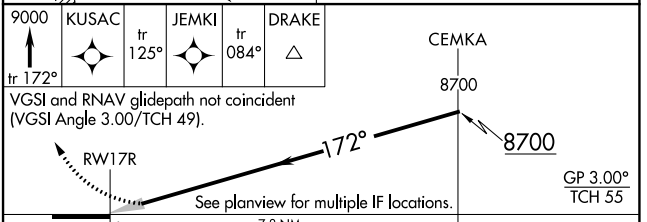
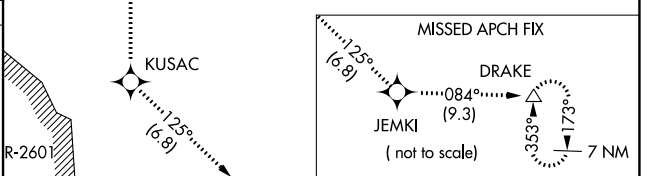
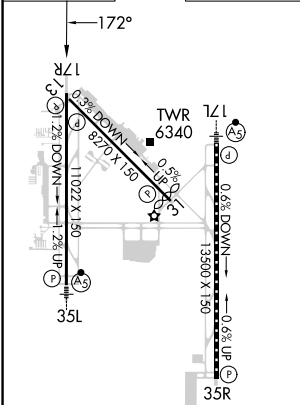
ATIS 125.0 254.3	SPRINGS APP CON 124.0 257.875	SPRINGS TOWER 119.9 360.6	GND CON 121.7 348.6	CLNC DEL 134.45 363.125
----------------------------	---	-------------------------------------	-------------------------------	-----------------------------------



SW-1, 22 FEB 2024 to 21 MAR 2024

SW-1, 22 FEB 2024 to 21 MAR 2024

ELEV 6187 **D** TDZE 6177



CATEGORY	A	B	C	D
RNP 0.22 DA		6659-1½	482 (500-1½)	
RNP 0.30 DA		6902-2½	725 (800-2½)	


AUTHORIZATION REQUIRED

RNAV (RNP) Z RWY 35L

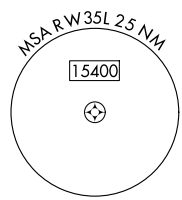
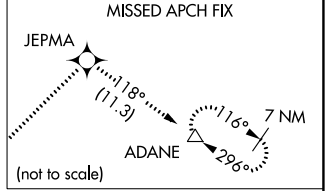
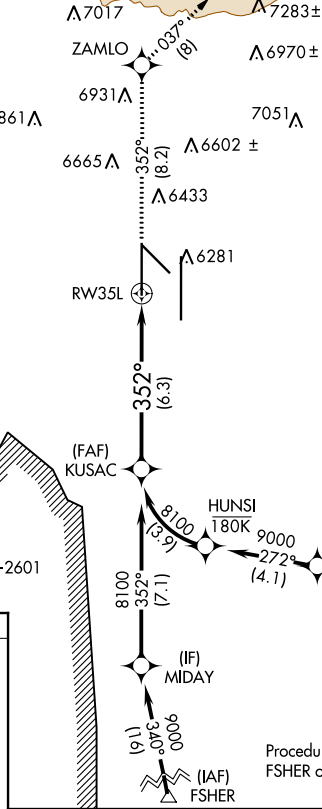
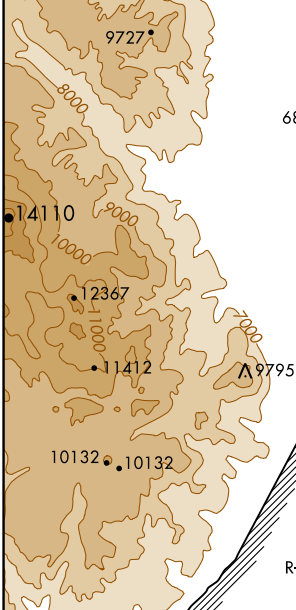
CITY OF COLORADO SPRINGS MUNI (COS)

APP CRS 352°	Rwy Idg 11022
	TDZE 6075
	Apt Elev 6187

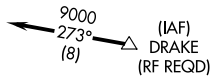
▼ For uncompensated Baro-VNAV systems, procedure NA below -21°C (-5°F) or above 45°C (113°F). GPS required. For inop MALSRS increase RNP 0.15 visibility all Cats to RVR 5000. RADAR monitoring required when R-2601 in use.

MALSRS  MISSED APPROACH: Climb to 9000 on track 352° to ZAMLO and on track 037° to JEPMA and on track 118° to ADANE and hold.

ATIS 125.0 254.3	SPRINGS APP CON 124.0 257.875	SPRINGS TOWER 119.9 360.6	GND CON 121.7 348.6	CLNC DEL 134.45 363.125
----------------------------	---	-------------------------------------	-------------------------------	-----------------------------------

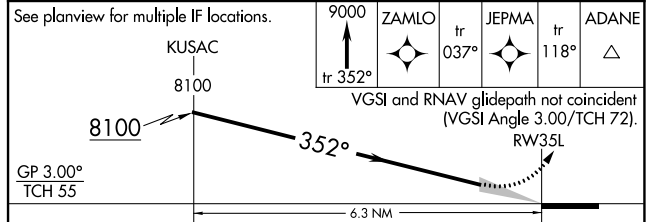
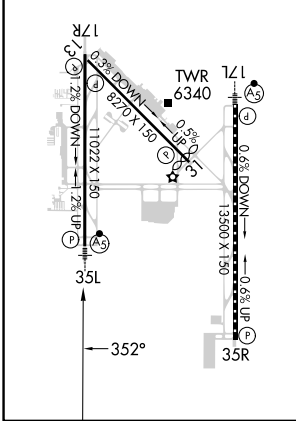


Procedure NA for arrivals at DRAKE on V83 southeast bound and V389 southbound.



Procedure NA for arrivals at FSHER on V244 eastbound.

ELEV 6187	D	TDZE 6075
MIRL Rwy 13-31		
HIRL Rws 17R-35L and 17L-35R		
REIL Rws 13, 17R, 31, and 35R		
TDZ/CL Rws 17L and 35R		



CATEGORY	A	B	C	D
RNP 0.15 DA		6372/30	297 (200-5%)	
RNP 0.30 DA		6427/40	352 (300-34)	

AUTHORIZATION REQUIRED

SW-1, 22 FEB 2024 to 21 MAR 2024

SW-1, 22 FEB 2024 to 21 MAR 2024

RNAV (RNP) Z RWY 35R

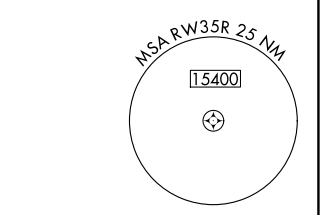
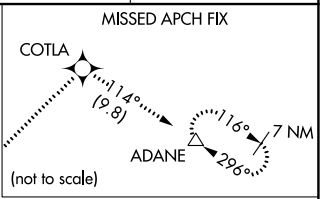
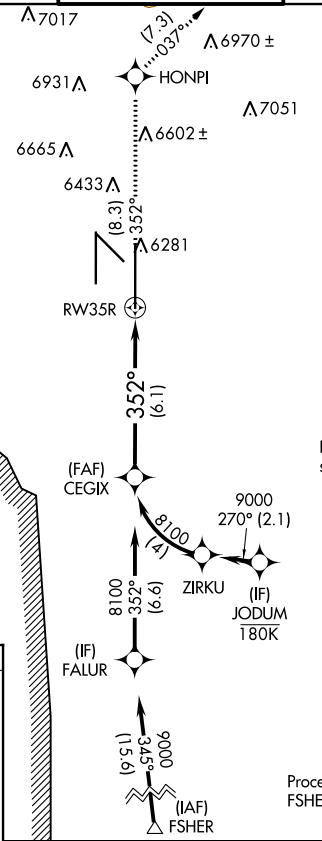
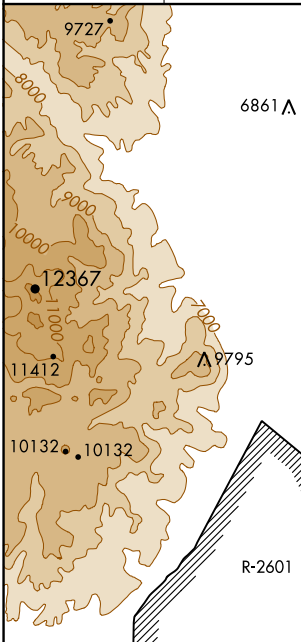
CITY OF COLORADO SPRINGS MUNI (COS)

APP CRS	Rwy Idg	13500
352°	TDZE	6118
	Apt Elev	6187

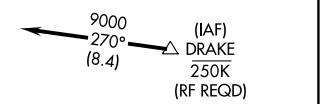
For uncompensated Baro-VNAV systems, procedure NA below -21°C (-5°F) or above 45°C (113°F). GPS required.

MISSED APPROACH: Climb to 9000 on track 352° to HONPI and track 037° to COTLA and track 114° to ADANE and hold.

ATIS 125.0 254.3	SPRINGS APP CON 124.0 257.875	SPRINGS TOWER 119.9 360.6	GND CON 121.7 348.6	CLNC DEL 134.45 363.125
----------------------------	---	-------------------------------------	-------------------------------	-----------------------------------



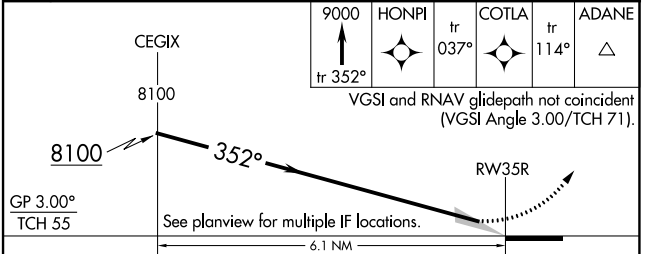
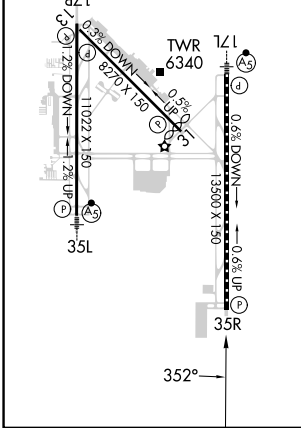
Procedure NA for arrivals at DRAKE on V83 southeast bound and V389 southbound



Procedure NA for arrivals at FSHER on V244 eastbound.

ELEV	6187	TDZE	6118
------	-------------	------	-------------

HIRL Rwy 17R-35L and 17L-35R
REIL Rwy 13, 17R, 31, and 35R
TDZ/CL Rwy 17L and 35R
MIRL Rwy 13-31



GP 3.00°	TCH 55	6.1 NM
----------	--------	--------

CATEGORY	A	B	C	D
RNP 0.30 DA		6461/60	343 (300-1¼)	

AUTHORIZATION REQUIRED

SW-1, 22 FEB 2024 to 21 MAR 2024

SW-1, 22 FEB 2024 to 21 MAR 2024

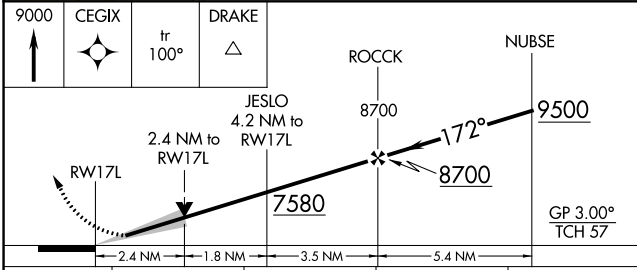
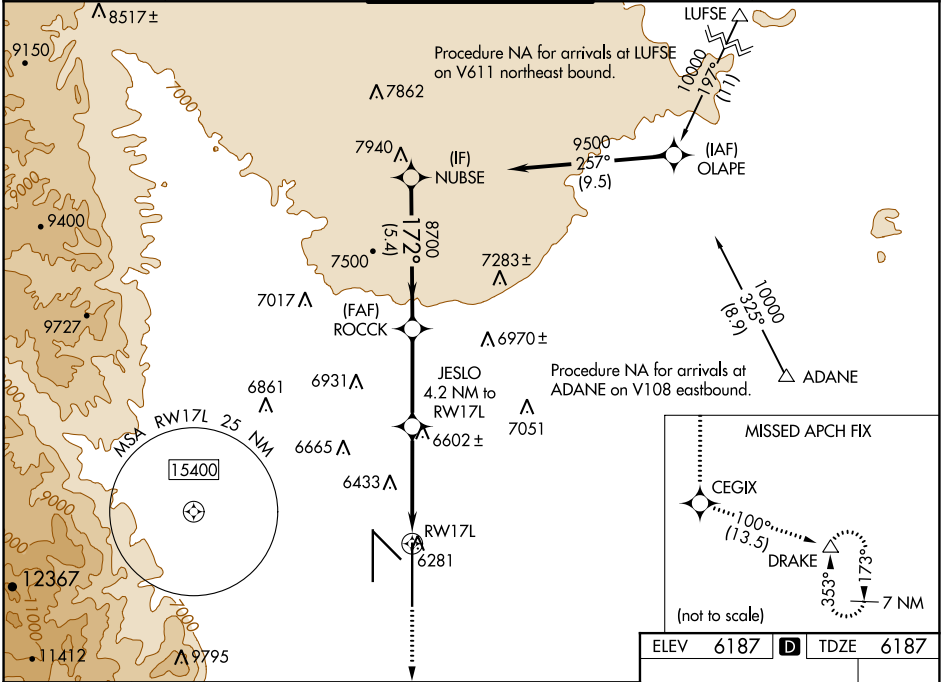
WAAS CH 69618 W17A	APP CRS 172°	Rwy Idg TDZE Apt Elev	13500 6187 6187
--	------------------------	-----------------------------	--

RNAV (GPS) Y RWY 17L

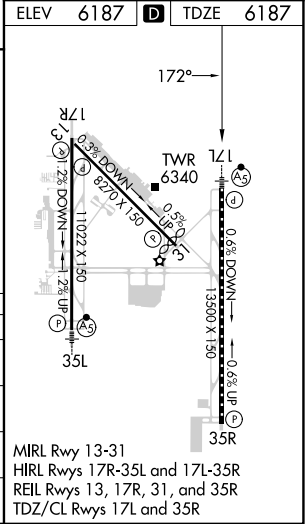
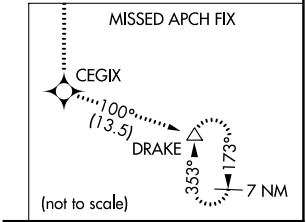
CITY OF COLORADO SPRINGS MUNI (COS)

RNP APCH - GPS.		MALSRL	MISSED APPROACH: Climb to 9000 direct CEGIX and on track 100° to DRAKE and hold.	
⚠ For uncompensated Baro-VNAV systems, LNAV/VNAV NA below -21°C or above 44°C. For inop MALSRL, increase LNAV Cat C/D visibility to 2½ SM.				

ATIS 125.0 254.3	SPRINGS APP CON 124.0 257.875	SPRINGS TOWER 119.9 360.6	GND CON 121.7 348.6	CLNC DEL 134.45 363.125
----------------------------	---	-------------------------------------	-------------------------------	-----------------------------------



CATEGORY	A	B	C	D
LPV DA		6387/18	200 (200-½)	
LNAV/VNAV DA		6602/45	415 (500-¾)	
LNAV MDA	7000/24 813 (900-½)	7000/40 813 (900-¾)	7000-1⅞	813 (900-1⅞)
C CIRCLING	7000-1¼	813 (900-1¼)	7040-2½ 853 (900-2½)	7260-3 1073 (1100-3)



SW-1, 22 FEB 2024 to 21 MAR 2024

SW-1, 22 FEB 2024 to 21 MAR 2024

RNAV (GPS) Y RWY 17R

CITY OF COLORADO SPRINGS MUNI (COS)

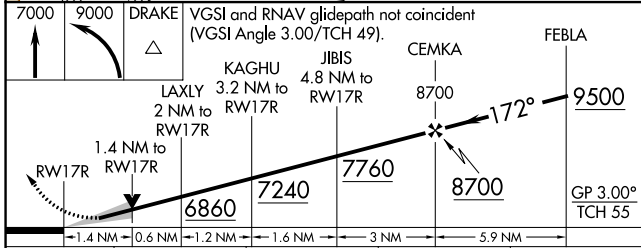
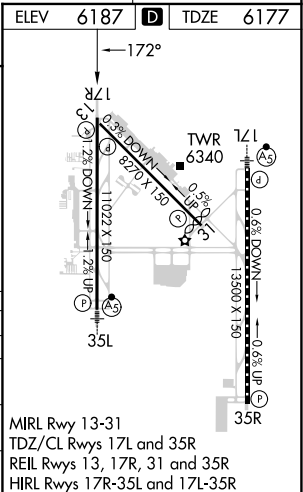
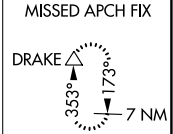
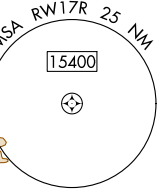
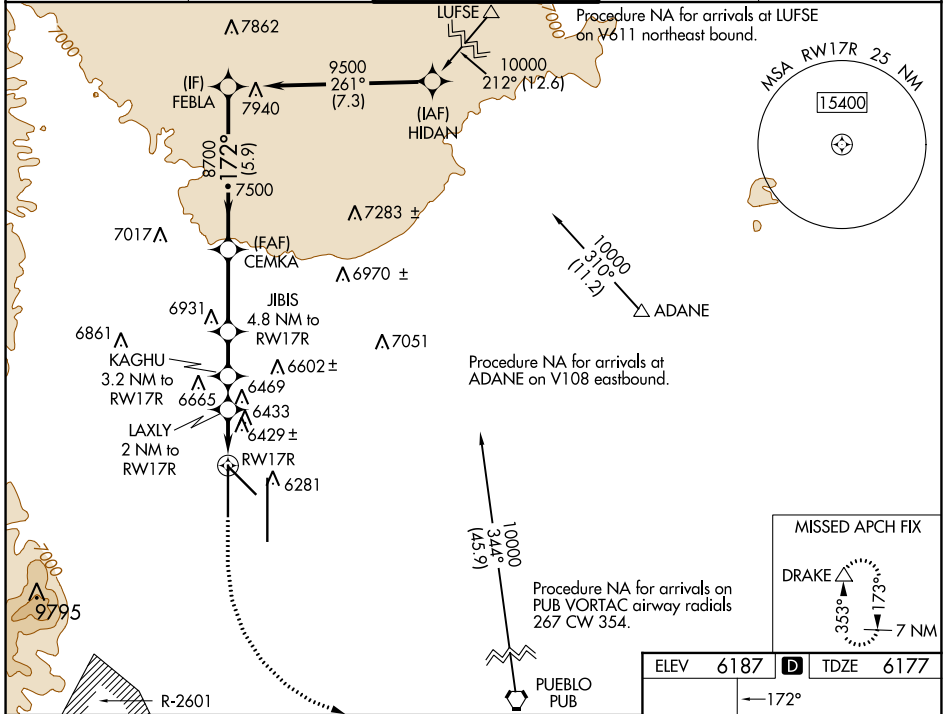
WAAS CH 72800 W17B	APP CRS 172°	Rwy ldg TDZE Apt Elev	11022 6177 6187
--	------------------------	-----------------------------	--

RNP APCH - GPS.

⚠ For uncompensated Baro-VNAV systems, LNAV/VNAV NA below -21°C or above 54°C.
⚠ Simultaneous approach authorized with ILS or LOC RWY 17L and ILS RWY 17L (SA CAT I).
 LNAV procedure NA during simultaneous operations. Use of FD or AP providing RNAV track guidance required during simultaneous operations.

MISSED APPROACH: Climb to 7000 then climbing left turn to 9000 direct DRAKE and hold.

ATIS 125.0 254.3	SPRINGS APP CON 124.0 257.875	SPRINGS TOWER 119.9 360.6	GND CON 121.7 348.6	CLNC DEL 134.45 363.125
----------------------------	---	-------------------------------------	-------------------------------	-----------------------------------



CATEGORY	A	B	C	D
LPV DA		6377/40	200 (200-¾)	
LNAV/VNAV DA		6752-2	575 (600-2)	
LNAV MDA	6680/55	503 (500-1)	6680-1⅓	503 (500-1⅓)
C CIRCLING	6740-1 553 (600-1)	6800-1 613 (700-1)	7040-2½ 853 (900-2½)	7260-3 1073 (1100-3)

SW-1, 22 FEB 2024 to 21 MAR 2024


SW-1, 22 FEB 2024 to 21 MAR 2024

WAAS CH 49112	APP CRS 352°	Rwy Idg TDZE 6075	11022
W35A		Apt Elev 6187	

RNAV (GPS) Y RWY 35L

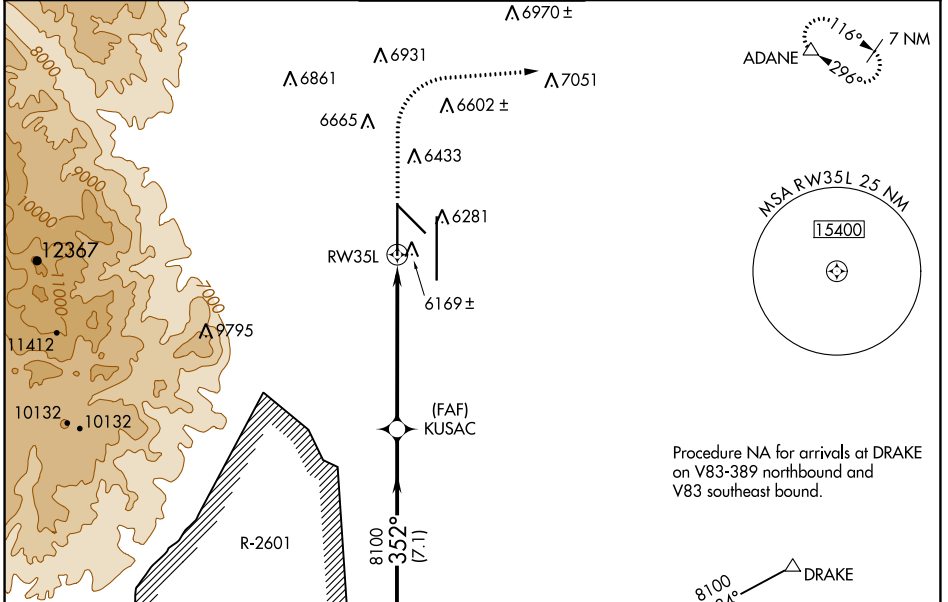
CITY OF COLORADO SPRINGS MUNI (COS)

⚠ For uncompensated Baro-VNAV systems, LNAV/VNAV NA below -21°C (-5°F) or above 54°C (130°F). DME/DME RNP- 0.3 NA. For inop MALSR increase LNAV Cat C and D visibility to RVR 5500. RADAR monitoring required when R-2601 in use. # RVR 1800 authorized with use of FD or AP or HUD to DA.

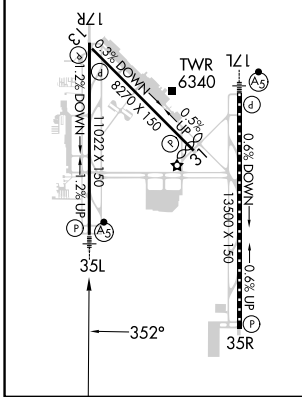
MALSR 

MISSED APPROACH: Climb to 6700 then climbing right turn to 9000 direct ADANE and hold.

ATIS 125.0 254.3	SPRINGS APP CON 124.0 257.875	SPRINGS TOWER 119.9 360.6	GND CON 121.7 348.6	CLNC DEL 134.45 363.125
-----------------------------------	--	--	--------------------------------------	--



ELEV 6187	D	TDZE 6075
MIRL Rwy 13-31		
HIRL Rwy 17R-35L and 17L-35R		
REIL Rwy 13, 17R, 31 and 35R		
TDZ/CL Rwy 17L and 35R		



VGSI and RNAV glidepath not coincident (VGSI Angle 3.00/TCH 72).

MIDAY $\xrightarrow{8100}$ KUSAC $\xrightarrow{352^\circ}$ RW35L

GP 3.00° TCH 55

Waypoints: MIDAY, KUSAC, ASHLL, PUEBLO, PUB, DRAKE.

Altitudes: 8100, 7.11, 6169, 6281, 6602, 6931, 7051, 6970, 6861, 6433, 6281, 6169, 6075, 6187, 6075, 6700, 9000, ADANE.

Distances: 7.1 NM, 5.3 NM, 1 NM.

CATEGORY	A	B	C	D
LPV DA #		6275/24	200 (100-1/2)	
LNAV/ VNAV DA		6380/30	305 (200-5/8)	
LNAV MDA	6440/24	365 (300-1/2)	6440/35	365 (300-5/8)
C CIRCLING	6740-1 553 (600-1)	6800-1 613 (700-1)	7040-2 1/2 853 (900-2 1/2)	7260-3 1073 (1100-3)

SW-1, 22 FEB 2024 to 21 MAR 2024

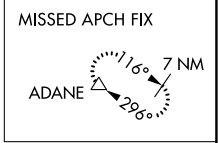
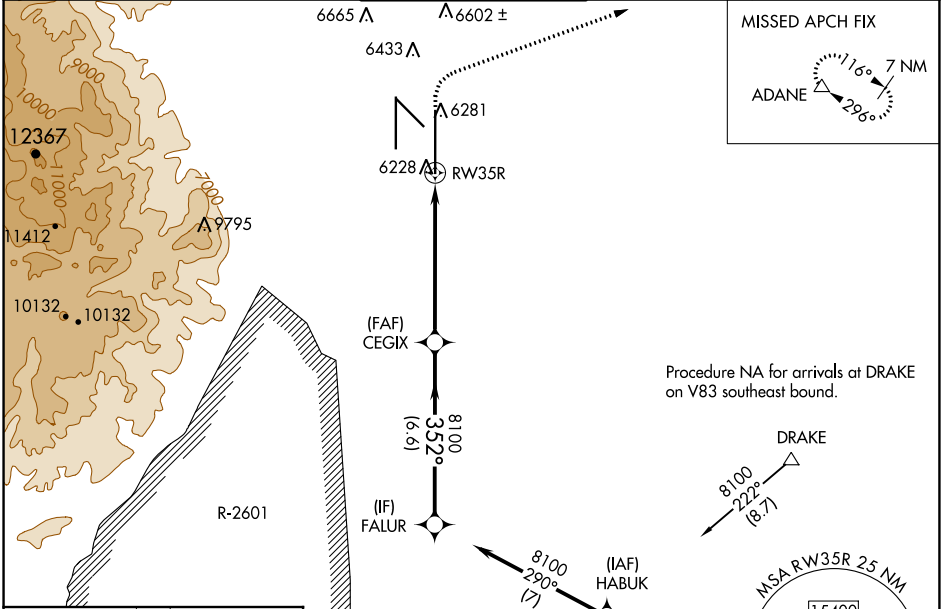
SW-1, 22 FEB 2024 to 21 MAR 2024

WAAS CH 53602 W35B	APP CRS 352°	Rwy Idg TDZE Apt Elev	13500 6118 6187
--	------------------------	-----------------------------	--

RNAV (GPS) Y RWY 35R

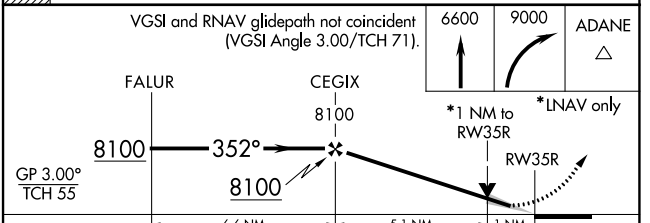
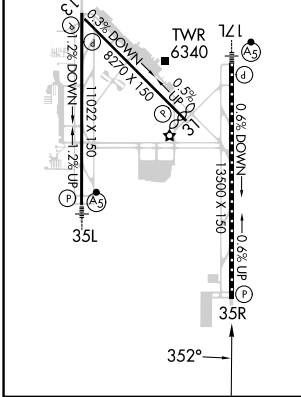
CITY OF COLORADO SPRINGS MUNI (COS)

▽ △	For uncompensated Baro-VNAV systems, LNAV/VNAV NA below -21°C (-5°F) or above 39°C (103°F). DME/DME RNP-0.3 NA. RADAR monitoring required when R-2601 in use.	MISSED APPROACH: Climb to 6600 then climbing right turn to 9000 direct ADANE and hold.		
ATIS 125.0 254.3	SPRINGS APP CON 124.0 257.875	SPRINGS TOWER 119.9 360.6	GND CON 121.7 348.6	CLNC DEL 134.45 363.125



Procedure NA for arrivals at DRAKE on V83 southeast bound.

ELEV 6187	D	TDZE 6118
MIRL Rwy 13-31		
HIRL Rwys 17R-35L and 17L-35R		
REIL Rwys 13, 17R, 31, and 35R		
TDZ/CL Rwys 17L and 35R		



CATEGORY	A	B	C	D
LPV DA		6318/40	200 (200-¾)	
LNAV/VNAV DA		6399/45	281 (300-¾)	
LNAV MDA	6500/55	382 (400-1)	6500/60	382 (400-1¼)
C CIRCLING	6740-1	6800-1	7040-2½	7260-3
	553 (600-1)	613 (700-1)	853 (900-2½)	1073 (1100-3)

SW-1, 22 FEB 2024 to 21 MAR 2024

SW-1, 22 FEB 2024 to 21 MAR 2024

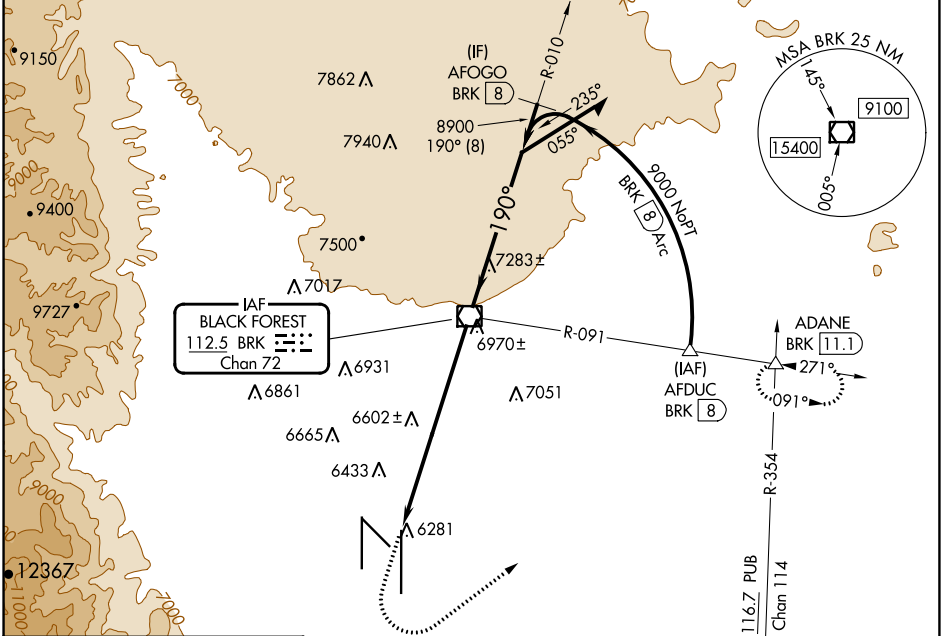
VOR/DME BRK 112.5 Chan 72	APP CRS 190°	Rwy Idg 13500 TDZE 6187 Apt Elev 6187
---	------------------------	--

VOR RWY 17L

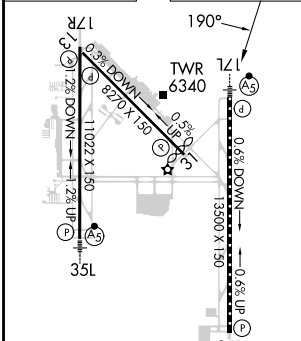
CITY OF COLORADO SPRINGS MUNI (COS)

DME and RADAR required for procedure entry at AFDUC.		MALSR 	MISSED APPROACH: Climb to 7900 then climbing left turn to 9000 on heading 045° and BRK VOR/DME R-091 to ADANE INT/BRK VOR/DME 11.1 DME and hold.
Inop table does not apply.			

ATIS 125.0 254.3	SPRINGS APP CON 124.0 257.875	SPRINGS TOWER 119.9 360.6	GND CON 121.7 348.6	CLNC DEL 134.45 363.125
----------------------------	---	-------------------------------------	-------------------------------	-----------------------------------

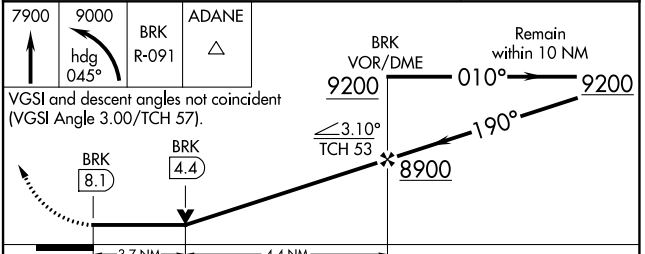


ELEV 6187	D	TDZE 6187
-----------	----------	-----------



MIRL Rwy 13-31
HIRL Rwys 17R-35L and 17L-35R
REIL Rwys 13, 17R, 31 and 35R
TDZ/CL Rwys 17L and 35R

FAF to MAP 8.1 NM					
Knots	60	90	120	150	180
Min:Sec	8:06	5:24	4:03	3:14	2:42



CATEGORY	A	B	C	D
S-17L	7440-1¼ 1253 (1300-1½)	7440-1½ 1253 (1300-1½)	7440-3	1253 (1300-3)
<input checked="" type="checkbox"/> CIRCLING	7440-1¼ 1253 (1300-1¼)	7440-1½ 1253 (1300-1½)	7440-3	1253 (1300-3)

VOR RWY 17L

SW-1, 22 FEB 2024 to 21 MAR 2024

SW-1, 22 FEB 2024 to 21 MAR 2024