

WAAS CH <b>63043</b> <b>W18A</b>	APP CRS <b>178°</b>	Rwy Idg TDZE Apt Elev	<b>6003</b> <b>6661</b> <b>6691</b>
--	------------------------	-----------------------------	---

# RNAV (GPS) RWY 18

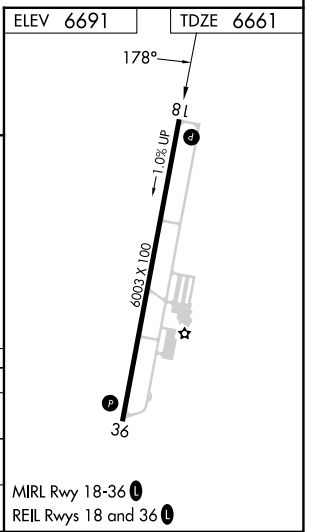
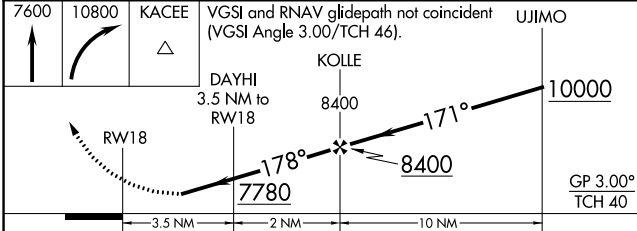
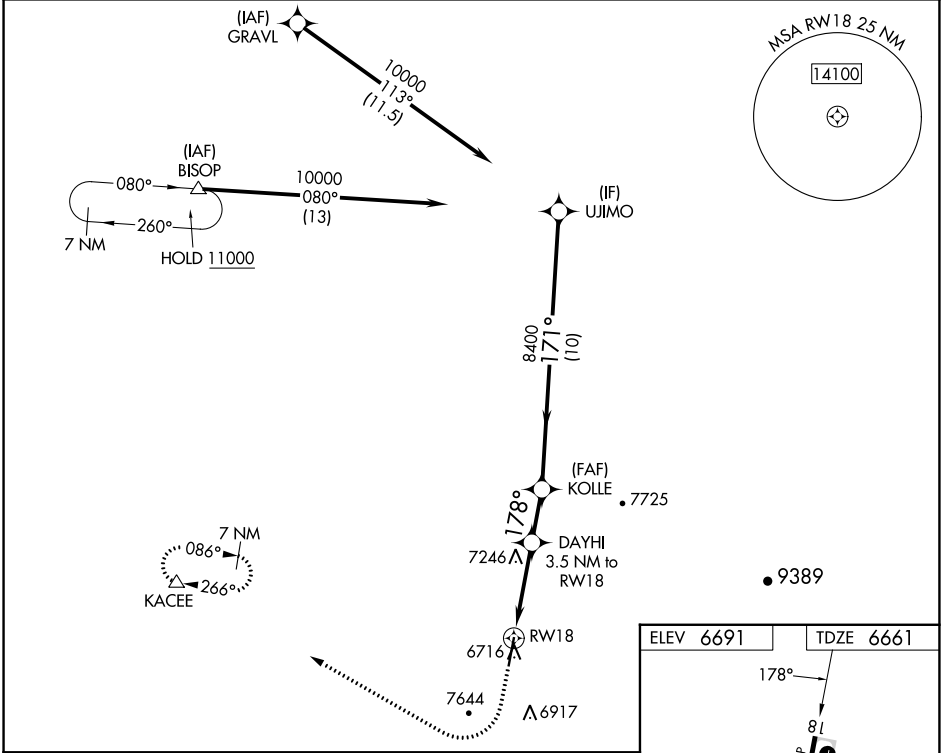
H A CLARK MEML FLD (CMR)

RNP APCH - GPS.

**⚠** Procedure NA at night. Rwy 18 helicopter visibility reduction below 1 SM NA. Circling NA east of Rwy 18-36.

**MISSED APPROACH:** Climb to 7600, then climbing right turn to 10800 direct KACEE and hold, continue climb-in-hold to 10800.

AWOS-3 <b>121.125</b>	ALBUQUERQUE CENTER <b>128.45 298.9</b>	UNICOM <b>122.8 (CTAF)</b>
--------------------------	---	-------------------------------



CATEGORY	A	B	C	D
LPV DA	7281-1¼		620 (600-1¼)	
RNAV MDA	7520-1 859 (900-1)	7520-1¼ 859 (900-1¼)	7520-2½	859 (900-2½)
CIRCLING	7520-1¼ 829 (900-1¼)	7540-1¼ 849 (900-1¼)	8020-3	1329 (1400-3)

SW-4, 22 FEB 2024 to 21 MAR 2024

SW-4, 22 FEB 2024 to 21 MAR 2024