

LOC/DME I-CLM <b>108.9</b> Chan <b>26</b>	APP CRS <b>089°</b>	Rwy Idg <b>6347</b> TDZE <b>285</b> Apt Elev <b>291</b>
---	------------------------	---

# ILS or LOC RWY 9

WILLIAM R FAIRCHILD INTL (CLM)

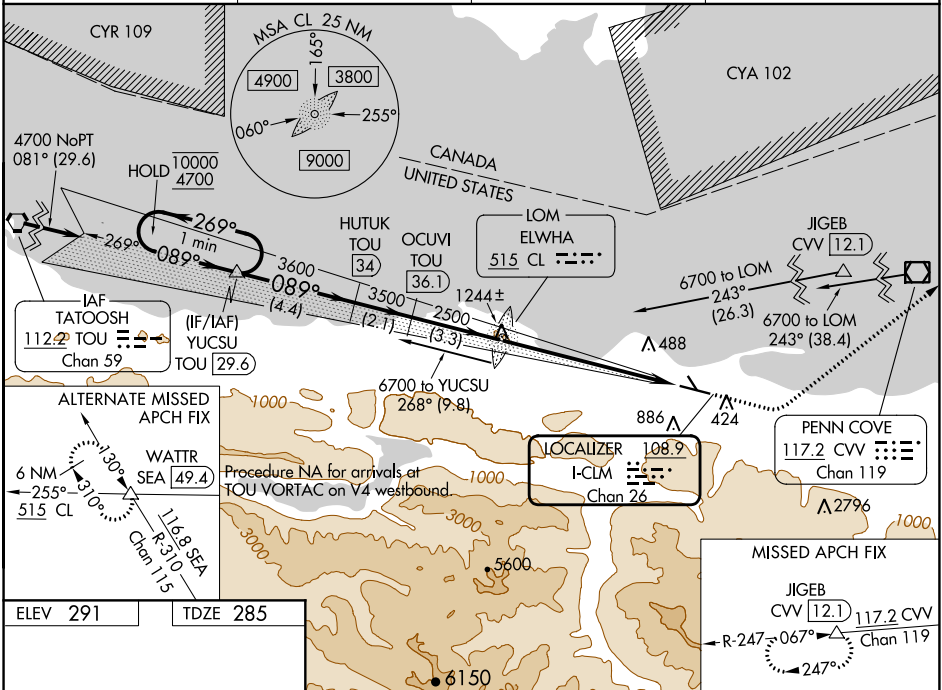
DME required. ADF required for LOC only.  
ADF required for procedure entry at JIGEB and CVV VOR/DME.

**NA** Circling NA south of Rwy 9-27. Circling Rwy 13, 31 NA at night.  
DME from TOU VORTAC. Simultaneous reception of I-CLM and TOU DME required. For inop ALS, increase S-LOC 9 Cat C/D visibility to 1½ SM.



MISSED APPROACH: Climb to 1000 then climbing left turn to 5400 on heading 030° and on CVV VOR/DME R-247 to JIGEB/CVV 12.1 DME and hold, continue climb-in-hold to 5400.

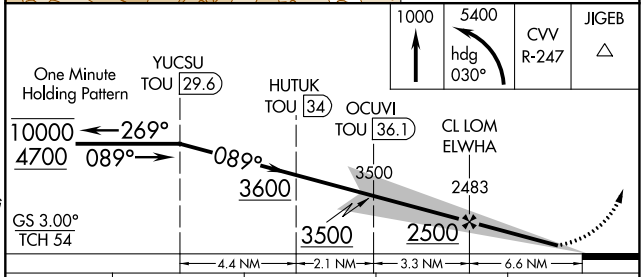
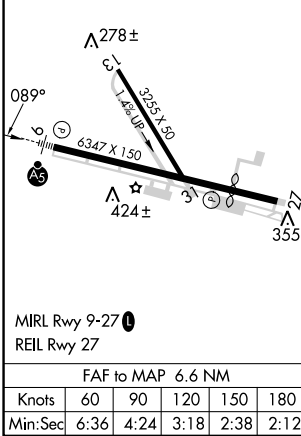
ASOS <b>135.175</b>	WHIDBEY APP CON <b>118.2 285.65</b>	CLNC DEL <b>124.15</b>	UNICOM <b>122.975 (CTAF)</b>
------------------------	--	---------------------------	---------------------------------



NW-1, 22 FEB 2024 to 21 MAR 2024

NW-1, 22 FEB 2024 to 21 MAR 2024

ELEV 291	TDZE 285
----------	----------



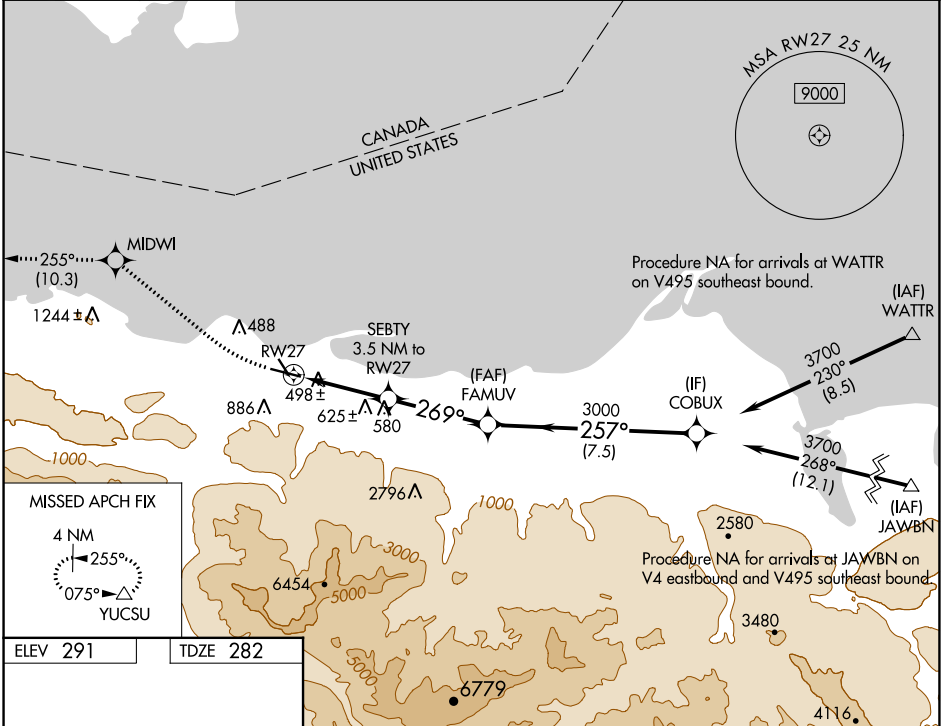
GS 3.00° TCH 54	4.4 NM	2.1 NM	3.3 NM	6.6 NM
CATEGORY	A	B	C	D
S-ILS 9	496-½ 211 (300-½)			
S-LOC 9	900-½	615 (700-½)	900-1¾	615 (700-1¾)
<b>C</b> CIRCLING	900-1	609 (700-1)	900-1¾	1000-2¼ 709 (800-2¼)

WAAS CH <b>90338</b> <b>W27A</b>	APP CRS <b>269°</b>	Rwy ldg TDZE Apt Elev	<b>4993</b> <b>282</b> <b>291</b>
--	------------------------	-----------------------------	---

# RNAV (GPS) RWY 27

WILLIAM R FAIRCHILD INTL (CLM)

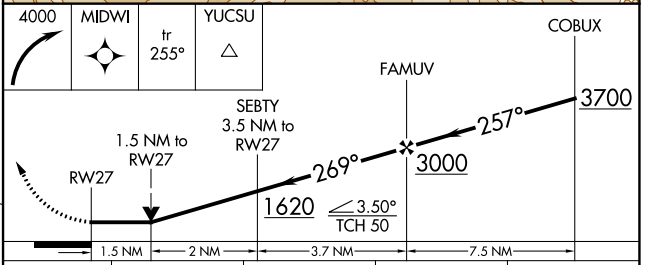
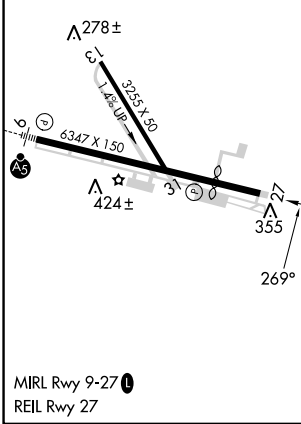
RNP APCH - GPS.		MISSED APPROACH: Climbing right turn to 4000 direct MIDWI and on track 255° to YUCSU and hold.	
<p>⚠ Circling Rwy 13, 31 NA at night.                  ⚠ Rwy 27 helicopter visibility reduction below ¼ SM NA.                  Circling NA south of Rwy 9-27.</p>		ASOS <b>135.175</b>	WHIDBEY APP CON <b>118.2 285.65</b>
		CLNC DEL <b>124.15</b>	UNICOM <b>122.975 (CTAF) 1</b>



NW-1, 22 FEB 2024 to 21 MAR 2024

NW-1, 22 FEB 2024 to 21 MAR 2024

ELEV 291	TDZE 282
----------	----------



	CATEGORY	A	B	C	D
LP	MDA	760-1	478 (500-1)	760-1 <sup>3</sup> / <sub>8</sub>	478 (500-1 <sup>3</sup> / <sub>8</sub> )
LNAV	MDA	920-1	638 (700-1)	920-1 <sup>3</sup> / <sub>4</sub>	638 (700-1 <sup>3</sup> / <sub>4</sub> )
	CIRCLING	920-1	629 (700-1)	920-1 <sup>3</sup> / <sub>4</sub>	1000-2 <sup>1</sup> / <sub>4</sub> 709 (800-2 <sup>1</sup> / <sub>4</sub> )

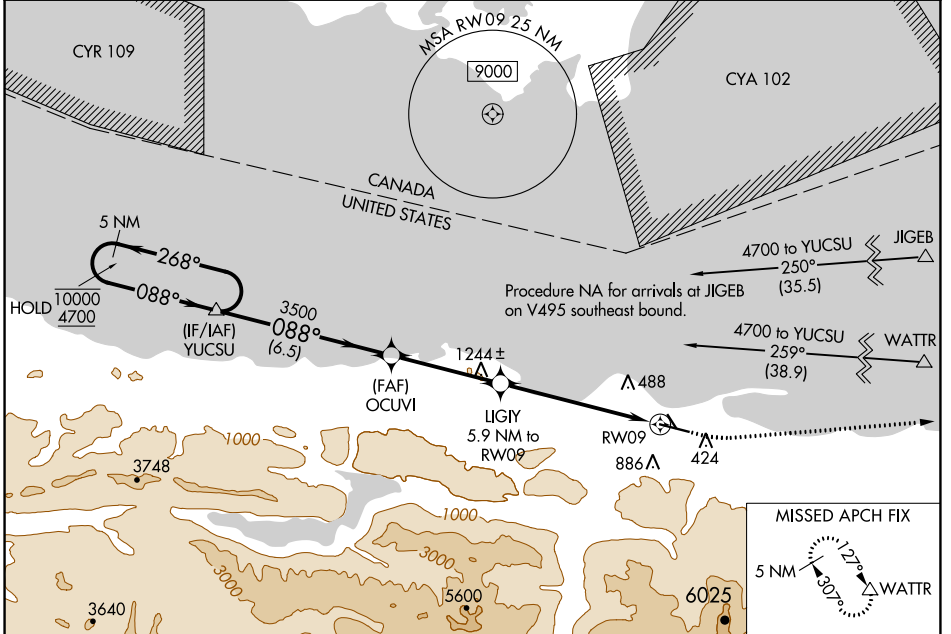
WAAS CH <b>77703</b> <b>W09A</b>	APP CRS <b>088°</b>	Rwy ldg TDZE Apt Elev	<b>6347</b> <b>285</b> <b>291</b>
--	------------------------	-----------------------------	---

# RNAV (GPS) RWY 9

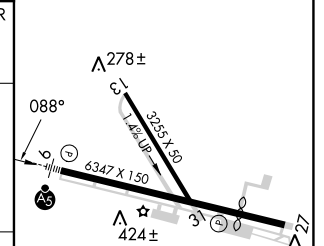
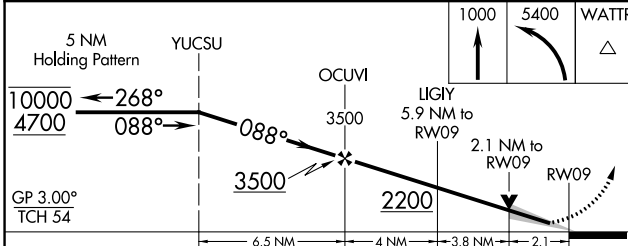
WILLIAM R FAIRCHILD INTL (CLM)

RNP APCH - GPS.	MALSR 	MISSED APPROACH: Climb to 1000 then climbing left turn to 5400 direct WATTR and hold, continue climb-in-hold to 5400.
Circling Rwy 13, 31 NA at night. Baro-VNAV NA. For inop ALS, increase LNAV/VNAV all Cats visibility to 1 3/8 SM and LNAV Cat C/D visibility to 1 7/8 SM. Circling NA south of Rwy 9-27.		

ASOS <b>135.175</b>	WHIDBEY APP CON <b>118.2 285.65</b>	CLNC DEL <b>124.15</b>	UNICOM <b>122.975 (CTAF)</b>
------------------------	--	---------------------------	---------------------------------



ELEV 291	TDZE 285
----------	----------



CATEGORY	A	B	C	D
LPV DA	505-1/2		220 (300-1/2)	
LNAV/VNAV DA	757-1 1/8		472 (500-1 1/8)	
LNAV MDA	960-1/2	675 (700-1/2)	960-1 1/2	675 (700-1 1/2)
CIRCLING	960-1	669 (700-1)	960-1 7/8	1000-2 1/4
			669 (700-1 7/8)	709 (800-2 1/4)

MIRL Rwy 9-27

REIL Rwy 27

NW-1, 22 FEB 2024 to 21 MAR 2024

NW-1, 22 FEB 2024 to 21 MAR 2024