

NDB CFJ	APP CRS	Rwy Idg	5506
388	044°	TDZE	797
		Apt Elev	800

NDB RWY 4

CRAWFORDSVILLE RGNL (CFJ)

▽ When local altimeter setting not received, use Greencastle altimeter setting: increase all MDA 60 feet and visibility Cats C and D ¼ SM. Rwy 4 helicopter visibility reduction below ¼ SM NA.

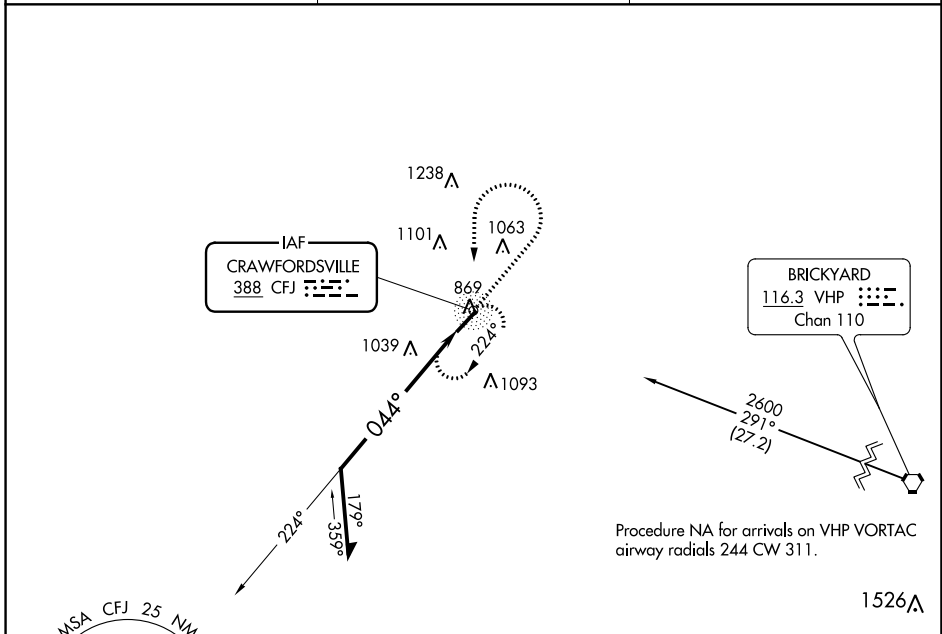
△ NA

MISSED APPROACH: Climb to 2400 then left turn direct CFJ NDB and hold.

AWOS-3PT
125.65

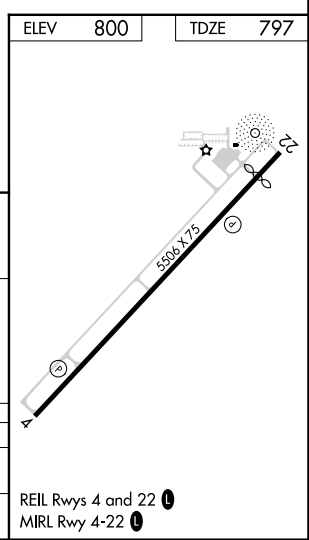
INDIANAPOLIS APP CON
119.05 317.8

UNICOM
122.8 (CTAF) ①



Procedure NA for arrivals on VHP VORTAC airway radials 244 CW 311.

1526△



CATEGORY	A	B	C	D
S-04	1420-1	623 (700-1)	1420-1¾	623 (700-1¾)
Ⓢ CIRCLING	1420-1	620 (700-1)	1440-1¾	1520-2¼
			640 (700-1¾)	720 (800-2¼)

EC-2, 22 FEB 2024 to 21 MAR 2024

EC-2, 22 FEB 2024 to 21 MAR 2024

WAAS CH 60941 W22A	APP CRS 227°	Rwy Idg TDZE Apt Elev	5004 799 800
--	------------------------	-----------------------------	---

RNAV (GPS) RWY 22

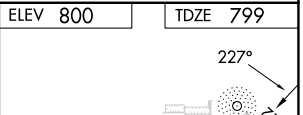
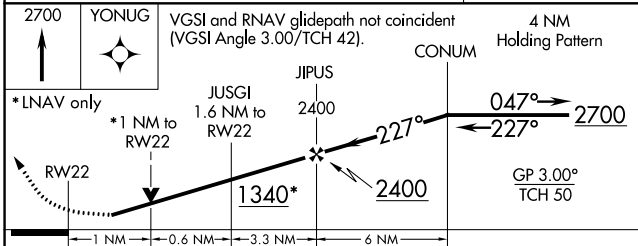
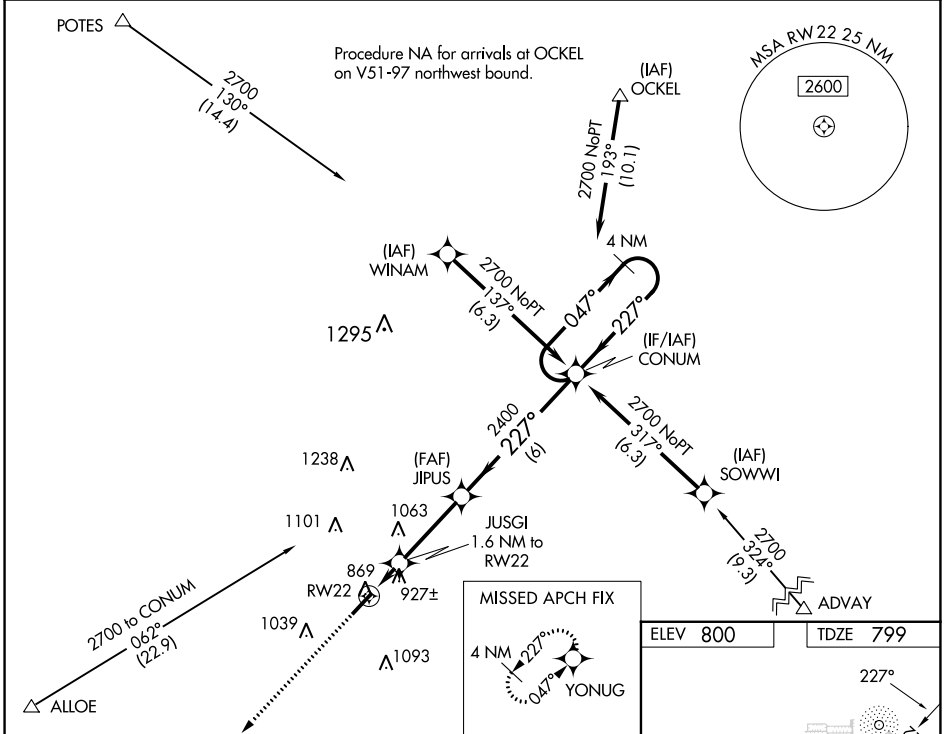
CRAWFORDSVILLE RGNL (CFJ)

RNP APCH.

▼ For uncompensated Baro-VNAV systems, LNAV/VNAV NA below -16°C or above 54°C. Baro-VNAV and VDP NA when using Greencastle altimeter setting. When local altimeter setting not received, use ▲ Greencastle altimeter setting; increase LPV DA to 1104 feet, LNAV/VNAV DA to 1115 feet; increase all MDA 60 feet and visibility Cats C and D ¼ SM. Rwy 22 helicopter visibility reduction below ¾ SM NA.

MISSED APPROACH:
Climb to 2700 direct YONUG and hold.

AWOS-3PT 125.65	INDIANAPOLIS APP CON 119.05 317.8	UNICOM 122.8 (CTAF) 0
---------------------------	---	---------------------------------



2700 ↑ YONUG	VGSI and RNAV glidepath not coincident (VGSI Angle 3.00/TCH 42).		4 NM Holding Pattern	
*LNAV only	JIPUS 2400	CONUM	047° → 2700 ← 227°	
	1 NM to RWY 22	1340	GP 3.00° TCH 50	
	JUSGI 1.6 NM to RWY 22	2400		
	1 NM	0.6 NM	3.3 NM	6 NM
CATEGORY	A	B	C	D
LPV DA		1052-1	253 (300-1)	
LNAV/VNAV DA		1063-1	264 (300-1)	
LNAV MDA	1180-1	381 (400-1)	1180-1½	381 (400-1½)
Ⓢ CIRCLING	1240-1 440 (500-1)	1260-1 460 (500-1)	1440-1¾ 640 (700-1¾)	1520-2¼ 720 (800-2¼)

REIL Rwy 4 and 22 0
MIRL Rwy 4-22 0

WAAS CH 82739 W04A	APP CRS 047°	Rwy Idg TDZE 797 Apt Elev 800	5506
--	------------------------	---	-------------

RNAV (GPS) RWY 4

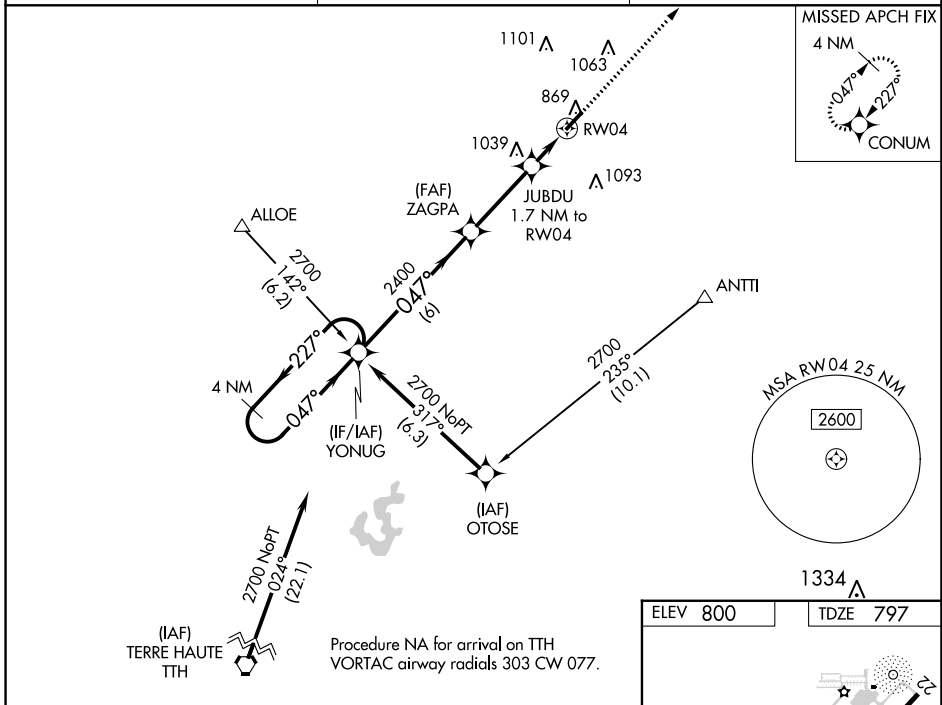
CRAWFORDSVILLE RGNL (CFJ)

RNP APCH.

Baro-VNAV NA when using Greencastle altimeter setting. For uncompensated Baro-VNAV systems, LNAV/VNAV NA below -16°C or above 54°C. When local altimeter setting not received, use Greencastle altimeter setting: increase LPV DA to 1128 feet and all visibilities ¼ SM, LNAV/VNAV DA to 1118 feet and all visibilities ¼ SM; increase all MDA 60 feet and Circling Cats C and D visibilities ¼ SM. Rwy 4 helicopter visibility reduction below ¾ SM NA.

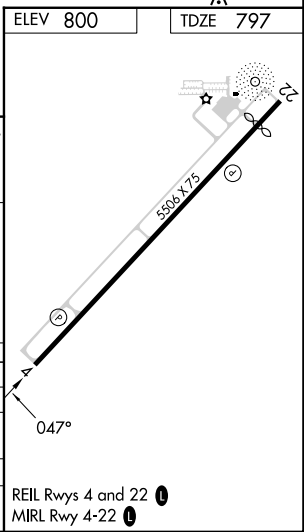
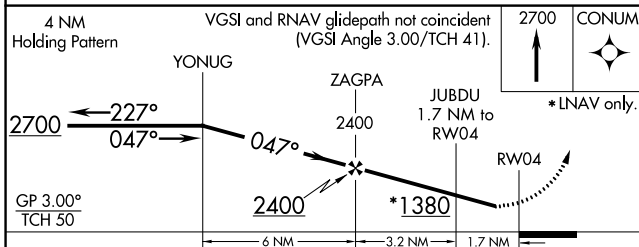
MISSED APPROACH:
Climb to 2700 direct CONUM and hold.

AWOS-3PT 125.65	INDIANAPOLIS APP CON 119.05 317.8	UNICOM 122.8 (CTAF)
---------------------------	---	-------------------------------



EC-2, 22 FEB 2024 to 21 MAR 2024

EC-2, 22 FEB 2024 to 21 MAR 2024



CATEGORY	A	B	C	D
LPV DA		1076-7/8	279 (300-7/8)	
LNAV/VNAV DA		1066-7/8	269 (300-7/8)	
LNAV MDA	1240-1	443 (500-1)	1240-1 3/8	443 (500-1 3/8)
CIRCLING	1240-1 440 (500-1)	1260-1 460 (500-1)	1440-1 3/4 640 (700-1 3/4)	1520-2 1/4 720 (800-2 1/4)