

WAAS CH <b>78227</b> <b>W01A</b>	APP CRS <b>007°</b>	Rwy Idg TDZE Apt Elev	<b>6502</b> <b>124</b> <b>130</b>
--	------------------------	-----------------------------	---

# RNAV (GPS) RWY 1

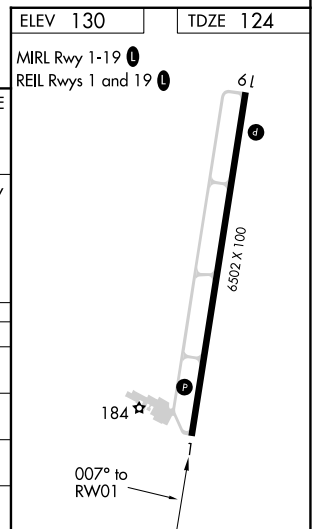
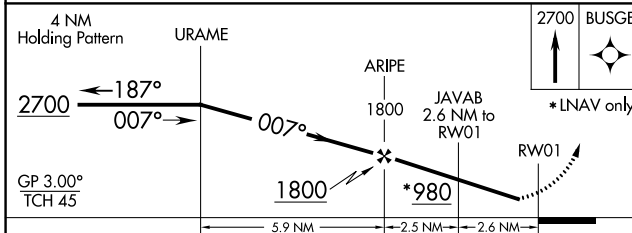
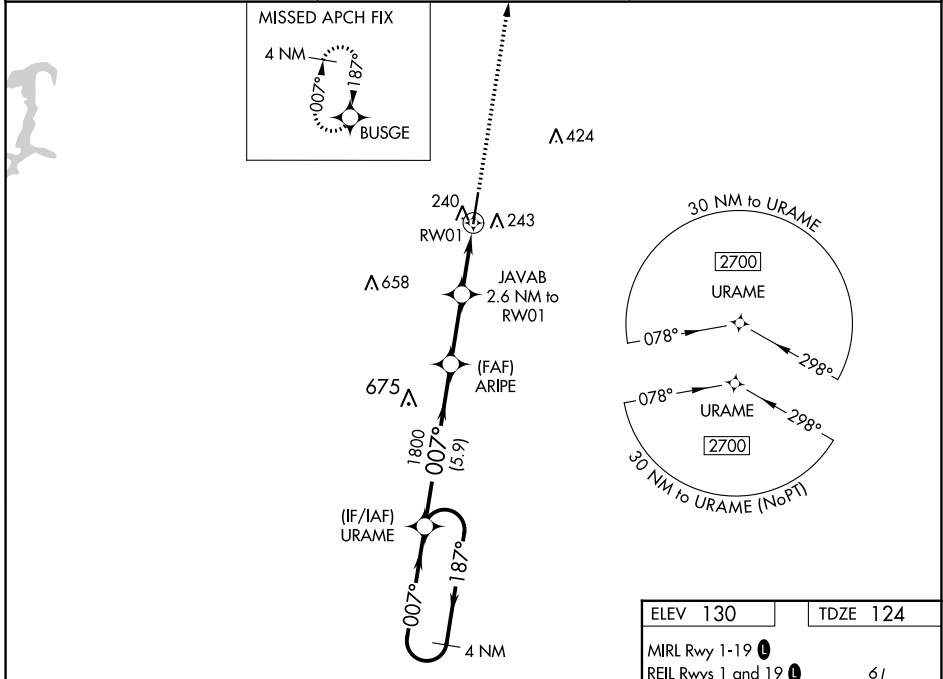
HARRELL FLD (CDH)

RNP APCH - GPS.

⚠ Baro-VNAV NA when using El Dorado altimeter setting. For uncompensated Baro-VNAV systems, LNAV/VNAV NA below -15°C or above 43°C. Rwy 1 helicopter visibility reduction below ¼ SM NA. When local altimeter setting not received, use El Dorado altimeter setting and increase LPV DA to 507 feet, LNAV/VNAV DA to 499 feet and all MDA 80 feet; increase LPV all Cats visibility ½ SM, LNAV Cats C and D ¾ SM, and Circling Cat D ¼ SM.

MISSED APPROACH:  
Climb to 2700 direct BUSGE and hold.

AWOS-3 <b>125.2</b>	FORT WORTH CENTER <b>128.2 269.1</b>	UNICOM <b>122.7 (CTAF)</b>
------------------------	---	-------------------------------



CATEGORY	A	B	C	D
LPV DA		430-1	306 (300-1)	
LNAV/VNAV DA		422-1	298 (300-1)	
LNAV MDA		500-1	376 (400-1)	
CIRCLING	560-1 430 (500-1)	580-1 450 (500-1)	580-1½ 450 (500-1½)	960-2¾ 830 (900-2¾)

SC-1, 22 FEB 2024 to 21 MAR 2024

SC-1, 22 FEB 2024 to 21 MAR 2024

WAAS CH <b>56627</b> <b>W19A</b>	APP CRS <b>187°</b>	Rwy Idg TDZE Apt Elev	<b>6502</b> <b>130</b> <b>130</b>
--	------------------------	-----------------------------	---

# RNAV (GPS) RWY 19

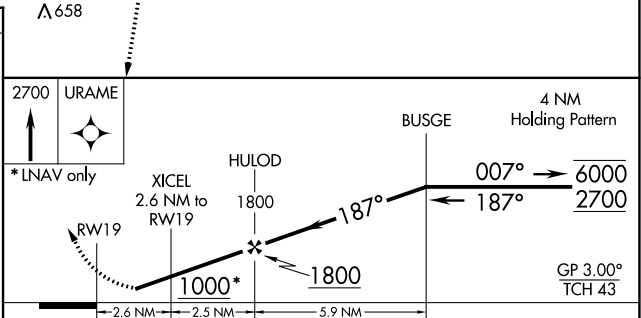
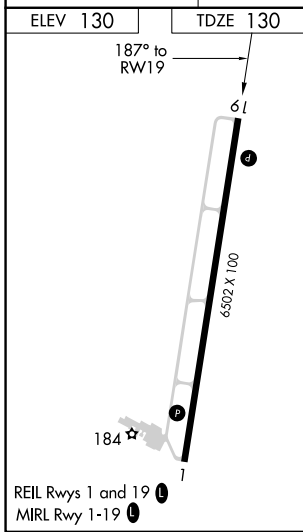
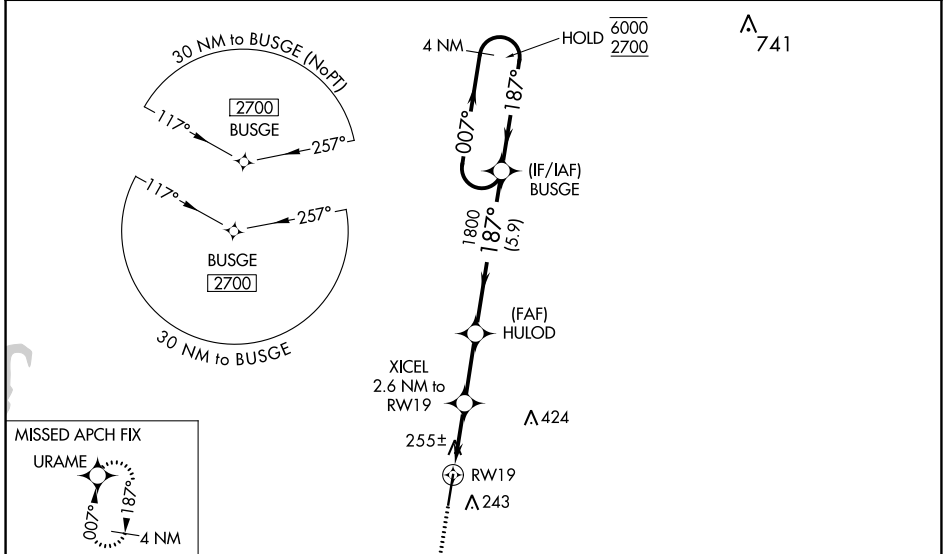
HARRELL FLD (CDH)

RNP APCH-GPS.

**⚠** Rwy 19 helicopter visibility reduction below 3/4 SM NA. Baro-VNAV NA when using El Dorado altimeter setting. For uncompensated Baro-VNAV systems, LNAV/VNAV NA below -15°C or above 54°C. When local altimeter setting not received, use El Dorado altimeter setting and LPV DA to 517 feet, LNAV/VNAV DA to 503 feet and all MDA 80 feet; increase LPV all Cats visibility 1/8 SM, and LNAV Cats C and D, and Circling Cat D 1/4 SM.

**MISSED APPROACH:** Climb to 2700 direct URAM and hold.

AWOS-3 <b>125.2</b>	FORT WORTH CENTER <b>128.2 269.1</b>	UNICOM <b>122.7 (CTAF) 0</b>
------------------------	---	---------------------------------



CATEGORY	A	B	C	D
LPV DA		440-1	310 (400-1)	
LNAV/VNAV DA		426-1	296 (300-1)	
LNAV MDA	520-1	390 (400-1)	520-1 1/8	390 (400-1 1/8)
CIRCLING	560-1 430 (500-1)	580-1 450 (500-1)	580-1 1/2 450 (500-1 1/2)	960-2 3/4 830 (900-2 3/4)

SC-1, 22 FEB 2024 to 21 MAR 2024

SC-1, 22 FEB 2024 to 21 MAR 2024