


LOC I-BVO <b>111.3</b>	APP CRS <b>176°</b>	Rwy ldg TDZE Apt Elev	<b>6201</b> <b>694</b> <b>717</b>
---------------------------	------------------------	-----------------------------	---

# LOC RWY 17

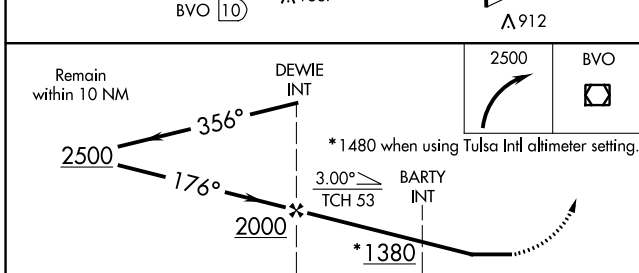
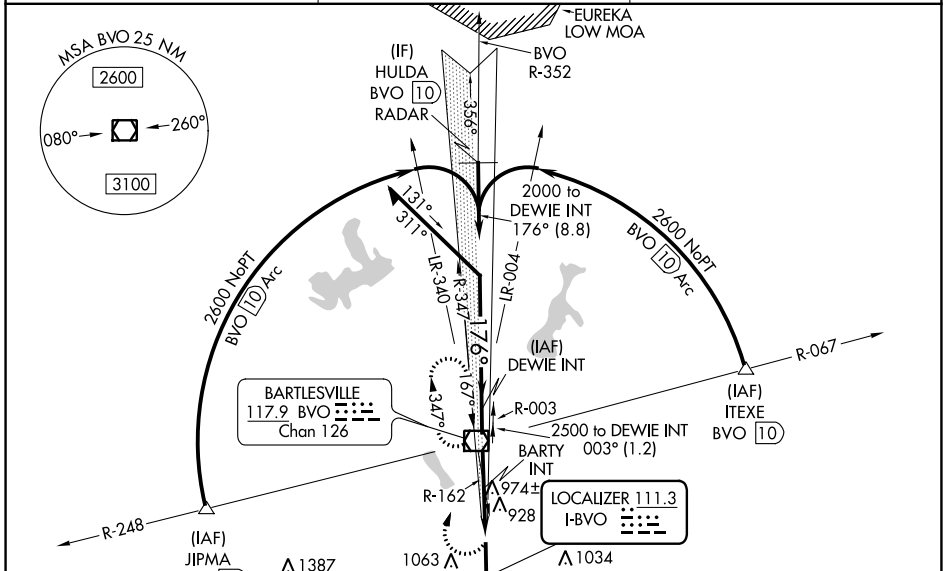
BARTLESVILLE MUNI (BVO)

**⚠️** Circling NA east of Rwy 17-35. Rwy 17 helicopter visibility reduction below 3/4 SM NA. When local altimeter setting not received, use Tulsa Intl altimeter setting and increase all MDAs 100 feet and S-17 visibility Cat C 1/4 SM, and Circling Cats B and C 1/2 SM; increase BARTY fix minimums visibility Cat C 1/4 SM. For inop ALS, increase S-17 visibility Cats A and B to 1 SM. For inop ALS when using Tulsa Intl altimeter setting, increase S-17 visibility Cat A to 1 SM and Cat C to 2 1/2 SM, and BARTY fix minimums S-17 visibility Cats A and B to 1 SM.

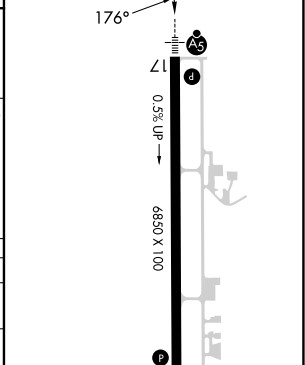
**MALSRL**  


**MISSED APPROACH:** Climbing right turn to 2500 direct BVO VOR/DME and hold, continue climb-in-hold to 2500.

ASOS <b>132.675</b>	KANSAS CITY CENTER <b>128.6 282.325</b>	CTAF <b>122.825</b>
------------------------	--	------------------------



ELEV 717	<b>D</b>	TDZE 694
----------	----------	----------



CATEGORY	A	B	C	D
S-17 *	1380-3/4	686 (700-3/4)	1380-1 1/2 686 (700-1 1/2)	NA
<b>C</b> CIRCLING	1380-1	663 (700-1)	1400-2 683 (700-2)	NA
BARTY FIX MINIMUMS (DUAL VOR RECEIVERS REQUIRED)				
S-17	1240-3/4	546 (600-3/4)	1240-1 1/8 546 (600-1 1/8)	NA
<b>C</b> CIRCLING	1380-1	663 (700-1)	1400-2 683 (700-2)	NA

MIRL Rwy 17-35	<b>1</b>	923			
REL Rwy 35	<b>1</b>	35			
FAF to MAP 4.9 NM					
Knots	60	90	120	150	180
Min:Sec	4:54	3:16	2:27	1:58	1:38

SC-1, 22 FEB 2024 to 21 MAR 2024

SC-1, 22 FEB 2024 to 21 MAR 2024

WAAS CH <b>58201</b> <b>W17A</b>	APP CRS <b>176°</b>	Rwy Idg TDZE Apt Elev	<b>6201</b> <b>694</b> <b>717</b>
--	------------------------	-----------------------------	---

# RNAV (GPS) RWY 17

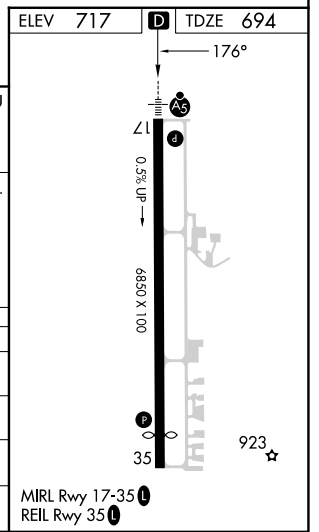
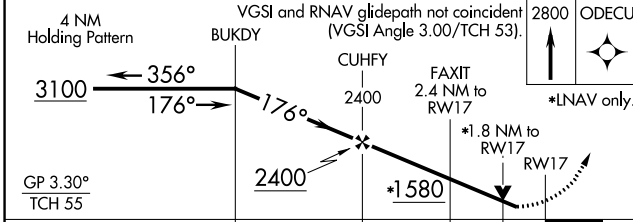
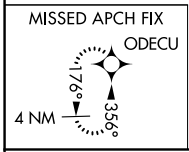
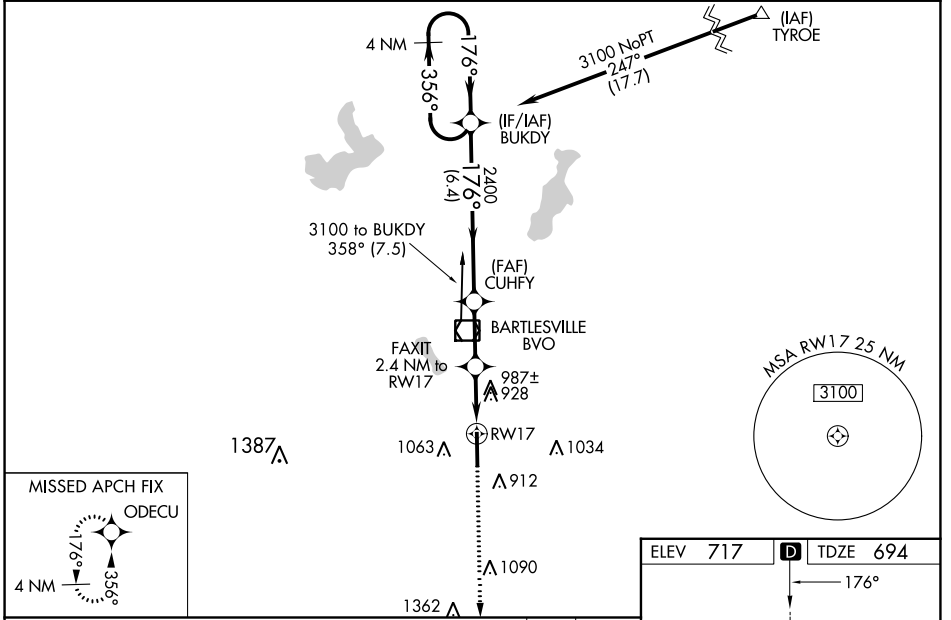
BARTLESVILLE MUNI (BVO)

**⚠** For uncompensated Baro-VNAV systems, LNAV/VNAV NA below -18°C (0°F) or above 54°C (130°F). DME/DME RNP-0.3 NA. When local altimeter setting not received, use Tulsa Intl altimeter setting and increase all DA 85 feet and all MDA 100 feet, increase LPV all Cats, LNAV/VNAV all Cats, LNAV and Circling Cat C visibility ¼ mile. Inop table does not apply to LPV all Cats. For inop MALS R, increase LNAV Cat A/B visibility to 1 mile. For inop MALS R when use Tulsa Intl altimeter setting, increase LNAV/VNAV all Cats visibility to 2½ mile, and LNAV Cat A/B visibility to 1 mile. Circling NA east of Rwy 17-35. Baro-VNAV and VDP NA when using Tulsa Intl altimeter setting. Helicopter visibility reduction below ¾ SM NA.

**MALS R**  
**AS**

**MISSED APPROACH:**  
Climb to 2800 direct ODECU and hold.

ASOS <b>132.675</b>	KANSAS CITY CENTER <b>128.6 282.325</b>	CTAF <b>122.825</b>
------------------------	--	------------------------



CATEGORY	A	B	C	D
LPV DA	906-¾	212 (200-¾)	944-¾ 250 (300-¾)	NA
LNAV/VNAV DA	1317-1½		623 (700-1½)	NA
LNAV MDA	1240-¾	546 (600-¾)	1240-1⅛ 546 (600-1⅛)	NA
<b>C</b> CIRCLING	1380-1	663 (700-1)	1400-2 683 (700-2)	NA

SC-1, 22 FEB 2024 to 21 MAR 2024

SC-1, 22 FEB 2024 to 21 MAR 2024

WAAS CH <b>61305</b> <b>W35A</b>	APP CRS <b>356°</b>	Rwy Idg <b>6201</b> TDZE <b>712</b> Apt Elev <b>717</b>
--	------------------------	---

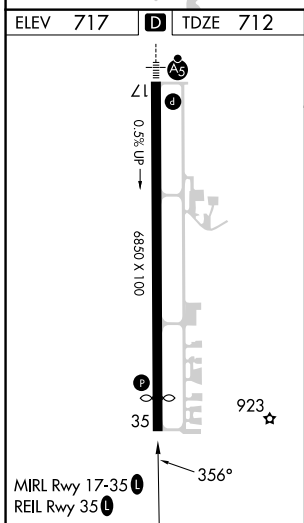
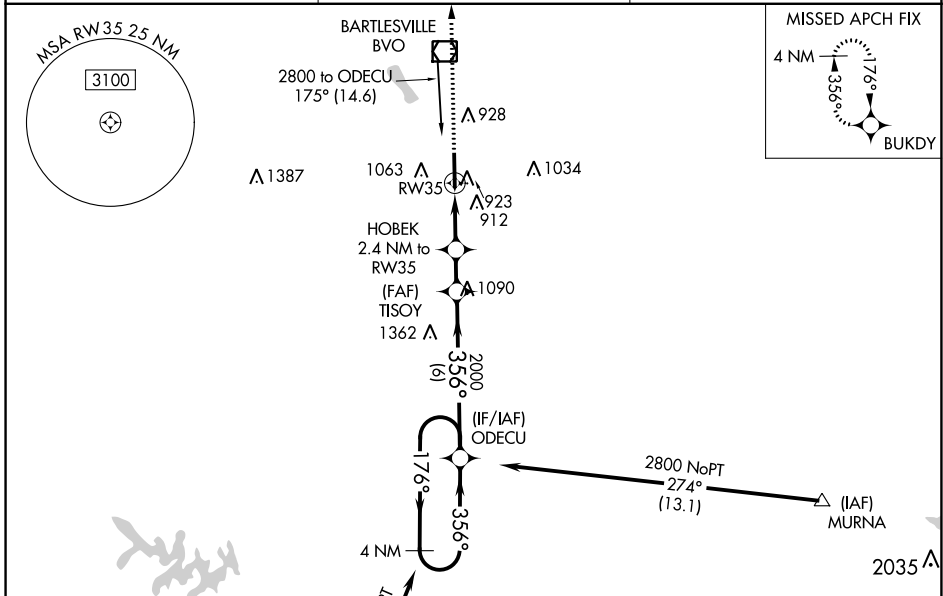
# RNAV (GPS) RWY 35

BARTLESVILLE MUNI (BVO)

**⚠** For uncompensated Baro-VNAV systems, LNAV/VNAV NA below -18°C (0°F) or above 54°C (130°F).  
**⚠** DME/DME RNP-0.3 NA. When local altimeter setting not received, use Tulsa Intl altimeter setting and increase all DA 85 feet and all MDA 100 feet, increase LPV all Cats visibility ¼ mile, LNAV/VNAV all Cats visibility ⅜ mile, LNAV and Circling Cat C visibility ¼ mile. Circling NA east of Rwy 17-35. Baro-VNAV and VDP NA when using Tulsa Intl altimeter setting. Helicopter visibility reduction below ¾ SM NA.

**MISSED APPROACH:**  
Climb to 3100 direct BUKDY and hold.

ASOS <b>132.675</b>	KANSAS CITY CENTER <b>128.6 282.325</b>	CTAF <b>122.825</b>
------------------------	--	------------------------



	BUKDY	HOBEB 2.4 NM to RW35	TISOY 2000	ODECU	4 NM Holding Pattern
*LNAV only.		*1.3 NM to RW35			
	1.3 NM	1.1 NM	1.5 NM	6 NM	
CATEGORY	A	B	C	D	
LPV DA		968-7/8	256 (300-7/8)		NA
LNAV/VNAV DA		1161-1 1/2	449 (500-1 1/2)		NA
LNAV MDA		1180-1	468 (500-1)	1180-1 3/8 468 (500-1 3/8)	NA
CIRCLING		1380-1	663 (700-1)	1400-2 683 (700-2)	NA

SC-1, 22 FEB 2024 to 21 MAR 2024

SC-1, 22 FEB 2024 to 21 MAR 2024

BARTLESVILLE, OKLAHOMA

AL-867 (FAA)

23194

VOR/DME BVO <b>117.9</b> Chan <b>126</b>	APP CRS <b>348°</b>	Rwy ldg <b>6201</b> TDZE <b>712</b> Apt Elev <b>717</b>
--	------------------------	---

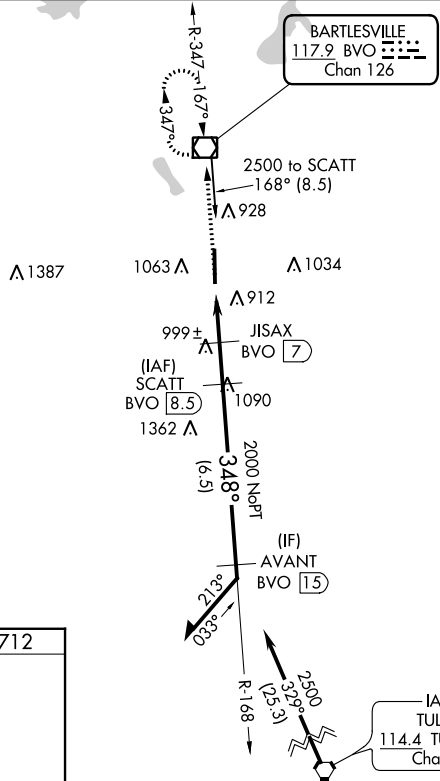
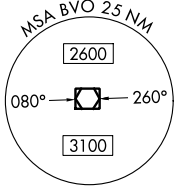
# VOR/DME RWY 35

BARTLESVILLE MUNI (BVO)

**⚠** Circling NA east of Rwy 17-35. When local altimeter setting not received, use Tulsa Intl altimeter setting and increase all MDAs 100 feet and S-35 and Circling Cat C visibility ¼ SM. VDP NA when using Tulsa Intl altimeter setting.

MISSED APPROACH: Climb to 2500 direct BVO VOR/DME and hold.

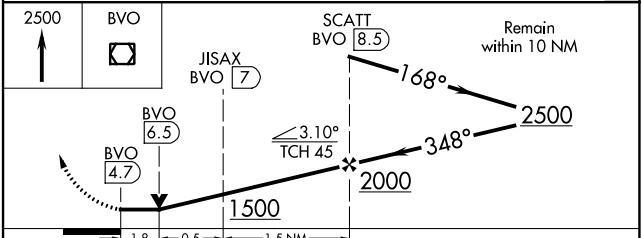
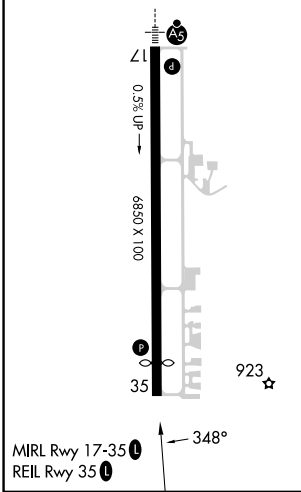
ASOS <b>132.675</b>	KANSAS CITY CENTER <b>128.6 282.325</b>	CTAF <b>122.825</b>
------------------------	--	------------------------



SC-1, 22 FEB 2024 to 21 MAR 2024

SC-1, 22 FEB 2024 to 21 MAR 2024

ELEV <b>717</b>	TDZE <b>712</b>
-----------------	-----------------



CATEGORY	A	B	C	D
S-35	1320-1	608 (700-1)	1320-1¾ 608 (700-1¾)	NA
<b>C</b> CIRCLING	1400-1	683 (700-1)	1400-2 683 (700-2)	NA

BARTLESVILLE, OKLAHOMA  
Amdt 6B 13JUL23

36°46'N-96°01'W

# BARTLESVILLE MUNI (BVO) VOR/DME RWY 35