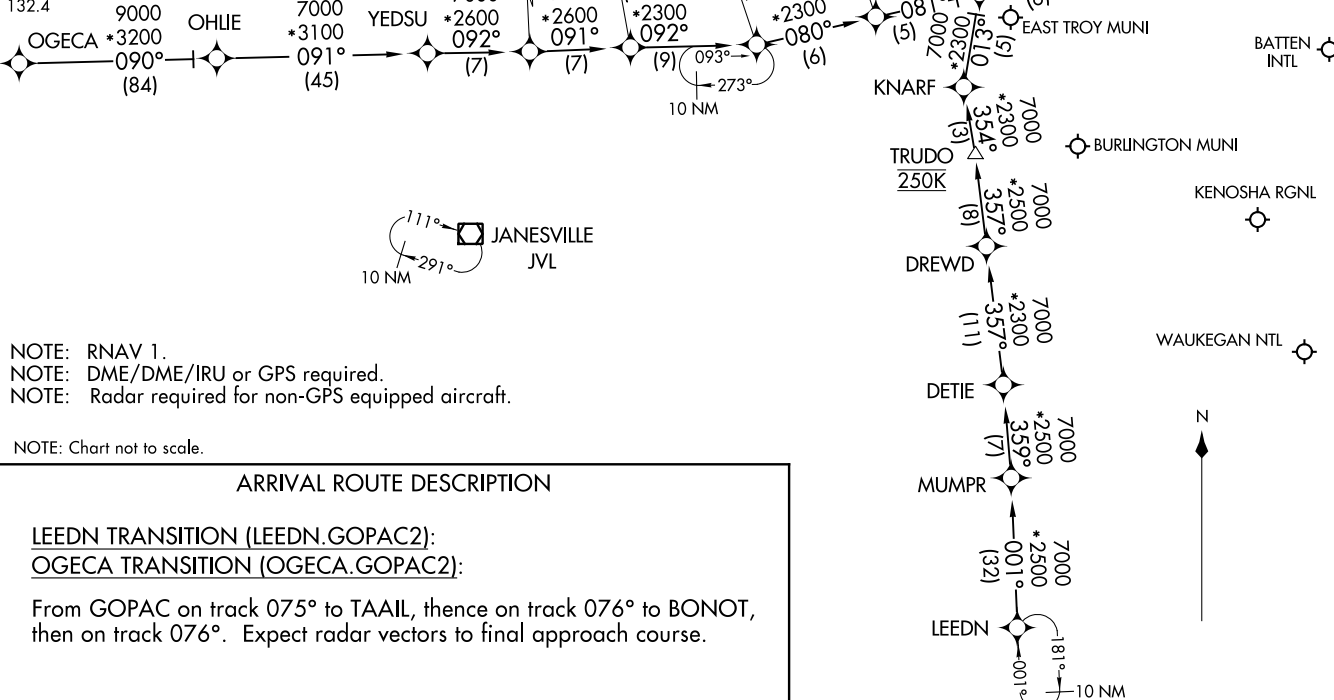


GOPAC TWO ARRIVAL (RNAV)  
 (GOPAC.GOPAC2) 07DEC17

MILWAUKEE APP CON  
 126.5 307.0  
 ENW ATIS  
 127.175  
 MKE D-ATIS  
 126.4  
 MWC ATIS  
 128.3  
 UES ATIS  
 118.875  
 UGN ATIS  
 132.4



NOTE: RNAV 1.  
 NOTE: DME/DME/IRU or GPS required.  
 NOTE: Radar required for non-GPS equipped aircraft.

NOTE: Chart not to scale.

ARRIVAL ROUTE DESCRIPTION

LEEDN TRANSITION (LEEDN.GOPAC2):  
OGECA TRANSITION (OGECA.GOPAC2):

From GOPAC on track 075° to TAAIL, thence on track 076° to BONOT, then on track 076°. Expect radar vectors to final approach course.

MILWAUKEE, WISCONSIN

(GOPAC.GOPAC2) 21112  
 GOPAC TWO ARRIVAL (RNAV)  
 AL-262 (FAA)  
 MILWAUKEE, WISCONSIN