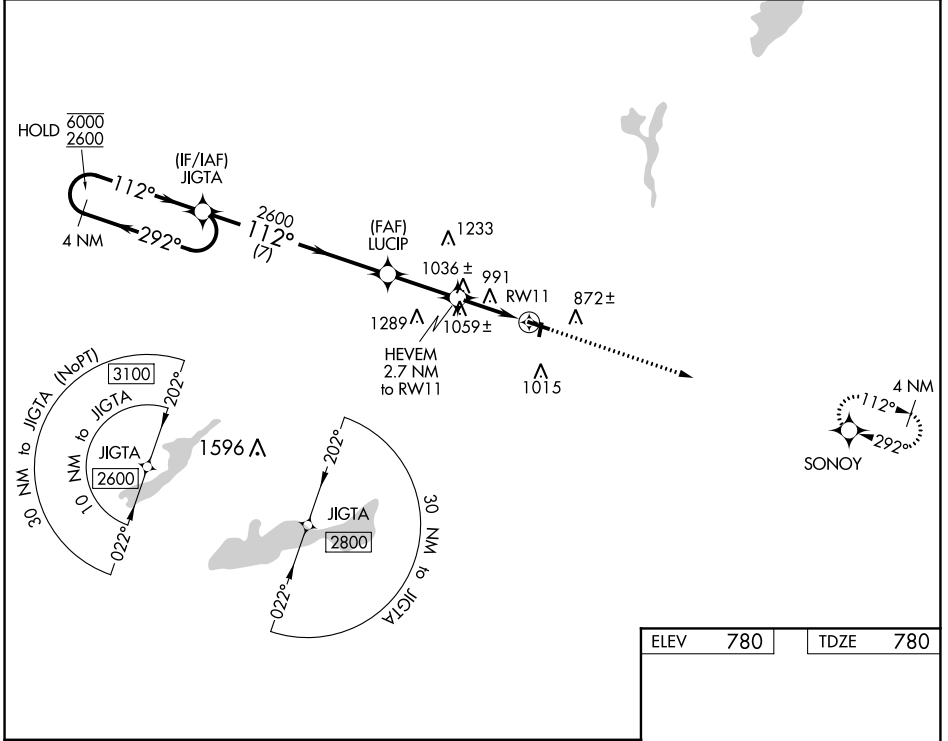


WAAS CH <b>90134</b> <b>W11A</b>	APP CRS <b>112°</b>	Rwy Idg TDZE Apt Elev	<b>4300</b> <b>780</b> <b>780</b>
--	------------------------	-----------------------------	---

# RNAV (GPS) RWY 11

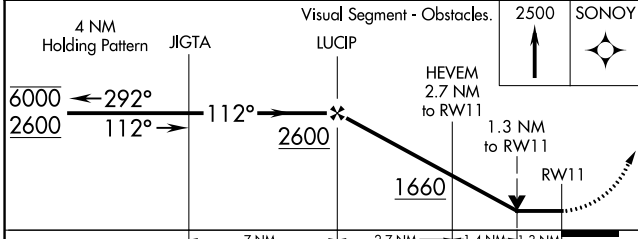
BURLINGTON MUNI (BUU)

RNP APCH - GPS.		MISSED APPROACH: Climb to 2500 direct SONOY and hold.	
<p><b>▽</b> Circling NA to Rws 1 and 19.  <b>▲</b> Rwy 11 helicopter visibility reduction below ¾ SM NA.</p>		AWOS-3 <b>125.275</b>	MILWAUKEE APP CON <b>135.875 307.0</b>
		GCO <b>121.725</b>	UNICOM <b>123.05</b> (CTAF) <b>📞</b>

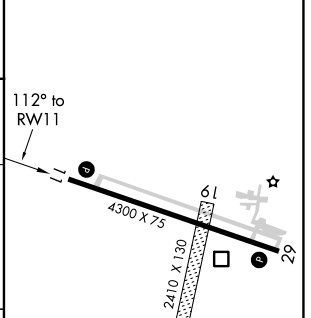


EC-3, 19 MAY 2022 to 16 JUN 2022

EC-3, 19 MAY 2022 to 16 JUN 2022



ELEV 780	TDZE 780
----------	----------



CATEGORY	A	B	C	D
LP MDA	1300-1	520 (600-1)	1300-1 <sup>3</sup> / <sub>8</sub>	520 (600-1 <sup>3</sup> / <sub>8</sub> )
LNAV MDA	1320-1	540 (600-1)	1320-1 <sup>1</sup> / <sub>2</sub>	540 (600-1 <sup>1</sup> / <sub>2</sub> )
<b>📞</b> CIRCLING	1320-1 540 (600-1)	1380-1 600 (600-1)	1380-1 <sup>1</sup> / <sub>2</sub> 600 (600-1 <sup>1</sup> / <sub>2</sub> )	1560-2 <sup>1</sup> / <sub>2</sub> 780 (800-2 <sup>1</sup> / <sub>2</sub> )

MIRL Rwy 11-29 **📞**  
REIL Rws 11 and 29 **📞**

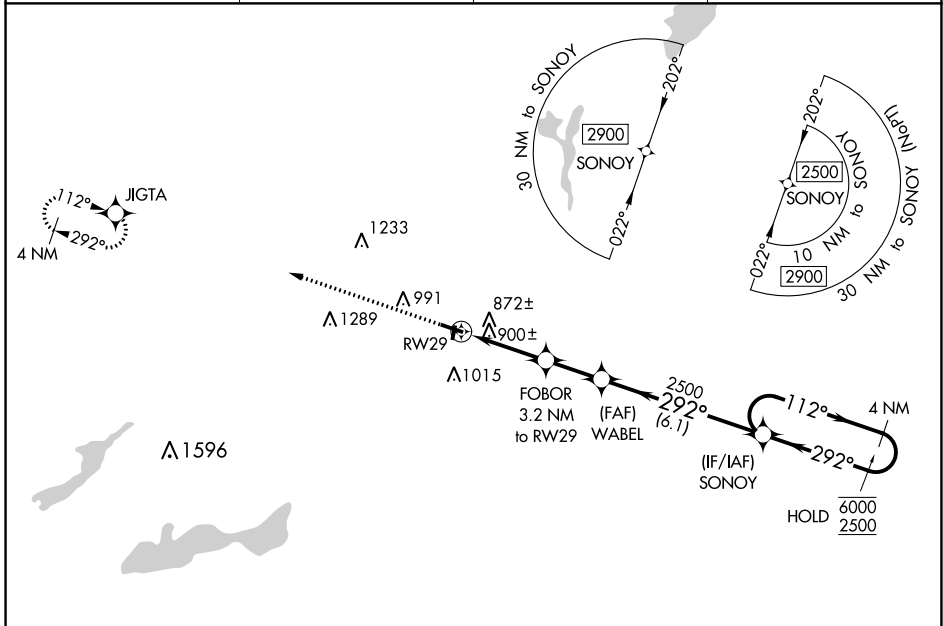
WAAS CH <b>82732</b> <b>W29A</b>	APP CRS <b>292°</b>	Rwy Idg TDZE Apt Elev	<b>4300</b> <b>780</b> <b>780</b>
--	------------------------	-----------------------------	---

# RNAV (GPS) RWY 29

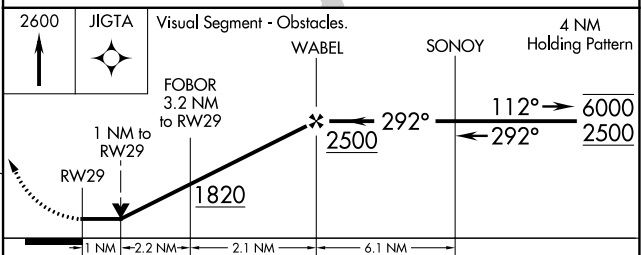
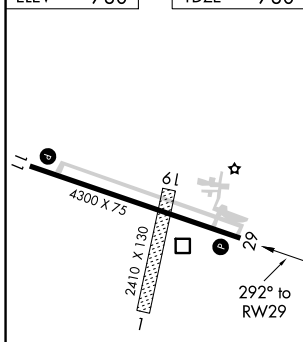
BURLINGTON MUNI (BUU)

RNP APCH - GPS.	MISSED APPROACH: Climb to 2600 direct JIGTA and hold.
<p>▼ Circling NA to Rwys 1 and 19.</p> <p>▲ Rwy 29 helicopter visibility reduction below ¾ SM NA.</p>	

AWOS-3 <b>125.275</b>	MILWAUKEE APP CON <b>135.875 307.0</b>	GCO <b>121.725</b>	UNICOM <b>123.05</b> (CTAF) <b>1</b>
--------------------------	---	-----------------------	---



ELEV	<b>780</b>	TDZE	<b>780</b>
------	------------	------	------------



CATEGORY	A	B	C	D
LP MDA	1160-1 380 (400-1)			
LNAV MDA	1280-1	500 (500-1)	1280-1⅓	500 (500-1⅓)
<b>C</b> CIRCLING	1300-1 520 (600-1)	1380-1 600 (600-1)	1380-1½ 600 (600-1½)	1560-2½ 780 (800-2½)

EC-3, 19 MAY 2022 to 16 JUN 2022

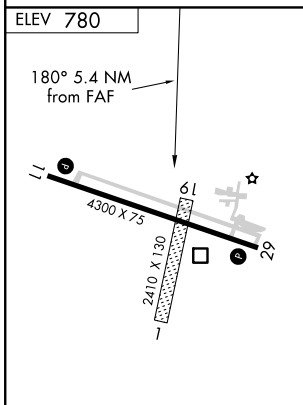
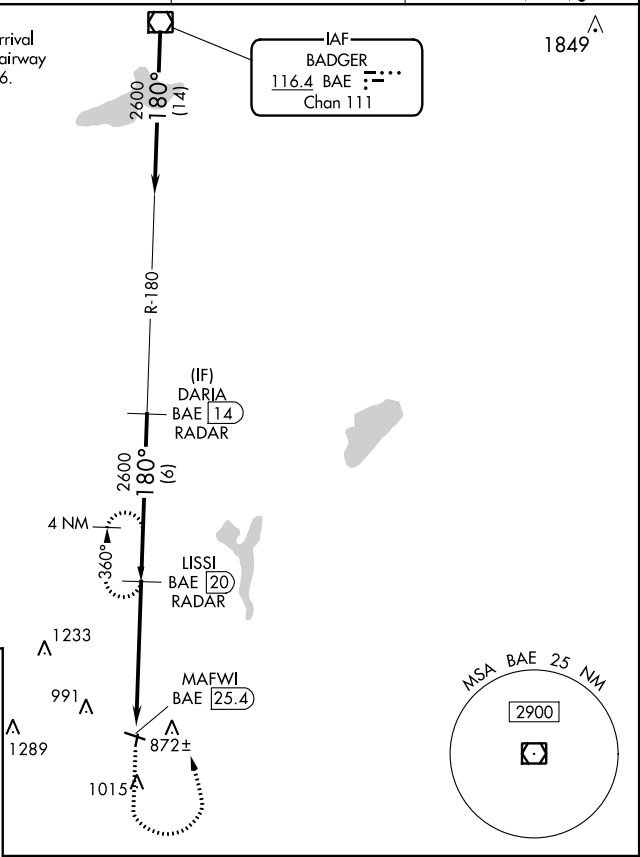
EC-3, 19 MAY 2022 to 16 JUN 2022

VOR/DME BAE	APP CRS	Rwy ldg TDZE	N/A
<b>116.4</b>	<b>180°</b>		<b>N/A</b>
Chan <b>111</b>		Apt Elev	<b>780</b>

**VOR-A**  
BURLINGTON MUNI (BUU)

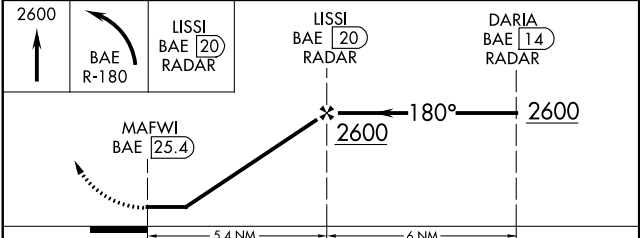
DME or RADAR required.		MISSED APPROACH: Climb to 2600 then left turn on BAE VOR/DME R-180 to LISSI/20 DME/RADAR and hold.	
Circling NA to Rwys 1 and 19.		AWOS-3 <b>125.275</b>	MILWAUKEE APP CON <b>135.875 307.0</b>
		GCO <b>121.725</b>	UNICOM <b>123.05</b> (CTAF) <b>0</b>

Procedure NA for arrival on BAE VOR/DME airway radials 119 CW 226.



MIRL Rwy 11-29 **0**  
REIL Rwys 11 and 29 **0**

FAF to MAP 5.4 NM					
Knots	60	90	120	150	180
Min:Sec	5:24	3:36	2:42	2:10	1:48



CATEGORY	A	B	C	D
<b>C</b> CIRCLING	1400-1	620 (700-1)	1400-1 <sup>3</sup> / <sub>4</sub> 620 (700-1 <sup>3</sup> / <sub>4</sub> )	1560-2 <sup>1</sup> / <sub>2</sub> 780 (800-2 <sup>1</sup> / <sub>2</sub> )

EC-3, 19 MAY 2022 to 16 JUN 2022

EC-3, 19 MAY 2022 to 16 JUN 2022