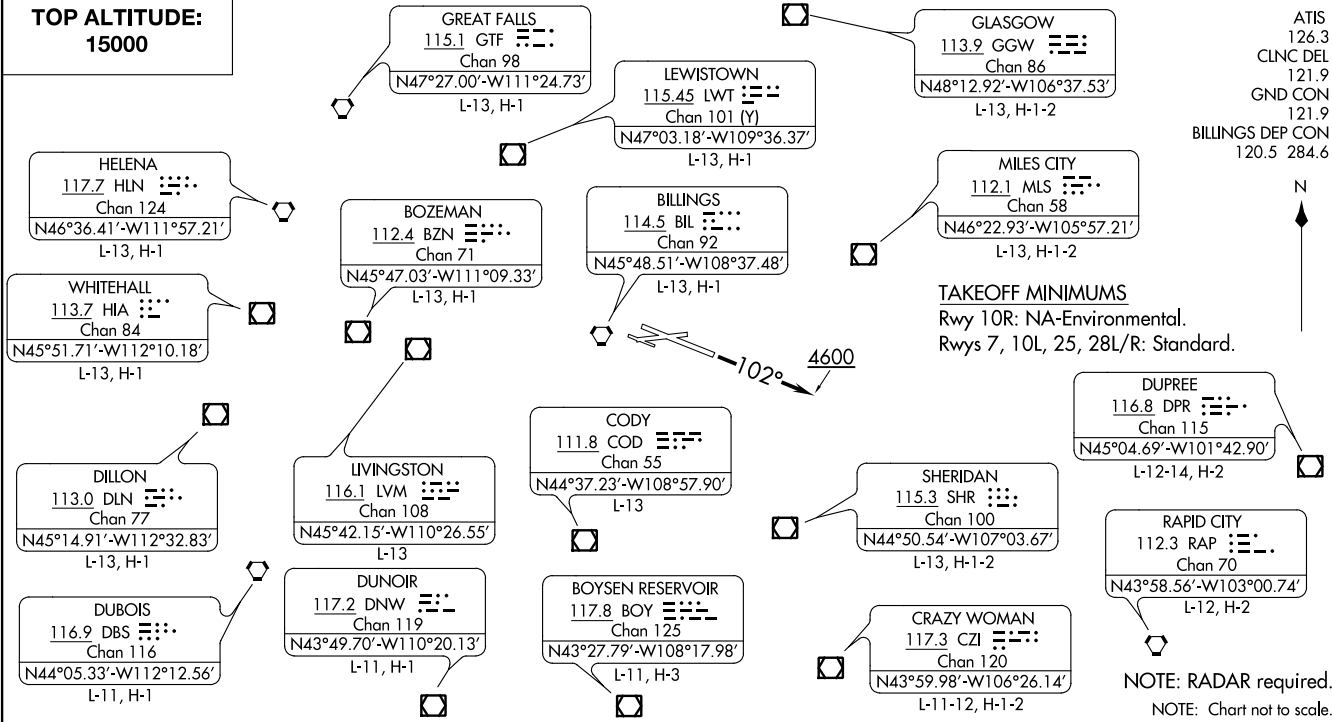


BILLINGS FIVE DEPARTURE
(BIL.5.BIL) 01FEB18

**TOP ALTITUDE:
15000**



ATIS 126.3
CLNC DEL 121.9
GND CON 121.9
BILLINGS DEP CON 120.5 284.6



DEPARTURE ROUTE DESCRIPTION

TAKEOFF RUNWAYS 7, 25, 28L/R: Climb on assigned heading for vectors to assigned fix/route, then...
TAKEOFF RUNWAY 10L: Climb heading 102° to 4600, then on assigned heading for vectors to assigned fix/route, then...
 ... maintain 15000 or assigned lower altitude. Expect clearance to filed altitude/flight level five minutes after departure.
LOST COMMUNICATIONS: If no transmissions are received for 1 minute after departure, fly last assigned heading until reaching 7000. Proceed direct BIL VORTAC, then on last routing cleared and climb to filed altitude.

BILLINGS, MONTANA
BILLINGS LOGAN INTL (BIT)

(BIL.5.BIL) 20086
BILLINGS FIVE DEPARTURE

AL-48 (FAA)

BILLINGS LOGAN INTL (BIT)
BILLINGS, MONTANA