

LOC/DME I-ULJ 111.15 Chan 48(Y)	APP CRS 293°	Rwy Idg 7011 TDZE 128 Apt Elev 132
---	------------------------	---

ILS or LOC RWY 29

LAURENCE G HANSCOM FLD (BED)

RADAR required for procedure entry. DME or RADAR required.

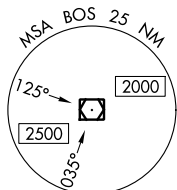
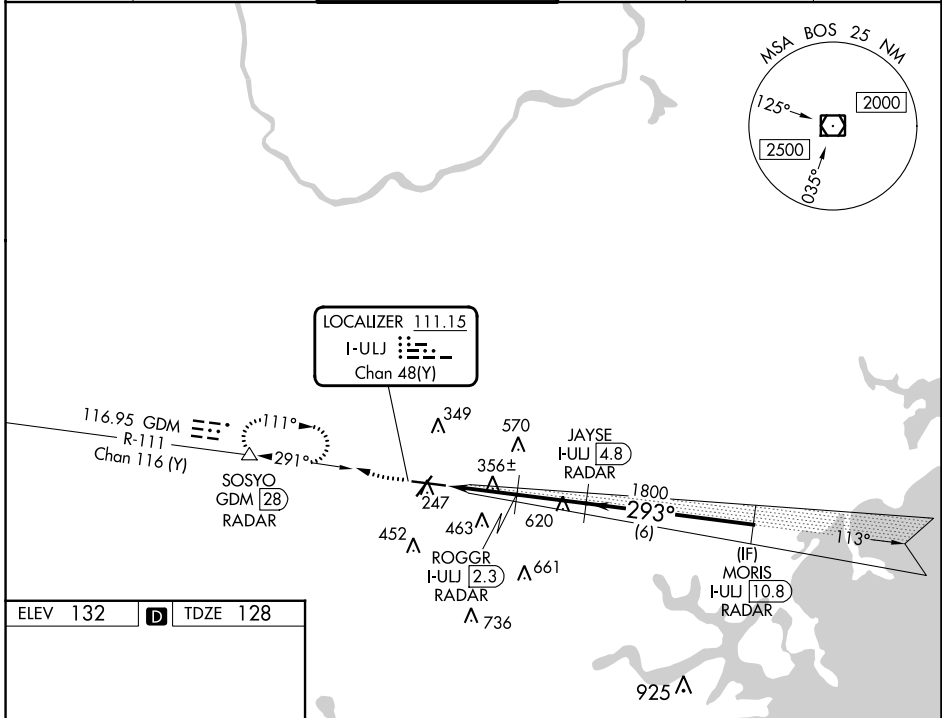
For inop ALS, increase S-LOC 29 Cats C and D to 1½ SM.

MALSR

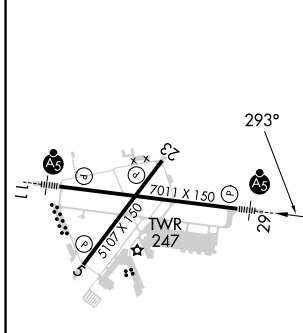


MISSED APPROACH: Climb to 1000 then climbing right turn to 2000 on GDM VOR/DME R-111 to SOSYO/GDM 28 DME/RADAR and hold.

ATIS 124.6	BOSTON APP CON 124.4 279.6	HANSCOM TOWER ★ 118.5 (CTAF) 0 257.2	GND CON 121.7	CLNC DEL 121.85	UNICOM 122.95
----------------------	--------------------------------------	--	-------------------------	---------------------------	-------------------------



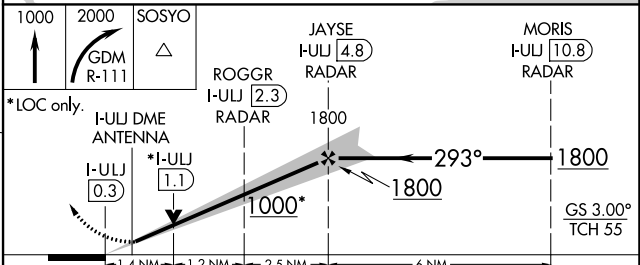
ELEV 132	D	TDZE 128
----------	----------	----------



MIRL Rwy 5-23
HIRL Rwy 11-29
REIL Rwys 5 and 23

FAF to MAP 5.1 NM

Knots	60	90	120	150	180
Min:Sec	5:06	3:24	2:33	2:02	1:42



CATEGORY	A	B	C	D
S-ILS 29	328-½		200 (200-½)	
S-LOC 29	620-½ 492 (500-½)		620-1 492 (500-1)	
C CIRCLING	720-1 588 (600-1)		880-2¼ 920-2½ 748 (800-2¼) 788 (800-2½)	

NE-1, 22 FEB 2024 to 21 MAR 2024

NE-1, 22 FEB 2024 to 21 MAR 2024

APP CRS	Rwy Idg	5107
233°	TDZE	128
	Apt Elev	132

RNAV (GPS) RWY 23

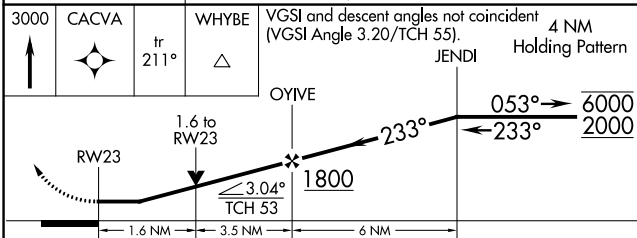
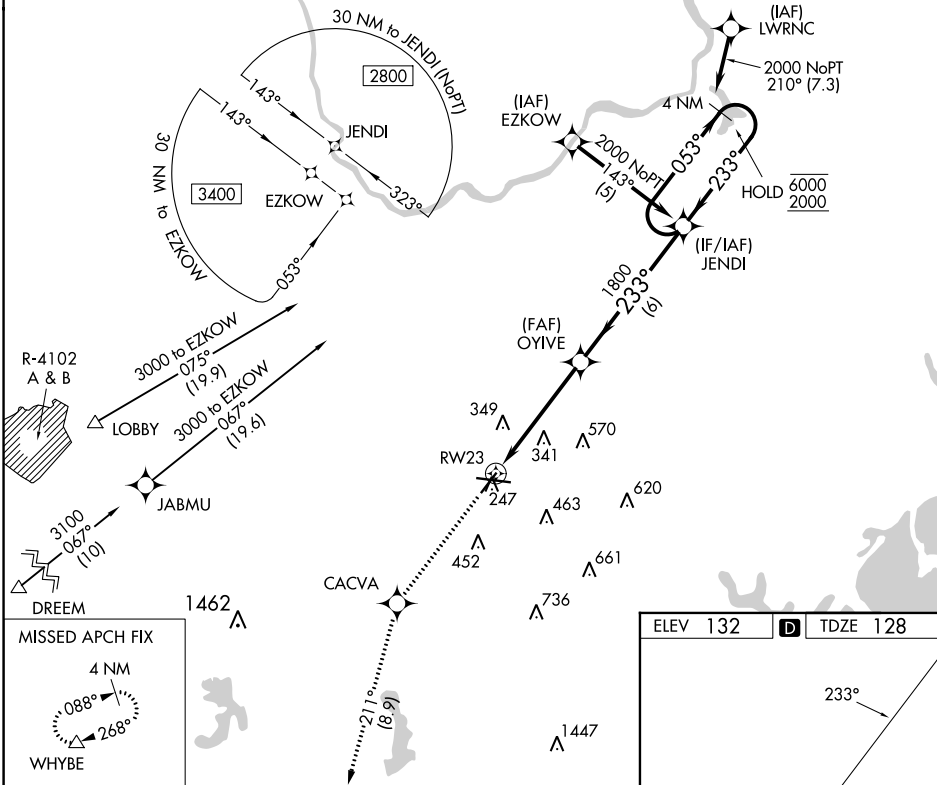
LAURENCE G HANSCOM FLD (BED)

RNP APCH - GPS.

⚠ Rwy 23 helicopter visibility reduction below 3/4 SM NA.

MISSED APPROACH: Climb to 3000 direct CACVA and on track 211° to WHYBE and hold.

ATIS 124.6	BOSTON APP CON 124.4 279.6	HANSCOM TOWER ★ 118.5 (CTAF) 257.2	GND CON 121.7	CLNC DEL 121.85	UNICOM 122.95
----------------------	--------------------------------------	--	-------------------------	---------------------------	-------------------------



ELEV 132	D	TDZE 128
----------	----------	----------

MIRL Rwy 5-23
HIRL Rwy 11-29
REIL Rws 5 and 23

CATEGORY	A	B	C	D
LNAV MDA	640-1	512 (600-1)	640-1 3/8	512 (600-1 3/8)
C CIRCLING	740-1 608 (700-1)	800-1 668 (700-1)	880-2 1/4 748 (800-2 1/4)	920-2 1/2 788 (800-2 1/2)

NE-1, 22 FEB 2024 to 21 MAR 2024

NE-1, 22 FEB 2024 to 21 MAR 2024

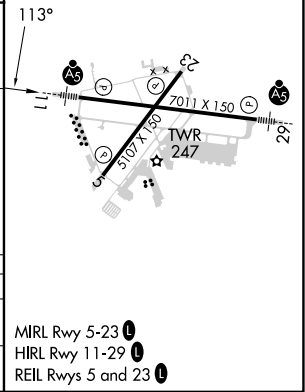
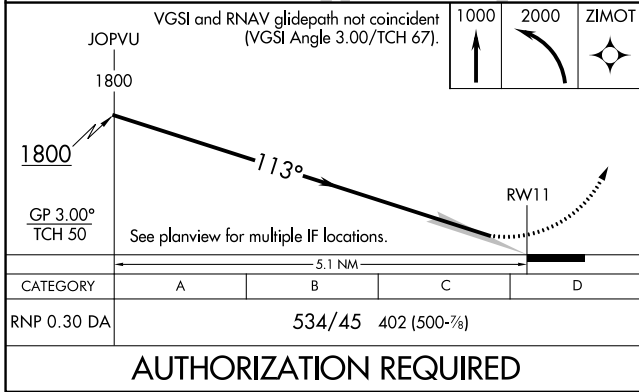
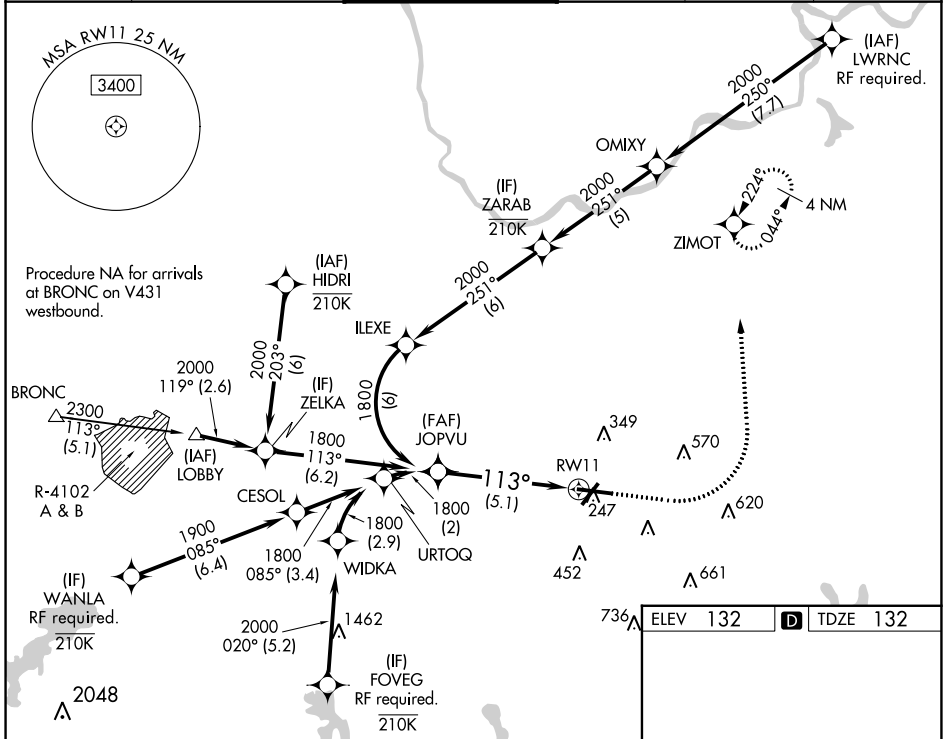
APP CRS 113°	Rwy Idg TDZE Apt Elev	7011 132 132
------------------------	-----------------------------	---

RNAV (RNP) Y RWY 11

LAURENCE G HANSCOM FLD (BED)

RNP AR APCH.		MALSR	MISSED APPROACH: Climb to 1000 then climbing left turn to 2000 direct ZIMOT and hold.	
For uncompensated Baro-VNAV systems, procedure NA below -19°C or above 54°C. For inop ALS, increase RNP 0.30 all Cats visibility to 1 1/2 SM.				

ATIS 124.6	BOSTON APP CON 124.4 279.6	HANSCOM TOWER ★ 118.5 (CTAF) 0 257.2	GND CON 121.7	CLNC DEL 121.85	UNICOM 122.95
----------------------	--------------------------------------	--	-------------------------	---------------------------	-------------------------



AUTHORIZATION REQUIRED

NE-1, 22 FEB 2024 to 21 MAR 2024

NE-1, 22 FEB 2024 to 21 MAR 2024

MIRL Rwy 5-23
HIRL Rwy 11-29
REIL Rws 5 and 23

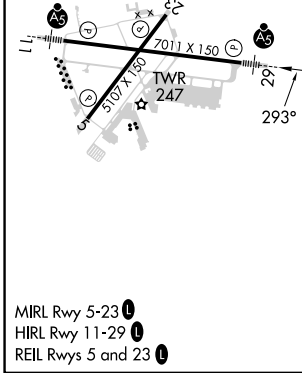
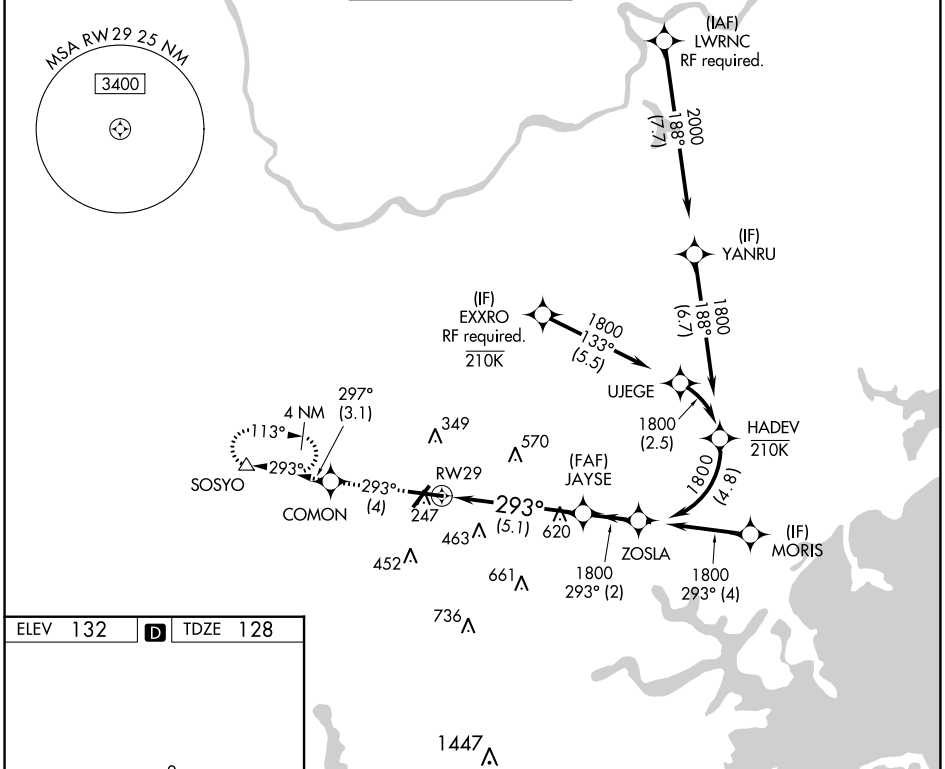
APP CRS	Rwy Idg	7011
293°	TDZE	128
	Apt Elev	132

RNAV (RNP) Y RWY 29

LAURENCE G HANSCOM FLD (BED)

RNP AR APCH.		MALSR	MISSED APPROACH: Climb to 2000 on track 293° to COMON then on track 297° to SOSYO and hold.		
For uncompensated Baro-VNAV systems, procedure NA below -19°C or above 54°C.					

ATIS 124.6	BOSTON APP CON 124.4 279.6	HANSCOM TOWER* 118.5 (CTAF) 0 257.2	GND CON 121.7	CLNC DEL 121.85	UNICOM 122.95
----------------------	--------------------------------------	---	-------------------------	---------------------------	-------------------------



2000	↑	tr 293°	COMON	↑	tr 297°	SOSYO	See planview for multiple IF locations.
							JAYSE ZOSLA
							1800 293° 1800
							GP 3.00° TCH 55
							5.1 NM 2 NM
CATEGORY		A	B	C	D		
RNP 0.30 DA		651-1		523 (600-1)			
AUTHORIZATION REQUIRED							

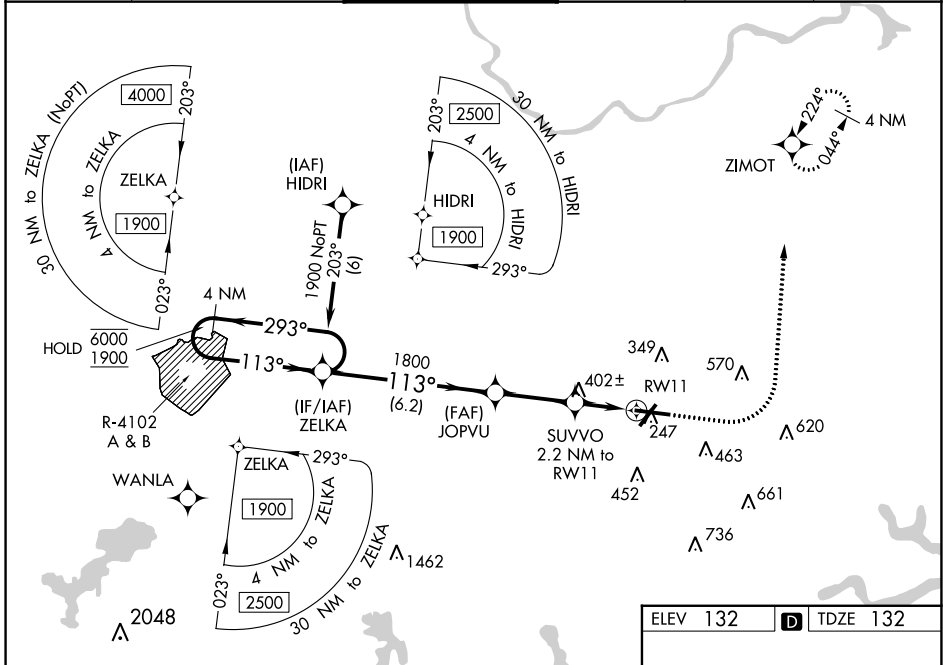
WAAS CH 87000 W11A	APP CRS 113°	Rwy Idg TDZE 132 Apt Elev 132
--	------------------------	---

RNAV (GPS) Z RWY 11

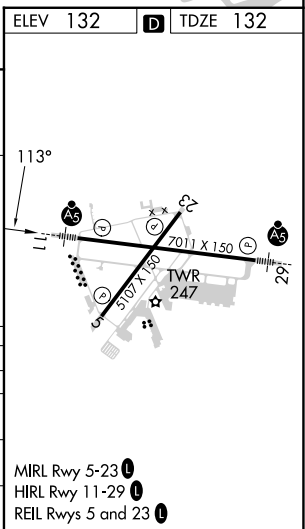
LAURENCE G HANSCOM FLD (BED)

RNP APCH-GPS.		MALSR	MISSED APPROACH: Climb to 1000 then climbing left turn to 2000 direct ZIMOT and hold.
<p>▼ For uncompensated Baro-VNAV systems, LNAV/VNAV NA below -19° C or above 54° C.</p> <p>▲ For inop ALS, increase all LNAV/VNAV Cats visibility to RVR 5500.</p>			

ATIS 124.6	BOSTON APP CON 124.4 279.6	HANSCOM TOWER ★ 118.5 (CTAF) 0 257.2	GND CON 121.7	CLNC DEL 121.85	UNICOM 122.95
----------------------	--------------------------------------	--	-------------------------	---------------------------	-------------------------



4 NM Holding Pattern		ZELKA	JOPVU	SUVVO	ZIMOT
6000 ← 293°			1800	2.2 NM to RW11	
1900 → 113°				1.5 NM to RW11	
GP 3.00° TCH 50			1800		
			880		
		6.2 NM	2.9 NM	0.7 NM	1.5 NM
CATEGORY	A	B	C	D	
LPV DA		384/24	252 (300-½)		
LNAV/VNAV DA		474/30	342 (400-¾)		
LNAV MDA	660/24	528 (600-½)	660/55	528 (600-1)	
CIRCLING	720-1	588 (600-1)	880-2¼ 748 (800-2¼)	920-2½ 788 (800-2½)	



NE-1, 22 FEB 2024 to 21 MAR 2024

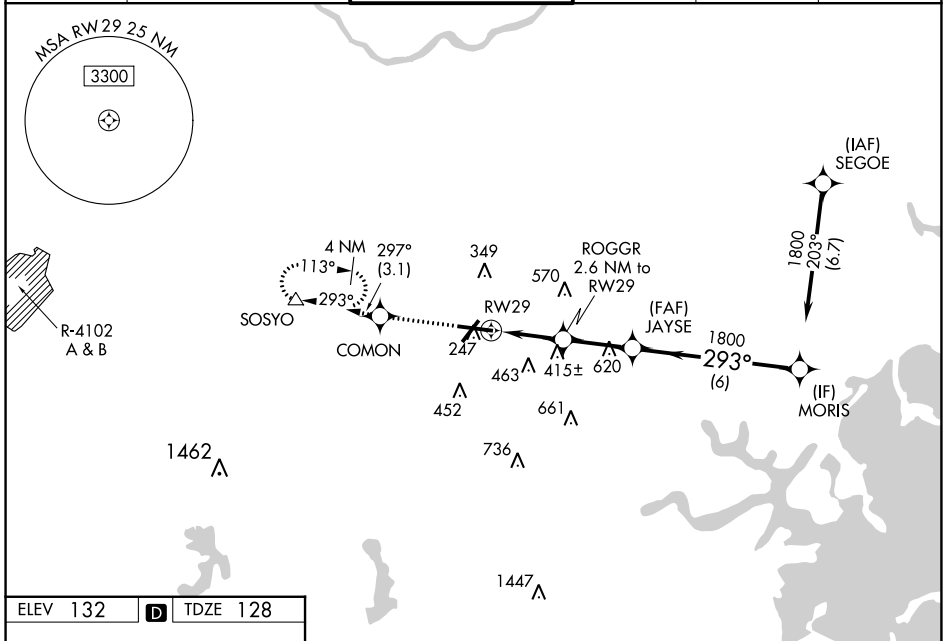
NE-1, 22 FEB 2024 to 21 MAR 2024

WAAS CH 86612 W29A	APP CRS 293°	Rwy Idg 7011 TDZE 128 Apt Elev 132
--	------------------------	---

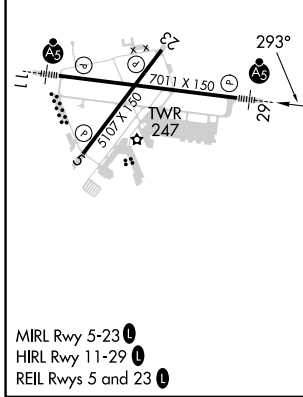
RNAV (GPS) Z RWY 29

LAURENCE G HANSCOM FLD (BED)

RNP APCH		<p>For uncompensated Baro-VNAV systems, LNAV/VNAV NA below -16°C (4°F) or above 54°C (130°F). Baro-VNAV and VDP NA with Boston altimeter setting. When local altimeter setting not received, use Boston altimeter setting; increase LPV DA to 377 feet, LNAV/VNAV DA to 663 feet; increase all MDAs 60 feet and LNAV Cats C and D, and Circling Cat D visibility ¼ SM. For inop ALS, increase LNAV/VNAV all Cats visibility and LNAV Cat C/D to 1 ½ SM. For inop ALS when using Boston altimeter setting, increase LNAV/VNAV all Cats visibility to 1 ½ SM and LNAV Cat C/D to 1 ½ SM.</p>		<p>MALSRL MISSED APPROACH: Climb to 2000 direct COMON and on track 297° to SOSYO and hold.</p>	
ATIS 124.6	BOSTON APP CON 124.4 279.6	HANSCOM TOWER ★ 118.5 (CTAF) 0 257.2	GND CON 121.7	CLNC DEL 121.85	UNICOM 122.95



ELEV 132	D	TDZE 128
----------	----------	----------



2000	COMON	tr 297°	SOSYO
*LNAV only.			
RWY 29		ROGGR 2.6 NM to RWY 29	JAYSE 1800
*1.5 NM to RWY 29		*1000	MORIS 1800
1.5 NM		1.1 NM	2.5 NM
		6 NM	
GP 3.00° TCH 55			
CATEGORY	A	B	C
LPV DA	328-½		200 (200-½)
LNAV/VNAV DA	614-1 ⅛		486 (500-1 ⅛)
LNAV MDA	640-½	512 (600-½)	640-1 512 (600-1)
C CIRCLING	720-1	588 (600-1)	880-2 ¼ 748 (800-2 ¼) 920-2 ½ 788 (800-2 ½)

NE-1, 22 FEB 2024 to 21 MAR 2024

NE-1, 22 FEB 2024 to 21 MAR 2024