

LOC/DME I-BDR 110.7 Chan 44	APP CRS 060°	Rwy Idg 4677
		TDZE 7
		Apt Elev 9

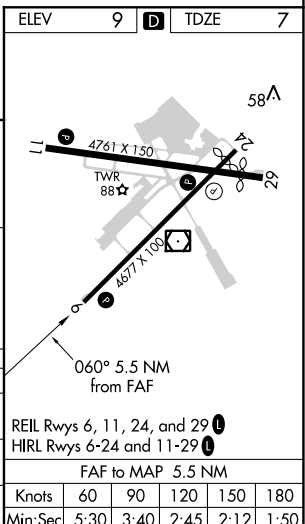
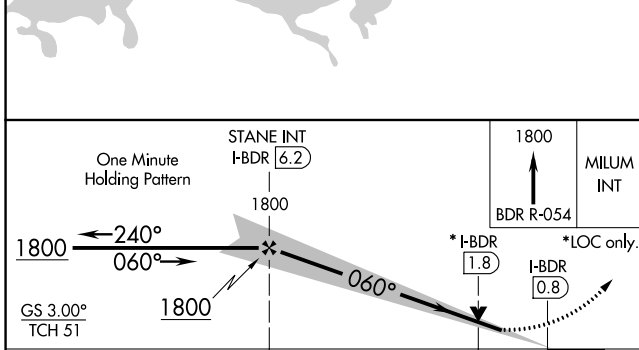
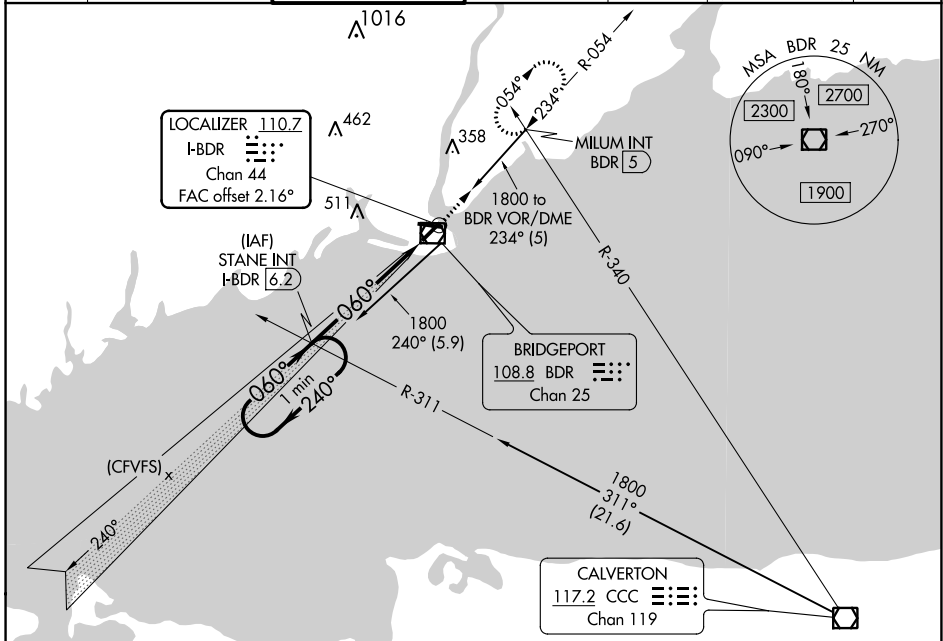
ILS or LOC RWY 6

IGOR I SIKORSKY MEMORIAL (BDR)

Autopilot coupled approach NA below 350.
When VGSI inop, Circling Rwy 11 NA at night.

MISSED APPROACH: Climb to 1800 on the BDR VOR/DME R-054 to MILUM INT and hold.

ATIS 119.15	NEW YORK APP CON 124.075 343.65	BRIDGEPORT TOWER* 120.9 (CTAF) 257.8	GND CON 121.75 257.8	CLNC DEL 121.75	CLNC DEL 124.075 (When twr closed)	UNICOM 123.0
-----------------------	---	---	--------------------------------	---------------------------	---	------------------------



CATEGORY	A	B	C	D
S-ILS 6		257- ³ / ₄	250 (300- ³ / ₄)	
S-LOC 6		380-1	373 (400-1)	
CIRCLING	480-1	620-1	820-2 ¹ / ₂	820-2 ³ / ₄
	471 (500-1)	611 (700-1)	811 (900-2 ¹ / ₂)	811 (900-2 ³ / ₄)

REIL Rwy 6, 11, 24, and 29	
HIRL Rwy 6-24 and 11-29	
FAF to MAP 5.5 NM	
Knots	60 90 120 150 180
Min:Sec	5:30 3:40 2:45 2:12 1:50

NE-1, 31 DEC 2020 to 28 JAN 2021

NE-1, 31 DEC 2020 to 28 JAN 2021

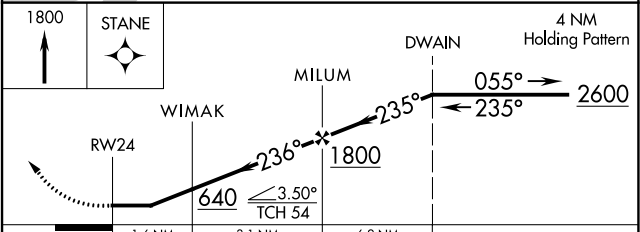
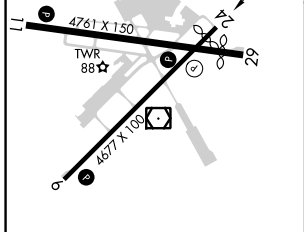
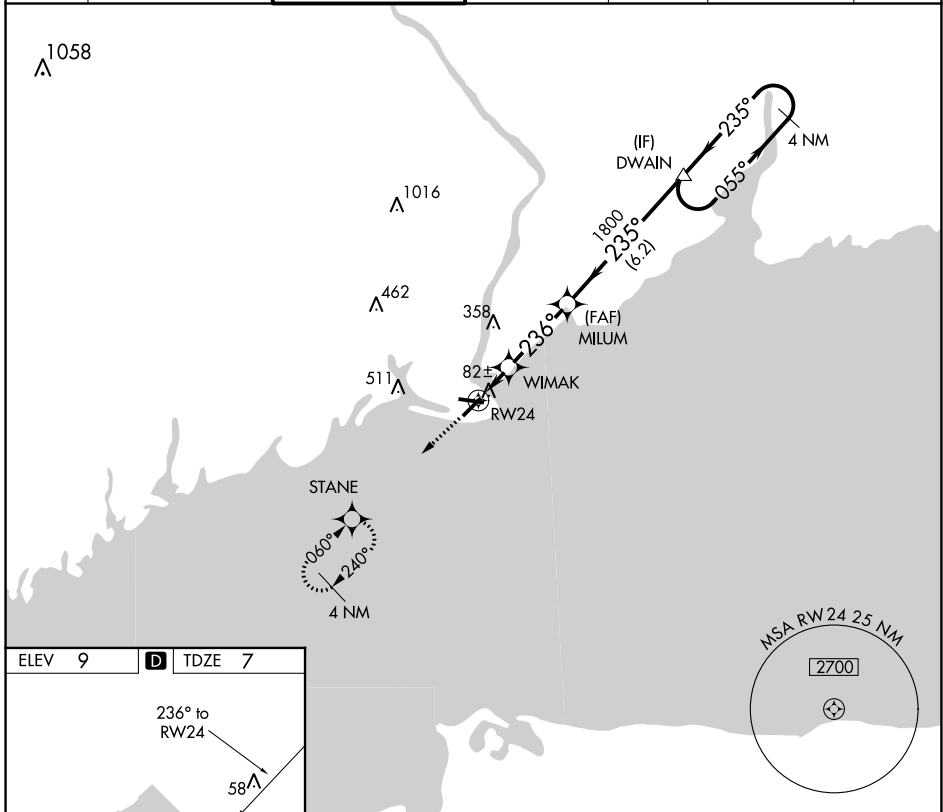
APP CRS 236°	Rwy Idg TDZE Apt Elev	4357 7 9
------------------------	-----------------------------	-------------------------------------

RNAV (GPS) RWY 24

IGOR I SIKORSKY MEMORIAL (B.D.R.)

RNP APCH.		MISSED APPROACH: Climb to 1800 direct STANE and hold.				
Rwy 24 helicopter visibility reduction below 1 SM NA. When VGSJ inop, Circling Rwy 11 NA at night.						

ATIS 119.15	NEW YORK APP CON 124.075 343.65	BRIDGEPORT TOWER* 120.9 (CTAF) 257.8	GND CON 121.75 257.8	CLNC DEL 121.75	CLNC DEL 124.075 (When twr closed)	UNICOM 123.0
-----------------------	---	---	--------------------------------	---------------------------	---	------------------------



ELEV 9	D	TDZE 7				
REIL Rwy 6, 11, 24, and 29						
HIRL Rwy 6-24 and 11-29						
CIRCLING	480-1 471 (500-1)	620-1 611 (700-1)	820-2½ 811 (900-2½)	820-2¾ 811 (900-2¾)		



NE-1, 31 DEC 2020 to 28 JAN 2021

NE-1, 31 DEC 2020 to 28 JAN 2021

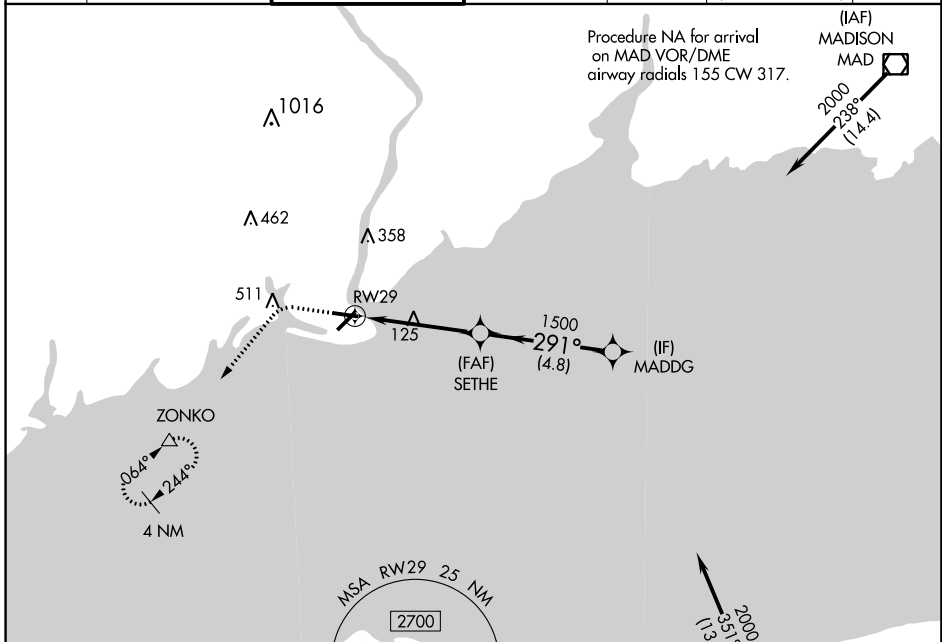
APP CRS 291°	Rwy Idg 4397
	TDZE 7
	Apt Elev 9

RNAV (GPS) RWY 29

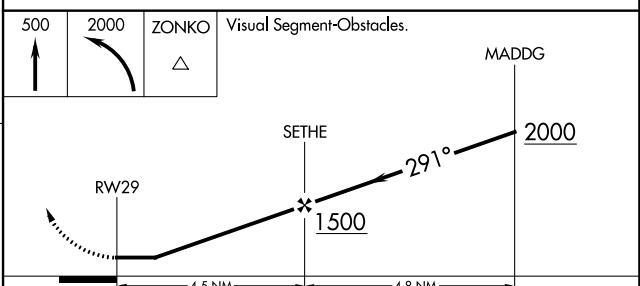
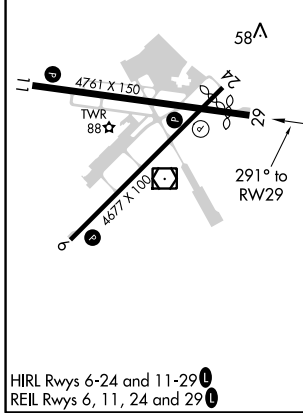
IGOR I SIKORSKY MEMORIAL (B.D.R.)


RNP APCH.		MISSED APPROACH: Climb to 500 then climbing left turn to 2000 direct ZONKO and hold.				
  Rwy 29 helicopter visibility reduction below 1 SM NA.						

ATIS 119.15	NEW YORK APP CON 124.075 343.65	BRIDGEPORT TOWER* 120.9 (CTAF) 257.8	GND CON 121.75 257.8	CLNC DEL 121.75	CLNC DEL 124.075 (When twr closed)	UNICOM 123.0
-----------------------	---	---	--------------------------------	---------------------------	---	------------------------



ELEV 9	D	TDZE 7
--------	----------	--------



CATEGORY	A	B	C	D
LNAV MDA	380-1		373 (400-1)	
 CIRCLING	480-1 471 (500-1)	620-1 611 (700-1)	820-2½ 811 (900-2½)	820-2¾ 811 (900-2¾)

NE-1, 31 DEC 2020 to 28 JAN 2021

NE-1, 31 DEC 2020 to 28 JAN 2021

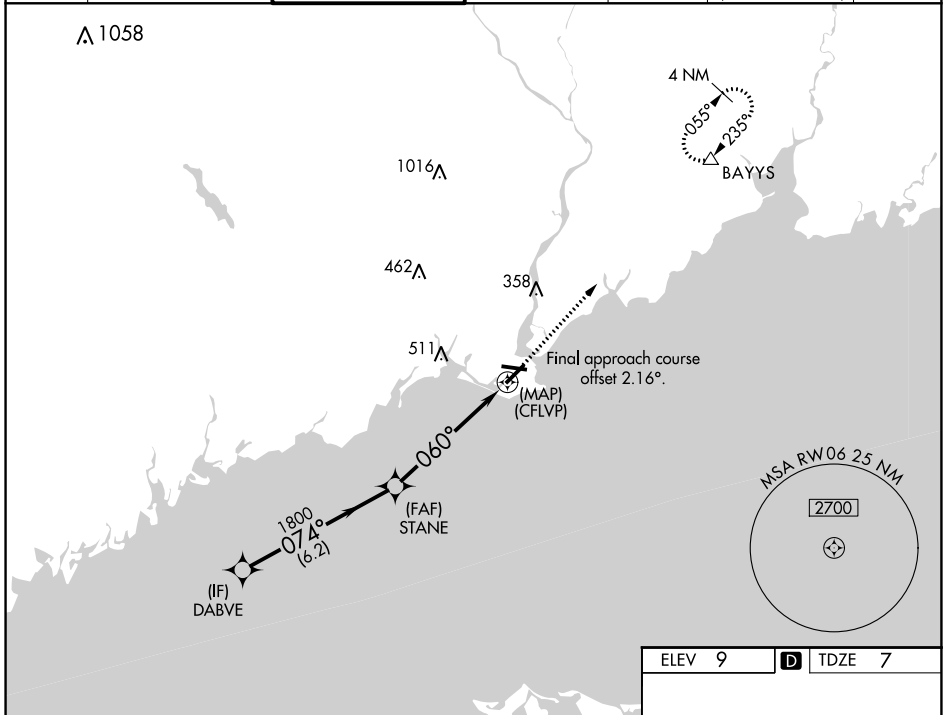
WAAS CH 78140 W06A	APP CRS 060°	Rwy Idg TDZE Apt Elev	4677 7 9
--	------------------------	-----------------------------	-------------------------------------

RNAV (GPS) RWY 6

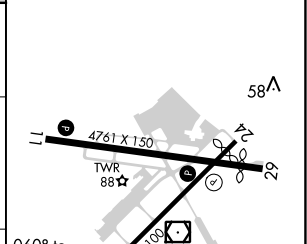
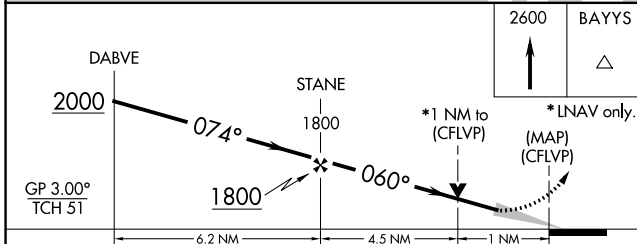
IGOR I SIKORSKY MEMORIAL (BDR)

RNP APCH.				MISSED APPROACH: Climb to 2600 direct BAYYS and hold.		
When VGSB inop, Circling Rwy 11 NA at night. For uncompensated Baro-VNAV systems, LNAV/VNAV NA below -15°C (5°F) or above 54°C (130°F).						

ATIS 119.15	NEW YORK APP CON 124.075 343.65	BRIDGEPORT TOWER* 120.9 (CTAF) 257.8	GND CON 121.75 257.8	CLNC DEL 121.75	CLNC DEL 124.075 (When twr closed)	UNICOM 123.0
-----------------------	---	---	--------------------------------	---------------------------	---	------------------------



ELEV 9	D TDZE 7
--------	-----------------



CATEGORY	A	B	C	D
LPV DA		257-3/4	250 (300-3/4)	
LNAV/VNAV DA		273-7/8	266 (300-7/8)	
LNAV MDA		380-1	373 (400-1)	
CIRCLING	480-1 471 (500-1)	620-1 611 (700-1)	820-2 1/2 811 (900-2 1/2)	820-2 3/4 811 (900-2 3/4)

REIL Rws 6, 11, 24, and 29
HIRL Rws 6-24 and 11-29

NE-1, 31 DEC 2020 to 28 JAN 2021

NE-1, 31 DEC 2020 to 28 JAN 2021