

APP CRS Rwy Idg **3998**
 267° TDZE **320**
 Apt Elev **321**

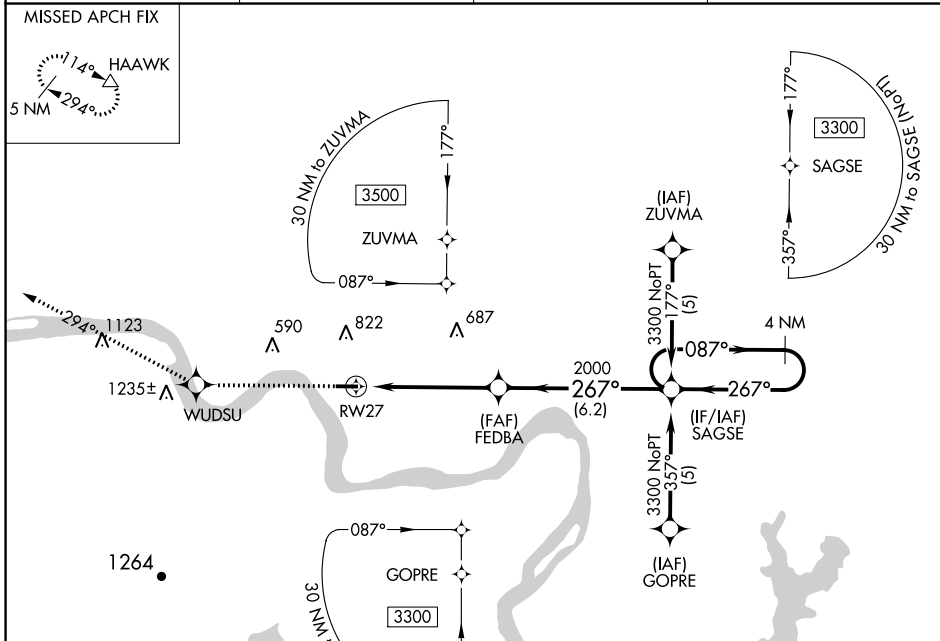
RNAV (GPS) RWY 27

MORRILTON MUNI (BDQ)

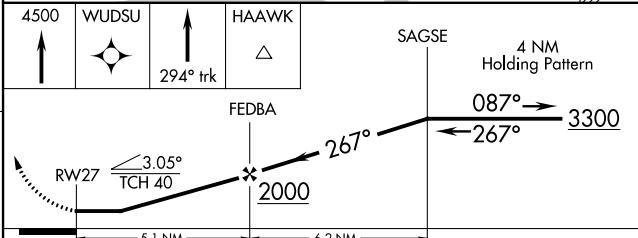
RNP APCH-GPS.
 Use Russellville altimeter setting; when not received, use Little Rock altimeter setting.

MISSED APPROACH: Climb to 4500 direct WUDSU and via 294° track to HAAWK and hold.

RUE AWOS 132.475	MEMPHIS CENTER 128.475 377.15	UNICOM 122.8 (CTAF)	122.9
----------------------------	---	-------------------------------	--------------



ELEV 321 TDZE 320



CATEGORY	A	B	C	D
LNAV MDA	1060-1	740 (800-1)	NA	
CIRCLING	1060-1 739 (800-1)	1260-1¼ 939 (1000-1¼)	NA	

SC-1, 22 FEB 2024 to 21 MAR 2024

SC-1, 22 FEB 2024 to 21 MAR 2024