

# TUXXI THREE ARRIVAL

WEST PALM BEACH, FLORIDA

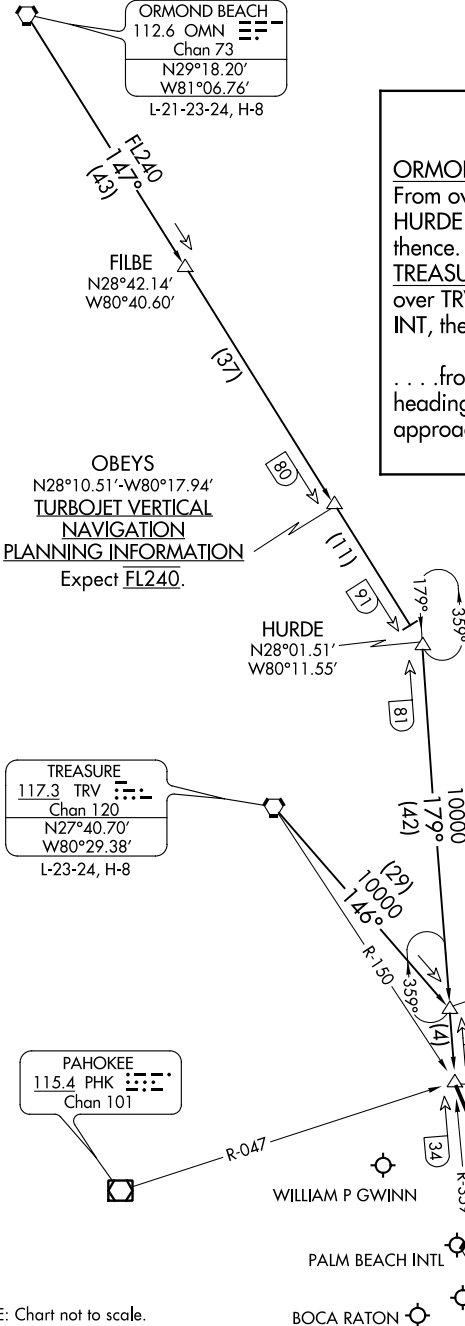
PALM BEACH APP CON  
128.3 317.4  
PALM BEACH INTL D-ATIS  
123.75

**ARRIVAL ROUTE DESCRIPTION**

**ORMOND BEACH TRANSITION (OMN.TUXXI3):**  
From over OMN VORTAC on OMN R-147 to HURDE INT, then on PBI R-359 to STOOP INT, thence. . . .

**TREASURE TRANSITION (TRV.TUXXI3):**  
From over TRV VORTAC on TRV R-146 to TUXXI INT, then on PBI R-359 to STOOP INT, thence. . . .

. . . .from over STOOP INT, depart STOOP INT heading 160° and expect RADAR vectors to final approach course.



**OBEYS**  
N28°10.51'-W80°17.94'  
**TURBOJET VERTICAL NAVIGATION**  
**PLANNING INFORMATION**  
Expect FL240.

NOTE: DME required.  
NOTE: Turbojets and Turboprops only.

**TREASURE**  
117.3 TRV  
Chan 120  
N27°40.70'  
W80°29.38'  
L-23-24, H-8

**TUXXI**  
N27°19.08'-W80°08.19'  
**TURBOJET VERTICAL NAVIGATION**  
**PLANNING INFORMATION**  
Expect 10000 and 250K.

**PAHOKEE**  
115.4 PHK  
Chan 101

**STOOP**  
N27°15.19'  
W80°07.88'

**PALM BEACH**  
115.7 PBI  
Chan 104  
N26°40.80'  
W80°05.19'

NOTE: Chart not to scale.

SE-3, 26 MAR 2020 to 23 APR 2020

SE-3, 26 MAR 2020 to 23 APR 2020

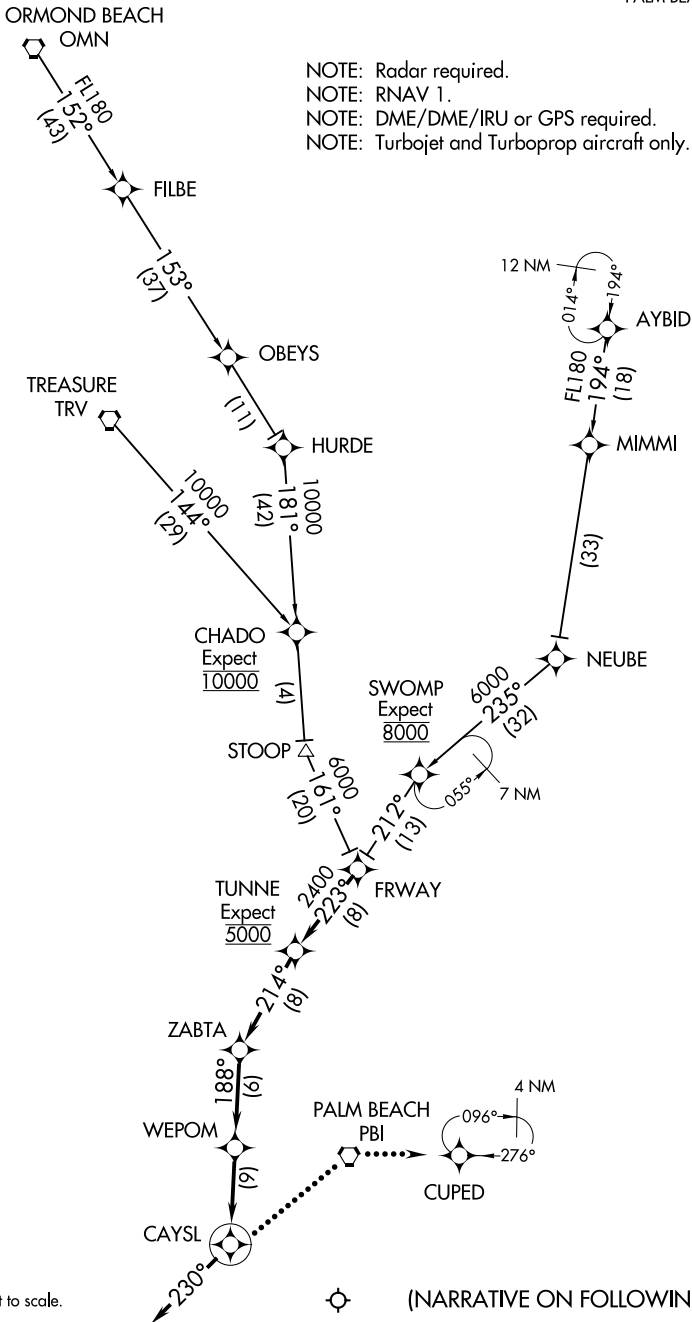
# TUXXI THREE ARRIVAL

WEST PALM BEACH, FLORIDA

# CAYSL FOUR ARRIVAL (RNAV)

PALM BEACH APP CON  
125.2 343.6

- NOTE: Radar required.
- NOTE: RNAV 1.
- NOTE: DME/DME/IRU or GPS required.
- NOTE: Turbojet and Turboprop aircraft only.



SE-3, 26 MAR 2020 to 23 APR 2020

SE-3, 26 MAR 2020 to 23 APR 2020

NOTE: Chart not to scale.



(NARRATIVE ON FOLLOWING PAGE)

# CAYSL FOUR ARRIVAL (RNAV)

## ARRIVAL ROUTE DESCRIPTION

AYBID TRANSITION (AYBID.CAYSL4)

ORMOND BEACH TRANSITION (OMN.CAYSL4)

TREASURE TRANSITION (TRV.CAYSL4)

From FRWAY track 223° to TUNNE, then on track 214° to ZABTA.

Landing Rwy 5: From ZABTA on track 188° to WEPOM, then on track 188° to CAYSL, then on 230° heading or as assigned by ATC.

Expect radar vectors to final approach course.

Landing Rwy 23: From ZABTA on track 188° to WEPOM.

Expect RNAV (RNP) Z Rwy 23 approach, or radar vectors to final approach course.

LOST COMMUNICATIONS: From over CAYSL, left turn direct PBI VORTAC, then direct CUPED and hold. Maintain 3000.

SE-3, 26 MAR 2020 to 23 APR 2020

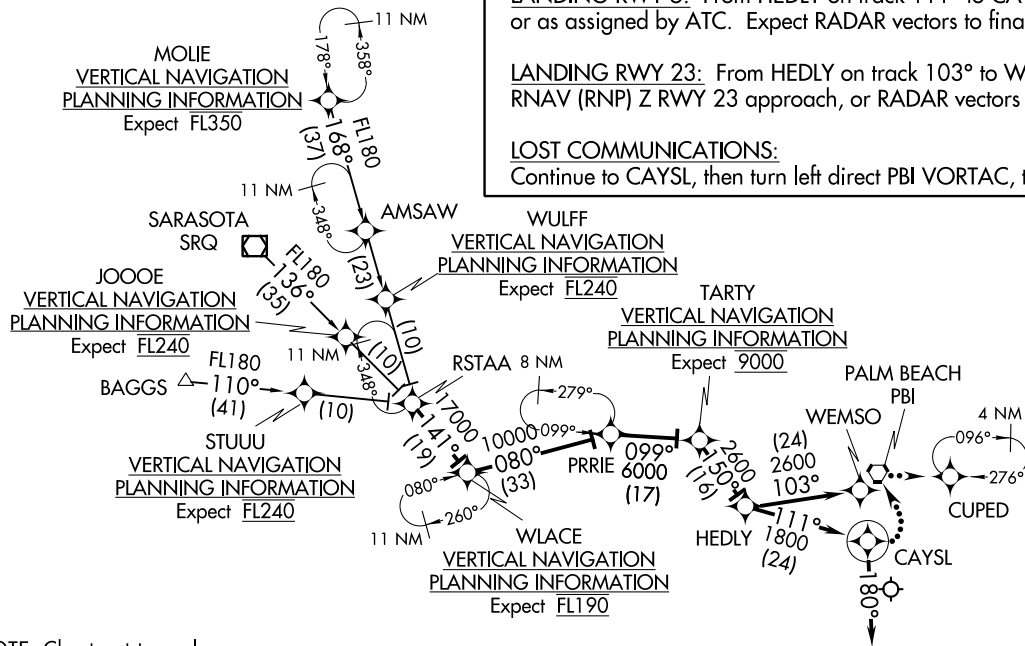
SE-3, 26 MAR 2020 to 23 APR 2020

PRRIE FIVE ARRIVAL (RNAV)  
(RSTAA, PRRIE5) 13SEP18

BOCA RATON, FLORIDA  
BOCA RATON (BCT)

PALM BEACH INTL D-ATIS  
123.75  
PALM BEACH APP CON  
125.2 343.6

NOTE: RADAR required.  
NOTE: RNAV 1.  
NOTE: DME/DME/IRU or GPS required.  
NOTE: Turbojet and turboprop aircraft only.



NOTE: Chart not to scale.

### ARRIVAL ROUTE DESCRIPTION

BAGGS TRANSITION (BAGGS.PRRIE5)  
MOLIE TRANSITION (MOLIE.PRRIE5)  
SARASOTA TRANSITION (SRQ.PRRIE5)

From RSTAA on track 141° to WACE, then on track 080° to PRRIE, then on track 099° to TARTY, then on track 150° to HEDLY.

LANDING RWY 5: From HEDLY on track 111° to CAYSL, then on heading 180° or as assigned by ATC. Expect RADAR vectors to final approach course.

LANDING RWY 23: From HEDLY on track 103° to WEMSO. Expect RNAV (RNP) Z RWY 23 approach, or RADAR vectors to final approach course.

LOST COMMUNICATIONS:  
Continue to CAYSL, then turn left direct PBI VORTAC, then direct CUPED and hold.

(RSTAA, PRRIE5) 18256  
PRRIE FIVE ARRIVAL (RNAV)

AL-560 (FAA)

BOCA RATON (BCT)  
BOCA RATON, FLORIDA