

BOSSIER CITY, LOUISIANA

# HILLS or LOC W RWY 15

LOC I-JKC **108.9** APCH CRS **149°** Rwy Idg **11,758**  
 THR ELEV **163**  
 Appr Elev **165**

ALC-391 [USAF]

BARKSDALE AFB (KBAD)

RADAR or DME required.

\*\* When A15 Inop, increase CAT CDE RVR to 40 and vis to 3/4 mile.

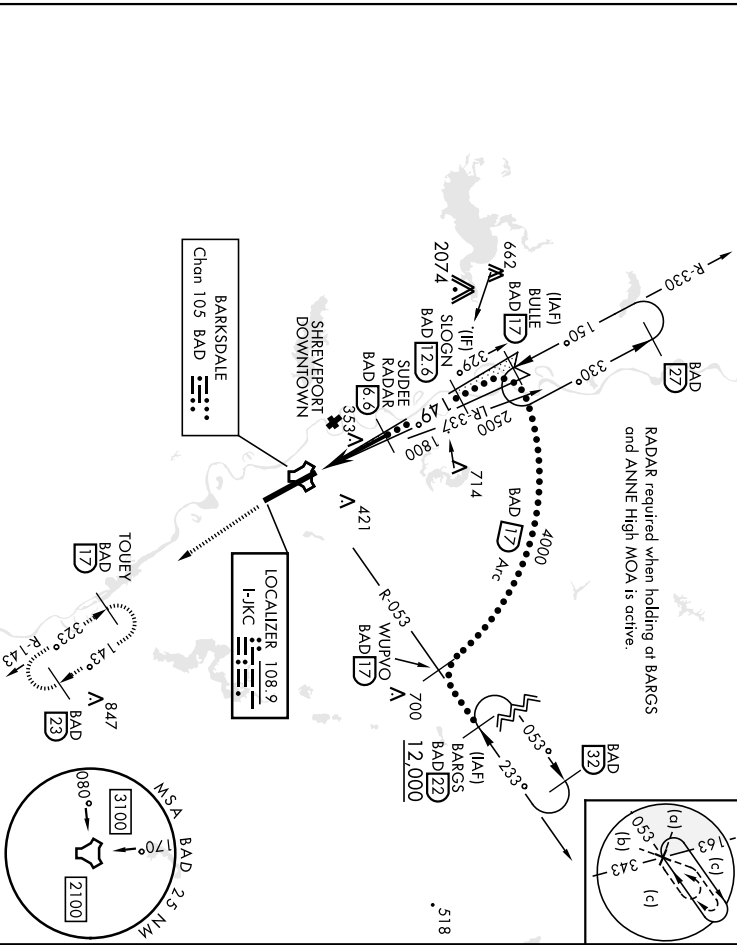
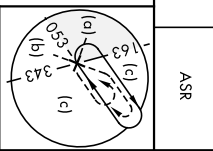
\*\*\* When A15 Inop, increase CAT CDE vis to 1 3/8 miles.

\*\*\*\* Circling not authorized W of Rwy.

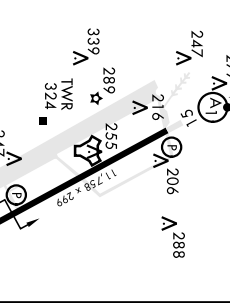
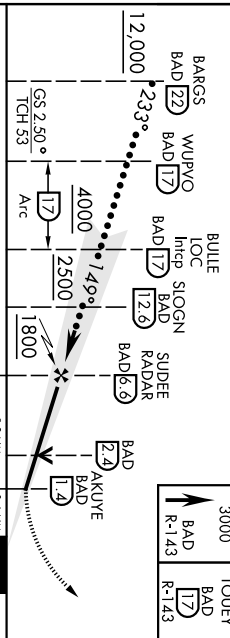
A15-F-1

MISSED APPROACH: Climb to 3000  
 via BAD R-143 direct TOUVEY and hold.

ATIS <b>307.025</b>	SHREVEPORT APP CON 320°/152° <b>123.75</b> 133°-319° <b>119.9</b>	SHREVEPORT APP CON <b>380.725</b> <b>353.95</b>	TOWER <b>128.25</b> <b>278.3</b>	GND CON <b>121.8</b> <b>253.5</b>	ASR
------------------------	---	---	-------------------------------------	--------------------------------------	-----



EMERG SAFE ALT 100 NM 3300



CATEGORY	C	D	E
S-ILS 15**	363/24	200 (200-1/2)	
S-LOC 15***	640/50	477 (500-1)	
CIRCLING	NOT AUTHORIZED	760-2	780-2 1/4
		595 (600-2)	615 (700-2 1/4)

HIRL Rwy 15-33	FAE to MAP 5.2 NM
Knots	120 140 160 180 200
Mts:Sec	2.36 2.14 1.57 1.44 1.34

BOSSIER CITY, LOUISIANA  
 Amdt 6 25JUN15  
 BARKSDALE AFB (KBAD)

# HILLS or LOC W RWY 15

LOC I-BAD	APCH CRS	Run-Ideg	THRE
<b>109.9</b>	<b>329°</b>	<b>11,758</b>	<b>161</b>
		Arpt Elev	<b>165</b>

AL-391 [USAF]

BARKSDALE AFB (KBAD)

DME or RADAR required.

ALSF-1  

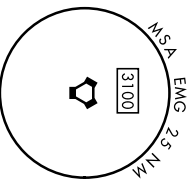
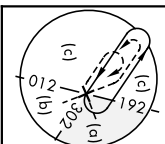

MISSED APPROACH: Climb to 3100  
 direct to EIC VORTAC and hold.

ATIS	SHREVEPORT APP CON	TOWER	GND CON	ASR
<b>307.025</b>	320°-1.52° 153°-319°	<b>128.25 278.3</b>	<b>121.8 253.5</b>	
	<b>123.75 360.725</b>			
	<b>119.9 335.55</b>			

\*\* When ALS Inop, increase CAT DDE RVR to 40 and vis to 3/4 mile.  
 \*\* When ALS Inop, increase CAT DDE RVR to 60 and vis to 1/2 miles.  
 \*\*\* Circling not authorized W of Rwy.

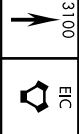
CAUTION: Gildstope unreliable  
 inside DH.

CAUTION: Localizer unusable for  
 COUPLED approaches below 394.

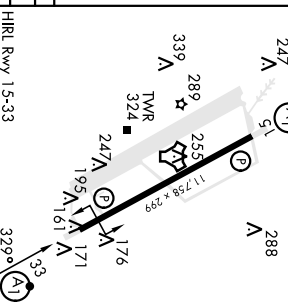
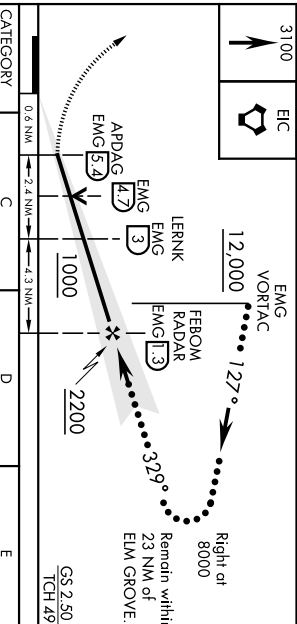


EMERG SAFE ALT 100 NM 3300

ELEV	165	THRE	161
------	-----	------	-----



3100



CATEGORY	C	D	E	
SLIS 33**	361/24	200	(200-1/2)	
S-LOC 33***	560/35	399	(400-3/8)	
*** CIRCLING	NOT AUTHORIZED	760-2	780-2 1/4	
		595 (600-2)	615 (700-2 1/4)	

HRIL Rwy 15-33

FAE to MAP 6.7 NM

	Knots	120	140	160	180	200
	Mins:Sec	3:21	2:52	2:31	2:14	2:01

BOSSIER CITY, LOUISIANA

32°30'N-93°40'W

BARKSDALE AFB (KBAD)

Amdt 5 25JUN15

HILLS or LOC Y RWY 33

LOC I-BAD	APCH CRS	Rwy Idg	11,758
109.9	329°	THRE	161
		Appt Elev	165

ALC-391 [USAF]

RADAR or DME required.  
 \*\*When AIS Inop, increase CAT CDE RVR to 40 and vis to 1/8 mile.  
 \*\*\*When AIS Inop, increase CAT CDE RVR to 60 and vis to 1/8 miles.  
 \*\*\*Circling not authorized W of Rwy.

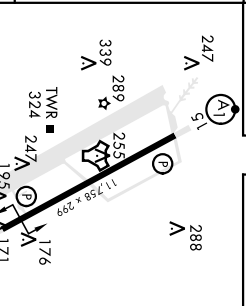
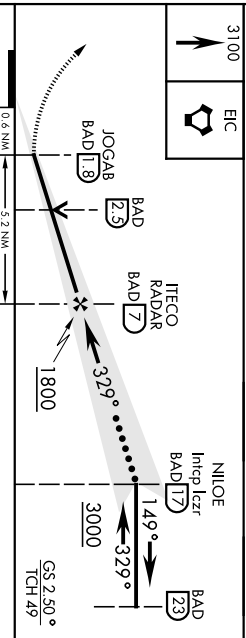
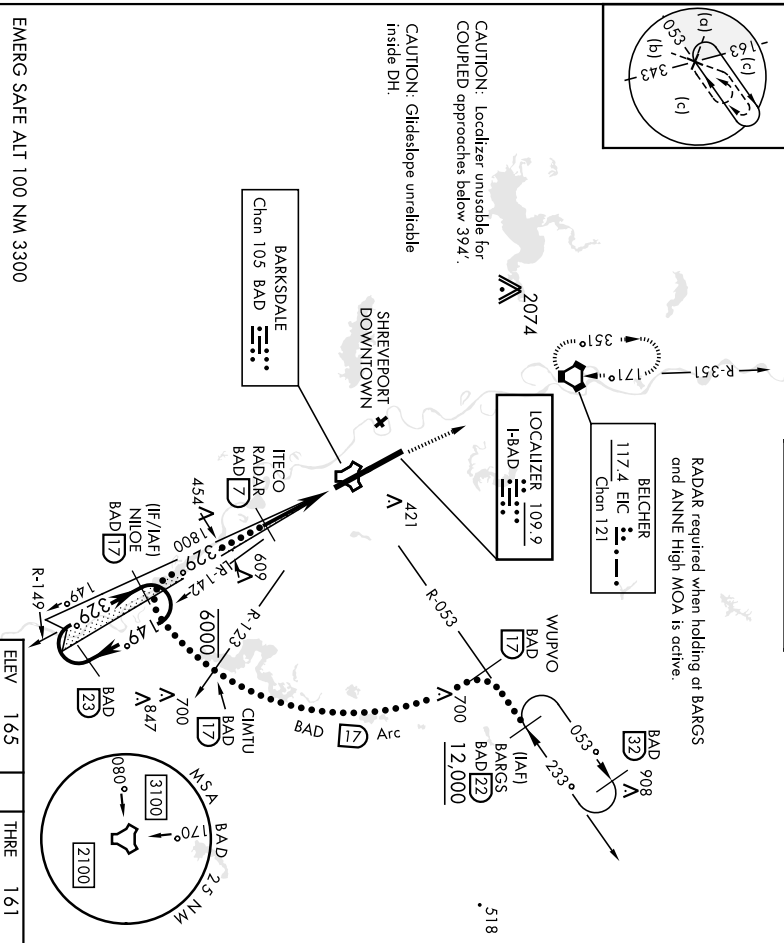
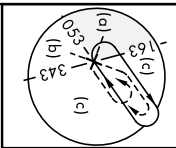
AISF-1

MISSED APPROACH: Climb to 3100  
 direct to EIC VORTAC and hold.

BARSDALE AFB (KBAD)

ATIS	SHREVEPORT APP CON	TOWER
307.025	320°+152° 123.75 380.725 133°-319° 119.9 335.55	128.25 278.3

GND CON	ASR
121.8 253.5	



CATEGORY	C	D	E
S-ILS 33*	361/224	200 (200-1/2)	
S-ILOC 33**	560/35	399 (400-3/8)	
CIRCLING***	NOT AUTHORIZED	760-2 595 (600-2)	780-2 1/4 615 (700-2 1/4)
BOSSIER CITY, LOUISIANA			
32°30'N-93°40'W			
HIRL Rwy 15-33			
FAF to MAP 5.3 NM			
Knots	120	140	160 180 200
Mins:Sec	2:36	2:14	1:57 1:44 1:34

Amch 5 25JUN15

HI-ILS or LOC Z Rwy 33

# HI-TACAN Z RWY 15

BARSDALE AFB (KBAD)

AL-391 [USAF]

TACAN BAD Chom 105	APCH CRS 158° Appt Elev 165	Rwy Idg 11,758 Thre 163 Appt Elev 165
-----------------------	-----------------------------------	--

\*\* When AIS Inop, increase CAT CDE vis to 1 1/2 miles.  
\*\* Circling not authorized W of Rwy.

AISF-1  
[A1]

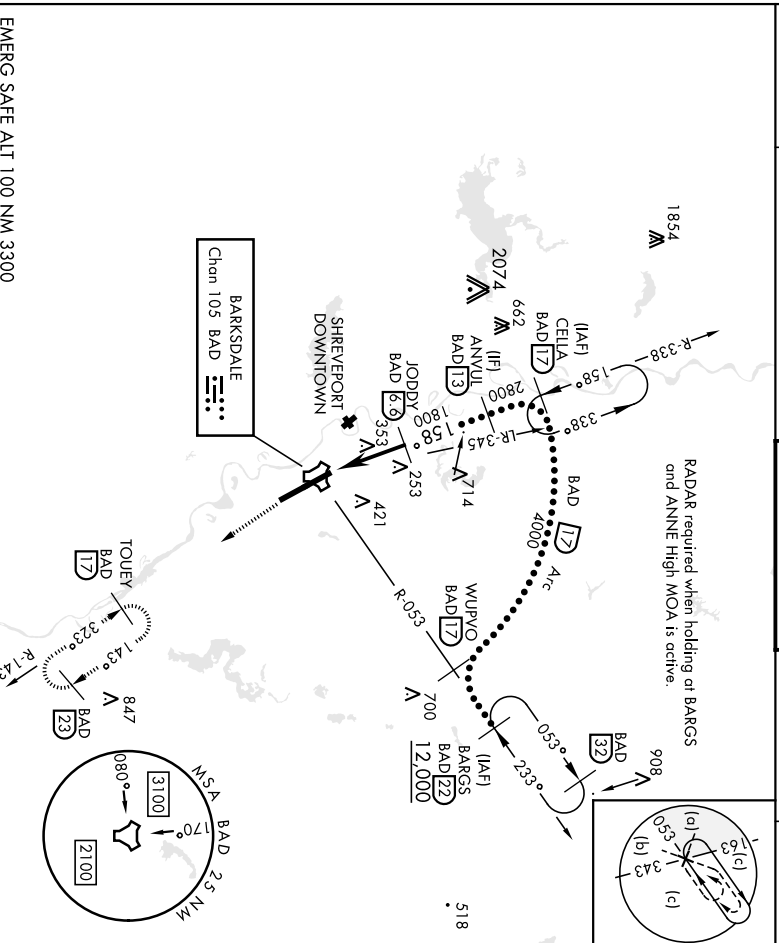
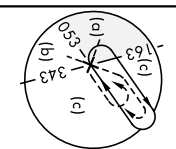
MISSED APPROACH: Climb to 3000  
via BAD R-143 direct TOUEY and hold.

ATIS 307.025	SHREVEPORT APP CON 320°-152° 123.75 153°-319° 119.9	360.725 335.55
-----------------	---	-------------------

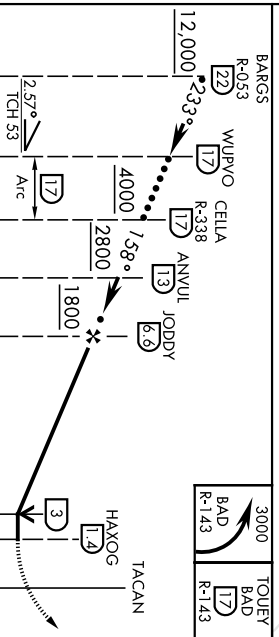
TOWER  
128.25 278.3

GND CON  
121.8 253.5

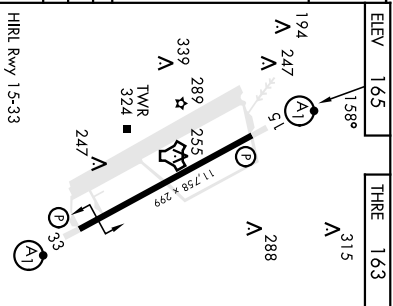
ASR



EMERG SAFE ALT 100 NM 3300



CATEGORY	C	D	E
S-15*	800-1 3/8	637 (700-1 3/8)	800-2 1/4
** CIRCLING	NOT AUTHORIZED	635 (700-2)	635 (700-2 1/4)



32°30'N-93°40'W

BARSDALE AFB (KBAD)

# HI-TACAN Z RWY 15

TACAN BAD

Chon 105  
APCH CRS  
323°  
Rwy Idg 11,758  
Thre 161  
Appt Elev 165

ALC391 [USAF]

# HI-TACAN Z RWY 33

BARKSDALE AFB (KBAD)

\*\* When A15 inop, increase CAT CDE vis to 1 1/2 miles.  
\*\* Circling not authorized W of Rwy.



MISSED APPROACH: Climb to 4000  
via BAD R-338 direct CELLA and hold.

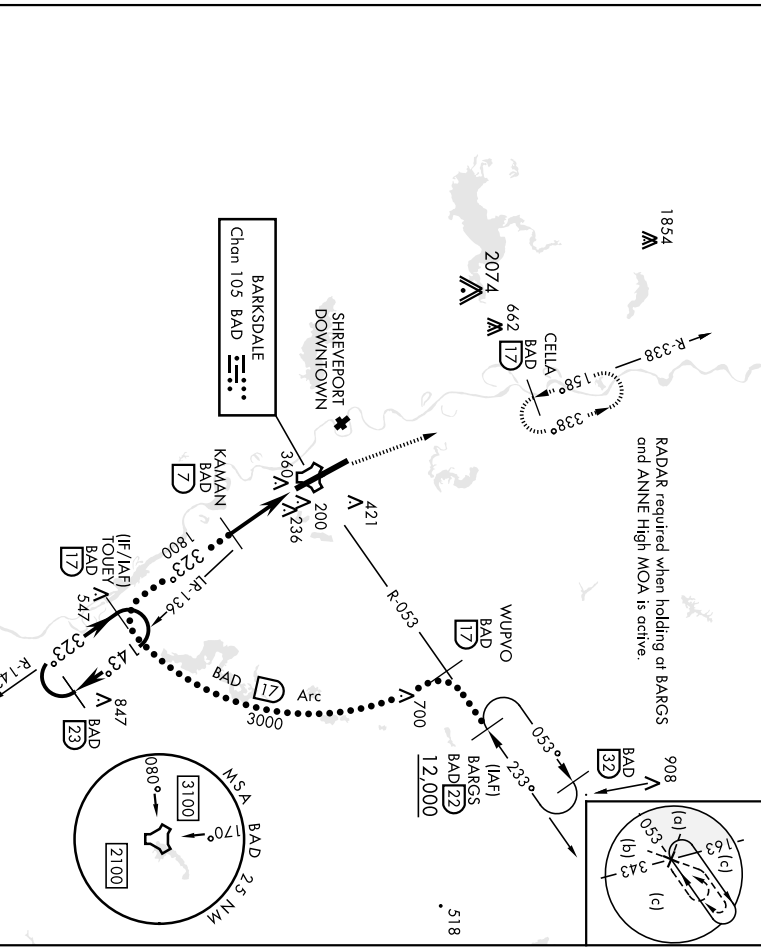
ATIS  
307.025  
SHREVEPORT APP CON  
320°-152° 123.75  
153°-319° 119.9  
360.725  
335.55

TOWER  
128.25 278.3

GND CON  
121.8 253.5

ASR

4000	CELLA BAD R-338 17	EMERG SAFE ALT 100 NM 3300	ELEV 165	THRE 161
TACAN	HOVUX 18	KAMAN 7	TOLUEY 17	247 A 5 288 A
CATEGORY	C	D	E	
S-33*	640/50	479 (500-1)	780-2 1/4	
** CIRCLING	NOT AUTHORIZED	760-2 595 (600-2)	615 (700-2 1/4)	
			HIRL Rwy 15-33	
			BOSSIER CITY, LOUISIANA	
			Barred City, Louisiana	
			Barred City, Louisiana	



# HI-TACAN Z RWY 33

VORTAC EMG 111.2

Chn 49

APCH CRS 323°

Rwy/Idg 11,758

Thre 161

Appt Elev 165

AL391 [USAF]

BARKSDALE AFB (KBAD)

HI-VOR/DME Z RWY 33

DME or RADAR required.

\* When ALS Inop, increase CAT CDE vis to 1 1/2 miles.  
\*\* Circling not authorized W of Rwy.

ALSF-1

MISSED APPROACH: Climb to 3100  
direct to EIC VORTAC and hold.

ATIS 307.025

SHREVEPORT APP CON 320°-152° 123.75

153°-319° 119.9

360.725

335.55

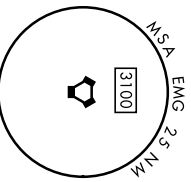
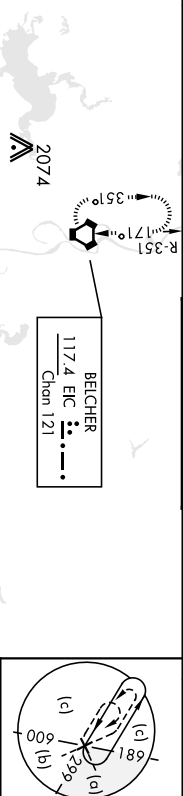
TOWER 128.25

278.3

GND CON 121.8

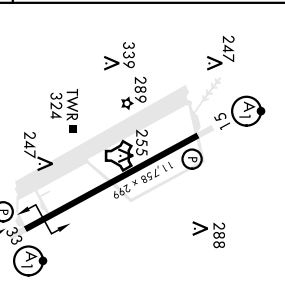
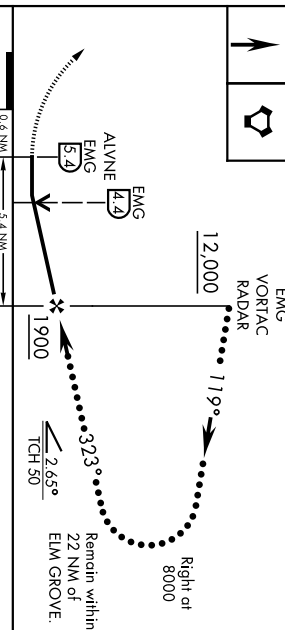
253.5

ASR



EMERG SAFE ALT 100 NM 3300

3100	ELEV	165	THRE	161
------	------	-----	------	-----



CATEGORY	C	D	E
S-33*	640/50	479 (500-1)	780-2 1/4
** CIRCLING	NOT AUTHORIZED	760-2 595 (600-2)	615 (700-2 1/4)

HIRL Rwy 15-33	FAE to MAP 5.4 NM
Knots	120 140 160 180 200
Min:sec	2:42 2:19 2:01 1:48 1:37

BOSSIER CITY, LOUISIANA Arch'd 5 25JUN15 32°30'N-93°40'W BARKSDALE AFB (KBAD)

HI-VOR/DME Z RWY 33

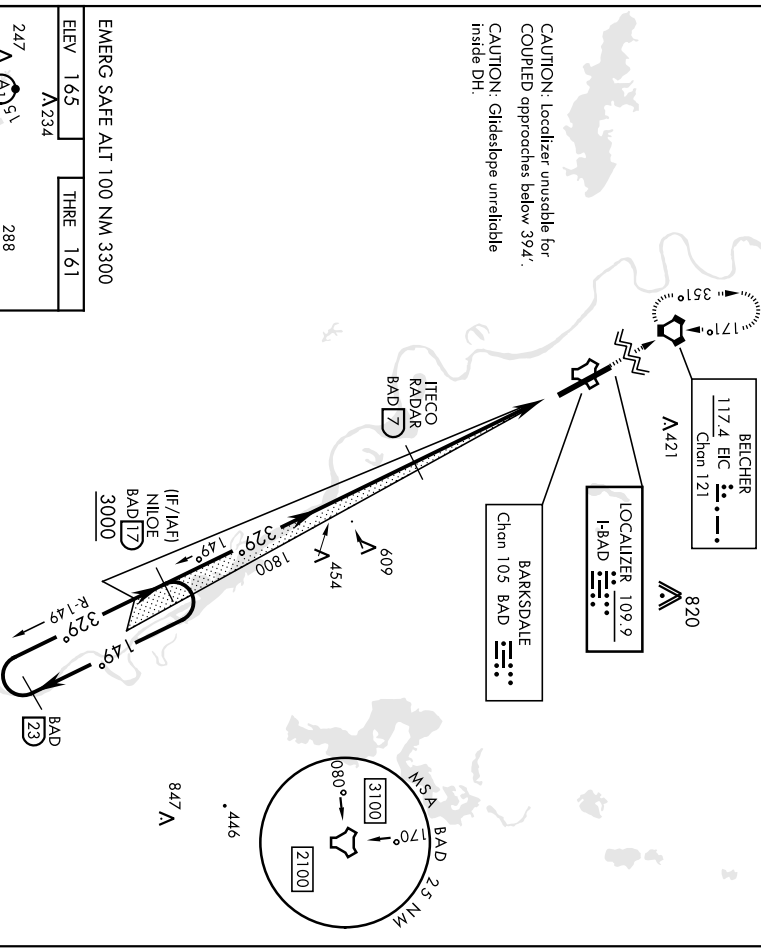
# ILS or LOC W RWY 33

ALC391 [USAF]

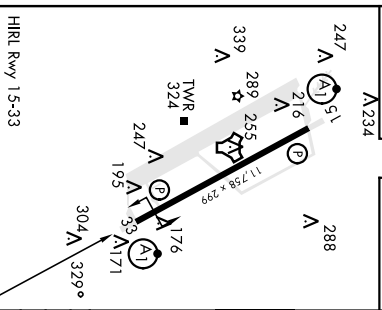
BARKSDALE AFB (KBAD)

LOC I-BAD <b>109.9</b>	APCH CRS <b>329°</b>	Run/Idg THR ELEV Appt Elev <b>165</b>	ALC391 [USAF]	ALSF-1 	MISSED APPROACH: Climb to 3100 direct E/C VORTAC and hold.
RADAR or DME required ** When ALS Inop, increase RVR to 40 and vis to 1/2 mile. ** When ALS Inop, increase CAT AB RVR to 55 and vis to 1 mile, CAT CDE RVR to 60 and vis to 1 1/2 miles. *** Circling not authorized W of Rwy.					
ATIS <b>307.025</b>	SHERVEPORT APP CON 320°-152° 159°-319°	REVPOR APP CON <b>123.75</b> <b>360.725</b> <b>119.9</b> <b>335.55</b>	TOWER <b>128.25</b> <b>278.3</b>	GND CON <b>121.8</b> <b>253.5</b>	ASR

CAUTION: Localizer unusable for  
COUPLED approaches Below 394'.  
CAUTION: Glideslope unreliable  
inside DH.



EMERG SAFE ALT 100 NM 3300  
ELEV 165 THREE 161  
A234



HIRL Rwy 15-33					
FAF to MAP 5.2 NM					
Knots	60	90	120	150	180
Min:Sec	5.12	3.28	2.36	2.05	1.44

3100	EIC	0.6 NM		5.2 NM	
JOGAB BAD [23]		IITCO RADAR BAD [7]		NII/OE BAD [17]	
329°		1800		3000	
1.49°		329°		1.49°	
3000		3000		3000	
GS 2.50°		TCH 49'		BAD [23]	
CATEGORY A		CATEGORY B		CATEGORY C	
S-LS 33 *		S-LS 33 *		S-LS 33 *	
S-LOC 33 **		S-LOC 33 **		S-LOC 33 **	
*** CIRCLING		NOT AUTHORIZED		NOT AUTHORIZED	
32°30'N-93°40'W		361/24		560/35	
		560/24		760-2	
		399 (400-1/2)		399 (400-3/8)	
		560/35		780-2 1/4	
		595 (600-2)		615 (700-2 1/4)	

# ILS or LOC W RWY 33

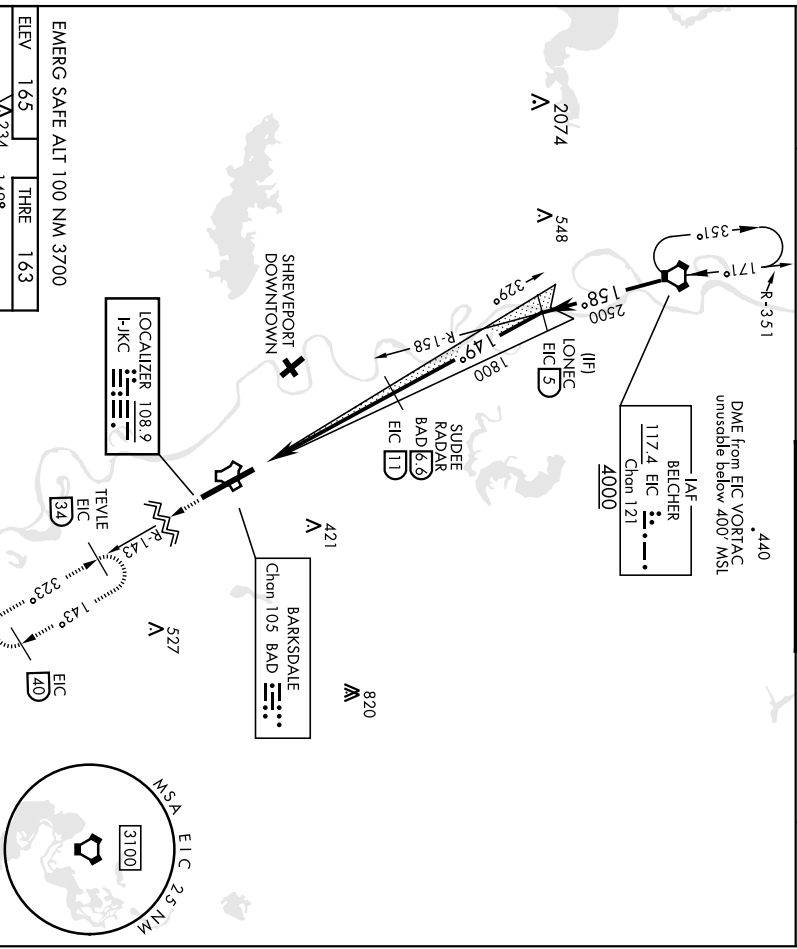
BARKSDALE AFB (KBAD)

# ILS or LOC Y RWY 15

BARSDALE AFB (KBAD)

LOC I-J-KC <b>108.9</b>	APCH CRS <b>149°</b>	Rwy Idg THRE Appt Elev <b>163</b> <b>165</b>	ALSf-1 	MISSED APPROACH: Climb to 2000, then climbing left turn to join EIC VORTAC R-143 outbound direct TEVLE (EIC 34 DME) and hold, maintain 3000.
ATIS <b>307.025</b>	320°-152° 153°-319°	<b>123.75</b> <b>960.725</b> <b>119.9</b> <b>335.55</b>	TOWER <b>128.25</b> <b>278.3</b>	GND CON <b>121.8</b> <b>253.5</b>
	SHEVEPORT APP CON		ASR	

RADAR or DME required.  
 \*\* When AIS Inop, increase RVR to 40 and vis to 3/4 mile  
 \*\* When AIS Inop, increase CAT AB RVR to 55 and vis to 1 mile, CAT CDE vis to 1 3/8 miles.  
 \*\*\* Circling not authorized W of Rwy.



EMERG SAFE ALT 100 NM 3700  
 ELEV 165 THREE 163

HRL Rwy 15-33	FAF to MAP 5.2 NM	CATEGORY	A	B	C	D	E
Knots	60 90 120 150 180	S-ILS 15*	363/24				
Min:Sec	5:12 3:28 2:36 2:05 1:44	S-LOC 15***	640/24	477 (500-1/2)	640/50	477 (500-1)	760-2 595 (600-2) 615 (700-2) 1/4
		CIRCLING	NOT AUTHORIZED		BARSDALE AFB (KBAD)		

BOSSIER CITY, LOUISIANA  
 Arrch 6 25JUN15

32°30'N-93°40'W

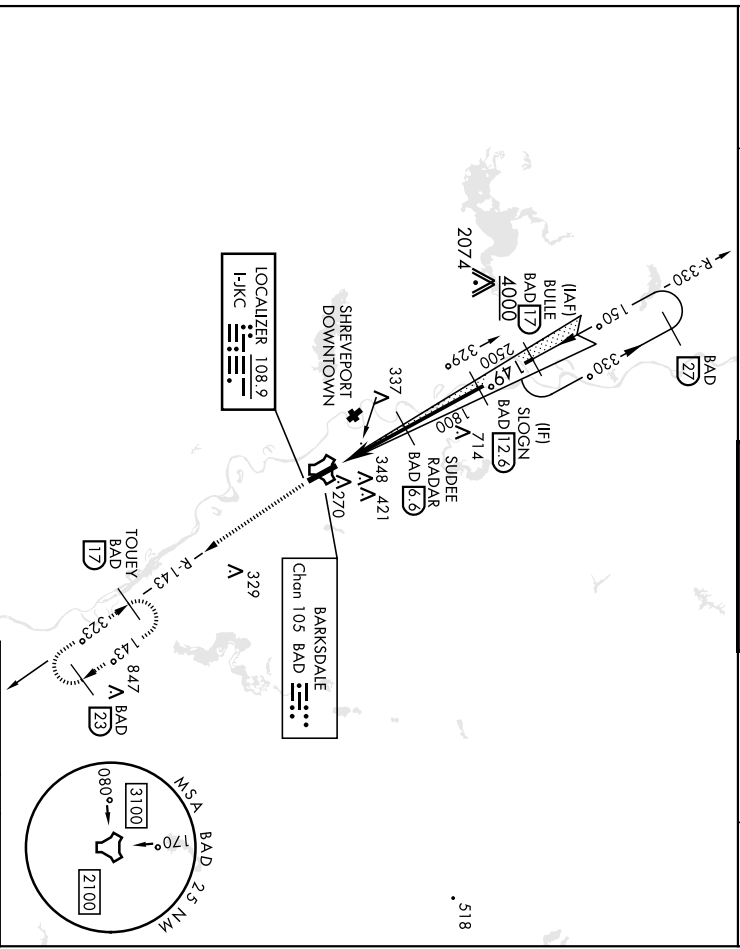
# ILS or LOC Y RWY 15



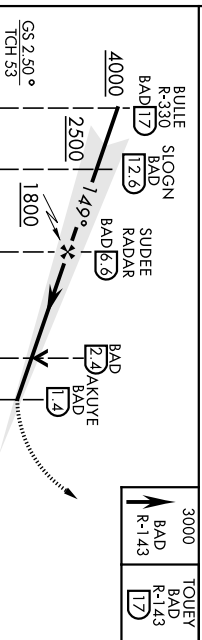
ALC-391 [USAF]

BARNSDALE AFB (KBAD)

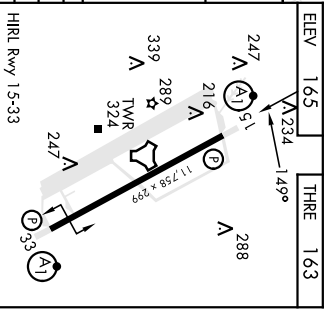
LOC I-LOC <b>108.9</b>	APCH CRS <b>149°</b>	Rwy Idg <b>11,758</b>	THRE <b>163</b>	ASL-F-1 
RADAR or DME required				MISSED APPROACH: Climb to 3000 via BAD R-143 direct TOUey and hold.
** When ALS Inop, Increase RVR to 40 and vis to 3/4 mile. ** When ALS Inop, Increase CAT AB RVR to 55 and vis to 1 mile, CAT CDE vis to 1 1/8 miles. *** Circling not authorized W of Rwy.				
ATIS <b>307.025</b>	SHREVEPORT APP CON 320°-152° <b>123.75</b> <b>360.725</b> 153°-319° <b>119.9</b> <b>335.55</b>	TOWER <b>128.25</b> <b>278.3</b>	GND CON <b>121.8</b> <b>253.5</b>	ASR



EMERG SAFE ALT 100 NM 3300



CATEGORY	A	B	C	D	E
S-ILS 15*	363/24		200	[200-1/2]	
S-LOC 15***	640/24	477 (500-1/2)	640/50	477	(500-1)



CIRCLING ***	NOT AUTHORIZED				
	BOSSIER CITY, LOUISIANA				
HIRL Rwy 15-33		FAF to MAD 5.2 NM			
Knots	60	90	120	150	180
Mins:Sec	5:12	3:28	2:36	2:05	1:44

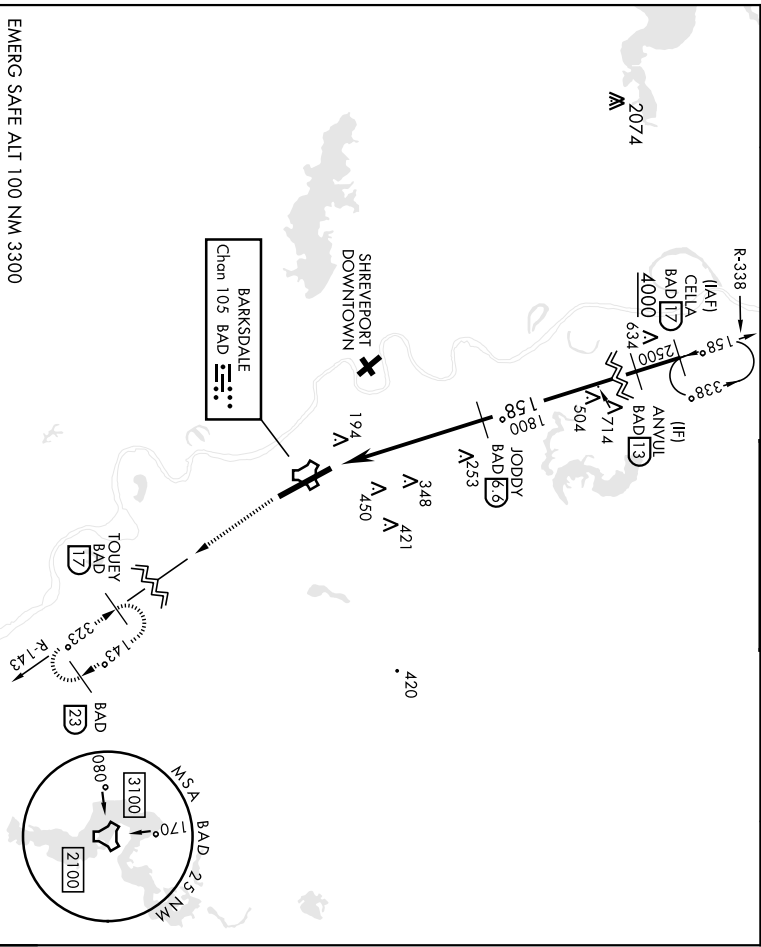
BOSSIER CITY, LOUISIANA 32°30'N-93°40'W

ILS or LOC Z RWY 15

# TACAN Y RWY 15

BARKSDALE AFB (KBAD)

TACAN BAD Chon 105	APCH CRS 158°	Rwy Idg 11,758	THR ELEV 163	APCH ELEV 165	AL-391 [USAF]	ALSF-1 	MISSED APPROACH: Climb to 3000 via BAD R-143 direct TOUHEY and hold.
* When A1S stop, increase CAT AB RVR to 55 and vis to 1 mile CAT CDE vis to 1 3/8 miles		** Circling not authorized W of Rwy.			TOWER 128.25 278.3		ASR
ATIS 307.025	SHREVEPORT APP CON 320°-152° 123.75 360.725 139°-319° 119.9 335.55		GND CON 121.8 253.5		ASR		



SC-4, 22 FEB 2024 to 21 MAR 2024

SC-4, 22 FEB 2024 to 21 MAR 2024

EMERG SAFE ALT 100 NM NM 3300

CELIA R-338 17	ANVUL 13	JODDY 6.9	3000 BAD R-143	TOUHEY BAD R-143 17	ELEV 165	THR 163	
<p>4000</p> <p>2500</p> <p>158°</p> <p>338°</p> <p>1800</p> <p>5.2 NM</p> <p>0.6</p> <p>HAXOG</p> <p>TACAN</p> <p>3</p> <p>14</p>				<p>234 A</p> <p>158°</p> <p>247 A</p> <p>288</p> <p>216 A</p> <p>255</p> <p>289 A</p> <p>339 A</p> <p>TWR 324</p> <p>11,758 x 299</p> <p>247 A</p> <p>33</p> <p>17</p>			
2.57° TCH 53					HIRL Rwy 15-33		
CATEGORY	A	B	C	D	E		
S-1.5 *	800/24	637 (700-1/2)	800-1 3/8	637 (700-1 3/8)	800-2 1/4	800-2 1/4	
CIRCLING **	NOT AUTHORIZED		800-2	635 (700-2)	635 (700-2 1/4)		

# TACAN Y RWY 15

BARKSDALE AFB (KBAD)

# TACAN Y RWY 33

BARKSDALE AFB (KBAD)

ALC391 [USAF]

TACAN BAD RWY Idg **11,758**

Chon **105**

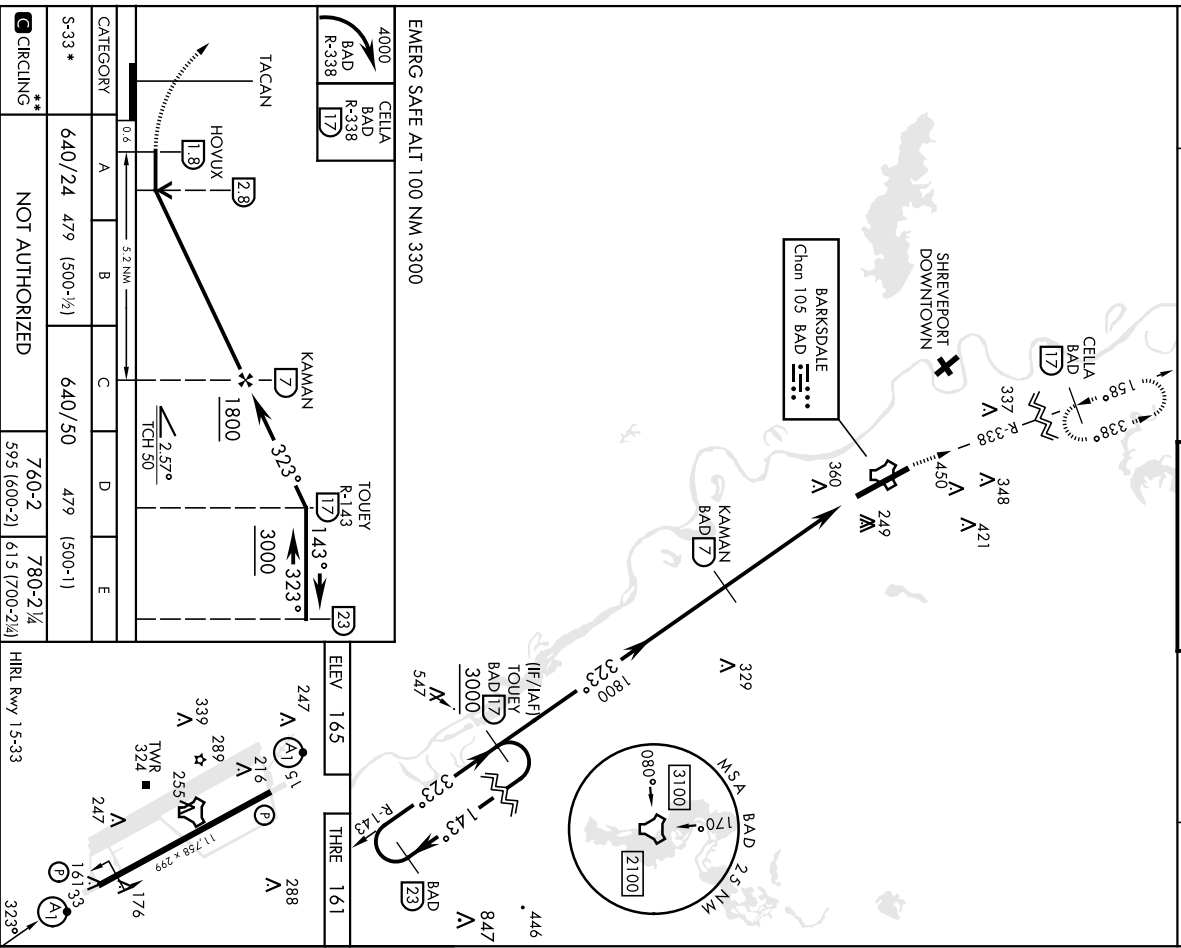
APCH CRS **323°** THR ELEV **161**  
APPL ELEV **165**

\* When ALS Inop, increase CAT AB RVR to 55 and vis to 1 mile,  
CAT CDE vis to 1 3/8 miles.  
\*\* Circling not authorized W of Rwy.

ALSF-1  
A1

MISSED APPROACH: Climb to 4000 via  
BAD R-338 direct CELLA and hold.

ATIS <b>307.025</b>	SHEREVEPORT APP CON 320°-152° <b>123.75</b> <b>360.725</b> 133°-319° <b>119.9</b> <b>335.55</b>	TOWER <b>128.25</b> <b>278.3</b>	GND CON <b>121.8</b> <b>253.5</b>	ASR
------------------------	---	-------------------------------------	--------------------------------------	-----

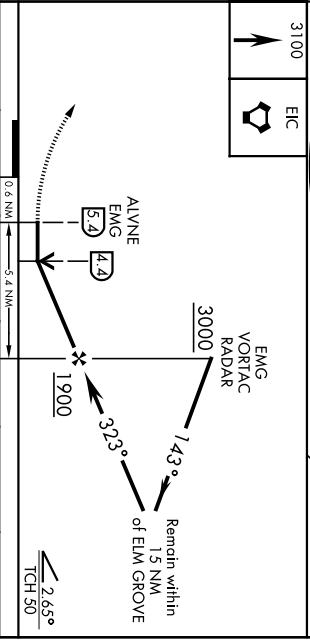
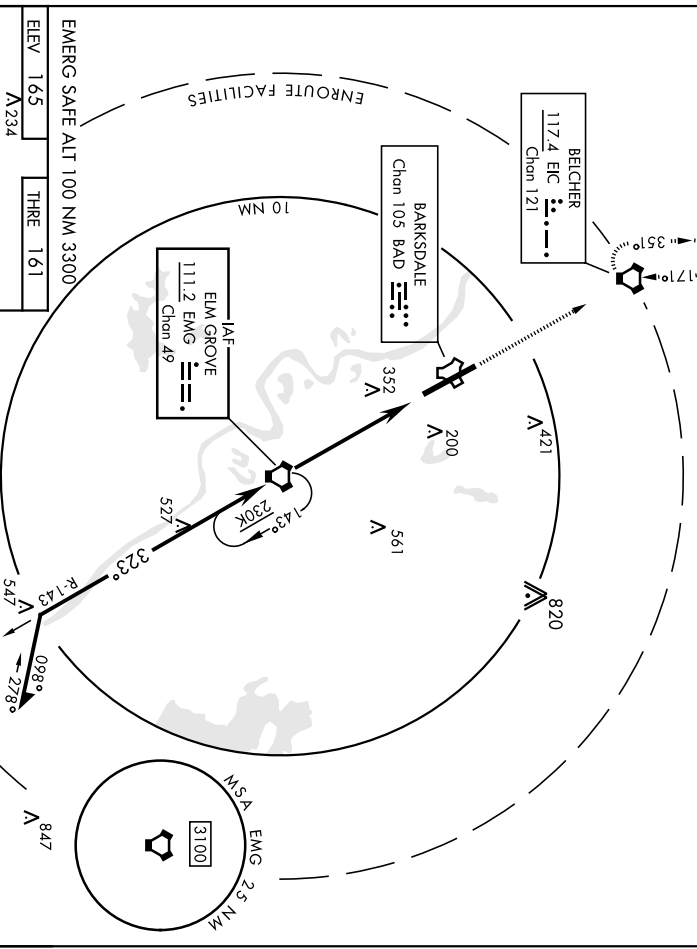


# VOR/DME Y RWY 33

BARKSDALE AFB (KBAD)

VORTAC EMG <b>111.2</b> Chn 49	APCH CRS <b>323°</b>	Rwy Idg 161 161 161	AL-391 [USAF]	ALST-1 	MISSED APPROACH: Climb to 3100 direct EIC VORTAC and hold.
DME or RADAR required:					
* When ALS inop, increase CAT AB RVR to 55 and vis to 1 mile. CAT CDE vis to 1/8 miles.					
ATIS <b>307.025</b>	SHEVEPORT APP CON <b>123.75</b> <b>360.725</b> <b>119.9</b>	TOWER <b>128.25</b> <b>278.3</b>	GND CON <b>121.8</b> <b>253.5</b>	ASR	

\*\* Circling not authorized W of Rwy.



HRL Rwy 1-5-33	CATEGORY				
FAF to MAP 5.4 NM	A	B	C	D	E
S-VOR 33 *	640/24	479 (500-1/2)	640/50	479 (500-1)	
Min:Sec	5.24	3.36	2.42	2.10	1.48
** CIRCLING					
NOT AUTHORIZED			760-2	780-2 1/4	
			595 (600-2)	615 (700-2 1/4)	

BOSSIER CITY, LOUISIANA BARKSDALE AFB (KBAD) 32°30'N-93°40'W

Amch 5 25JUN15

## VOR/DME Y RWY 33