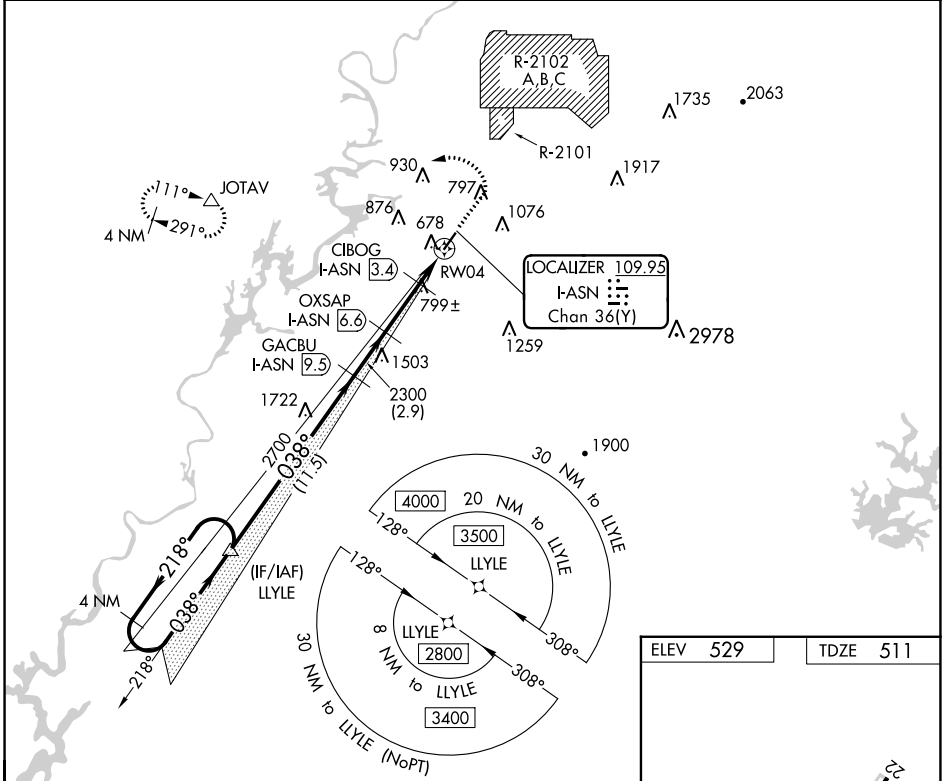


LOC/DME I-ASN 109.95 Chan 36(Y)	APP CRS 038°	Rwy Idg 6032 TDZE 511 Apt Elev 529
---	------------------------	---

ILS Y or LOC Y RWY 4

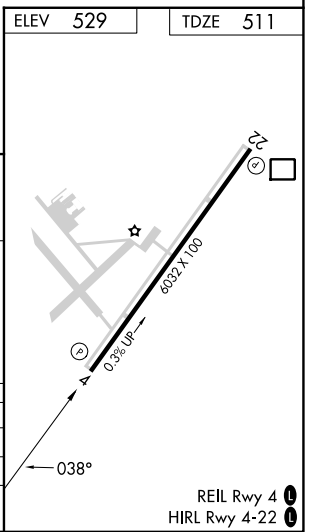
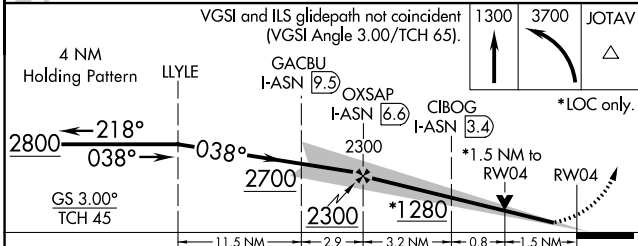
TALLADEGA MUNI (ASN)

<p>⚠ RNAV 1-GPS required. VDP NA with Anniston altimeter setting. When local altimeter setting not received, use Anniston altimeter setting and increase DA to 746 feet and all MDA 40 feet; increase S-LOC 4 Cats C and D visibility 1/8 SM and Circling Cat C visibility 1/4 SM.</p>	<p>⚠ MISSED APPROACH: Climb to 1300 then climbing left turn to 3700 direct JOTAV and hold.</p>	
<p>AWOS-3PT 118.425</p>	<p>BIRMINGHAM APP CON 132.15 285.45</p>	<p>UNICOM 122.8 (CTAF) 0</p>



SE-4, 22 FEB 2024 to 21 MAR 2024

SE-4, 22 FEB 2024 to 21 MAR 2024



CATEGORY	A	B	C	D
S-ILS 4	711-3/4 200 (200-3/4)			
S-LOC 4	1060-1	549 (600-1)	1060-1 3/8	549 (600-1 1/8)
C CIRCLING	1140-1 611 (700-1)	1180-1 651 (700-1)	1380-2 1/2 851 (900-2 1/2)	1500-3 971 (1000-3)

LOC/DME I-ASN 109.95 Chan 36(Y)	APP CRS 038°	Rwy Idg TDZE Apt Elev 6032 511 529
--	------------------------	--

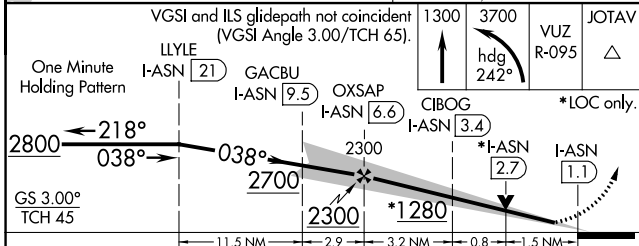
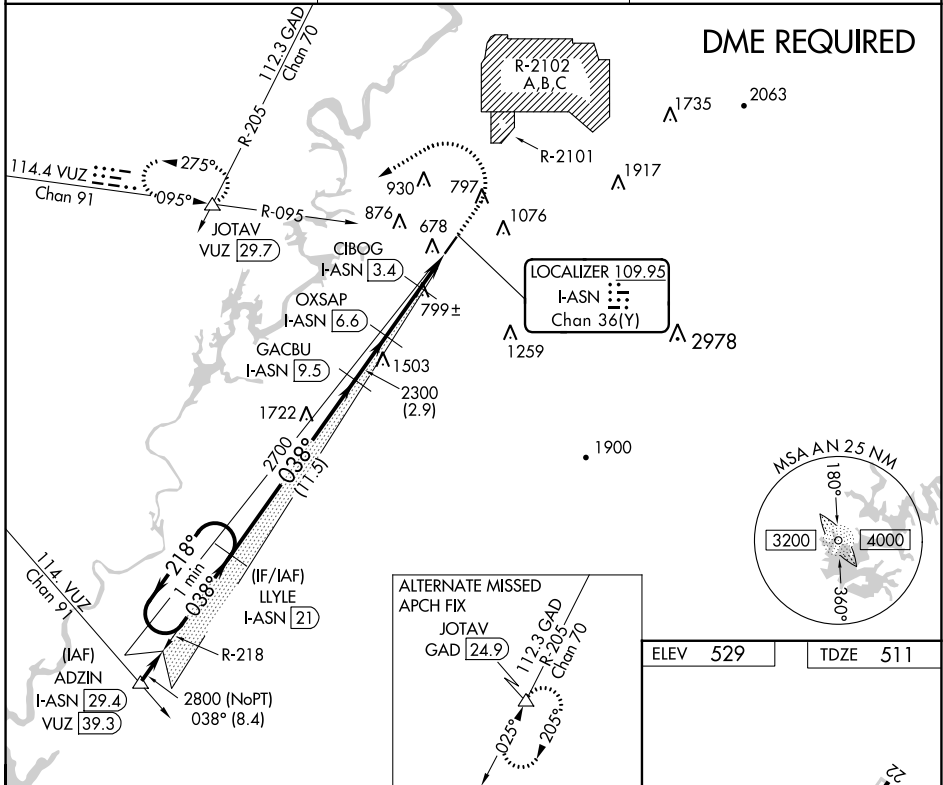
ILS Z or LOC Z RWY 4

TALLADEGA MUNI (ASN)

⚠️ NA DME required. VDP NA with Anniston altimeter setting. When local altimeter setting not received, use Anniston altimeter setting and increase DA to 744 feet and all MDA 40 feet; increase S-LOC 4 Cat C/D 1/2 mile and Circling Cat C 1/4 mile.

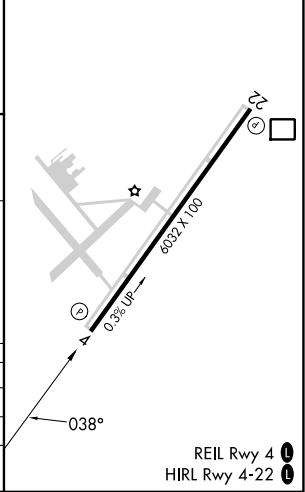
MISSED APPROACH: Climb to 1300 then climbing left turn to 3700 on heading 242° and on VUZ VORTAC R-095 to JOTAV INT/VUZ 30 DME and hold.

AWOS-3PT 118.425	BIRMINGHAM APP CON 132.15 285.45	UNICOM 122.8 (CTAF) 0
----------------------------	--	---------------------------------



ELEV 529	TDZE 511
----------	----------

CATEGORY	A	B	C	D
S-ILS 4	711-3/4 200 (200-3/4)			
S-LOC 4	1060-1	549 (600-1)	1060-1 1/2	549 (600-1 1/2)
CIRCLING	1140-1 611 (700-1)	1180-1 651 (700-1)	1380-2 1/2 851 (900-2 1/2)	1500-3 971 (1000-3)



SE-4, 22 FEB 2024 to 21 MAR 2024

SE-4, 22 FEB 2024 to 21 MAR 2024

WAAS CH 93720 W22A	APP CRS 218°	Rwy Idg TDZE Apt Elev	6032 529 529
--	------------------------	-----------------------------	---

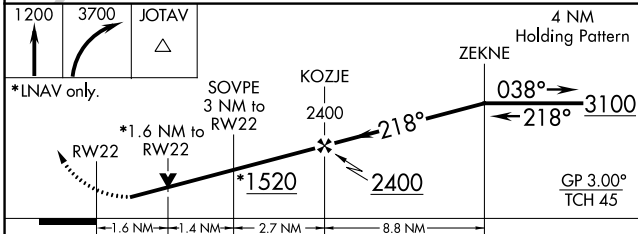
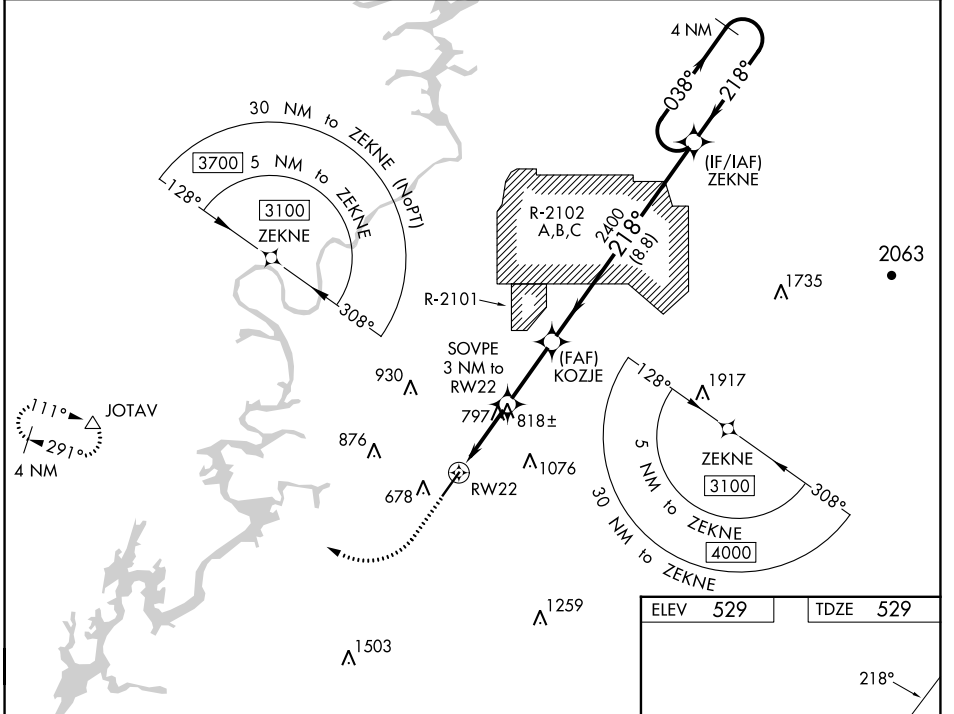
RNAV (GPS) RWY 22

TALLADEGA MUNI (ASN)

Baro-VNAV NA when using Anniston altimeter setting. For uncompensated Baro-VNAV systems, LNAV/VNAV NA below -16°C (4°F) or above 54°C (130°F). DME/DME RNP-0.3 NA. VDP NA with Anniston altimeter setting. When local altimeter setting not received, use Anniston altimeter setting and increase LPV DA to 856, LNAV/VNAV DA to 1075, and all MDA 40 feet; increase LPV and LNAV/VNAV all Cats visibility and LNAV Cats C/D visibility 1/8 mile. Increase Circling Cat C visibility 1/4 SM. Rwy 22 Helicopter visibility reduction below 3/4 SM NA.

MISSED APPROACH: Climb to 1200 then climbing right turn to 3700 direct JOTAV and hold, continue climb in hold to 3700.

AWOS-3PT 118.425	BIRMINGHAM APP CON 132.15 285.45	UNICOM 122.8 (CTAF) 0
----------------------------	--	---------------------------------



CATEGORY	A	B	C	D
LPV DA		821-1	292 (300-1)	
LNAV/VNAV DA		1040-1 3/4	511 (600-1 3/4)	
LNAV MDA	1080-1	551 (600-1)	1080-1 5/8	551 (600-1 5/8)
CIRCLING	1140-1 611 (700-1)	1180-1 651 (700-1)	1380-2 1/2 851 (900-2 1/2)	1500-3 971 (1000-3)

ELEV 529	TDZE 529
----------	----------

REIL Rwy 4 0
HIRL Rwy 4-22 0

SE-4, 22 FEB 2024 to 21 MAR 2024

SE-4, 22 FEB 2024 to 21 MAR 2024

WAAS CH 61008 W04A	APP CRS 038°	Rwy Idg 6032 TDZE 511 Apt Elev 529
--	------------------------	---

RNAV (GPS) RWY 4

TALLADEGA MUNI (ASN)

RNP APCH - GPS.

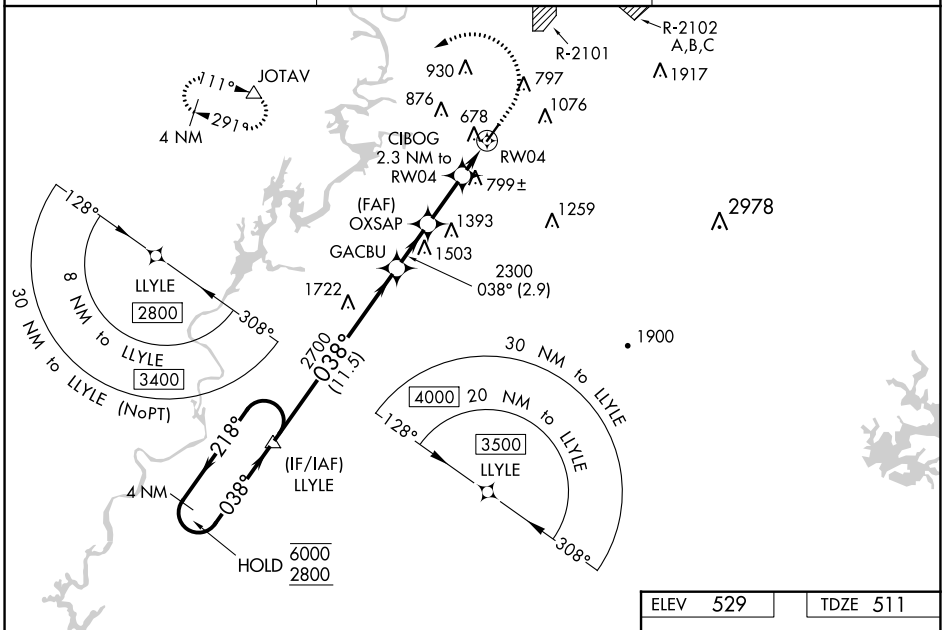
⚠ For uncompensated Baro-VNAV systems, LNAV/VNAV NA below -16°C or above 54°C.

MISSED APPROACH: Climb to 1300 then climbing left turn to 3700 direct JOTAV and hold, continue climb-in-hold to 3700.

AWOS-3PT
118.425

BIRMINGHAM APP CON
132.15 285.45

UNICOM
122.8 (CTAF) 0

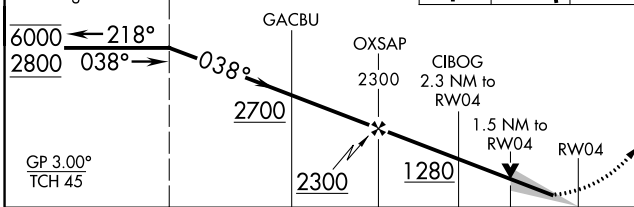


SE-4, 22 FEB 2024 to 21 MAR 2024

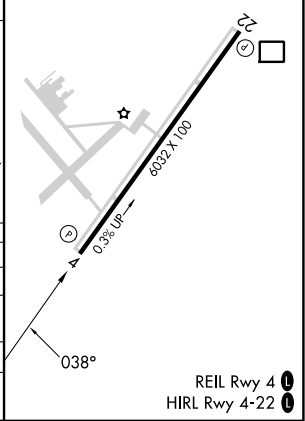
SE-4, 22 FEB 2024 to 21 MAR 2024

ELEV 529	TDZE 511
-----------------	-----------------

VGSI and RNAV glidepath not coincident (VGSI Angle 3.00/TCH 65).
 4 NM Holding Pattern LLYLE
 1300 3700 JOTAV



CATEGORY	A	B	C	D
LPV DA		711- ³ / ₄	200 (200- ³ / ₄)	
LNAV/VNAV DA		884-1	373 (400-1)	
LNAV MDA	1060-1	549 (600-1)	1060-1 ⁵ / ₈	549 (600-1 ⁵ / ₈)
C CIRCLING	1140-1 611 (700-1)	1180-1 651 (700-1)	1380-2 ¹ / ₂ 851 (900-2 ¹ / ₂)	1500-3 971 (1000-3)



REIL Rwy 4 **0**
HIRL Rwy 4-22 **0**