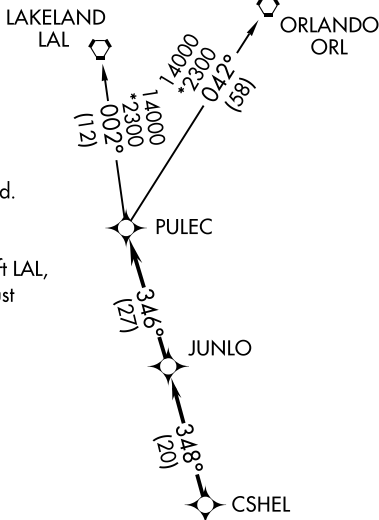


# CSHEL FIVE DEPARTURE (RNAV)

**TOP ALTITUDE:  
2000**



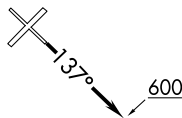
ATIS 134.225  
 CLNC DEL 118.0  
 GND CON 121.6  
 NAPLES TOWER ★ 128.5 (CTAF)  
 FORT MYERS DEP CON ★ 119.75 327.8

- NOTE: RADAR required.
- NOTE: DME/DME/IRU or GPS Required.
- NOTE: RNAV 1.
- NOTE: For Turbojet aircraft only.
- NOTE: For NON-GPS equipped aircraft LAL, LBV, RSW, and SRQ DME's must be operational.

### TAKEOFF OBSTACLES:

- Rwy 5: Trees beginning 92' from DER, left and right of centerline, up to 82' AGL/92' MSL. Tanks 1308' from DER, 293' left of centerline, up to 34' AGL/44' MSL.
- Rwy 14: Trees beginning 97' from DER, left and right of centerline, up to 101' AGL/108' MSL.
- Rwy 23: Trees beginning 126' from DER, left and right of centerline, up to 66' AGL/70' MSL.
- Rwy 32: Trees beginning 339' from DER, left and right of centerline, up to 119' AGL/123' MSL.

**TAKEOFF MINIMUMS**  
 Rwy 5, 14, 23, 32: Standard.



NOTE: Chart not to scale.

### DEPARTURE ROUTE DESCRIPTION

**TAKEOFF RUNWAY 5, 23, 32:** Climb on assigned heading for radar vectors to CSHEL, then via depicted route to PULEC, thence....

**TAKEOFF RUNWAY 14:** Climb heading 137° to 600, then via radar vectors to CSHEL, then via depicted route to PULEC, thence....

....via (transition). Maintain 2000 or as assigned by ATC, expect filed altitude/flight level 10 minutes after departure.

LAKELAND TRANSITION (CSHEL5.LAL):

ORLANDO TRANSITION (CSHEL5.ORL):

# NAPLES FIVE DEPARTURE

**TOP ALTITUDE:  
2000**

ST. PETERSBURG  
116.4 PIE   
Chan 111  
N27°54.47' - W82°41.06'  
L-21-24, H-8

LAKELAND  
116.0 LAL   
Chan 107  
N27°59.17'  
W82°00.83'  
L-21-23-24, H-8

ORLANDO  
112.2 ORL   
Chan 59  
N28°32.56'  
W81°20.10'  
L-21-23-24, H-8

ATIS 134.225  
CLNC DEL  
118.0  
GND CON  
121.6  
NAPLES TOWER\*  
128.5 (CTAF)  
FORT MYERS DEP CON\*  
119.75 327.8

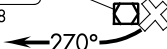
SARASOTA  
117.0 SRQ   
Chan 117  
N27°24.42'  
W82°33.82'  
L-21-23, H-8

LEE COUNTY  
111.8 RSW   
Chan 55  
N26°31.79'  
W81°46.55'  
L-21-23, H-8

LA BELLE  
110.4 LBV   
Chan 41  
N26°49.69'  
W81°23.49'  
L-21-23, H-8

CYPRESS  
108.6 CYY   
Chan 23  
N26°09.21'  
W81°46.69'  
L-21-23, H-8

PAHOKEE  
115.4 PHK   
Chan 101  
N26°46.96'  
W80°41.49'  
L-23, H-8



FT. LAUDERDALE  
114.4 FLL   
Chan 91  
N26°04.44'  
W80°09.99'  
L-23, H-8

NOTE: RADAR required.

**TAKEOFF MINIMUMS**  
Rwys 5, 14, 32: NA-ATC.  
Rwy 23: 300-1.

### TAKEOFF OBSTACLE NOTES

Rwy 23: Trees 400' left and right of DER, up to 100' AGL/110' MSL.

### NOISE ABATEMENT NOTE:

Jet aircraft departure procedures and headings are predicated on avoiding noise sensitive areas. Flight crew awareness and compliance is important in minimizing noise impacts on surrounding communities.

NOTE: Chart not to scale.



## DEPARTURE ROUTE DESCRIPTION

**TAKEOFF RUNWAY 23:** Turn right heading 270°. Climb and maintain 2000. Expect RADAR vectors to join assigned route. Expect clearance to filed altitude 10 minutes after departure.