

LOC I-MZX 111.75	APP CRS 172°	Rwy Idg 8001
		TDZE 146
		Apt Elev 146

ILS or LOC RWY 17

AUGUSTA RGNL AT BUSH FLD (AGS)

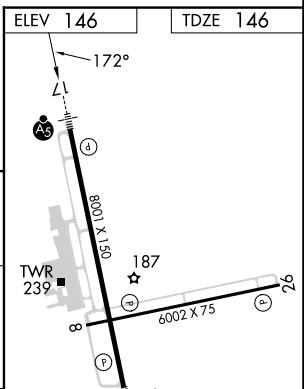
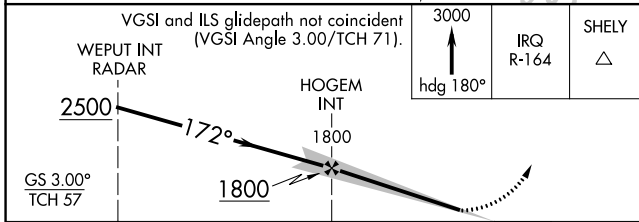
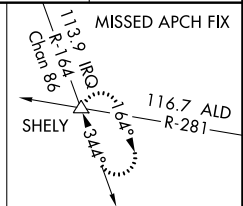
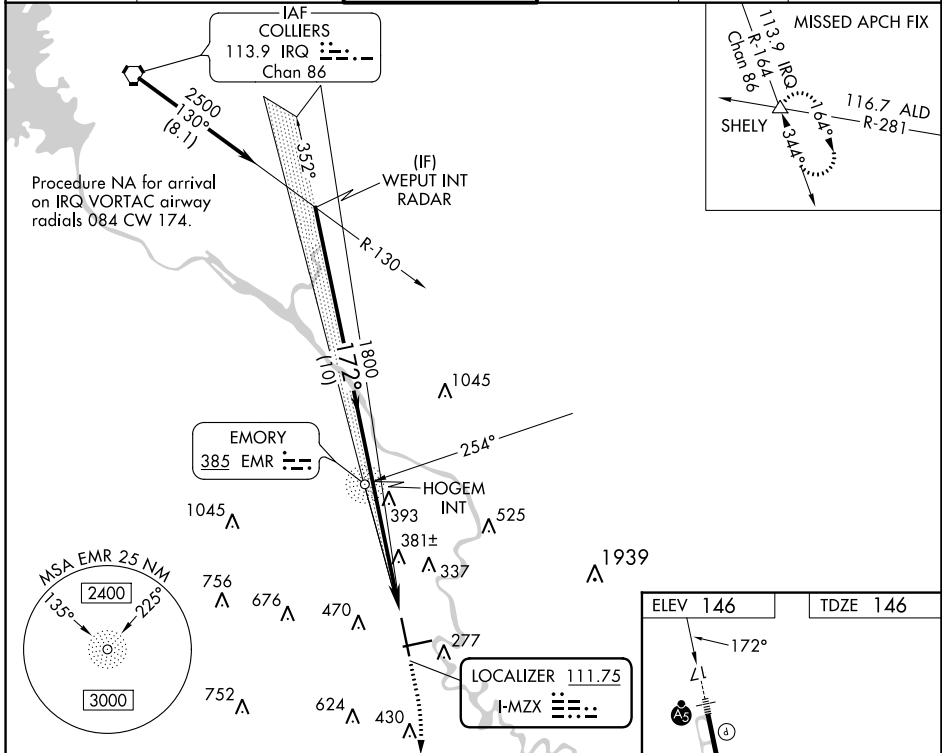
ADF required for LOC only.

▽
△ For inop ALS, increase S-LOC 17 Cats C and D visibility to 1 3/8 SM.

MALSR

MISSED APPROACH: Climb to 3000 on heading 180° and IRQ VORTAC R-164 to SHELLY INT and hold.

ATIS 132.75	AUGUSTA APP CON ★ 126.8 270.3	AUGUSTA TOWER ★ 118.7 (CTAF) 0 239.3	GND CON 121.9 348.6	CLNC DEL 118.65	UNICOM 122.95
-----------------------	---	--	-------------------------------	---------------------------	-------------------------



CATEGORY	A	B	C	D
S-ILS 17	351/24 205 (300-1/2)			
S-LOC 17	640/24	494 (500-1/2)	640/50	494 (500-1)
CIRCLING	780-1	634 (700-1)	780-1 3/4 634 (700-1 3/4)	940-2 1/2 794 (800-2 1/2)
	FAF to MAP 5 NM			
	Knots	60	90	120 150 180
	Min:Sec	5:00	3:20	2:30 2:00 1:40

SE-4, 22 FEB 2024 to 21 MAR 2024

SE-4, 22 FEB 2024 to 21 MAR 2024

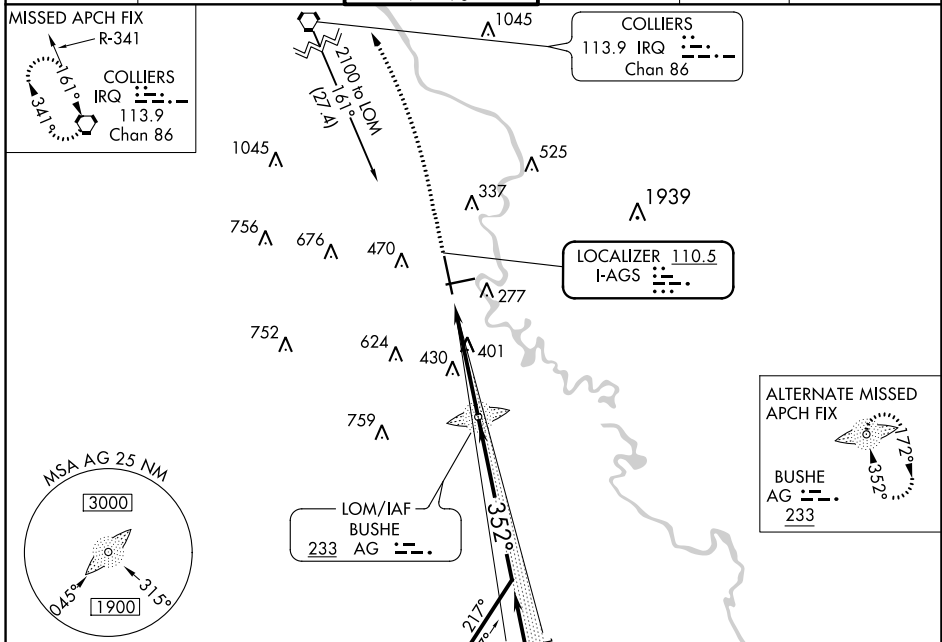
LOC I-AGS 110.5	APP CRS 352°	Rwy Idg 8001	TDZE 137
		Apt Elev 146	

ILS or LOC RWY 35
AUGUSTA RGNL AT BUSH FLD (AGS)

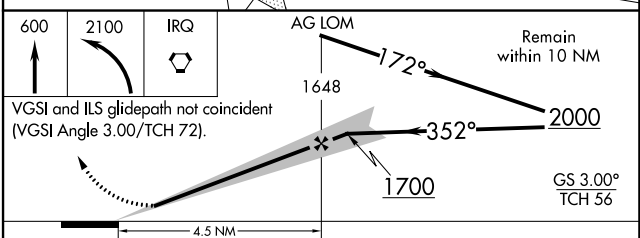
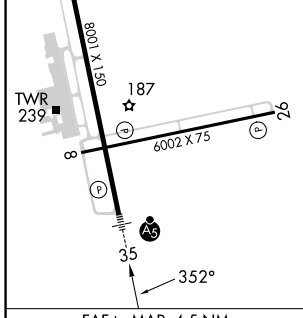
⚠ When local altimeter setting not received, use Daniel Fld altimeter setting and increase S-ILS 35 DA to 392; increase all MDAs 60 feet and S-LOC 35 and Circling Cats C and D visibility ¼ SM. Autopilot coupled approach NA below 940.

MALSR MISSED APPROACH: Climb to 600 then climbing left turn to 2100 direct IRQ VORTAC and hold.

ATIS 132.75	AUGUSTA APP CON ★ 126.8 270.3	AUGUSTA TOWER ★ 118.7 (CTAF) 0 239.3	GND CON 121.9 348.6	CLNC DEL 118.65	UNICOM 122.95
-----------------------	---	--	-------------------------------	---------------------------	-------------------------



ELEV 146	TDZE 137
MIRL Rwy 8-26	HIRL Rwy 17-35
REIL Rwy 8 and 26	



CATEGORY	A	B	C	D
S-ILS 35		337/24	200 (200-½)	
S-LOC 35	660/24	523 (600-½)	660/55	523 (600-1)
<input checked="" type="checkbox"/> CIRCLING	780-1	634 (700-1)	780-1¾ 634 (700-1¾)	940-2½ 794 (800-2½)


SE-4, 22 FEB 2024 to 21 MAR 2024

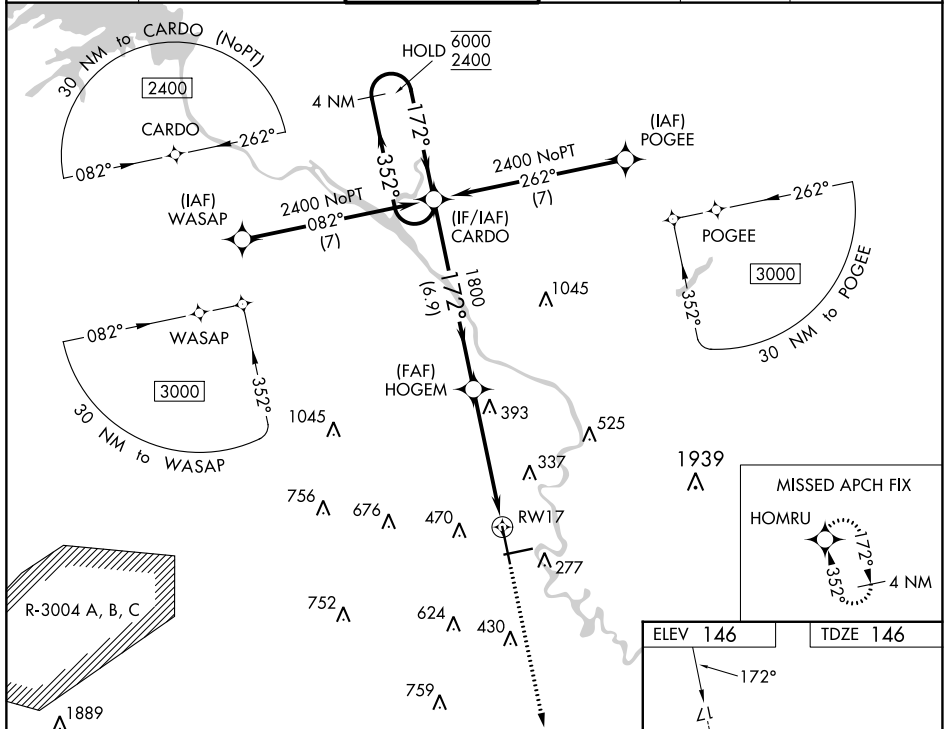
SE-4, 22 FEB 2024 to 21 MAR 2024


WAAS CH 77504 W17A	APP CRS 172°	Rwy Idg TDZE Apt Elev	8001 146 146
--	------------------------	-----------------------------	---

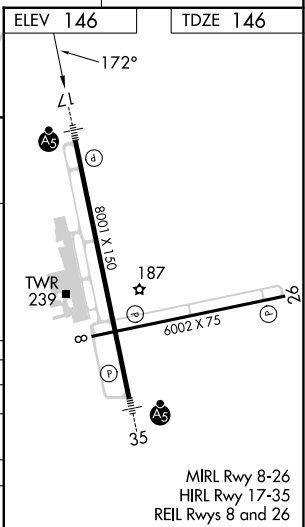
RNAV (GPS) RWY 17

AUGUSTA RGNL AT BUSH FLD (AGS)

RNP APCH - GPS.		<p>▼ For uncompensated Baro-VNAV systems, LNAV/VNAV NA below -6°C or above 54°C. ▲ For inop ALS, increase LNAV/VNAV all Cats visibility to RVR 4500.</p>		<p>MALS/R </p> <p>MISSED APPROACH: Climb to 2100 direct HOMRU and hold.</p>	
ATIS 132.75	AUGUSTA APP CON ★ 126.8 270.3	AUGUSTA TOWER ★ 118.7 (CTAF) 0 239.3	GND CON 121.9 348.6	CLNC DEL 118.65	UNICOM 122.95



4 NM Holding Pattern		VGSI and RNAV glidepath not coincident (VGSI Angle 3.00/TCH 71).		2100	HOMRU
<p>6000 ← 352°</p> <p>2400 ← 172° →</p> <p>GP 3.00°</p> <p>TCH 57</p>		<p>HOGEM 1800</p> <p>1.5 NM to RW17</p>			
6.9 NM		3.5 NM		1.5 NM	
CATEGORY	A	B	C	D	
LPV DA	351/24		205 (300-½)		
LNAV/VNAV DA	460/24		314 (400-½)		
LNAV MDA	700/24 554 (600-½)		700/60		554 (600-1¼)
◻ CIRCLING	780-1 634 (700-1)		780-1¾ 634 (700-1¾)		940-2½ 794 (800-2½)



SE-4, 22 FEB 2024 to 21 MAR 2024

SE-4, 22 FEB 2024 to 21 MAR 2024

APP CRS	Rwy Idg	6002
262°	TDZE	139
	Apt Elev	146

RNAV (GPS) RWY 26

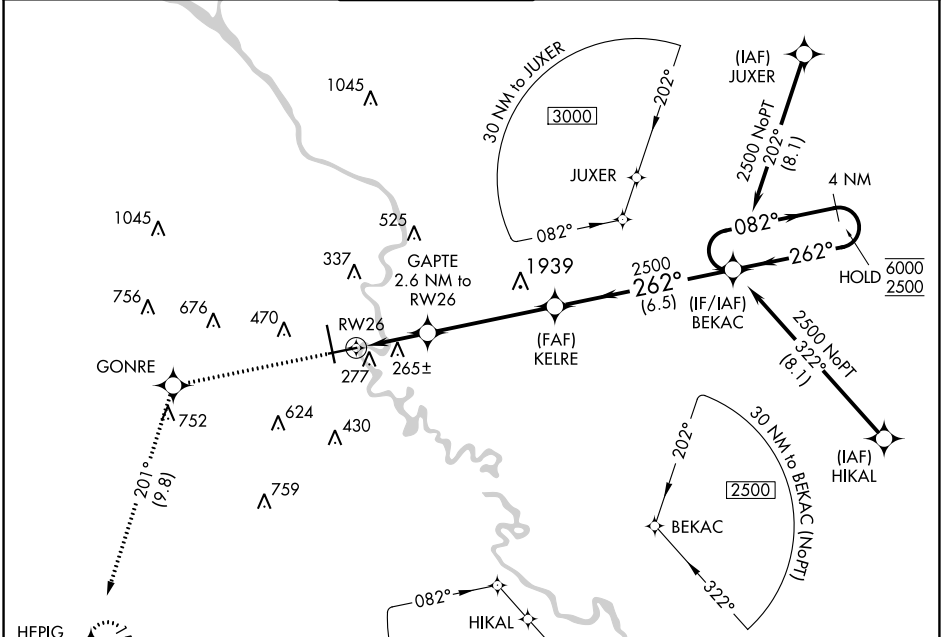
AUGUSTA RGNL AT BUSH FLD (AGS)

RNP APCH - GPS.

▼ Rwy 26 helicopter visibility reduction below 3/4 SM NA. VDP NA with Daniel Fld altimeter setting. When local altimeter setting not received, use Daniel Fld altimeter setting and increase all MDAs 60 feet; increase LNAV and Circling Cats C and D visibility 1/4 SM.

▲ MISSED APPROACH: Climb to 3000 direct GONRE and on track 201° to HEPIG and hold.

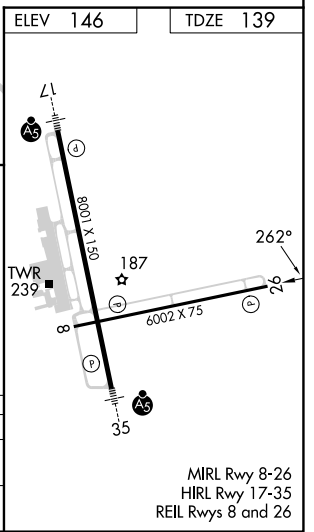
ATIS	AUGUSTA APP CON ★	AUGUSTA TOWER ★	GND CON	CLNC DEL	UNICOM
132.75	126.8 270.3	118.7 (CTAF) 0 239.3	121.9 348.6	118.65	122.95



SE-4, 22 FEB 2024 to 21 MAR 2024

SE-4, 22 FEB 2024 to 21 MAR 2024

ELEV 146	TDZE 139			
3000	GONRE	tr 201°	HEPIG	
CATEGORY	A	B	C	D
LNAV MDA	520-1	381 (400-1)	520-1 1/8	381 (400-1 1/8)
CIRCLING	780-1	634 (700-1)	780-1 3/4	940-2 1/2
			634 (700-1 3/4)	794 (800-2 1/2)



MIRL Rwy 8-26
HIRL Rwy 17-35
REIL Rws 8 and 26

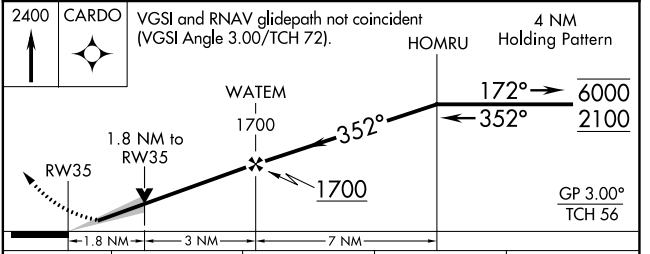
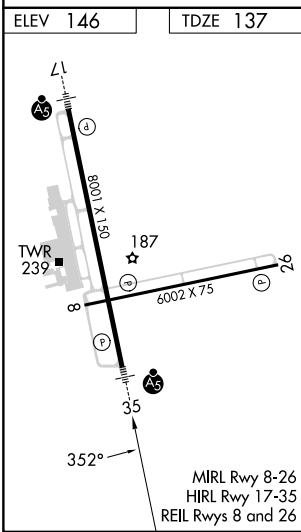
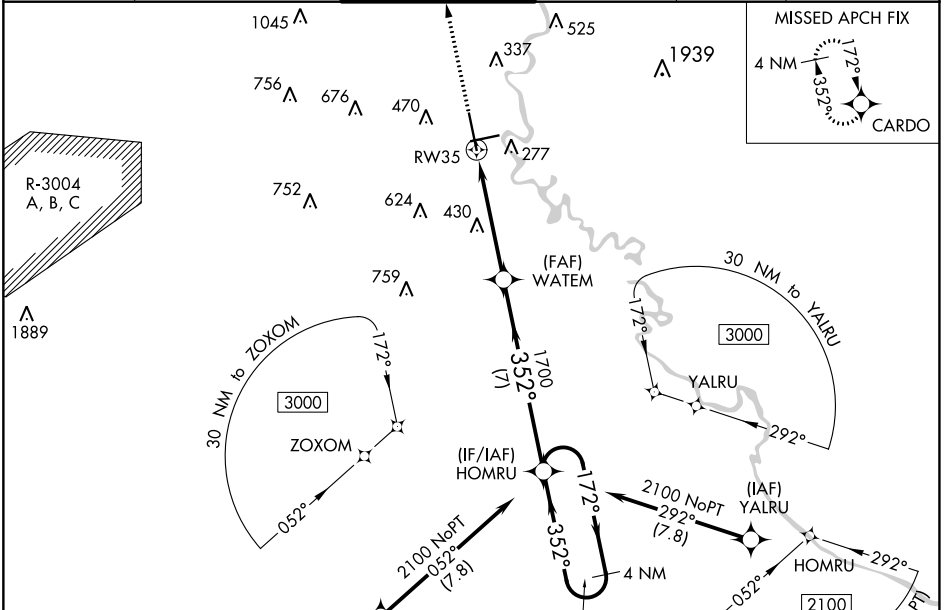
WAAS CH 97303 W35A	APP CRS 352°	Rwy Idg 8001 TDZE 137 Apt Elev 146
--	------------------------	---

RNAV (GPS) RWY 35

AUGUSTA RGNL AT BUSH FLD (AGS)

RNP APCH - GPS.		MALSRS	MISSED APPROACH: Climb to 2400 direct CARDO and hold.	
For uncompensated Baro-VNAV systems, LNAV/VNAV NA below -6°C or above 54°C.				

ATIS 132.75	AUGUSTA APP CON ★ 126.8 270.3	AUGUSTA TOWER ★ 118.7 (CTAF) 0 239.3	GND CON 121.9 348.6	CLNC DEL 118.65	UNICOM 122.95
-----------------------	---	--	-------------------------------	---------------------------	-------------------------



CATEGORY	A	B	C	D
LPV DA	387/24 250 (300-½)			
LNAV/VNAV DA	668/55 531 (600-1)			
LNAV MDA	780/24	643 (700-½)	780-1⅓	643 (700-1⅓)
<input checked="" type="checkbox"/> CIRCLING	780-1	634 (700-1)	780-1⅞	940-2½ 794 (800-2½)

SE-4, 22 FEB 2024 to 21 MAR 2024

SE-4, 22 FEB 2024 to 21 MAR 2024

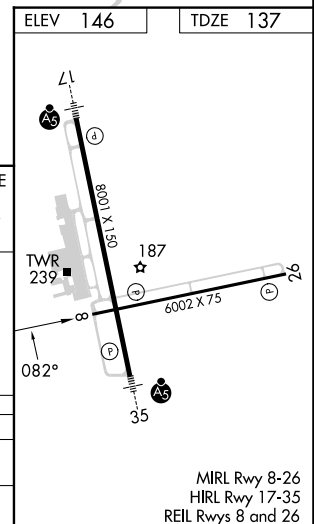
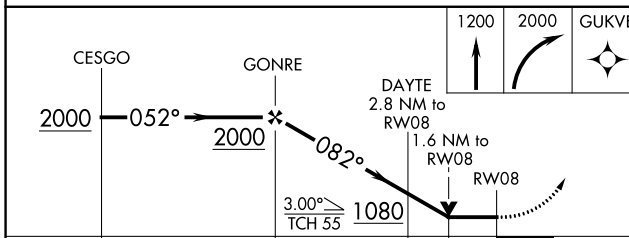
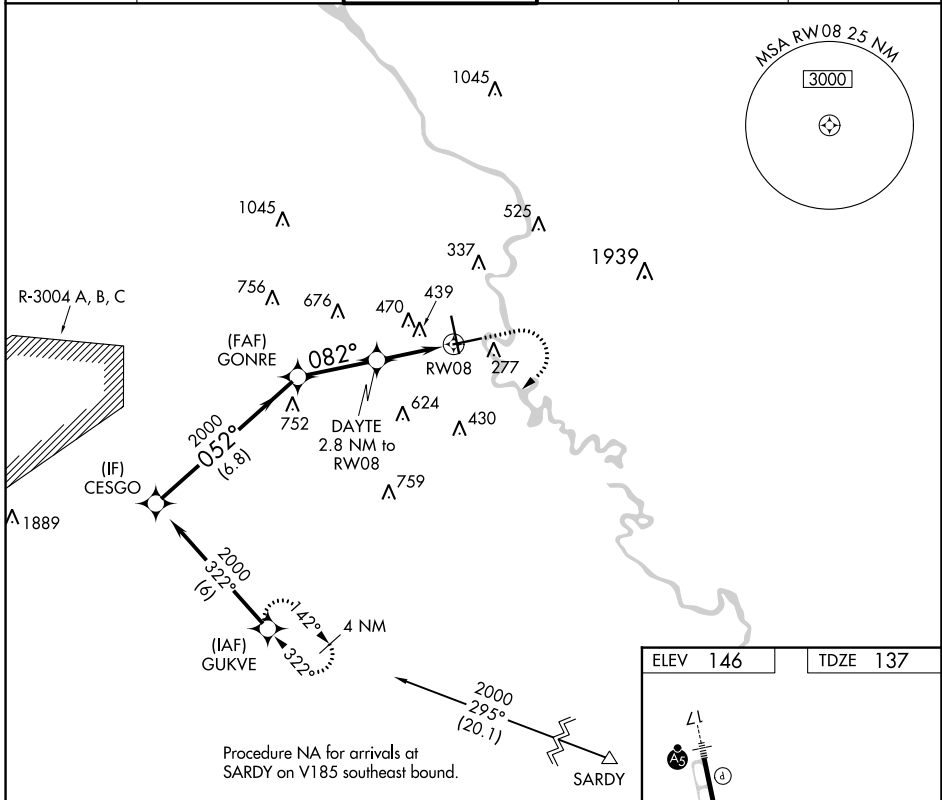
APP CRS	Rwy Idg	6002
082°	TDZE	137
	Apt Elev	146

RNAV (GPS) Y RWY 8

AUGUSTA RGNL AT BUSH FLD (AGS)

RNP APCH - GPS.				MISSED APPROACH: Climb to 1200 then climbing right turn to 2000 direct GUKVE and hold.			
▼ Rwy 8 helicopter visibility reduction below $\frac{3}{4}$ SM NA. VDP NA with Daniel Fld altimeter setting. When local altimeter setting not received, use Daniel Fld altimeter setting and increase all MDAs 60 feet; increase LNAV Cats C and D visibility $\frac{1}{8}$ SM and Circling Cats C and D visibility $\frac{1}{4}$ SM.							

ATIS	AUGUSTA APP CON *	AUGUSTA TOWER *	GND CON	CLNC DEL	UNICOM
132.75	126.8 270.3	118.7 (CTAF) 0 239.3	121.9 348.6	118.65	122.95



CATEGORY	A	B	C	D
LNAV MDA	700-1	563 (600-1)	700- $\frac{1}{8}$	563 (600- $\frac{1}{8}$)
CIRCLING	780-1	634 (700-1)	780- $\frac{1}{4}$ 634 (700- $\frac{1}{4}$)	940- $\frac{1}{2}$ 794 (800- $\frac{1}{2}$)

SE-4, 22 FEB 2024 to 21 MAR 2024

SE-4, 22 FEB 2024 to 21 MAR 2024

WAAS CH 90328 W08A	APP CRS 082°	Rwy Idg 6002 TDZE 137 Apt Elev 146
--	------------------------	---

RNAV (GPS) Z RWY 8

AUGUSTA RGNL AT BUSH FLD (AGS)

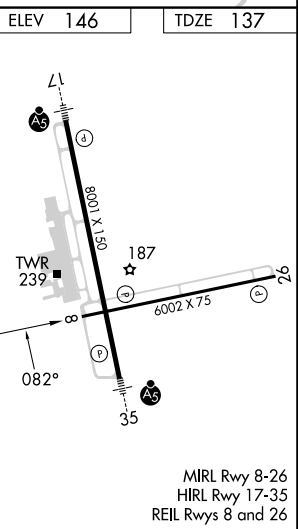
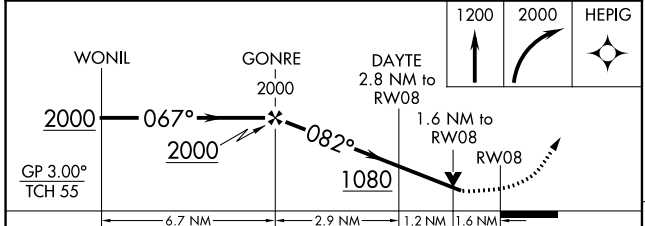
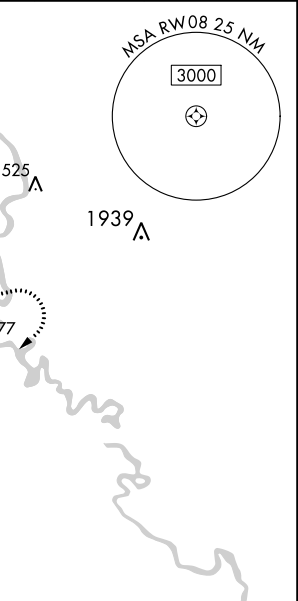
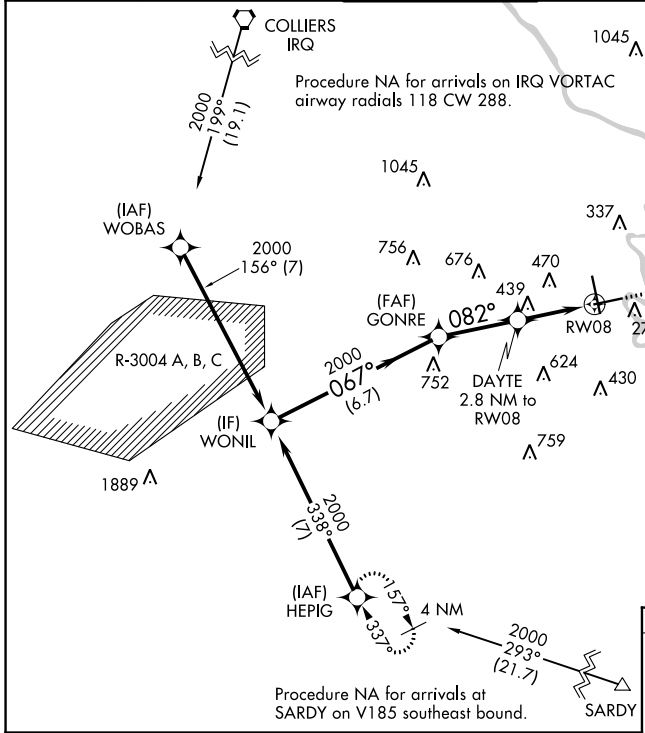
RNP APCH - GPS.

▽ Rwy 8 helicopter visibility reduction below 3/4 SM NA. For uncompensated Baro-VNAV systems, LNAV/VNAV NA below -6°C or above 54°C.

▲

MISSED APPROACH: Climb to 1200 then climbing right turn to 2000 direct HEPIG and hold.

ATIS 132.75	AUGUSTA APP CON ★ 126.8 270.3	AUGUSTA TOWER ★ 118.7 (CTAF) 239.3	GND CON 121.9 348.6	CLNC DEL 118.65	UNICOM 122.95
-----------------------	---	--	-------------------------------	---------------------------	-------------------------



CATEGORY	A	B	C	D
LPV DA		669-1½	532 (600-1½)	
LNAV/VNAV DA		693-1⅝	556 (600-1⅝)	
LNAV MDA	700-1	563 (600-1)	700-1⅝	563 (600-1⅝)
CIRCLING	760-1	780-1	780-1¾	940-2½
	614 (700-1)	634 (700-1)	634 (700-1¾)	794 (800-2½)

SE-4, 22 FEB 2024 to 21 MAR 2024

SE-4, 22 FEB 2024 to 21 MAR 2024