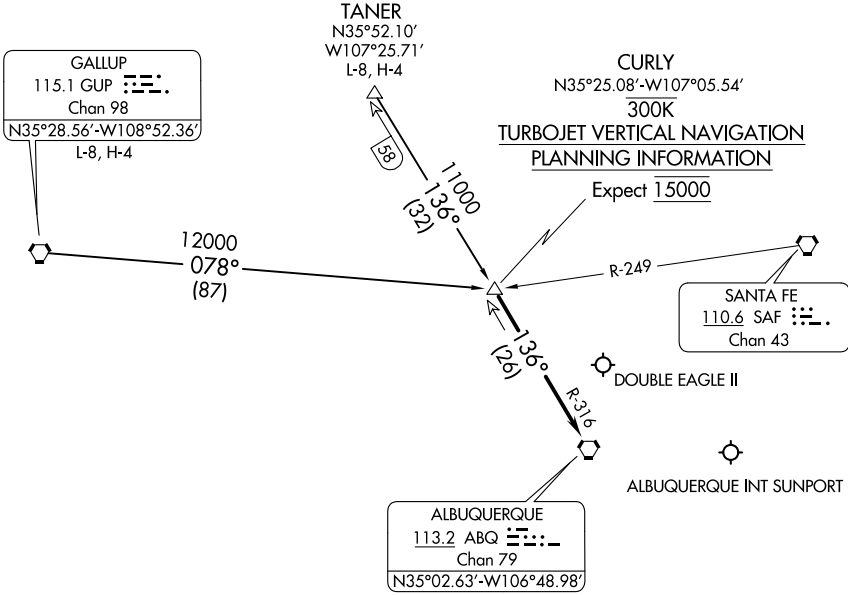


# CURLY THREE ARRIVAL

AL-12 (FAA)

ALBUQUERQUE, NEW MEXICO

ALBUQUERQUE APP CON  
 127.4 253.5  
 ABQ D-ATIS  
 118.0 257.7  
 AEG ATIS  
 119.025



SW-1, 27 JAN 2022 to 24 FEB 2022

SW-1, 27 JAN 2022 to 24 FEB 2022

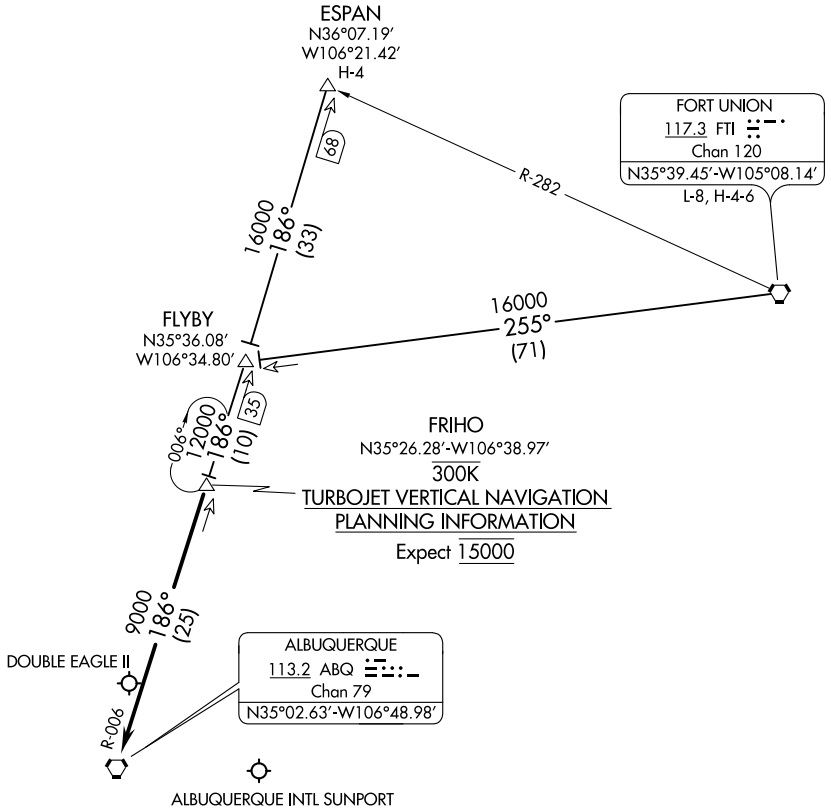
NOTE: Chart not to scale.

## ARRIVAL ROUTE DESCRIPTION

GALLUP TRANSITION (GUP.CURLY3): From over GUP VORTAC on GUP R-078 to CURLY.  
 Thence. . . .

TANER TRANSITION (TANER.CURLY3): From over TANER on ABQ R-316 to CURLY.  
 Thence. . . .

. . . .From over CURLY on ABQ R-316 to ABQ VORTAC. Expect vectors to final approach course after passing CURLY.



NOTE: DME required.

NOTE: Chart not to scale.

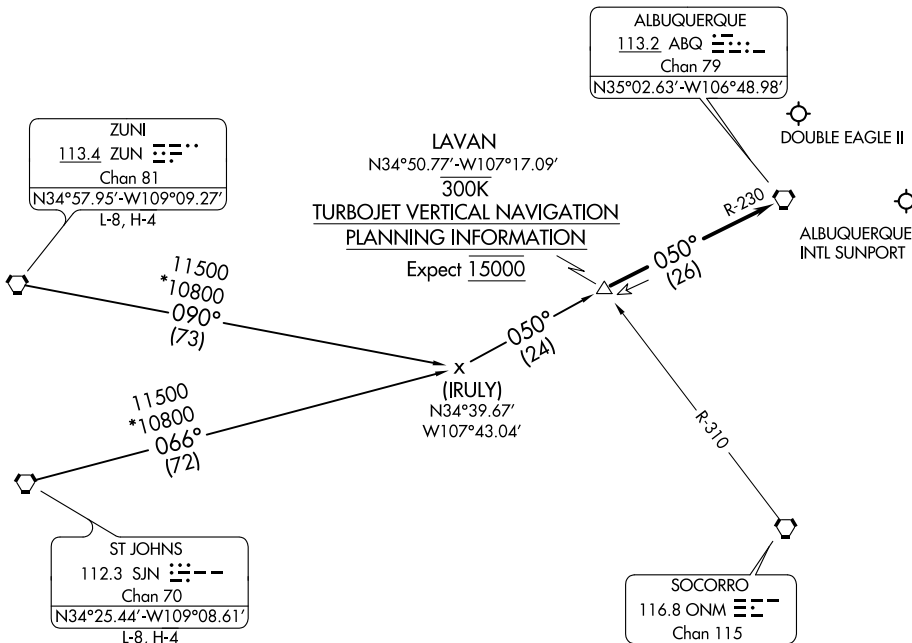
ESPAN TRANSITION (ESPAN.FRIHO4): From over ESPAN DME fix via ABQ R-006 to FRIHO DME fix, thence. . . .

FORT UNION TRANSITION (FTI.FRIHO4): From over FTI VORTAC via FTI R-255 and ABQ R-006 to FRIHO DME fix, thence. . . .

. . . .From over FRIHO DME fix via ABQ R-006 to ABQ VORTAC. Expect vectors to final approach course after passing FRIHO DME fix.

# LAVAN THREE ARRIVAL

ALBUQUERQUE APP CON  
 123.9 354.1  
 ABQ D-ATIS  
 118.0 257.7  
 AEG ATIS  
 119.025  
 GND CON  
 121.9 348.6  
 ALBUQUERQUE TOWER  
 120.3 351.9



SW-1, 27 JAN 2022 to 24 FEB 2022

SW-1, 27 JAN 2022 to 24 FEB 2022

NOTE: Chart not to scale.

## ARRIVAL ROUTE DESCRIPTION

ST. JOHNS TRANSITION (SJN.LAVAN3): From over SJN VORTAC via SJN R-066 and ABQ R-230 to LAVAN DME/INT. Thence. . . .

ZUNI TRANSITION (ZUN.LAVAN3): From over ZUN VORTAC via ZUN R-090 and ABQ R-230 to LAVAN DME/INT. Thence. . . .

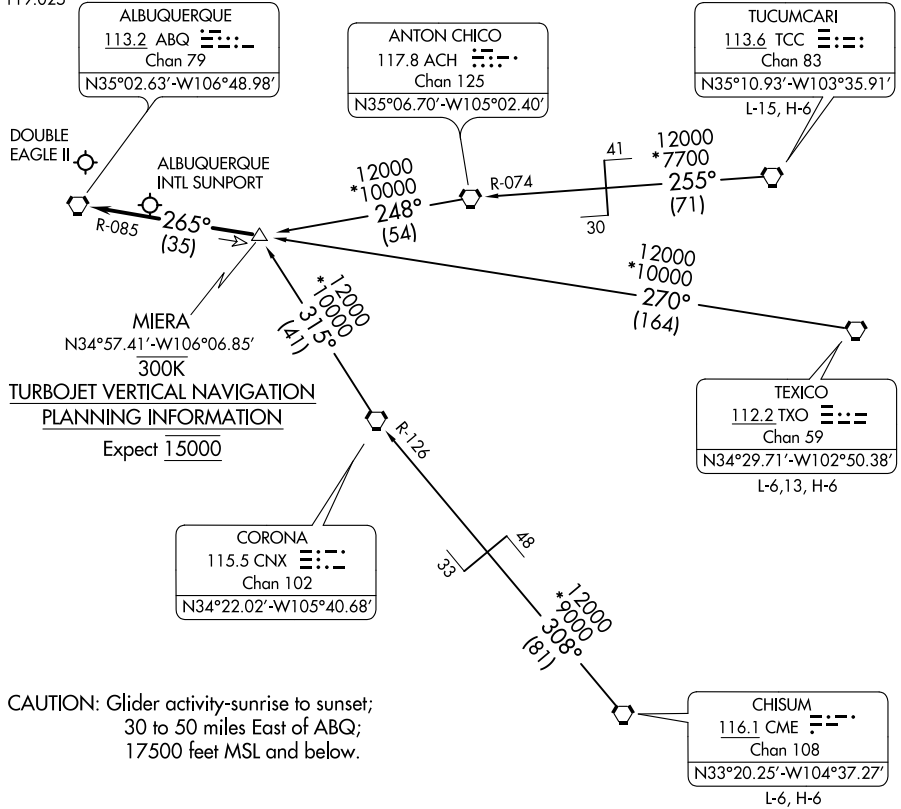
. . . .From over LAVAN fix/INT via ABQ R-230 to ABQ VORTAC. Expect vectors to final approach course after passing LAVAN.

# MIERA TWO ARRIVAL

AL-12 (FAA)

ALBUQUERQUE, NEW MEXICO

ALBUQUERQUE APP CON  
 123.9 354.1  
 ABQ D-ATIS  
 118.0 257.7  
 AEG ATIS  
 119.025



SW-1, 27 JAN 2022 to 24 FEB 2022

SW-1, 27 JAN 2022 to 24 FEB 2022

## ARRIVAL ROUTE DESCRIPTION

**CHISUM TRANSITION (CME.MIERA2):** From over CME VORTAC via CME R-308 and CNX R-126 to CNX VORTAC, then via CNX R-315 to MIERA DME fix. Thence. . .

**TEXICO TRANSITION (TXO.MIERA2):** From over TXO VORTAC via TXO R-270 and ABQ R-085 to MIERA DME fix. Thence. . .

**TUCUMCARI TRANSITION (TCC.MIERA2):** From over TCC VORTAC via TCC R-255 and ACH R-074 to ACH VORTAC, then via ACH R-248 to MIERA DME fix. Thence. . .

. . . From over MIERA DME fix via ABQ R-085 to ABQ VORTAC. Expect vectors to final approach course after passing MIERA DME fix.

# MIERA TWO ARRIVAL

ALBUQUERQUE, NEW MEXICO