

APP CRS 271°	Rwy Idg TDZE Apt Elev	3515 737 737
------------------------	-----------------------------	---

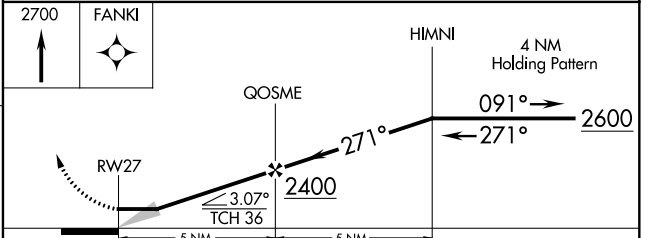
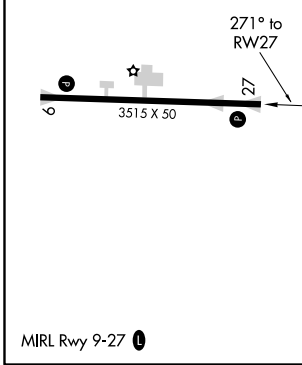
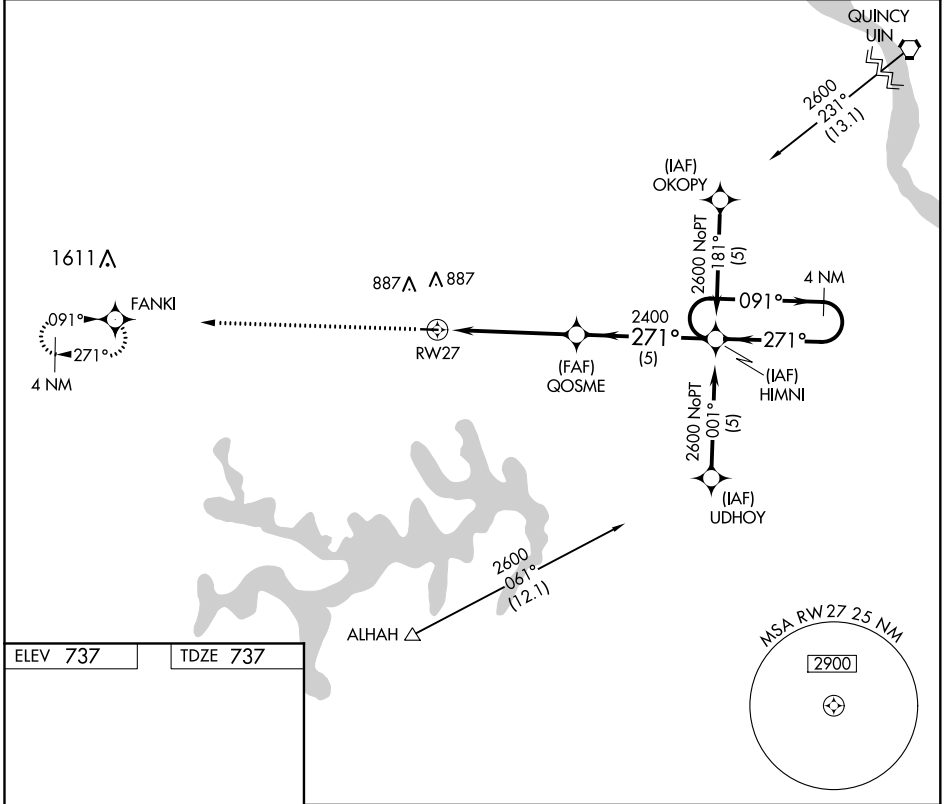
RNAV (GPS) RWY 27

CPT BEN SMITH AIRFIELD-MONROE CITY (K52)

NA Use Quincy, IL altimeter setting. DME/DME RNP-0.3 NA. Procedure NA at night. Rwy 9, 27 helicopter visibility reduction below 1 SM NA.

MISSED APPROACH: Climb to 2700 direct FANKI and hold.

UIN ASOS 121.425	KANSAS CITY CENTER 126.225 317.775	UNICOM 122.8 (CTAF)
----------------------------	--	-------------------------------



CATEGORY	A	B	C	D
LNAV MDA	1240-1	503 (600-1)	1240-1½ 503 (600-1½)	NA
CIRCLING	1380-1	643 (700-1)	1380-1¾ 643 (700-1¾)	NA

NC-3, 02 DEC 2021 to 30 DEC 2021

NC-3, 02 DEC 2021 to 30 DEC 2021

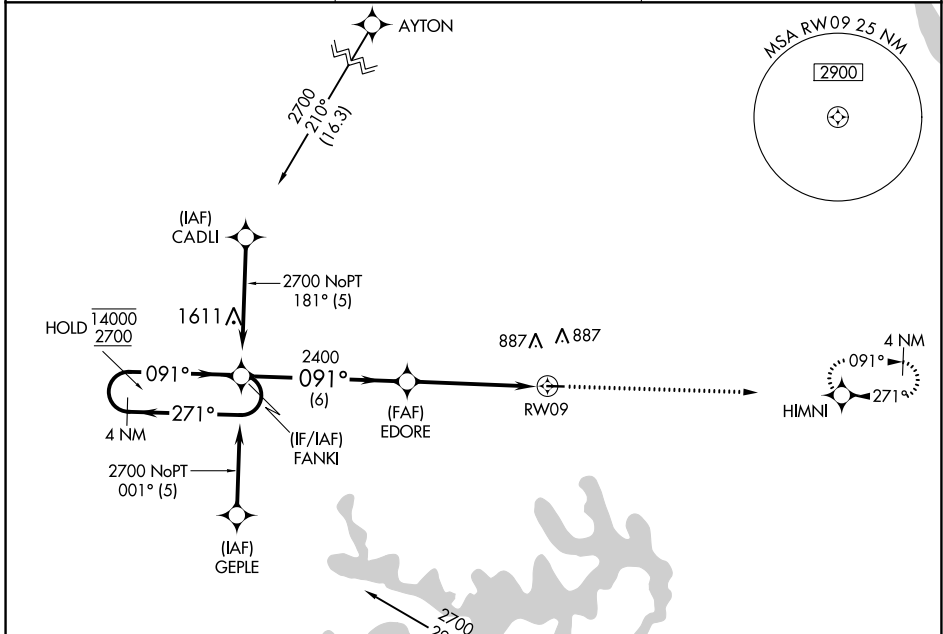
APP CRS	Rwy Idg	3515
091°	TDZE	737
	Apt Elev	737

RNAV (GPS) RWY 9

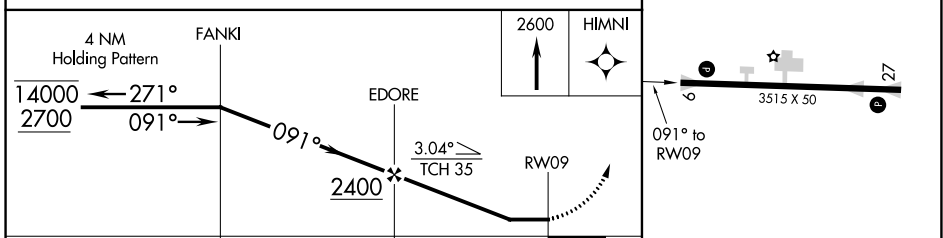
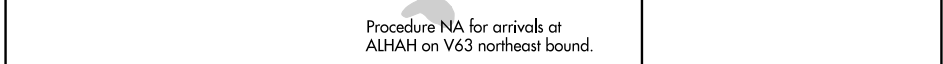
CPT BEN SMITH AIRFIELD-MONROE CITY (K52)

RNP APCH-GPS.	MISSED APPROACH: Climb to 2600 direct HIMNI and hold.
<p>▼ Procedure NA at night. Rwy 9 helicopter visibility reduction below 1 SM NA. Use Quincy, IL altimeter setting.</p> <p>▲ NA</p>	

UIN ASOS 121.425	KANSAS CITY CENTER 126.225 317.775	UNICOM 122.8 (CTAF) 1
----------------------------	--	---------------------------------



ELEV 737	TDZE 737
----------	----------



CATEGORY	A	B	C	D
LNVA MDA	1280-1	543 (600-1)	1280-1½ 543 (600-1½)	NA
C CIRCLING	1380-1	643 (700-1)	1380-1¾ 643 (700-1¾)	NA

MIRL Rwy 9-27 1

NC-3, 02 DEC 2021 to 30 DEC 2021

NC-3, 02 DEC 2021 to 30 DEC 2021

VORTAC UIN 113.6 Chan 83	APP CRS 233°	Rwy Idg TDZE Apt Elev	N/A N/A 737
--	------------------------	-----------------------------	--

VOR-A

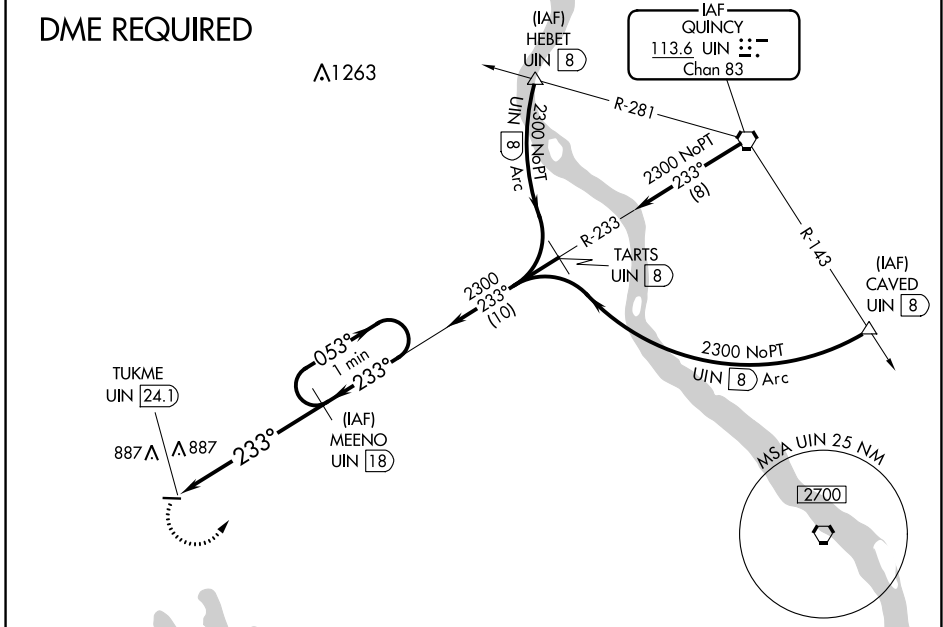
CPT BEN SMITH AIRFIELD-MONROE CITY (K52)

▼ Use Quincy, IL altimeter setting. DME required.
▲ NA Procedure NA at night. Rwy 9, 27 helicopter visibility reduction below 1 SM NA.

MISSED APPROACH: Climbing left turn to 2300 via UIN R-233 to MEENO/18 DME and hold.

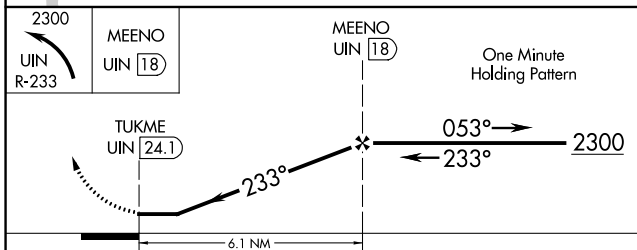
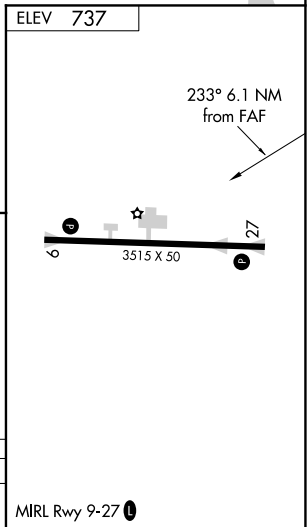
UIN ASOS 121.425	KANSAS CITY CENTER 126.225 317.775	UNICOM 122.8 (CTAF) 0
----------------------------	--	---------------------------------

DME REQUIRED



NC-3, 02 DEC 2021 to 30 DEC 2021

NC-3, 02 DEC 2021 to 30 DEC 2021



CATEGORY	A	B	C	D
CIRCLING	1380-1 643 (700-1)	1380-1¼ 643 (700-1¼)	1380-1½ 643 (700-1½)	NA

VOR-A