

WAAS CH <b>81807</b> <b>W36A</b>	APP CRS <b>356°</b>	Rwy Idg <b>7339</b> TDZE <b>1066</b> Apt Elev <b>1087</b>
--	------------------------	---

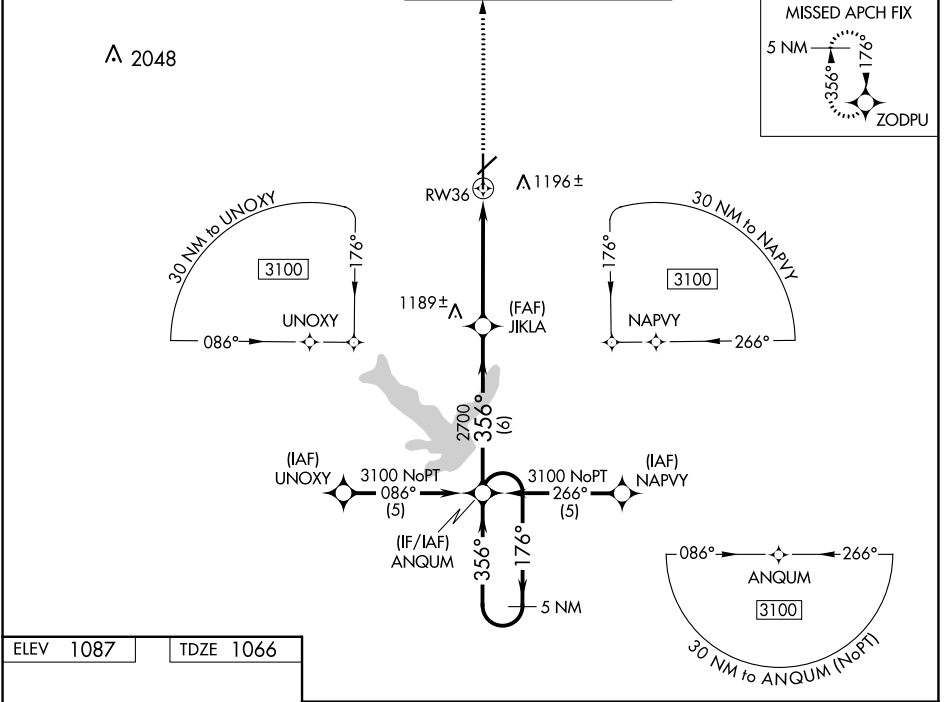
# RNAV (GPS) RWY 36

NEW CENTURY AIRCENTER (IXD)

**⚠** DME/DME RNP-0.3 NA. For inop MALS, increase LNAV Cat D visibility to 1 1/2 and LPV visibility to 1 all Cats. If local altimeter setting not received, use Johnson County Exec altimeter setting and increase all DA/MDAs 20 feet. VDP NA with Johnson County Exec altimeter setting.

**MALS**  
 MISSED APPROACH: Climb to 3100 direct ZODPU and hold.

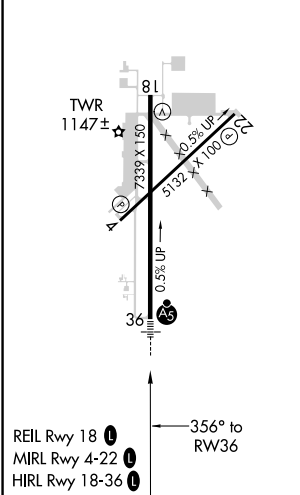
ASOS <b>135.325</b>	KANSAS CITY APP CON <b>118.9 251.075</b>	NEW CENTURY TOWER * <b>133.0 (CTAF) 0</b>	GND CON <b>124.3</b>	UNICOM <b>122.95</b>
------------------------	---	--	-------------------------	-------------------------



NC-2, 22 FEB 2024 to 21 MAR 2024

NC-2, 22 FEB 2024 to 21 MAR 2024

ELEV <b>1087</b>	TDZE <b>1066</b>
------------------	------------------



5 NM Holding Pattern		ANQUM		3100		ZODPU	
3100 ← 176°		→ 356°		356°		*INAV only.	
GP 3.00°		TCH 50		2700		*1.1 NM to RWY 36	
		6 NM		3.9 NM		1.1 NM	
CATEGORY	A	B	C	D			
LPV DA	1316-1/2			250 (300-1/2)			
LNAV/VNAV DA	NA						
LNAV MDA	1440-1/2		374 (400-1/2)		1440-1		374 (400-1)
<b>C</b> CIRCLING	1560-1		473 (500-1)		1580-1/2		1640-2
					493 (500-1/2)		553 (600-2)