

WAAS CH <b>86439</b> <b>W04A</b>	APP CRS <b>043°</b>	Rwy Idg TDZE Apt Elev	<b>5132</b> <b>1080</b> <b>1087</b>
----------------------------------------	------------------------	-----------------------------	-------------------------------------------

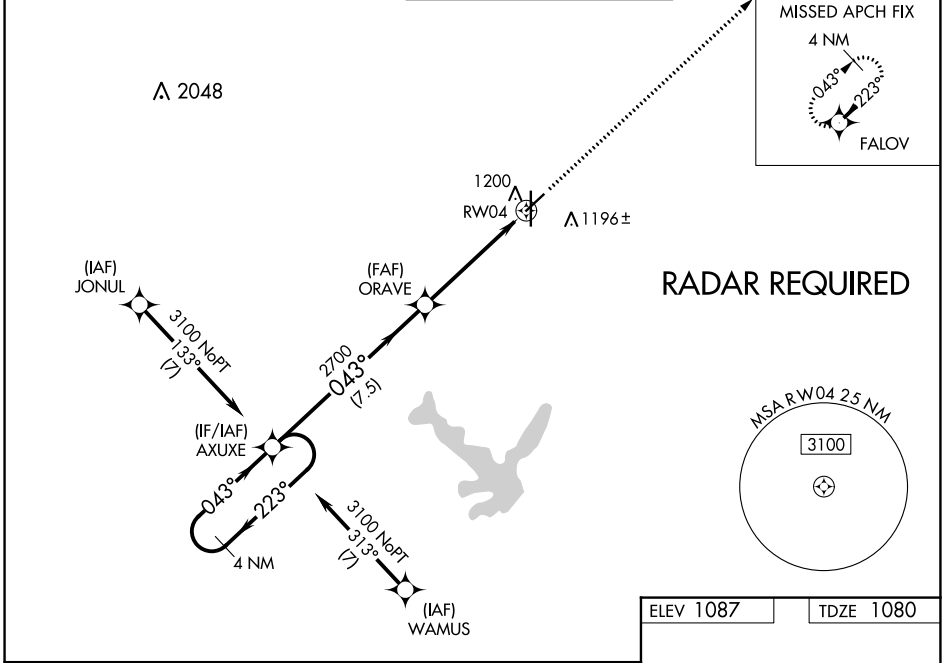
# RNAV (GPS) RWY 4

NEW CENTURY AIRCENTER (IXD)

**⚠** For uncompensated Baro-VNAV systems, LNAV/VNAV NA below -17°C (-2°F) or above 54°C (130°F). Baro-VNAV and VDP NA when using Johnson County Exec altimeter setting. DME/DME RNP-0.3 NA. When local altimeter setting not received, use Johnson County Exec altimeter setting; increase LPV DA to 1348 feet and LNAV/VNAV DA to 1448 feet and all MDA 20 feet; increase LNAV Cat C/D visibility 1/8 mile.

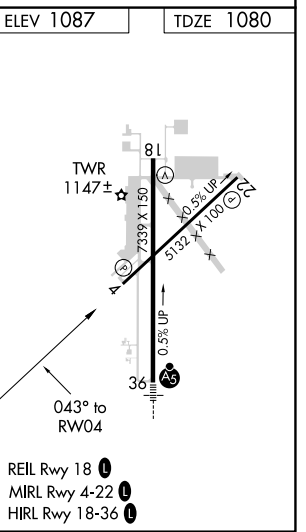
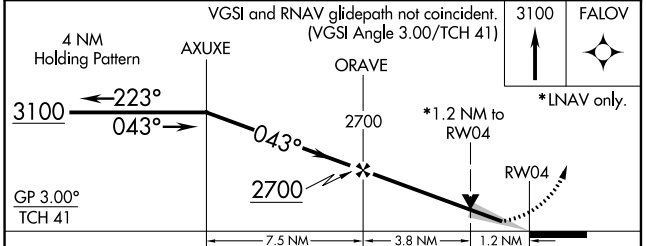
MISSED APPROACH: Climb to 3100 direct FALOV and hold.

ASOS <b>135.325</b>	KANSAS CITY APP CON <b>118.9 251.075</b>	NEW CENTURY TOWER ★ <b>133.0 (CTAF) 0</b>	GND CON <b>124.3</b>	UNICOM <b>122.95</b>
------------------------	---------------------------------------------	----------------------------------------------	-------------------------	-------------------------



NC-2, 22 FEB 2024 to 21 MAR 2024

NC-2, 22 FEB 2024 to 21 MAR 2024



CATEGORY	A	B	C	D
LPV DA	1330-1 250 (300-1)			
LNAV/VNAV DA	1430-1¼ 350 (400-1¼)			
LNAV MDA	1500-1	420 (500-1)	1500-1½	420 (500-1½)
<b>C</b> CIRCLING	1560-1	473 (500-1)	1580-1½	1640-2 553 (600-2)

- REIL Rwy 18 **0**
- MIRL Rwy 4-22 **0**
- HIRL Rwy 18-36 **0**