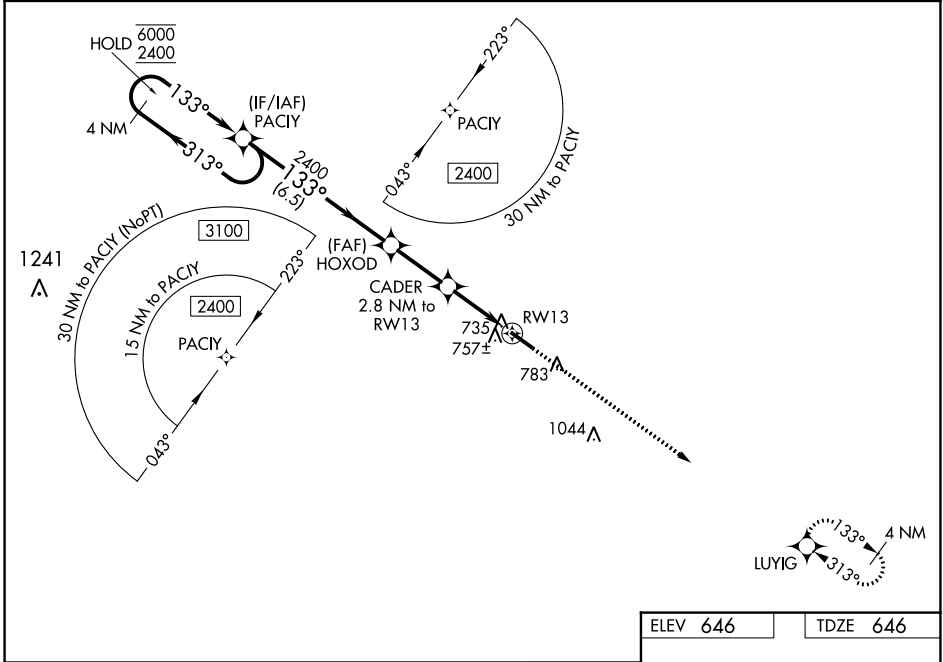


WAAS CH 62809 W13A	APP CRS 133°	Rwy Idg 5020 TDZE 646 Apt Elev 646
--	------------------------	---

RNAV (GPS) RWY 13

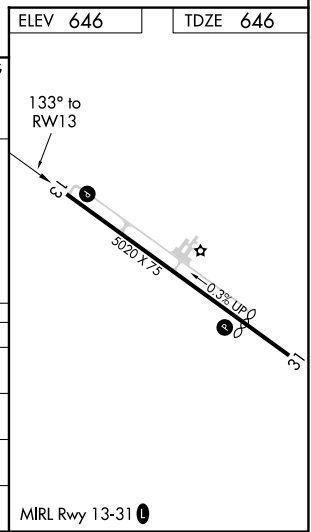
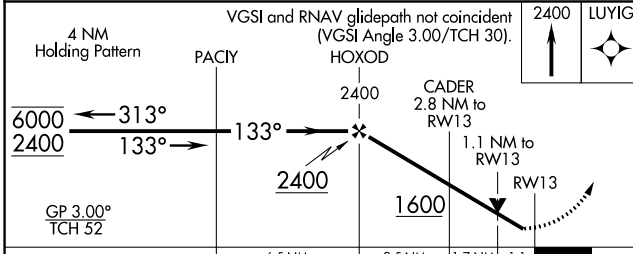
WASHINGTON/WILKES COUNTY (IIY)

RNP APCH-GPS.		MISSED APPROACH: Climb to 2400 direct LUYIG and hold.
AWOS-3 118.375	AUGUSTA APP CON* 126.8 270.3	
		UNICOM 122.7 (CTAF)



SE-4, 22 FEB 2024 to 21 MAR 2024

SE-4, 22 FEB 2024 to 21 MAR 2024



CATEGORY	A	B	C	D
LPV DA	958-7/8	312 (400-7/8)		NA
LNAV/VNAV DA	907-7/8	261 (300-7/8)		NA
LNAV MDA	1020-1	374 (400-1)		NA
CIRCLING	1080-1 434 (500-1)	1100-1 454 (500-1)	1100-1½ 454 (500-1½)	NA

MIRL Rwy 13-31