

WAAS CH 86312 W03A	APP CRS 033°	Rwy Idg TDZE Apt Elev	6827 3412 3449
---------------------------------	------------------------	-----------------------------	---

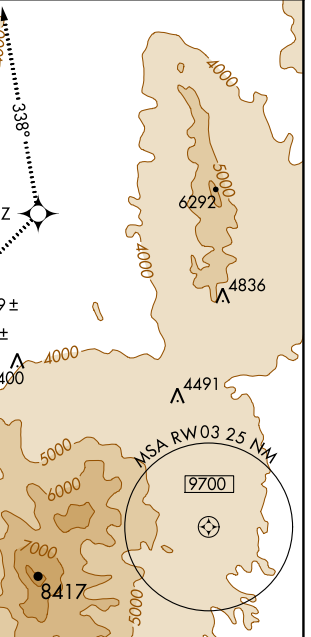
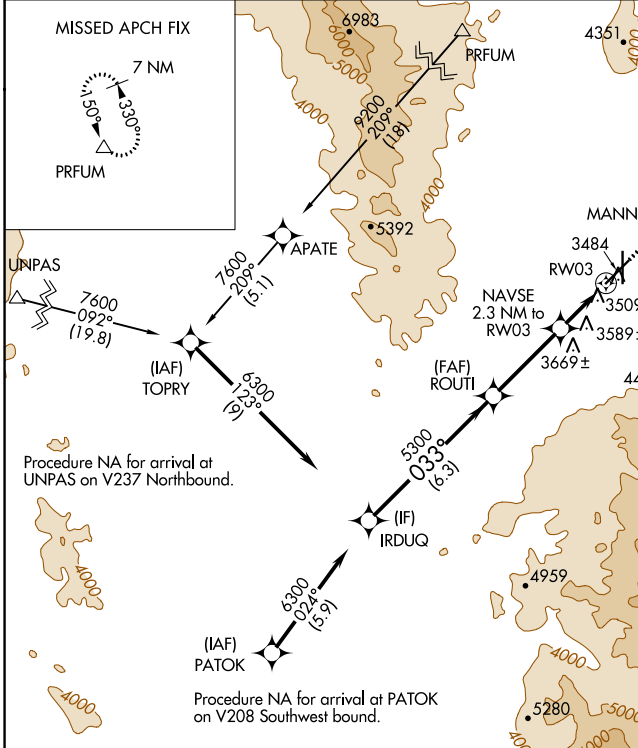
RNAV (GPS) RWY 3

KINGMAN (IGM)

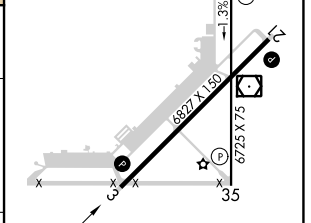
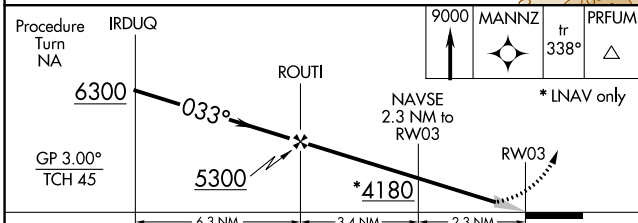
⚠ For uncompensated Baro-VNAV systems, LNAV/VNAV NA below -21°C (-5°F) or above 42°C (107°F). DME/DME RNP-0.3 NA.
⚠ Circling NA for Cat D southeast of Rwy 3-21. Circling Rwy 35 NA at night.

MISSED APPROACH: Climb to 9000 direct MANNZ and via track 338° to PRFUM and hold, continue climb-in-hold to 9000.

ASOS 119.275	LOS ANGELES CENTER 124.85 319.2	UNICOM 122.8 (CTAF) 0
------------------------	---	---------------------------------



ELEV 3449	D TDZE 3412
-----------	--------------------



CATEGORY	A	B	C	D
LPV DA		3713-1	301 (400-1)	
LNAV/VNAV DA		3952-2	540 (600-2)	
LNAV MDA	3840-1	428 (500-1)	3840-1½ 428 (500-1½)	3840-1½ 428 (500-1½)
CIRCLING	3980-1 531 (600-1)	4100-1 651 (700-1)	4420-3	971 (1000-3)

REIL Rwy 3 and 21 **0**
 MIRL Rwy 3-21 and 17-35 **0**

SW-4, 22 FEB 2024 to 21 MAR 2024

SW-4, 22 FEB 2024 to 21 MAR 2024