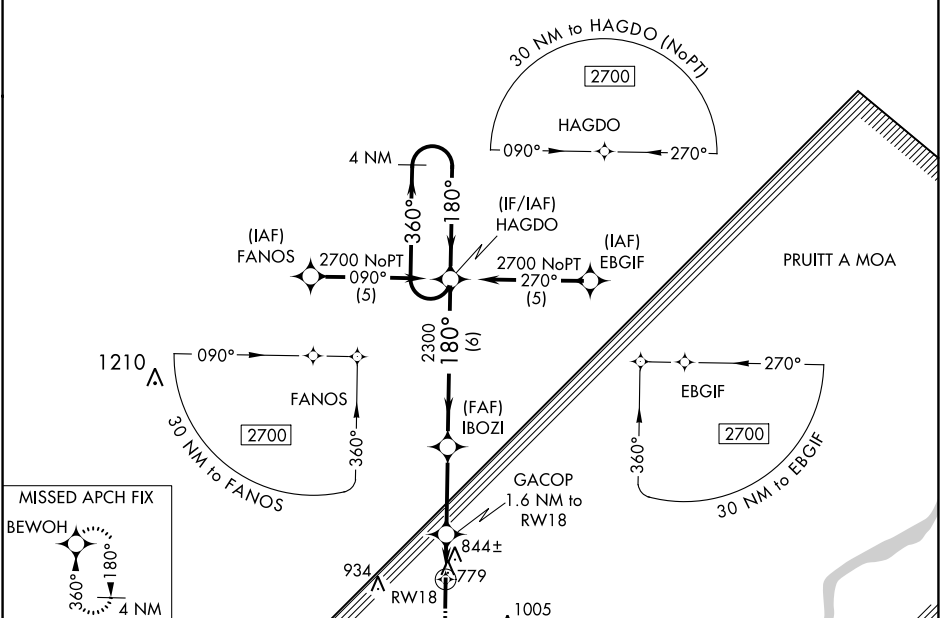


WAAS CH 45912 W18A	APP CRS 180°	Rwy Idg TDZE Apt Elev	5905 734 734
--	------------------------	-----------------------------	---

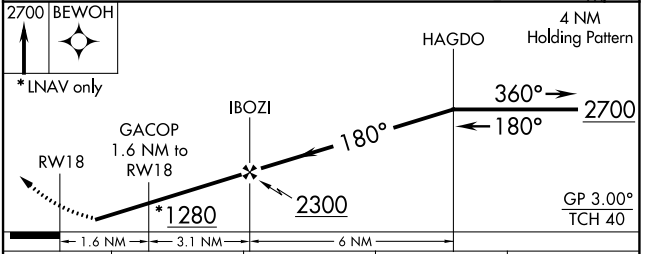
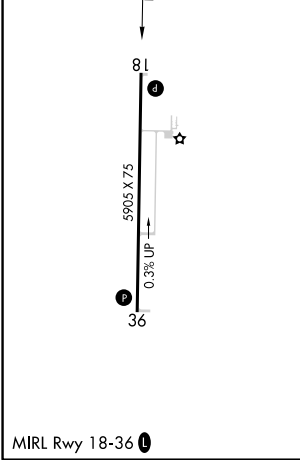
RNAV (GPS) RWY 18

MOUNT STERLING MUNI (I63)

RNP APCH.		MISSED APPROACH: Climb to 2700 direct BEWOH and hold.	
AWOS-3PT 118.325	UIN ASOS 121.425	KANSAS CITY CENTER 126.225 317.775	UNICOM 122.8 (CTAF)



ELEV 734	TDZE 734
----------	----------



CATEGORY	A	B	C	D
LPV DA		1066-1¼	332 (400-1¼)	
LNAV/VNAV DA		1191-1¾	457 (500-1¾)	
LNAV MDA	1160-1	426 (500-1)	1160-1¼	426 (500-1¼)
CIRCLING	1200-1	466 (500-1)	1360-1¾ 626 (700-1¾)	1360-2 626 (700-2)

EC-3, 22 FEB 2024 to 21 MAR 2024

EC-3, 22 FEB 2024 to 21 MAR 2024

WAAS CH 97712 W36A	APP CRS 360°	Rwy Idg TDZE Apt Elev	5905 725 734
--	------------------------	-----------------------------	---

RNAV (GPS) RWY 36

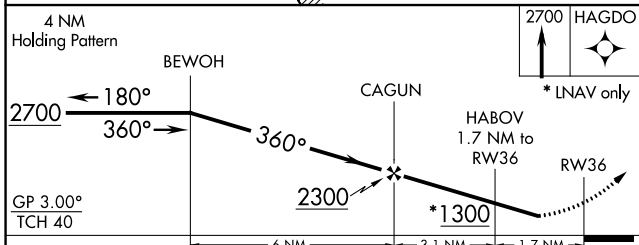
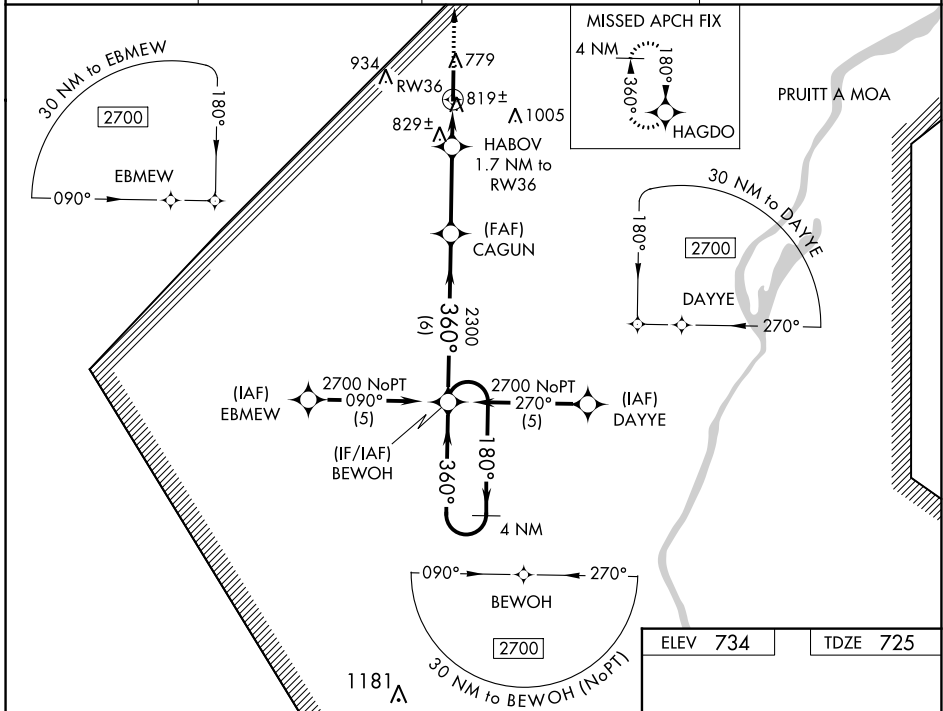
MOUNT STERLING MUNI (I63)

RNP APCH.

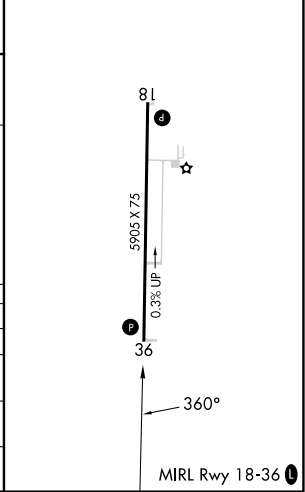
Baro-VNAV NA. Rwy 36 helicopter visibility reduction below 3/4 SM NA.
When local altimeter setting not received, use Quincy altimeter setting: increase Circling Cat C and D MDA 60 feet and visibility Circling Cat C and D 1/4 SM.

MISSED APPROACH: Climb to 2700 direct HAGDO and hold.

AWOS-3PT 118.325	UIN ASOS 121.425	KANSAS CITY CENTER 126.225 317.775	UNICOM 122.8 (CTAF) 0
----------------------------	----------------------------	--	---------------------------------



ELEV 734	TDZE 725
----------	----------



CATEGORY	A	B	C	D
LPV DA		1074-1 1/4	349 (400-1 1/4)	
LNAV/VNAV DA		1136-1 1/2	411 (500-1 1/2)	
LNAV MDA	1140-1	415 (500-1)	1140-1 1/4	415 (500-1 1/4)
CIRCLING	1200-1	466 (500-1)	1360-1 3/4 626 (700-1 3/4)	1360-2 626 (700-2)

EC-3, 22 FEB 2024 to 21 MAR 2024

EC-3, 22 FEB 2024 to 21 MAR 2024