

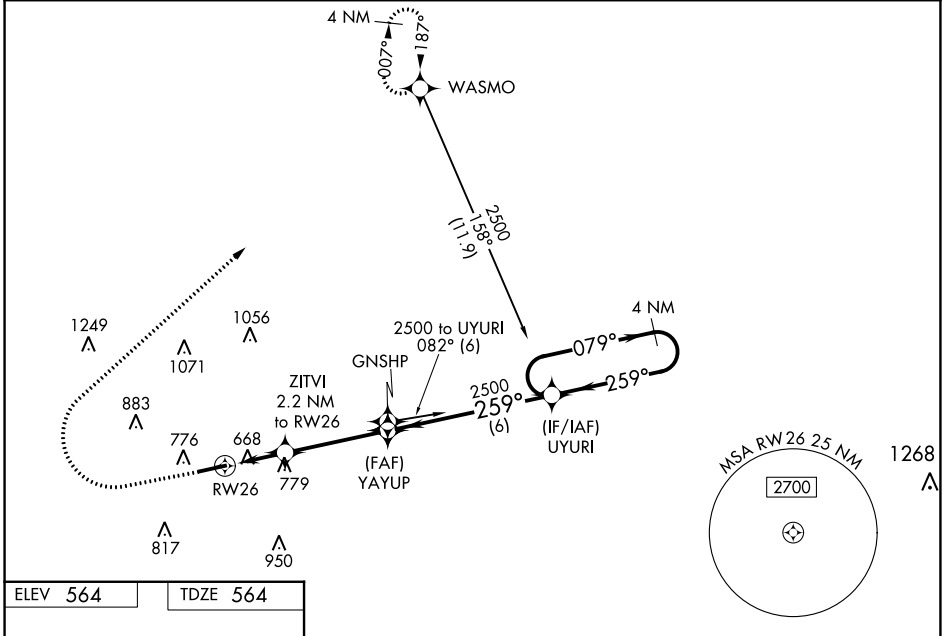
WAAS CH <b>82221</b> <b>W26A</b>	APP CRS <b>259°</b>	Rwy Idg TDZE <b>564</b> Apt Elev <b>564</b>
--	------------------------	---

# RNAV (GPS) RWY 26

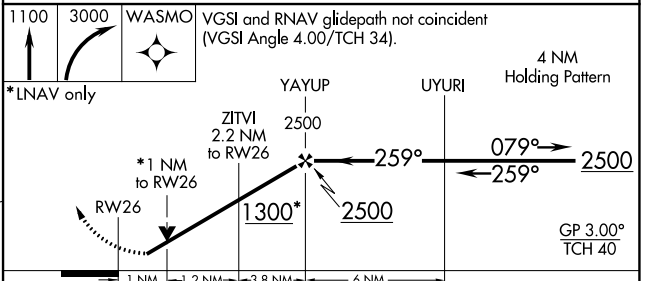
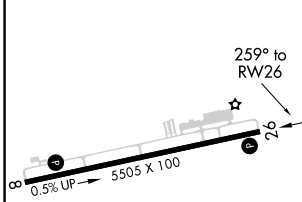
HOPKINSVILLE-CHRISTIAN COUNTY (HVC)

RNP APCH - GPS.	<p><b>⚠ NA</b> Circling Rwy 8 NA at night. For uncompensated Baro-VNAV systems, LNAV/VNAV NA below -16°C or above 54°C. Baro-VNAV and VDP NA when using Clarksville altimeter setting. Helicopter visibility reduction below 3/4 SM NA. When local altimeter setting not received, use Clarksville altimeter setting and increase LPV DA to 851 feet and all visibilities 1/8 SM; increase LNAV/VNAV DA to 1033 feet and all visibilities 1/8 SM; increase all MDAs 40 feet and Circling visibility Cat C 1/4 SM.</p>	<p><b>MISSED APPROACH:</b> Climb to 1100 then climbing right turn to 3000 direct WASMO and hold.</p>
-----------------	---	--

AWOS-3 <b>132.575</b>	CAMPBELL APP CON <b>118.1 269.525</b>	UNICOM <b>122.8 (CTAF) 0</b>
--------------------------	--	---------------------------------



ELEV <b>564</b>	TDZE <b>564</b>
-----------------	-----------------



CATEGORY	A	B	C	D
LPV DA		814-3/4	250 (300-3/4)	
LNAV/VNAV DA		996-1 1/4	432 (500-1 1/4)	
LNAV MDA	1040-1	476 (500-1)	1040-1 3/8	476 (500-1 3/8)
<b>C</b> CIRCLING	1140-1	576 (600-1)	1280-2 716 (800-2)	1320-2 1/2 756 (800-2 1/2)

SE-1, 22 FEB 2024 to 21 MAR 2024

SE-1, 22 FEB 2024 to 21 MAR 2024