

APP CRS	Rwy Idg	N/A
168°	TDZE	N/A
	Apt Elev	489

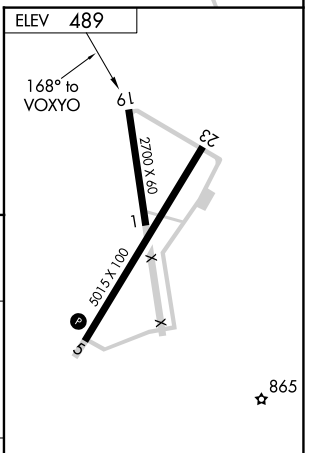
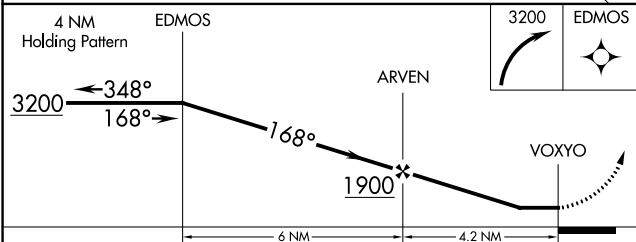
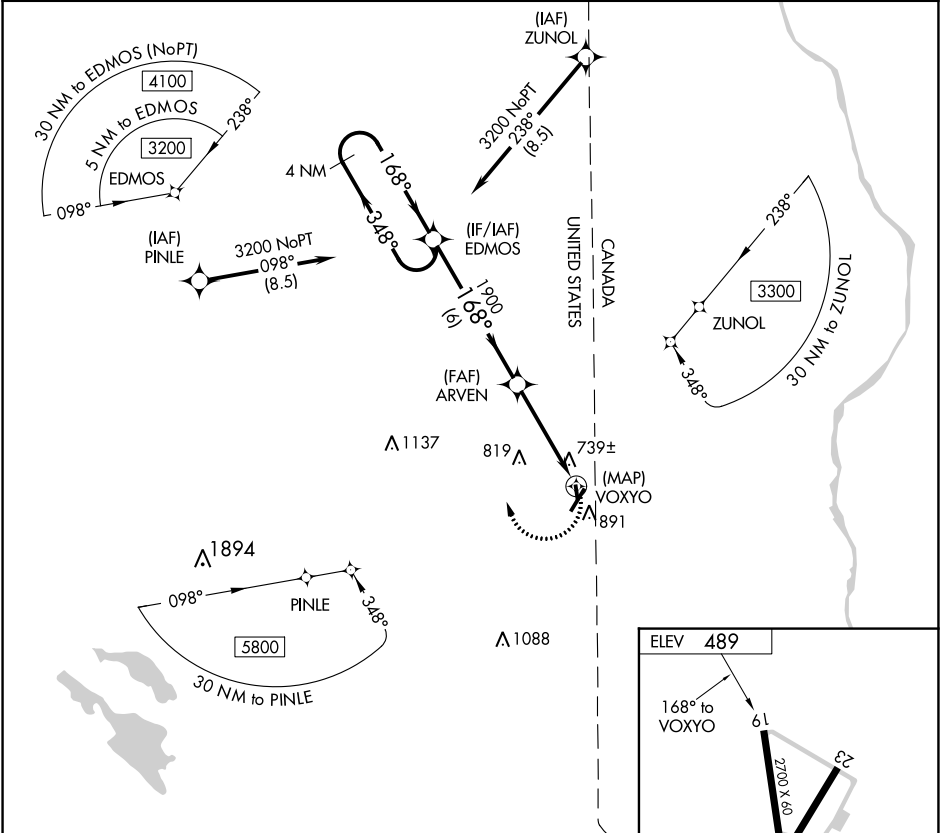
# RNAV (GPS)-A

HOULTON INTL (HUL)

**⚠** When local altimeter setting not received, use Presque Isle altimeter setting and increase all MDA 100 feet and visibility Cat C ¼ SM. Circling NA southeast of Rwy 5-23. DME/DME RNP-0.3 NA.

**MISSED APPROACH:** Climbing right turn to 3200 direct EDMOS and hold.

ASOS <b>132.025</b>	BOSTON CENTER <b>120.25 346.4</b>	UNICOM <b>122.8 (CTAF)</b>
------------------------	--------------------------------------	-------------------------------



CATEGORY	A	B	C	D
CIRCLING	1080-1	591 (600-1)	1120-1¾ 631 (700-1¾)	NA

MIRL Rwy 5-23 **⓪**  
REIL Rwys 5 and 23 **⓪**

NE-1, 22 FEB 2024 to 21 MAR 2024

NE-1, 22 FEB 2024 to 21 MAR 2024