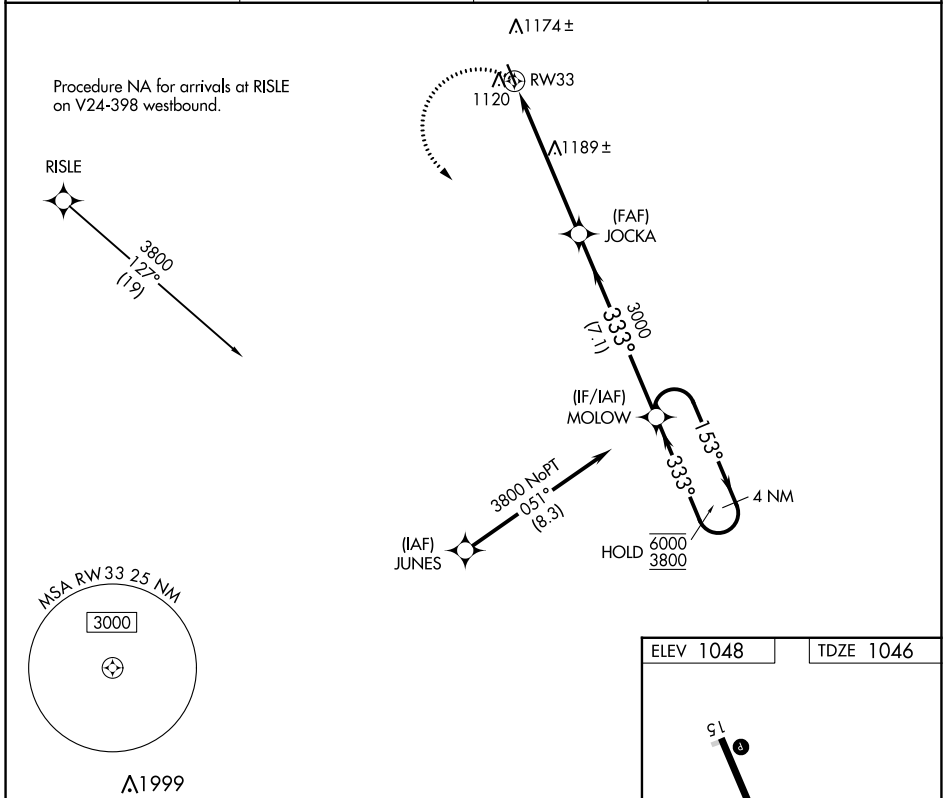


APP CRS <b>333°</b>	Rwy Idg TDZE Apt Elev	<b>3715</b> <b>1046</b> <b>1048</b>
------------------------	-----------------------------	---

# RNAV (GPS) RWY 33

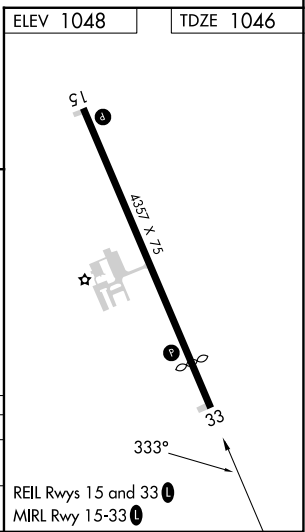
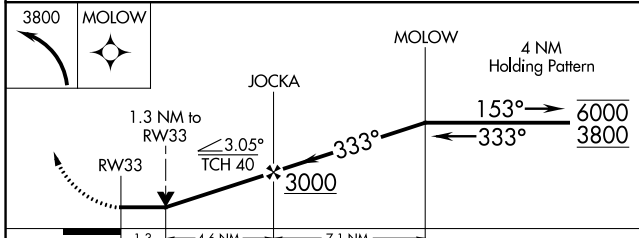
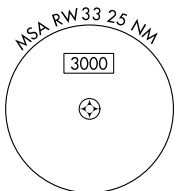
GRANITE FALLS MUNI/LENZEN-ROE-FAGEN MEML FLD (GDB)

RNP APCH.		MISSED APPROACH: Climbing left turn to 3800 direct to MOLOW and hold.	
AWOS-3 <b>120.1</b>	MINNEAPOLIS CENTER <b>127.1 290.2</b>	GCO <b>121.725</b>	UNICOM <b>122.8 (CTAF) 0</b>



NC-1, 22 FEB 2024 to 21 MAR 2024

NC-1, 22 FEB 2024 to 21 MAR 2024



CATEGORY	A	B	C	D
LNNAV MDA	1480-1	434 (500-1)	1480-1¼ 434 (500-1¼)	1480-1½ 434 (500-1½)
CIRCLING	1540-1 492 (500-1)	1580-1 532 (600-1)	1580-1½ 532 (600-1½)	1700-2 652 (700-2)

# RNAV (GPS) RWY 33