

WAAS CH 78016 W33A	APP CRS 332°	Rwy Idg 5796 TDZE 1203 Apt Elev 1229
--	------------------------	---

RNAV (GPS) RWY 33

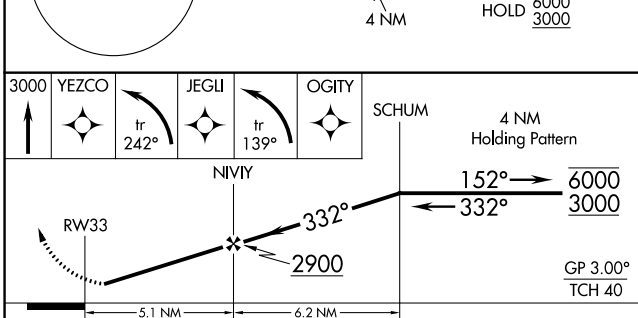
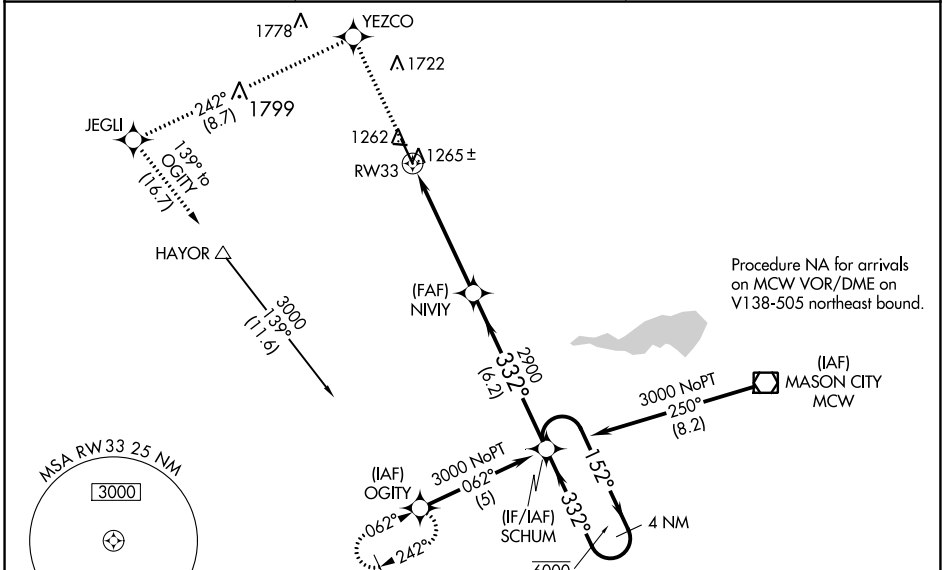
FOREST CITY MUNI (FXY)

RNP APCH.

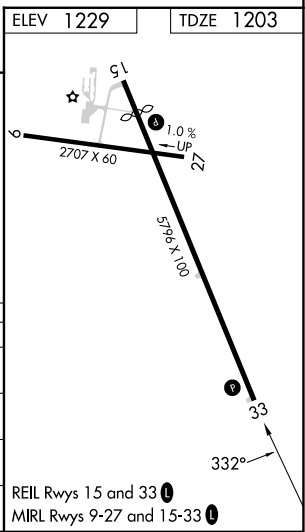
⚠ Rwy 33 helicopter visibility reduction below 1 SM NA. Baro-VNAV NA when using Mason City altimeter setting. For uncompensated Baro-VNAV systems, LNAV/VNAV NA below -17°C or above 54°C. When local altimeter setting not received, use Mason City altimeter setting and increase LPV DA to 1487 feet; LNAV/VNAV DA to 1569 feet; increase all MDA 40 feet. Straight-in Rwy 33 NA at night, Circling Rwy 9, 27, 33 NA at night.

MISSED APPROACH: Climb to 3000 direct YEZCO and left turn on track 242° to JEGLI and left turn on track 139° to OGITY and hold.

AWOS-3 123.925	MINNEAPOLIS CENTER 127.3 257.675	UNICOM 122.8 (CTAF) ①
--------------------------	--	---------------------------------



CATEGORY	A	B	C	D
LPV DA	1453-1 250 (300-1)			
LNAV/VNAV DA	1535-1¼ 332 (400-1¼)			
LNAV MDA	1520-1 317 (300-1)			
CIRCLING	1680-1 451 (500-1)	1760-1 531 (600-1)	2040-2½ 811 (900-2½)	2040-2¾ 811 (900-2¾)



NC-3, 22 FEB 2024 to 21 MAR 2024

NC-3, 22 FEB 2024 to 21 MAR 2024