

VORTAC VNA 116.5 Chan 112	APP CRS 088°	Rwy Idg TDZE Apt Elev N/A N/A 303
---	------------------------	---

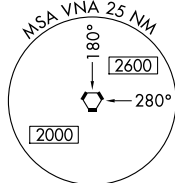
VOR/DME-A
HEART OF GEORGIA RGNL (E2M)

When local altimeter setting not received, use Dublin altimeter setting and increase all MDAs 60 feet, increase Circling Cat C visibility ¼ SM.

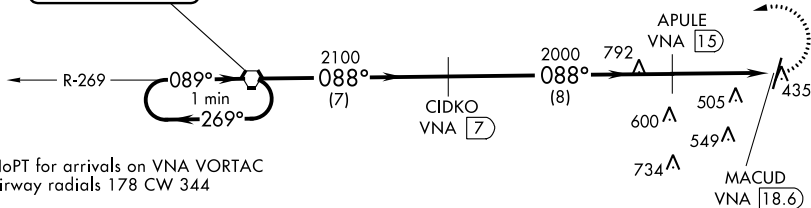
MISSED APPROACH: Climbing left turn to 2100 direct VNA VORTAC and hold.

ATIS 119.425	JACKSONVILLE CENTER 127.575 269.025	HEART OF GEORGIA TOWER ★ 124.55 (CTAF) 0	GND CON 121.175	UNICOM 122.95
------------------------	---	--	---------------------------	-------------------------

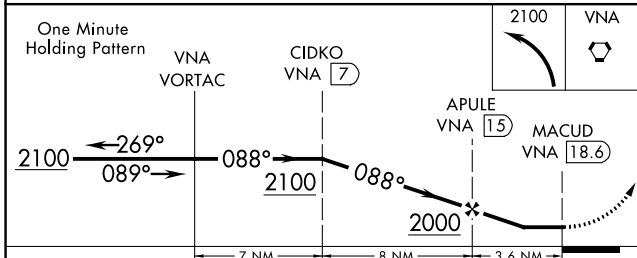
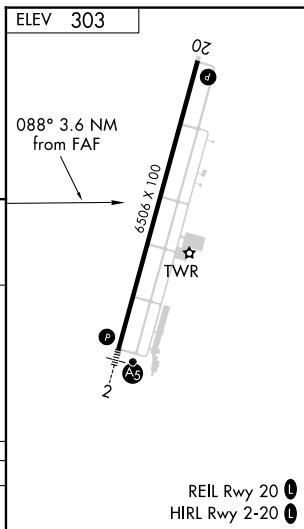
1568



IAF
VIENNA
116.5 VNA
Chan 112



NoPT for arrivals on VNA VORTAC
airway radials 178 CW 344



CATEGORY	A	B	C	D
CIRCLING	760-1 457 (500-1)	820-1 517 (600-1)	900-1½ 597 (600-1½)	900-2 597 (600-2)

REIL Rwy 20
HIRL Rwy 2-20

SE-4, 22 FEB 2024 to 21 MAR 2024

SE-4, 22 FEB 2024 to 21 MAR 2024