

APP CRS	Rwy Idg	4001
224°	TDZE	570
	Apt Elev	570

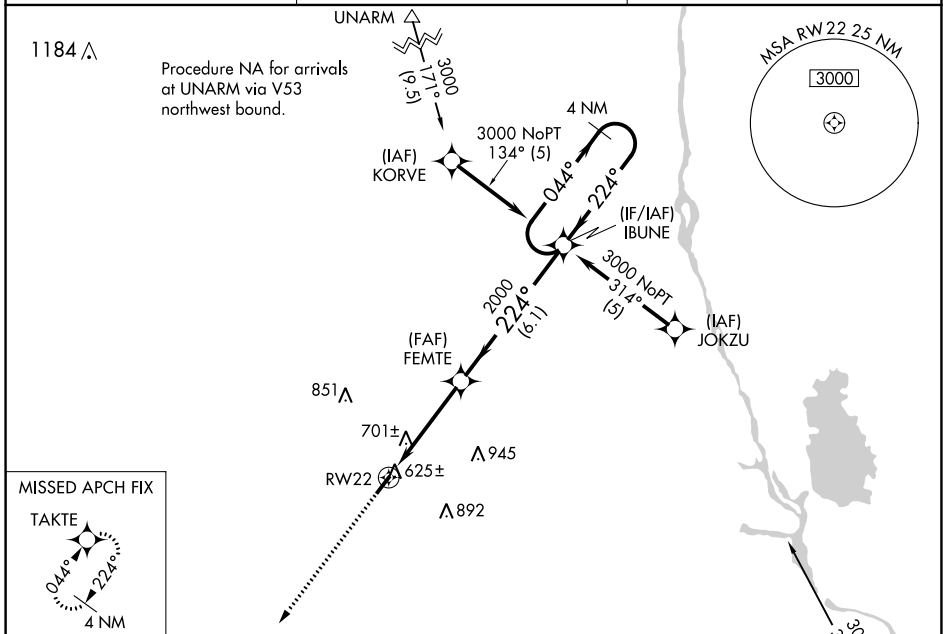
RNAV (GPS) RWY 22

NEWBERRY COUNTY (EOE)

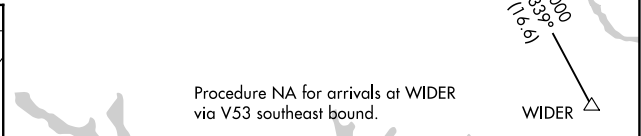
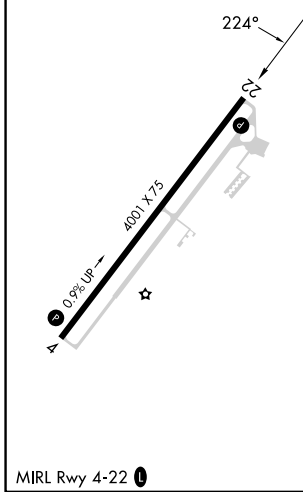
⚠ DME/DME RNP-0.3 NA. When local altimeter setting not received, use Greenwood County altimeter setting and increase all MDA 80 feet. VDP NA when using Greenwood County altimeter setting. Helicopter visibility reduction below 3/4 SM NA.

⚠ MISSED APPROACH: Climb to 3000 direct TAKTE and hold.

AWOS-3 124.275	COLUMBIA APP CON 133.4 285.6	UNICOM 122.8 (CTAF) 0
--------------------------	--	---------------------------------



ELEV 570	TDZE 570
----------	----------



IBUNE	3000	044°	224°
1.1	3.2 NM	6.1 NM	

CATEGORY	A	B	C	D
LNAV MDA	960-1	390 (400-1)	NA	
CIRCLING	1080-1 510 (600-1)	1160-1 590 (600-1)	NA	

SE-2, 22 FEB 2024 to 21 MAR 2024

SE-2, 22 FEB 2024 to 21 MAR 2024