

WAAS CH 53730 W17A	APP CRS 172°	Rwy Idg TDZE 1738 Apt Elev 1739
--	------------------------	---

RNAV (GPS) RWY 17

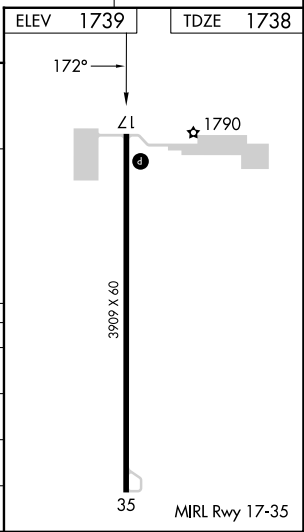
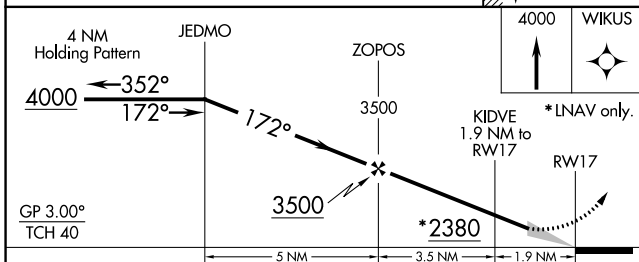
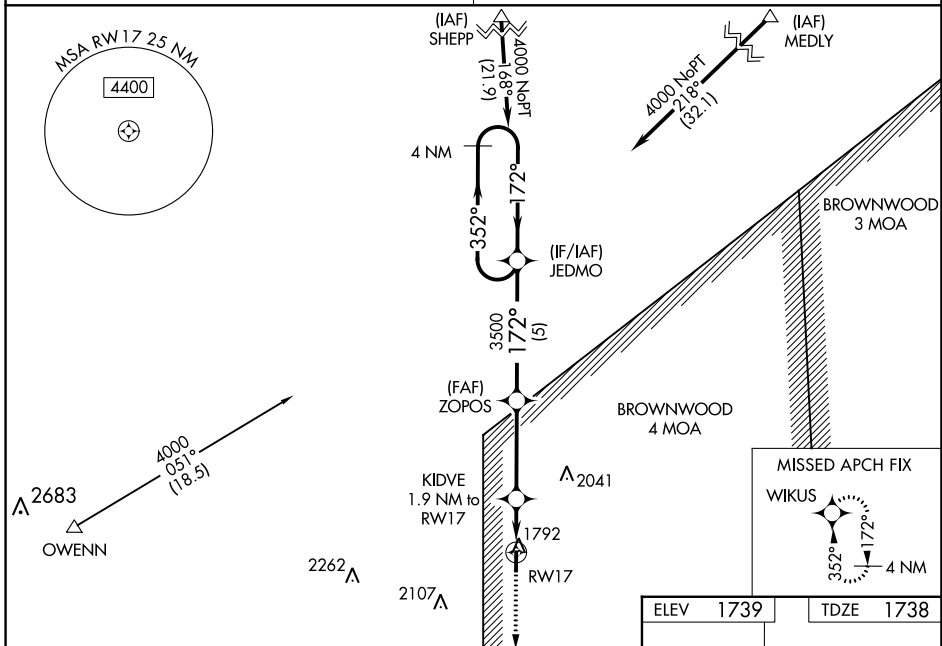
BRUCE FLD (E30)

▼ Baro-VNAV NA.
▲ NA DME/DME RNP-0.3 NA.
 Use San Angelo altimeter setting, when not received use Brady altimeter setting and increase all DA 15 feet and all MDA 20 feet, and increase LPV and LNAV/VNAV all Cats visibility 1/8 mile.

MISSED APPROACH:
 Climb to 4000 direct WIKUS and hold.

SAN ANGELO APP CON ★
125.35 354.1

CTAF
122.9 0



CATEGORY	A	B	C	D
LPV DA	2089-1 1/8	351 (400-1 1/8)		NA
LNAV/VNAV DA	2089-1 1/8	351 (400-1 1/8)		NA
LNAV MDA	2160-1	422 (500-1)		NA
CIRCLING	2220-1	481 (500-1)		NA

SC-3, 22 FEB 2024 to 21 MAR 2024

SC-3, 22 FEB 2024 to 21 MAR 2024

WAAS CH 86228 W35A	APP CRS 352°	Rwy Idg 3909 TDZE 1738 Apt Elev 1738
--	------------------------	---

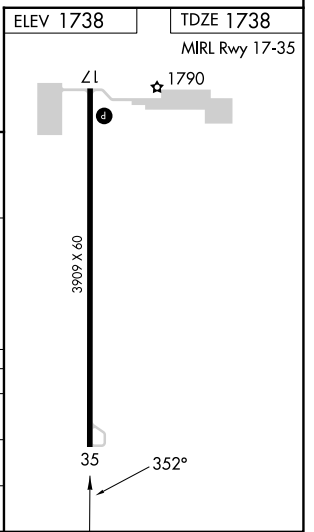
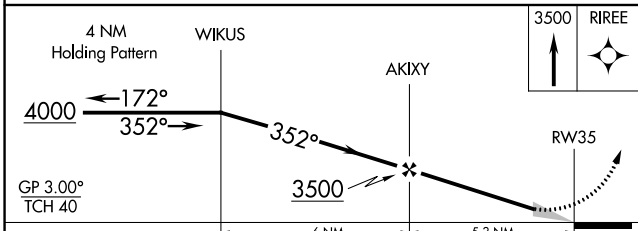
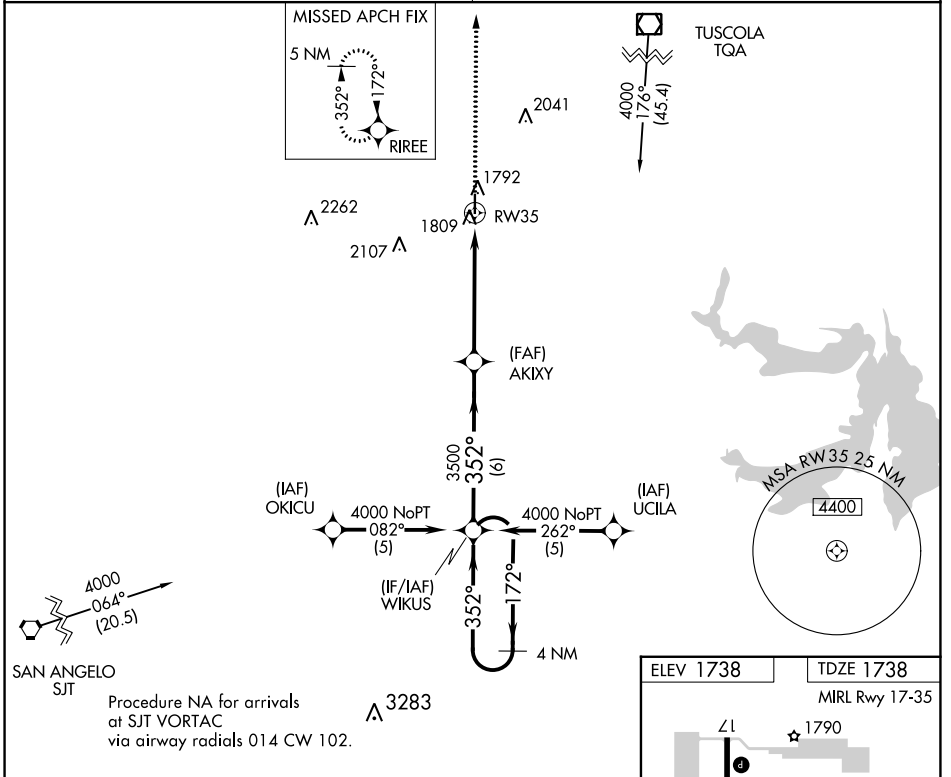
RNAV (GPS) RWY 35

BRUCE FLD (E30)

NA DME/DME RNP-0.3 NA. Use San Angelo Rgnl/Mathis Fld altimeter setting, if not received use Curtis Field altimeter setting and increase all DA/MDAs 20 feet.

MISSED APPROACH: Climb to 3500 direct RIREE and hold.

SAN ANGELO APP CON* **125.35 354.1** CTAF **122.9**



CATEGORY	A	B	C	D
LPV DA	2089-1¼ 351 (400-1¼)			NA
LNAV MDA	2160-1	422 (500-1)	2160-1¼ 422 (500-1¼)	NA
CIRCLING	2220-1	482 (500-1)	2220-1½ 482 (500-1½)	NA

SC-3, 22 FEB 2024 to 21 MAR 2024

SC-3, 22 FEB 2024 to 21 MAR 2024