

ABILENE, TEXAS

# TACAN W RWY 34

TACAN DYS Chan <b>63</b>	APCH CRS <b>338°</b>	Rwy Idg <b>13,500</b> TDZE <b>1788</b> Arprt Elev <b>1790</b>
-----------------------------	-------------------------	---

AL-2 [USAF]

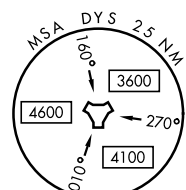
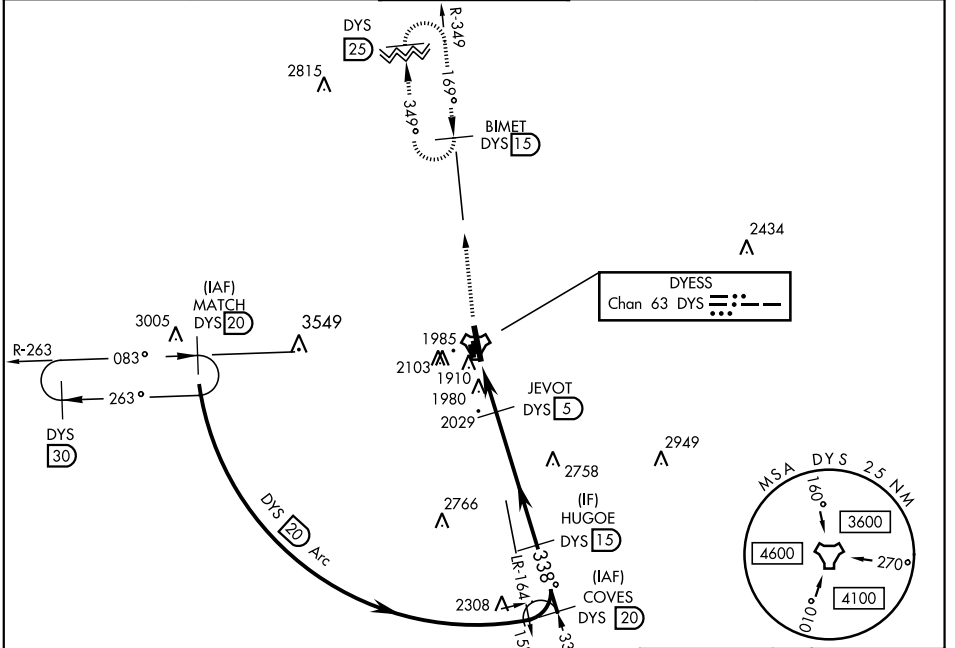
DYESS AFB (KDYS)

\* When ALS inop, increase CAT AB RVR to 55 and vis to 1 mile, CAT CDE vis to 1 1/8 miles.  
 \*\* Circling to other than RWY 16 NA

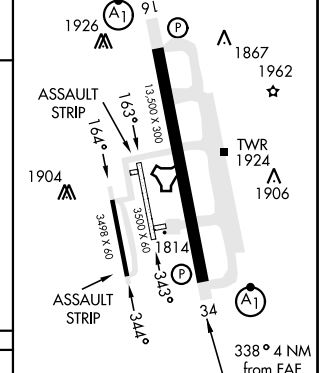
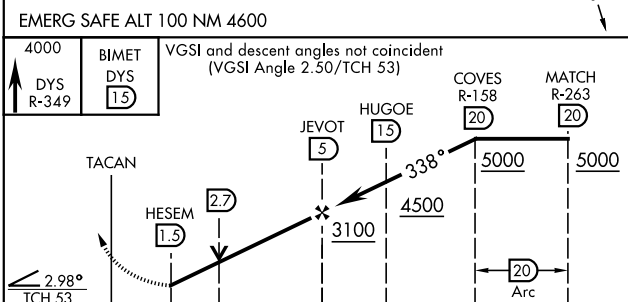


MISSED APPROACH: Climb to 4000 via  
 DYS TACAN R-349 to BIMET and hold.

ATIS ★ <b>269.175</b>	ABILENE APP CON <b>125.0 338.3</b> EAST <b>127.2 282.3</b> WEST	DYESS TOWER <b>133.0 257.675</b>	GND CON <b>118.35 275.8</b>	ASR
--------------------------	---	-------------------------------------	--------------------------------	-----



ELEV 1790	TDZE 1788
LIRL Rwy 164°-344° HIRL Rwy 16-34	



CATEGORY	A	B	C	D	E
S-34 *	2280/24 492 (500-1/2)		2280/50 492 (500-1)		
CIRCLING **	2300-1 510 (600-1)	2320-1 530 (600-1)	2460-1 1/4 670 (700-1 1/4)	2460-2 670 (700-2)	2460-2 1/4 670 (700-2 1/4)

FAF to MAP 3.5 NM					
Knots	60	90	120	150	180
Min:Sec	3:30	2:20	1:45	1:24	1:10

ABILENE, TEXAS

32°25'N-99°51'W

DYESS AFB (KDYS)

Amdt 3 10NOV16

# TACAN W RWY 34

SC-2, 22 FEB 2024 to 21 MAR 2024

SC-2, 22 FEB 2024 to 21 MAR 2024