

See following page for Arrival Route.

RNAV 1 - DME/DME/IRU or GPS.
RADAR required.

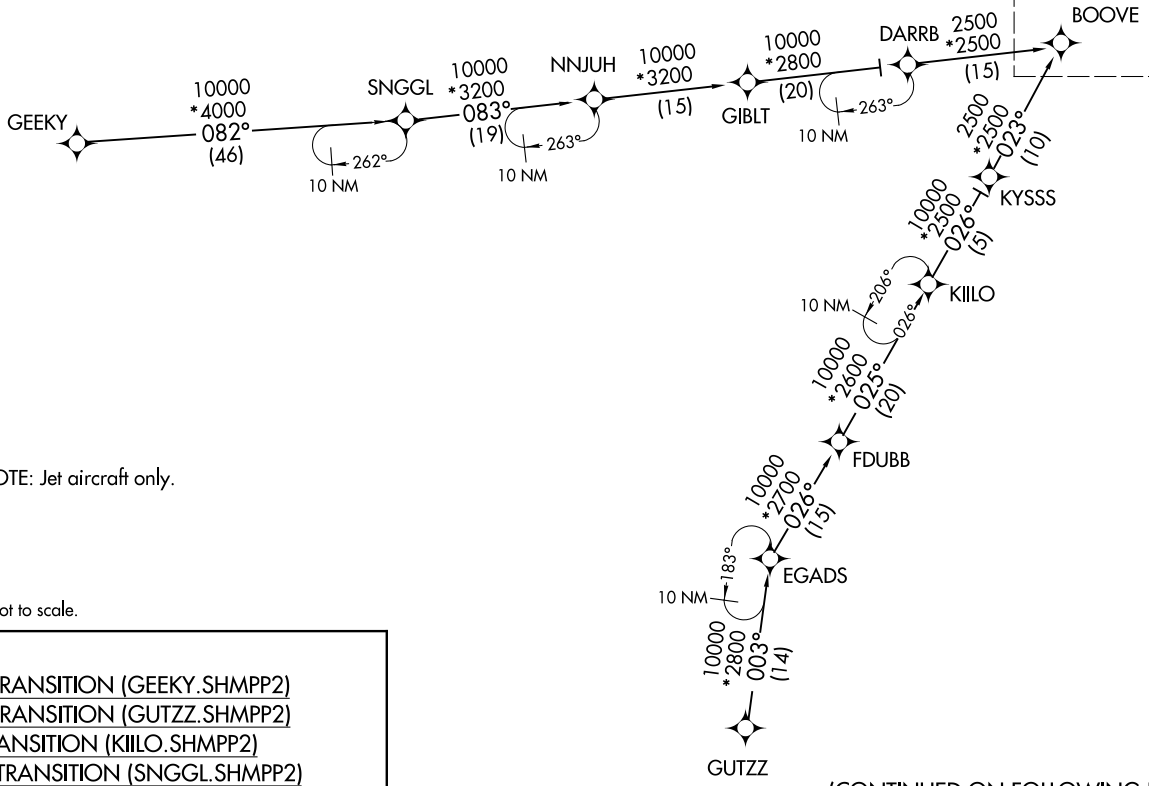
REGIONAL APP CON
119.875 284.65
D-ATIS ARR
123.775



NOTE: Jet aircraft only.

NOTE: Chart not to scale.

- GEEKY TRANSITION (GEEKY.SHMPP2)
- GUTZZ TRANSITION (GUTZZ.SHMPP2)
- KIILO TRANSITION (KIILO.SHMPP2)
- SNGGL TRANSITION (SNGGL.SHMPP2)



(CONTINUED ON FOLLOWING PAGE)
(NARRATIVE ON FOLLOWING PAGE)

(BOOVE.SHMPP2) 23054

AL-6039 (FAA)

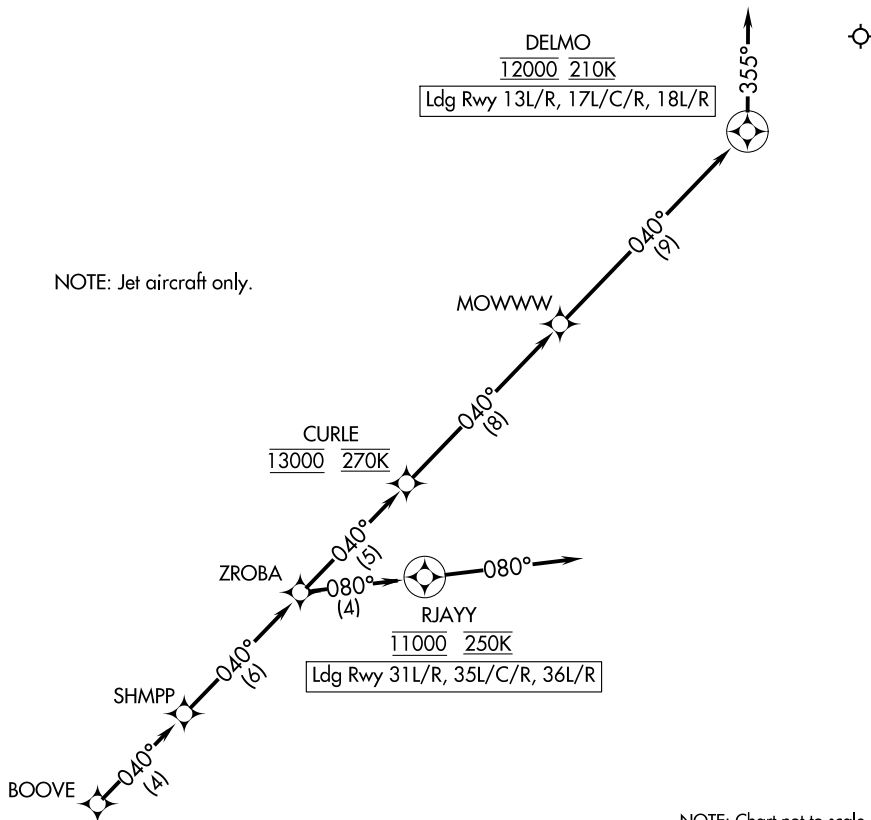
DALLAS-FORT WORTH INTL (DFW)
DALLAS-FORT WORTH, TEXAS

SHMPP TWO ARRIVAL (RNAV) Arrival Route

REGIONAL APP CON
119.875 284.65
D-ATIS ARR
123.775

RNAV 1 - DME/DME/IRU or GPS.
RADAR required.

NOTE: Jet aircraft only.



NOTE: Chart not to scale.

ARRIVAL ROUTE DESCRIPTION

From BOOVE on track 040° to SHMPP, then on track 040° to ZROBA.

LANDING RUNWAYS 13L/R, 17L/C/R, 18L/R: From ZROBA on track 040° to cross CURLE at 13000 and at 270K, then on track 040° to MOWWW, then on track 040° to cross DELMO at 12000 and at 210K, then on track 355°. Expect RADAR vectors to final approach course.

LANDING RUNWAYS 31L/R, 35L/C/R, 36L/R: From ZROBA on track 080° to cross RJAYY at 11000 and at 250K, then on track 080°. Expect RADAR vectors to final approach course.

SHMPP TWO ARRIVAL (RNAV) Arrival Route

(BOOVE.SHMPP2) 23FEB23

DALLAS-FORT WORTH, TEXAS
DALLAS-FORT WORTH INTL (DFW)

SC-2, 22 FEB 2024 to 21 MAR 2024

SC-2, 22 FEB 2024 to 21 MAR 2024