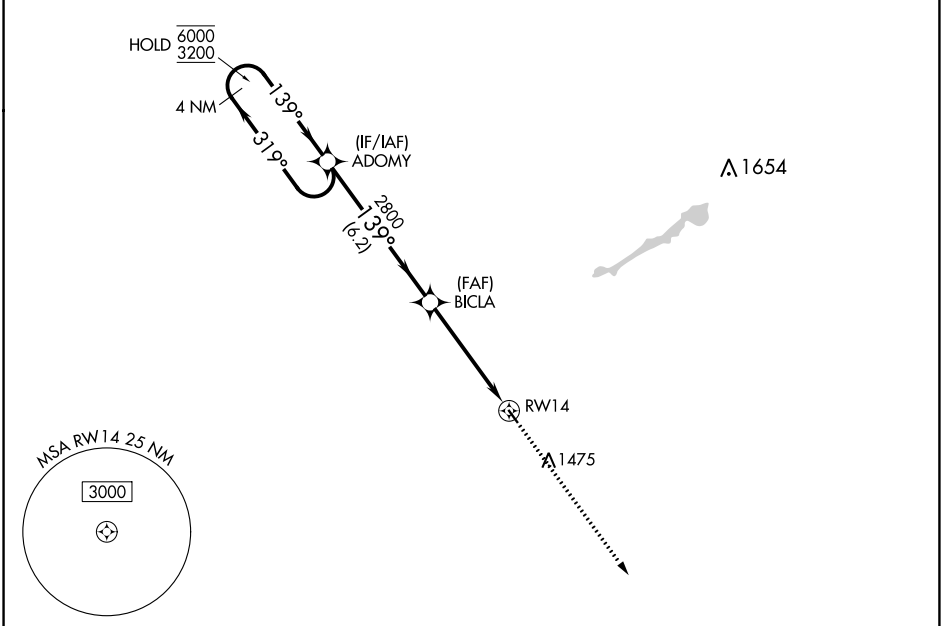


APP CRS 139°	Rwy Idg 3000
	TDZE 1137
	Apt Elev 1137

RNAV (GPS) RWY 14

FERTILE MUNI (D14)

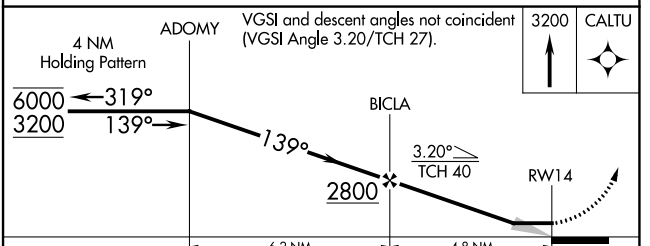
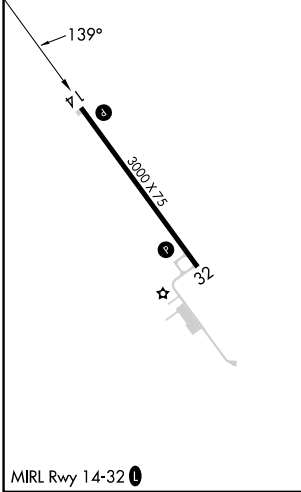
RNP APCH - GPS.		MISSED APPROACH: Climb to 3200 direct CALTU and hold.
▼ ▲NA	Use Mahanomen altimeter setting.	
3N8 AWOS-3PT 121.125	GRAND FORKS APP CON* 118.1 318.1	UNICOM 122.8 (CTAF) 0



NC-1, 22 FEB 2024 to 21 MAR 2024

NC-1, 22 FEB 2024 to 21 MAR 2024

ELEV 1137	TDZE 1137
-----------	-----------



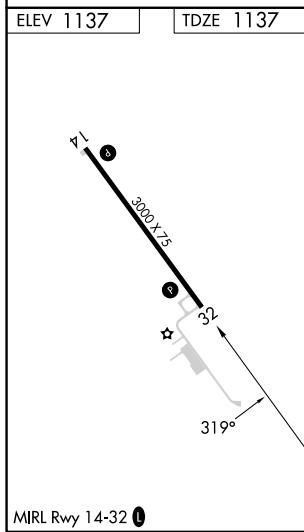
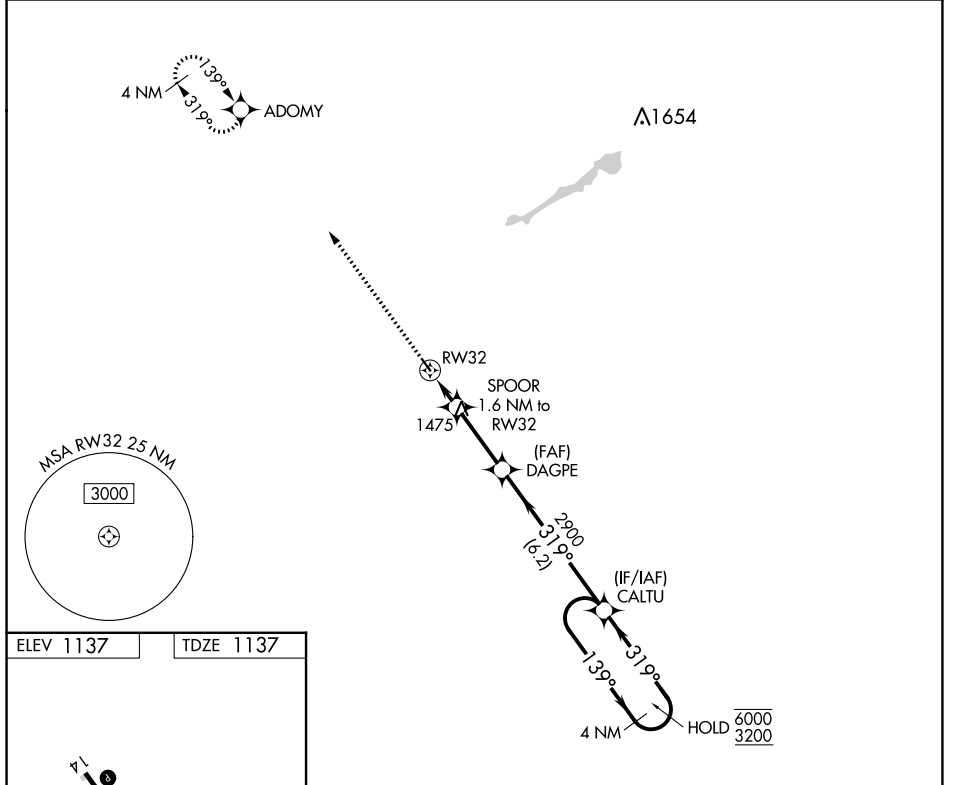
CATEGORY	A	B	C	D
LNAV MDA	1600-1	463 (500-1)	NA	
CIRCLING	1660-1 523 (600-1)	1760-1 623 (700-1)	NA	

APP CRS	Rwy Idg	3000
319°	TDZE	1137
	Apt Elev	1137

RNAV (GPS) RWY 32

FERTILE MUNI (D14)

RNP APCH - GPS.		MISSED APPROACH: Climb to 3200 direct ADOMY and hold.
▼ ▲NA	Use Mahanomen altimeter setting.	
3N8 AWOS-3PT 121.125	GRAND FORKS APP CON ★ 118.1 318.1	UNICOM 122.8 (CTAF) 0



3200	ADOMY	VGSI and descent angles not coincident (VGSI Angle 3.70/TCH 31).		CALTU
↑	✧			4 NM Holding Pattern
		SPOOR 1.6 NM to RW32	DAGPE	6000 3200
		1820	2900	139° →
		1.6 NM	2.8 NM	← 319°
CATEGORY	A	B	C	D
LNAV MDA	1700-1	563 (600-1)	NA	
CIRCLING	1700-1 563 (600-1)	1760-1 623 (700-1)	NA	

NC-1, 22 FEB 2024 to 21 MAR 2024

NC-1, 22 FEB 2024 to 21 MAR 2024